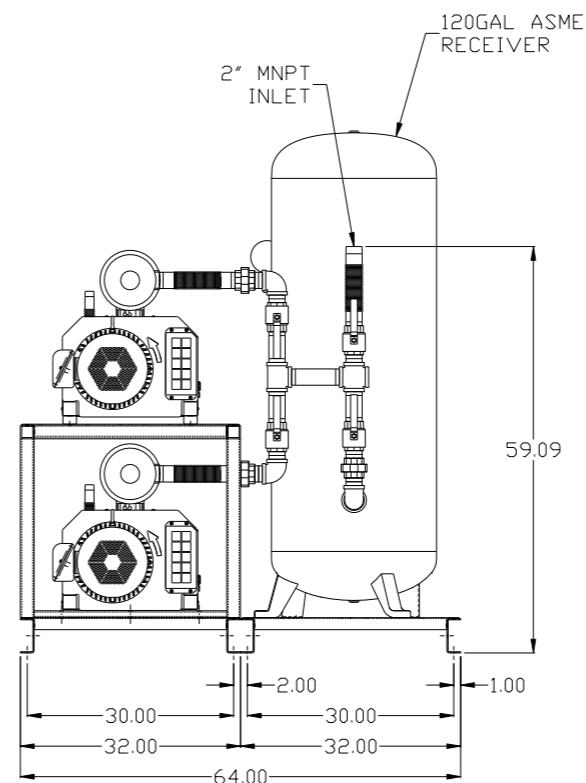
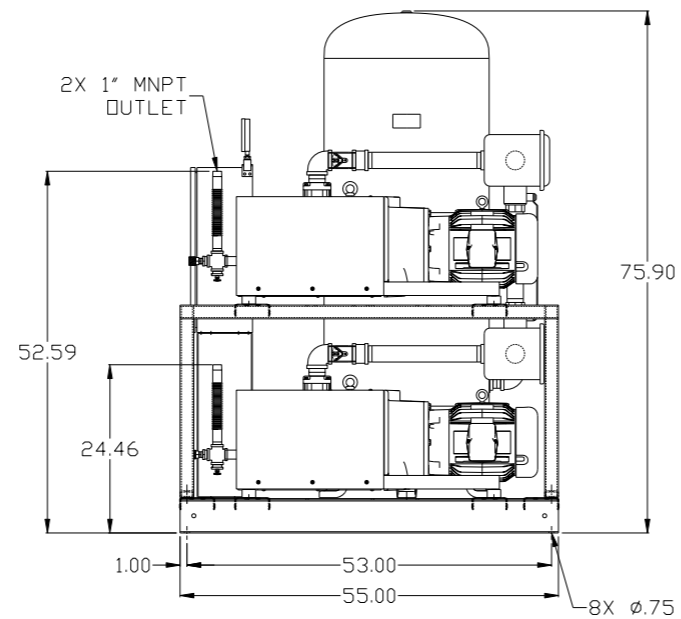
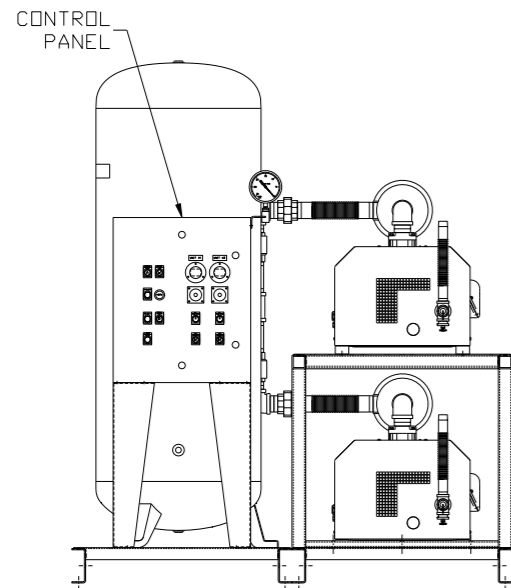
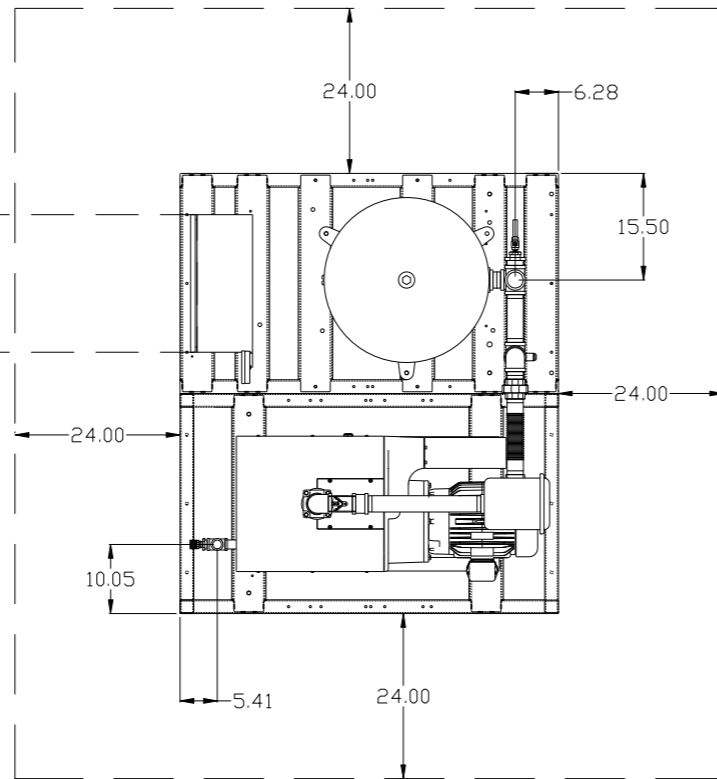


REV	ZONE	REVISION	DATE	ECN	NAME	CHKD
B-1	ALL	RELEASE TO PRODUCTION	2/7/08	21906	AEK	GES
C-1	ALL	ADDED PIPE SIZE TO FLOW, MOVED GAUGE TO PANEL	3/28/08	21881	AEK	GES
C-2	ALL	REMOVED SIGHT GAUGE FROM FLOW, MOVED PUMPS TO OPPOSITE SIDE OF TANK SKID	4/18/08	21881	AEK	GES
D-1	1 ALL	REMOVED VACUUM SWITCHES FROM CONTROL PANEL	11/12/09	22127	AEK	GES
E-1	ALL	ADDED SHEETS 3 & 4	3/7/12	22723	AEK	GES
F-1	2 BS 2 ALL	ADDED SIGHT GAUGE, ADDED SOURCE VALVE INFORMATION	12/27/12	22723	AEK	DMS
G-1	ALL	ADDED PBM/AMI SHEETS	9/4/13	PXEC0030	AEK	GES
H-1	ALL	UPDATED TO PUMP WITH NEMA RATED MOTOR	8/3/16	PXEC0149	AEK	GES

MINIMUM RECOMMENDED ELECTRICAL PANEL CLEARANCE PER OSHA/NEC REQUIREMENTS

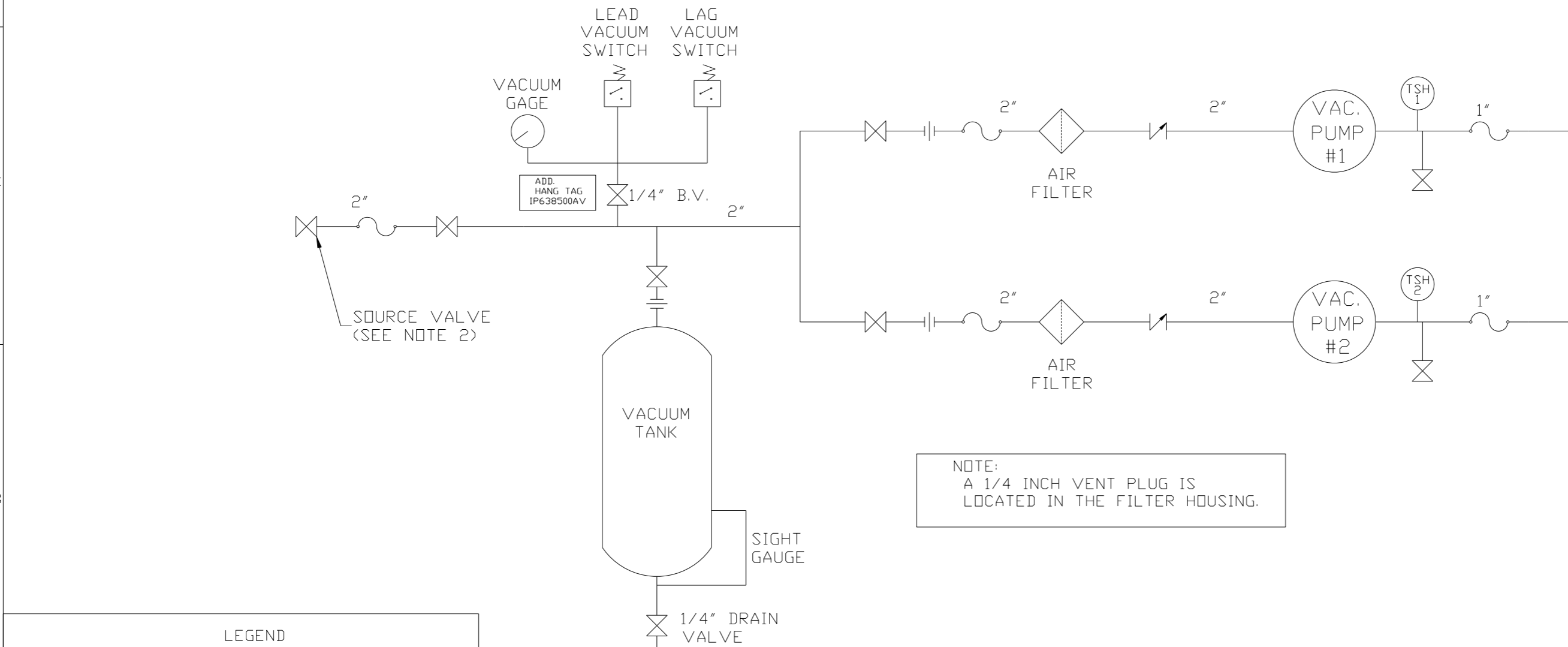
MINIMUM RECOMMENDED MAINTENANCE CLEARANCE



NOTE: SYSTEM DESIGNED IN COMPLIANCE WITH U.S. NFPA '99, LATEST EDITION.

SYMBOL LEGEND ⊖ = MINUS DRAFT ⊕ = PLUS DRAFT TOLERANCES NOT SPECIFIED .XX ± .XXX ± \angle (DEG) ±		= ADDITIONAL CONTROL REQ'D = BRINELL HARDNESS		Drawings to conform to the current revision of the following ANSI standards: Y14.3 Multi and sectional view dsgs. Y14.5M Dimensioning and tolerancing
AUTOCAD REL2008 LT INCH		DO NOT SCALE DRAWING FOR DIMENSIONS Sheet 1 of 4 SCALE 1:14		
CONFIDENTIAL DISCLOSURE This drawing is the property of POWEREX, INC. of the SCOTT FELTZER COMPANY and subject to return on demand. Its contents are confidential and must not be copied or submitted to outside parties for use or examination.				
DRAWN BY AEK		CHECKED BY GES		
APPROVED BY DMS		APPROVED BY TZ		
DATE 2/7/08		DATE 2/7/08		
MATERIAL N/A		POWEREX 150 PRODUCTION DRIVE, HARRISON, OHIO 45030 Ph: 888-769-7979 FAX: (513) 367-3125		
PART NAME 7.5HP CLAW VACUUM 120GAL. DUPLEX		DWG NO CVPD0754B SIZE D		

REV	ZONE	REVISION	DATE	ECN	NAME	CHKD
B-1	ALL	RELEASE TO PRODUCTION	2/7/08	21906	AEK	GES
C-1	ALL	ADDED PIPE SIZE TO FLOW, MOVED GAUGE TO PANEL	3/28/08	21881	AEK	GES
C-2	ALL	REMOVED SIGHT GAUGE FROM FLOW, MOVED PUMPS TO OPPOSITE SIDE OF TANK SKID	4/18/08	21881	AEK	GES
D-1	1 ALL	REMOVED VACUUM SWITCHES FROM CONTROL PANEL	11/12/09	22127	AEK	GES
E-1	ALL	ADDED SHEETS 3 & 4	3/7/12	22723	AEK	GES
F-1	2 BS 2 ALL	ADDED SIGHT GAUGE, ADDED SOURCE VALVE INFORMATION	12/27/12	22723	AEK	DMS
G-1	ALL	ADDED PBM/AMI SHEETS	9/4/13	PXEC0030	AEK	GES
H-1	ALL	UPDATED TO PUMP WITH NEMA RATED MOTOR	8/3/16	PXEC0149	AEK	GES



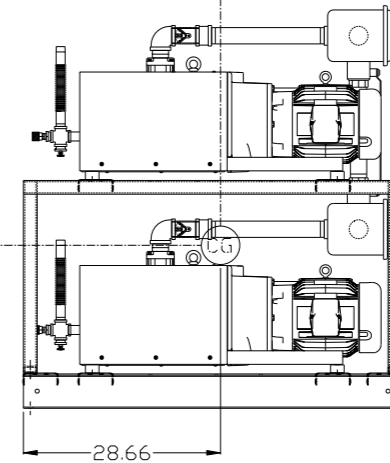
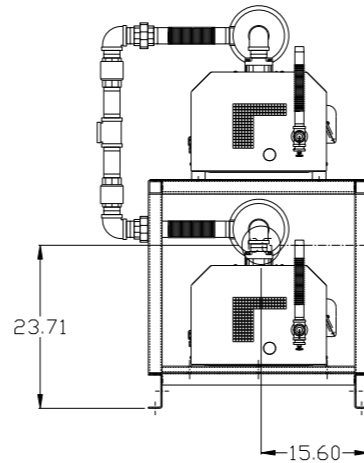
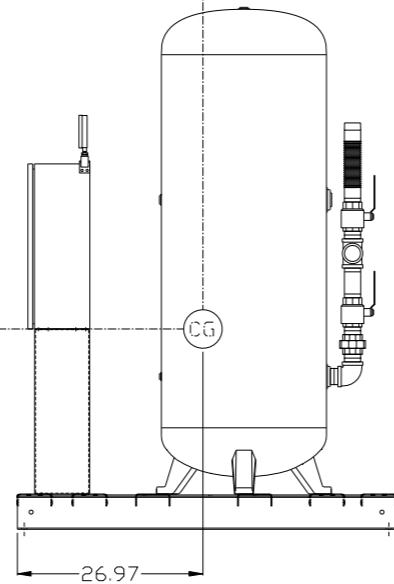
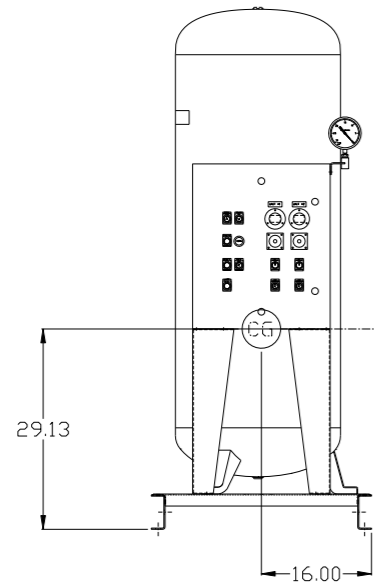
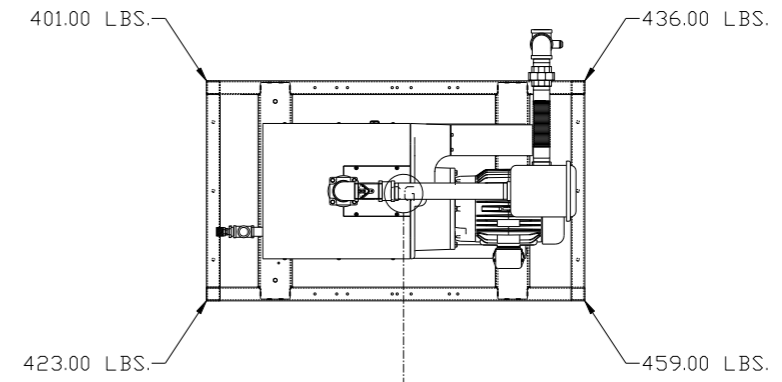
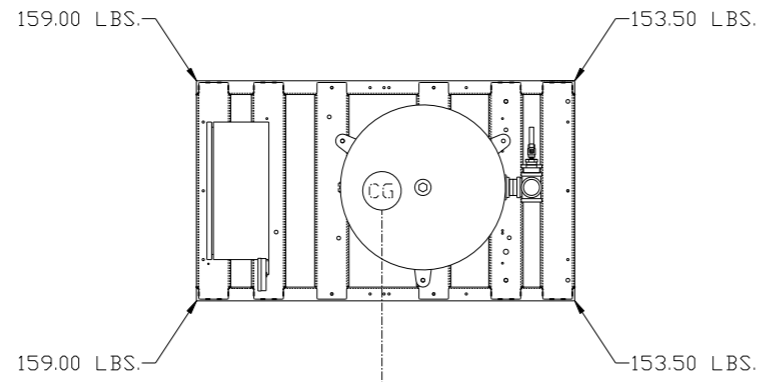
NOTE:
A 1/4 INCH VENT PLUG IS
LOCATED IN THE FILTER HOUSING.

LEGEND	
	TEMP. SWITCH
	LOW OIL LEVEL SW.
	AIR FILTER
	BALL VALVE
	VACUUM SWITCH
	CHECK VALVE
	FLEX LINE
	UNION

NOTES:
1) TSH - TEMPERATURE SWITCH HIGH
2) PER NFPA THE SYSTEM WILL REQUIRE A SOURCE VALVE (SUPPLIED BY OTHERS).

SYMBOL LEGEND		TOLERANCES NOT SPECIFIED		AUTOCAD REL2008 LT		DO NOT SCALE DRAWING FOR DIMENSIONS	
	MINUS DRAFT	.XX ±	.XXX ±	<< DEG > ±	INCH	Sheet 2 of 4	SCALE 1: 14
	PLUS DRAFT	<small>CONFIDENTIAL DISCLOSURE This drawing is the property of POWEREX, INC. or the SCOTT FELTZER COMPANY and subject to return on demand. Its contents are confidential and must not be copied or submitted to outside parties for use or examination.</small>					
	ADDITIONAL CONTROL REQ'D	DRAWN BY		CHECKED BY		APPROVED BY	
	BRINELL HARDNESS	AEK		GES		DMS TZ	
		2/7/08		2/7/08		2/7/08 2/7/08	
MATERIAL		N/A		 <small>150 PRODUCTION DRIVE, HARRISON, OHIO 45030 Ph: 888-769-7979 FAX: (513) 367-3125</small>		<small>DWG NO</small> CVPD0754B	
PART NAME		DUPLX VAC PACKAGE		FLOW SCHEMATIC		<small>SIZE</small> D	

REV	ZONE	REVISION	DATE	ECN	NAME	CHKD
E-1	ALL	ADDED SHEETS 3 & 4	3/7/12	22723	AEK	GES
F-1	2 BS 2 ALL	ADDED SIGHT GAUGE ADDED SOURCE VALVE INFORMATION	12/27/12	22723	AEK	DMS
G-1	ALL	ADDED PIMS/PMI SHEETS	9/4/13	PXEC0030	AEK	GES
H-1	ALL	UPDATED TO PUMP WITH NEMA RATED MOTOR	8/3/16	PXEC0149	AEK	GES



PANEL/RECEIVER SKID:

TOTAL WEIGHT: 625 LBS
 C.O.G. DIMENSIONS
 X (FRONT): -16"
 Y (RIGHT): 26.97"
 Z (HEIGHT): 29.13"

PUMP SKID:

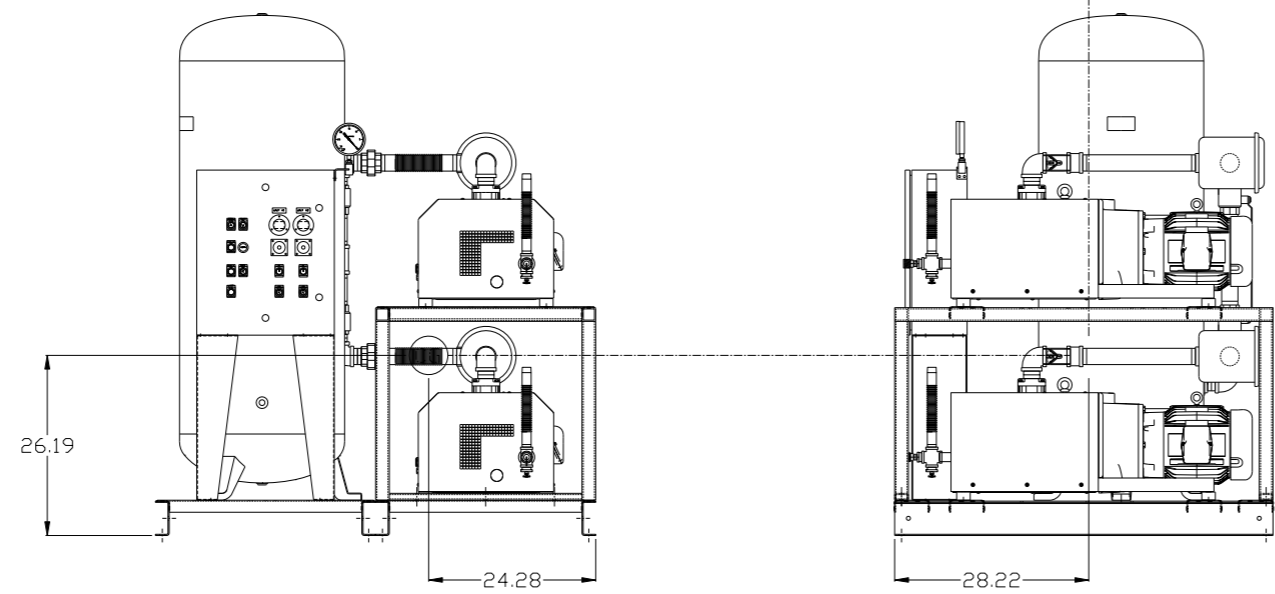
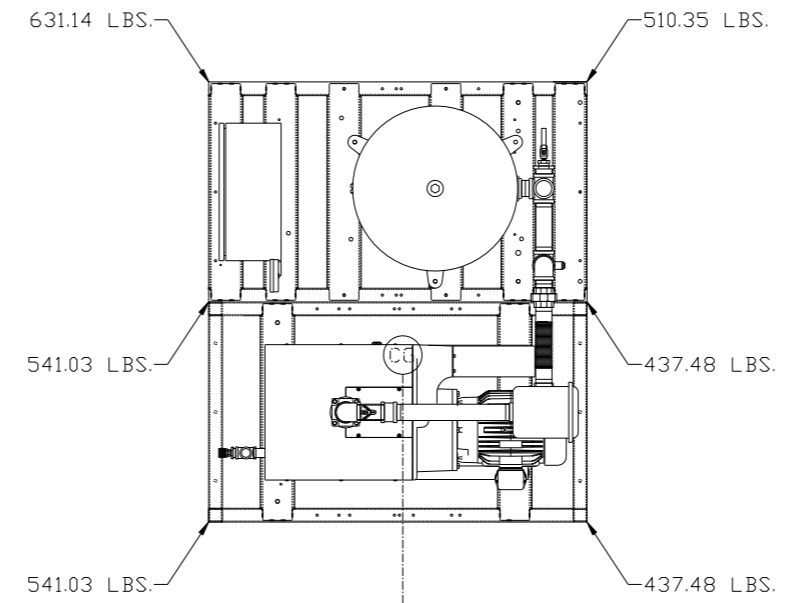
TOTAL WEIGHT: 1719 LBS
 C.O.G. DIMENSIONS
 X (FRONT): -15.60"
 Y (RIGHT): 28.66"
 Z (HEIGHT): 23.71"

denotes center of gravity (CG)

SYMBOL LEGEND		= ADDITIONAL CONTROL REQ'D		Drawings to conform to the current revision of the following ANSI standards:	
⊖	= MINUS DRAFT	⊕	= PLUS DRAFT	⊖	= BRINELL HARDNESS
TOLERANCES NOT SPECIFIED		AUTOCAD REL2008 LT		DO NOT SCALE DRAWING FOR DIMENSIONS	
.XX ±		INCH		Sheet 3 of 4	
.XXX ±				SCALE 1: 14	
<< DEG >> ±					
CONFIDENTIAL DISCLOSURE					
This drawing is the property of POWEREX, INC. of the SCOTT FETZER COMPANY and subject to return on demand. Its contents are confidential and must not be copied or submitted to outside parties for use or examination.					
DRAWN BY		CHECKED BY		APPROVED BY	
AEK		GES		DMS RJR	
3/7/12		3/7/12		3/7/12 3/7/12	
MATERIAL		N/A			
PART NAME		7.5HP CLAW VACUUM		SIZE	
120GAL. DUPLEX		CVPD0754B		D	

8 7 6 5 4 3 2 1

REV	ZONE	REVISION	DATE	ECN	NAME	CHKD
E-1	ALL	ADDED SHEETS 3 & 4	3/7/12	22723	AEK	GES
F-1	2 BS 2 ALL	ADDED SIGHT GAUGE ADDED SOURCE VALVE INFORMATION	12/27/12	22723	AEK	DMS
G-1	ALL	ADDED PBM/AMI SHEETS	9/4/13	PXEC0030	AEK	GES
H-1	ALL	UPDATED TO PUMP WITH NEMA RATED MOTOR	8/3/16	PXEC0149	AEK	GES



COMPLETE SYSTEM:
 TOTAL WEIGHT: 2344 LBS
 C.O.G. DIMENSIONS
 X (FRONT): -24.28"
 Y (RIGHT): 28.22"
 Z (HEIGHT): 26.19"

denotes center of gravity (CG)

SYMBOL LEGEND ⊖ = MINUS DRAFT ⊕ = PLUS DRAFT .XX ± .XXX ± \angle(DEG) ±		= ADDITIONAL CONTROL REQ'D = BRINELL HARDNESS		Drawings to conform to the current revision of the following ANSI standards: Y14.3 Multi and sectional view dgs. Y14.5M Dimensioning and tolerancing	
TOLERANCES NOT SPECIFIED AUTOCAD REL2008 LT INCH		DO NOT SCALE DRAWING FOR DIMENSIONS Sheet 4 of 4 SCALE 1: 14		CONFIDENTIAL DISCLOSURE This drawing is the property of POWEREX, INC. of the SCOTT FETZER COMPANY and subject to return on demand. Its contents are confidential and must not be copied or submitted to outside parties for use or examination.	
MATERIAL N/A		DRAWN BY AEK		CHECKED BY GES	
PART NAME 7.5HP CLAW VACUUM 120GAL. DUPLEX		APPROVED BY DMS 3/7/12		ENGINEERING MFG/MKTG RJR 3/7/12	
DWG NO CVPD0754B		 150 PRODUCTION DRIVE, HARRISON, OHIO 45030 Ph: 888-769-7979 FAX: (513) 367-3125		SIZE D	

8 7 6 5 4 3 2 1

REV	ZONE	REVISION	DATE	ECN	NAME	CHKD
G-1	ALL	ADDED PBMI/HMI SHEETS	9/4/13	PXEC0030	AEK	GES
H-1	ALL	UPDATED TO PUMP WITH NEMA RATED MOTOR	8/3/16	PXEC0149	AEK	GES

MINIMUM RECOMMENDED ELECTRICAL PANEL CLEARANCE PER OSHA/NEC REQUIREMENTS


MINIMUM RECOMMENDED MAINTENANCE CLEARANCE

PBMI CONTROL PANEL

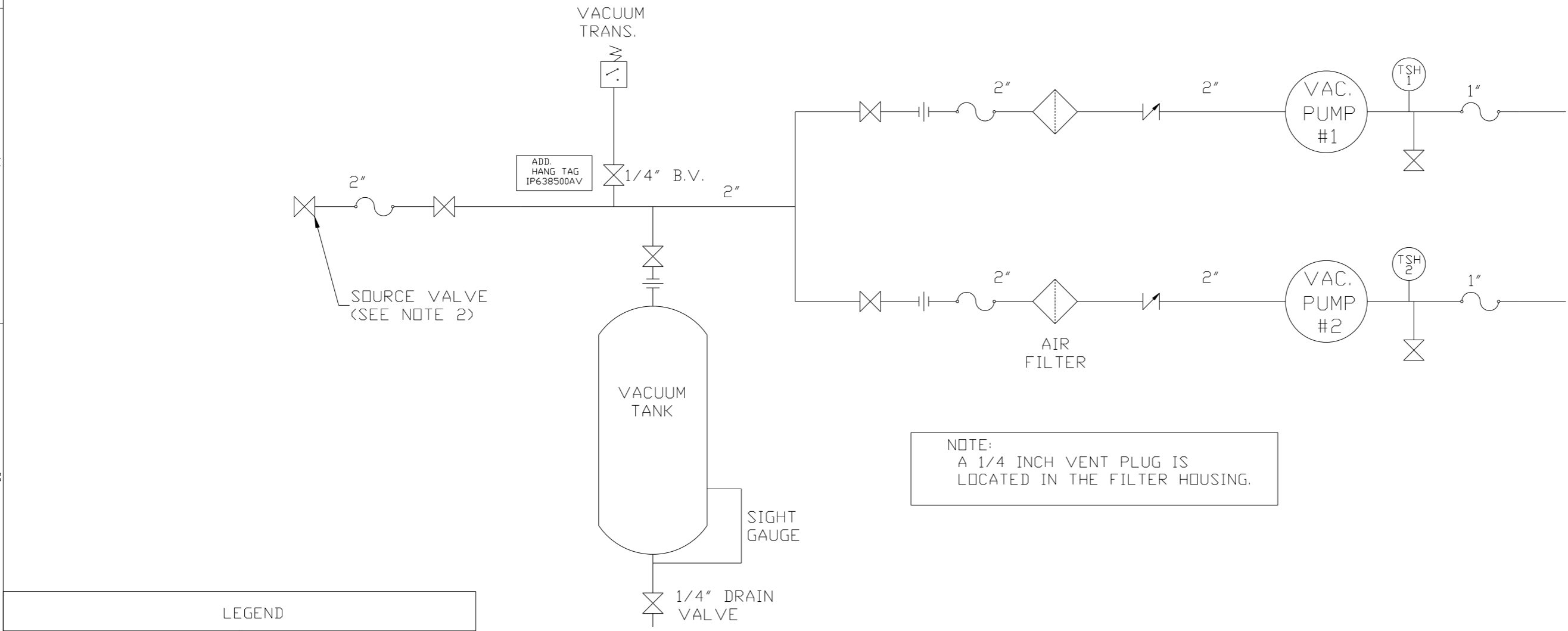
2X 1" MNPT OUTLET

2" MNPT INLET
120GAL ASME RECEIVER

NOTE: SYSTEM DESIGNED IN COMPLIANCE WITH U.S. NFPA '99, LATEST EDITION.

SYMBOL LEGEND ⊖ = MINUS DRAFT ⊕ = PLUS DRAFT TOLERANCES NOT SPECIFIED .XX ± .XXX ± <ANGLE> ±		= ADDITIONAL CONTROL REQ'D = BRINELL HARDNESS		Drawings to conform to the current revision of the following ANSI standards: Y14.3 Multi and sectional view dsgs. Y14.5M Dimensioning and tolerancing	
AUTOCAD REL2008 LT INCH		DO NOT SCALE DRAWING FOR DIMENSIONS Sheet 1 of 4 SCALE 1:14			
CONFIDENTIAL DISCLOSURE This drawing is the property of POWEREX, INC. of the SCOTT FEITZER COMPANY and subject to return on demand. Its contents are confidential and must not be copied or submitted to outside parties for use or examination.					
DRAWN BY AEK		CHECKED BY GES		APPROVED BY ENGINEERING MFG/MKTG DMS DFG	
9/4/13		9/4/13		9/4/13 9/4/13	
MATERIAL N/A				 150 PRODUCTION DRIVE, HARRISON, OHIO 45030 Ph 888-769-7979 FAX (513) 367-3125	
PART NAME 7.5HP CLAW VACUUM 120GAL. DUPLEX				DWG NO CVPD0754B SIZE D	

REV	ZONE	REVISION	DATE	ECN	NAME	CHKD
G-1	ALL	ADDED PBM/HMI SHEETS	9/4/13	PXEC0030	AEK	GES
H-1	ALL	UPDATED TO PUMP WITH NEMA RATED MOTOR	8/3/16	PXEC0149	AEK	GES



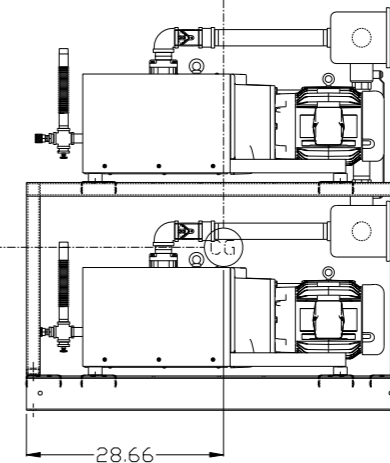
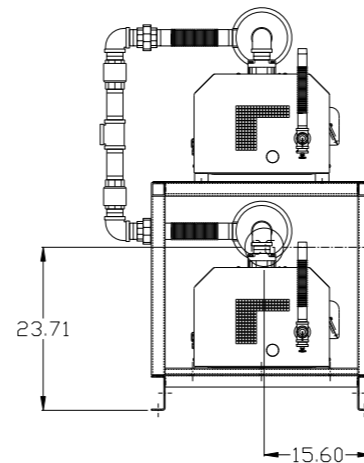
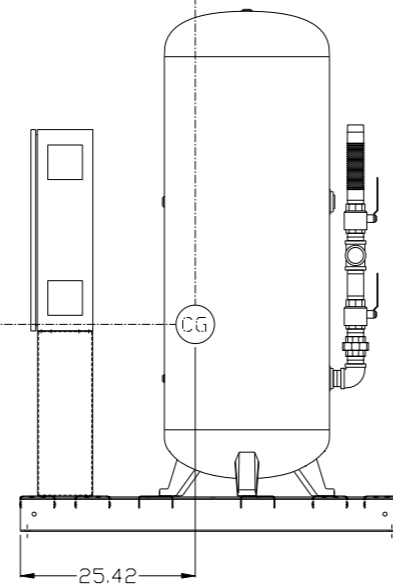
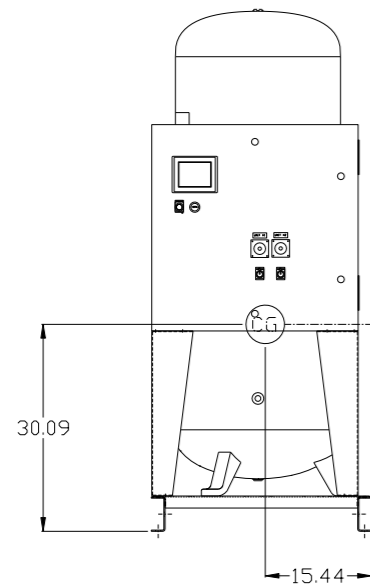
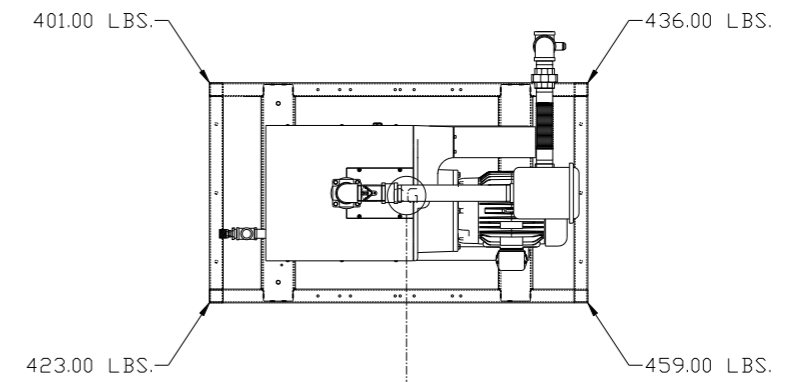
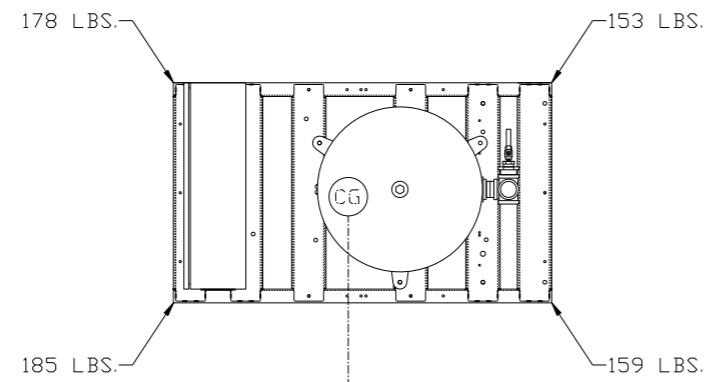
NOTE:
A 1/4 INCH VENT PLUG IS
LOCATED IN THE FILTER HOUSING.

LEGEND			
	TEMP. SWITCH		VACUUM SWITCH
	LOW OIL LEVEL SW.		CHECK VALVE
	AIR FILTER		FLEX LINE
	BALL VALVE		UNION

NOTES:
1) TSH - TEMPERATURE SWITCH HIGH
2) PER NFPA THE SYSTEM WILL REQUIRE A SOURCE VALVE (SUPPLIED BY OTHERS).

SYMBOL LEGEND = MINUS DRAFT = PLUS DRAFT = ADDITIONAL CONTROL REQ'D = BRINELL HARDNESS		Drawings to conform to the current revision of the following ANSI standards: Y14.3 Multi and sectional view dgs. Y14.5M Dimensioning and tolerancing												
TOLERANCES NOT SPECIFIED .XX ± .XXX ± \angle(DEG) ±	AUTOCAD REL2008 LT INCH	DO NOT SCALE DRAWING FOR DIMENSIONS Sheet 2 of 4 SCALE 1: 14												
CONFIDENTIAL DISCLOSURE This drawing is the property of POWEREX, INC. of the SCOTT FETZER COMPANY and subject to return on demand. Its contents are confidential and must not be copied or submitted to outside parties for use or examination.														
MATERIAL N/A	PART NAME DUPLEX VAC PACKAGE FLOW SCHEMATIC	<table border="1"> <tr> <th>DRAWN BY</th> <th>CHECKED BY</th> <th>ENGINEERING</th> <th>MFG/MRKTG</th> </tr> <tr> <td>AEK</td> <td>GES</td> <td>DMS</td> <td>DFG</td> </tr> <tr> <td>9/4/13</td> <td>9/4/13</td> <td>9/4/13</td> <td>9/4/13</td> </tr> </table> 150 PRODUCTION DRIVE, HARRISON, OHIO 45030 Ph: 888-769-7979 FAX: (513) 367-3125	DRAWN BY	CHECKED BY	ENGINEERING	MFG/MRKTG	AEK	GES	DMS	DFG	9/4/13	9/4/13	9/4/13	9/4/13
DRAWN BY	CHECKED BY	ENGINEERING	MFG/MRKTG											
AEK	GES	DMS	DFG											
9/4/13	9/4/13	9/4/13	9/4/13											
DWG NO CVPD0754B		SIZE D												

REV	ZONE	REVISION	DATE	ECN	NAME	CHKD
G-1	ALL	ADDED PBM/HMI SHEETS	9/4/13	PXEC0030	AEK	GES
H-1	ALL	UPDATED TO PUMP WITH NEMA RATED MOTOR	8/3/16	PXEC0149	AEK	GES



PANEL/RECEIVER SKID:

TOTAL WEIGHT: 675 LBS
 C.O.G. DIMENSIONS
 X (FRONT): -15.44"
 Y (RIGHT): 25.42"
 Z (HEIGHT): 30.09"

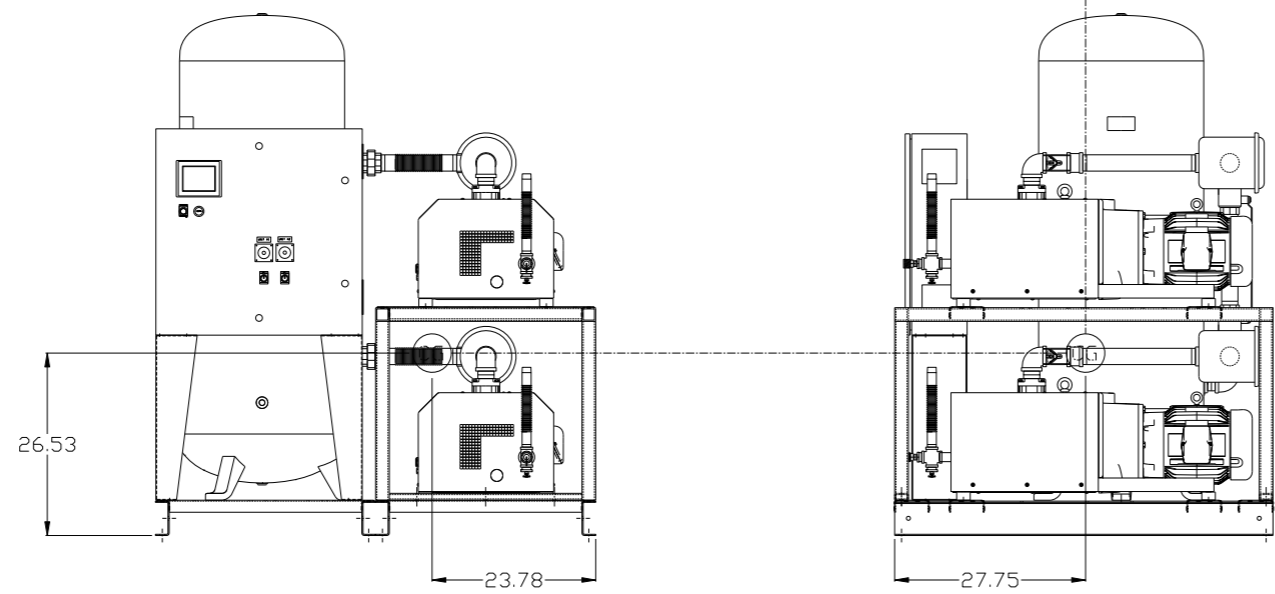
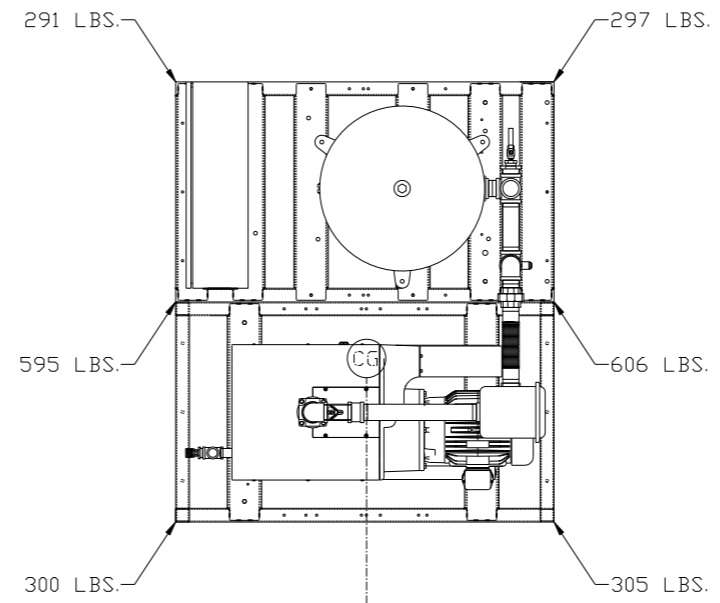
PUMP SKID:

TOTAL WEIGHT: 1719 LBS
 C.O.G. DIMENSIONS
 X (FRONT): -15.60"
 Y (RIGHT): 28.66"
 Z (HEIGHT): 23.71"

denotes center of gravity (CG)

SYMBOL LEGEND ⊖ = MINUS DRAFT ⊕ = PLUS DRAFT TOLERANCES NOT SPECIFIED .XX ± .XXX ± << DEG > ±		= ADDITIONAL CONTROL REQ'D = BRINELL HARDNESS		Drawings to conform to the current revision of the following ANSI standards: Y14.3 Multi and sectional view dgs. Y14.5M Dimensioning and tolerancing	
AUTOCAD REL2008 LT INCH		DO NOT SCALE DRAWING FOR DIMENSIONS Sheet 3 of 4 SCALE 1:14		CONFIDENTIAL DISCLOSURE This drawing is the property of POWEREX, INC. of the SCOTT FETZER COMPANY and subject to return on demand. Its contents are confidential and must not be copied or submitted to outside parties for use or examination.	
MATERIAL N/A		DRAWN BY AEK		CHECKED BY GES	
PART NAME 7.5HP CLAW VACUUM 120GAL. DUPLEX		APPROVED BY ENGINEERING DMS		APPROVED BY MFG/MKTG DFG	
DWG NO CVPD0754B		DATE 9/4/13		DATE 9/4/13	
SIZE D		DATE 9/4/13		DATE 9/4/13	

REV	ZONE	REVISION	DATE	ECN	NAME	CHKD
G-1	ALL	ADDED PBM/HMI SHEETS	9/4/13	PXEC0030	AEK	GES
H-1	ALL	UPDATED TO PUMP WITH NEMA RATED MOTOR	8/3/16	PXEC0149	AEK	GES



COMPLETE SYSTEM:
 TOTAL WEIGHT: 2394 LBS
 C.O.G. DIMENSIONS
 X (FRONT): -23.78"
 Y (RIGHT): 27.75"
 Z (HEIGHT): 26.53"

denotes center of gravity (CG)

SYMBOL LEGEND ⊖ = MINUS DRAFT ⊕ = PLUS DRAFT Ⓢ = ADDITIONAL CONTROL REQ'D ⓈH = BRINELL HARDNESS		Drawings to conform to the current revision of the following ANSI standards: Y14.3 Multi and sectional view dgs. Y14.5M Dimensioning and tolerancing	
TOLERANCES NOT SPECIFIED .XX ± .XXX ± <DEG> ±		AUTOCAD REL2008 LT INCH DO NOT SCALE DRAWING FOR DIMENSIONS Sheet 4 of 4 SCALE 1: 14	
CONFIDENTIAL DISCLOSURE This drawing is the property of POWEREX, INC. of the SCOTT FETZER COMPANY and subject to return on demand. Its contents are confidential and must not be copied or submitted to outside parties for use or examination.			
DRAWN BY AEK		CHECKED BY GES	
APPROVED BY DMS		ENGINEERING DFG	
DATE 9/4/13		DATE 9/4/13	
MATERIAL N/A		PART NAME 7.5HP CLAW VACUUM 120GAL. DUPLEX	
DWG NO CVPD0754B		SIZE D	