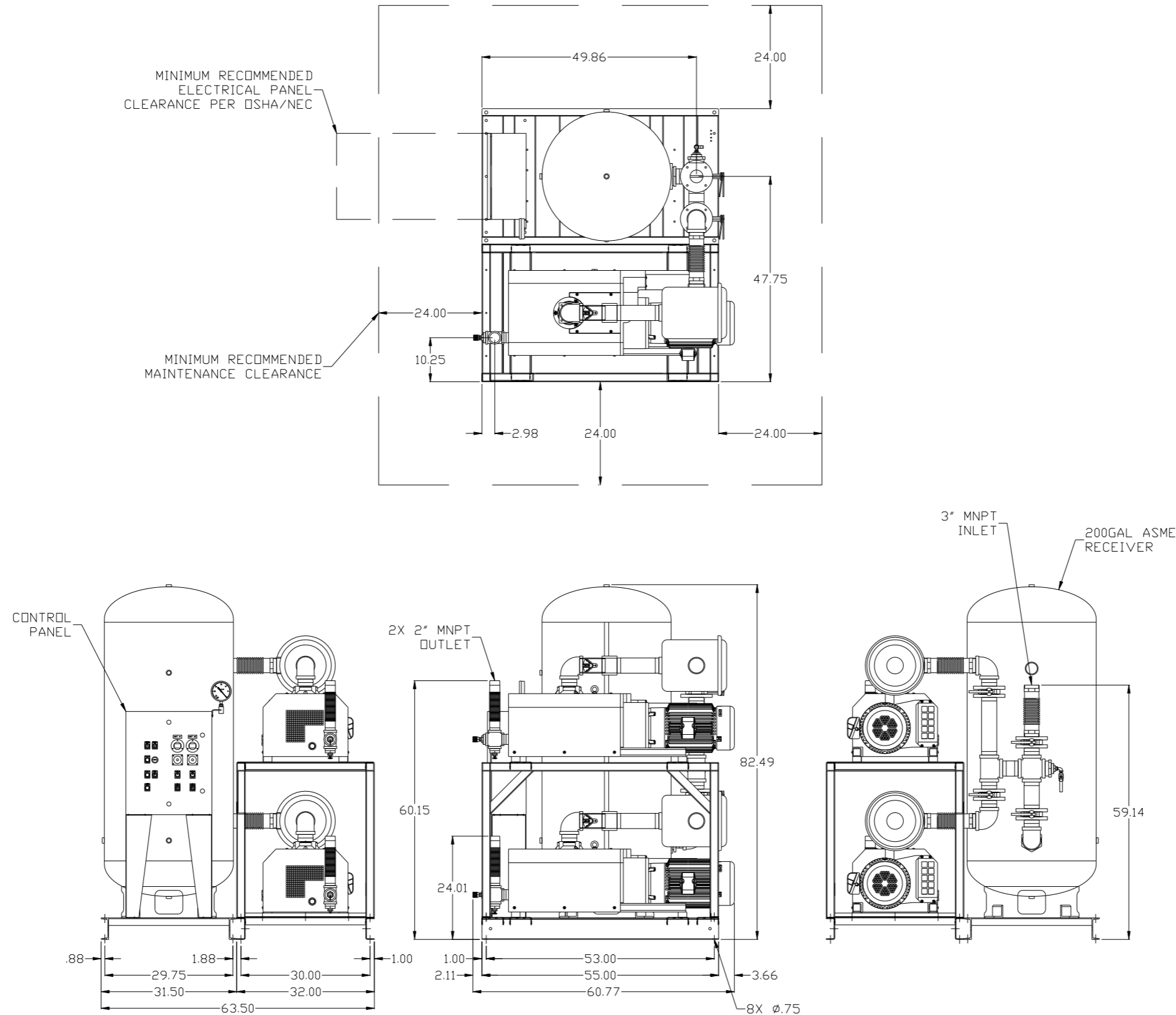


REV	ZONE	REVISION	DATE	ECN	NAME	CHKD
B-1	ALL	RELEASE TO PRODUCTION	2/27/08	21881	AEK	GES
B-2	ALL	CORRECTED PLUMBING SIZES; ADDED PIPE SIZES TO FLOW	3/27/08	21881	AEK	GES
B-3	ALL	REMOVED SIGHT GAUGE FROM FLOW; MOVED PUMPS TO OPPOSITE SIDE OF TANK SKID	4/21/08	21881	AEK	GES
C-1	1 ALL	ADDED SHEETS 3 & 4	11/12/09	22127	AEK	GES
D-1	ALL	ADDED SHEETS FOR 200V 3Ø	9/23/10	22348	AEK	GES
E-1	ALL	UPDATED TO CVB10003AVV/-04AV; REMOVED ADDITIONAL VOLTAGE SHEETS	10/2/12	PXEC0013	AEK	DMS
F-1	ALL	MADE HIGH TEMP STANDARD	7/26/13	PXEC0030	AEK	GES
G-1	ALL	ADDED PPM/HMI SHEETS	1/9/14	PXEC0067	AEK	GES
G-2	ALL	UPDATED PUMP MOTOR	8/1/14	PXEC0067	AEK	GES

MINIMUM RECOMMENDED ELECTRICAL PANEL CLEARANCE PER OSHA/NEC

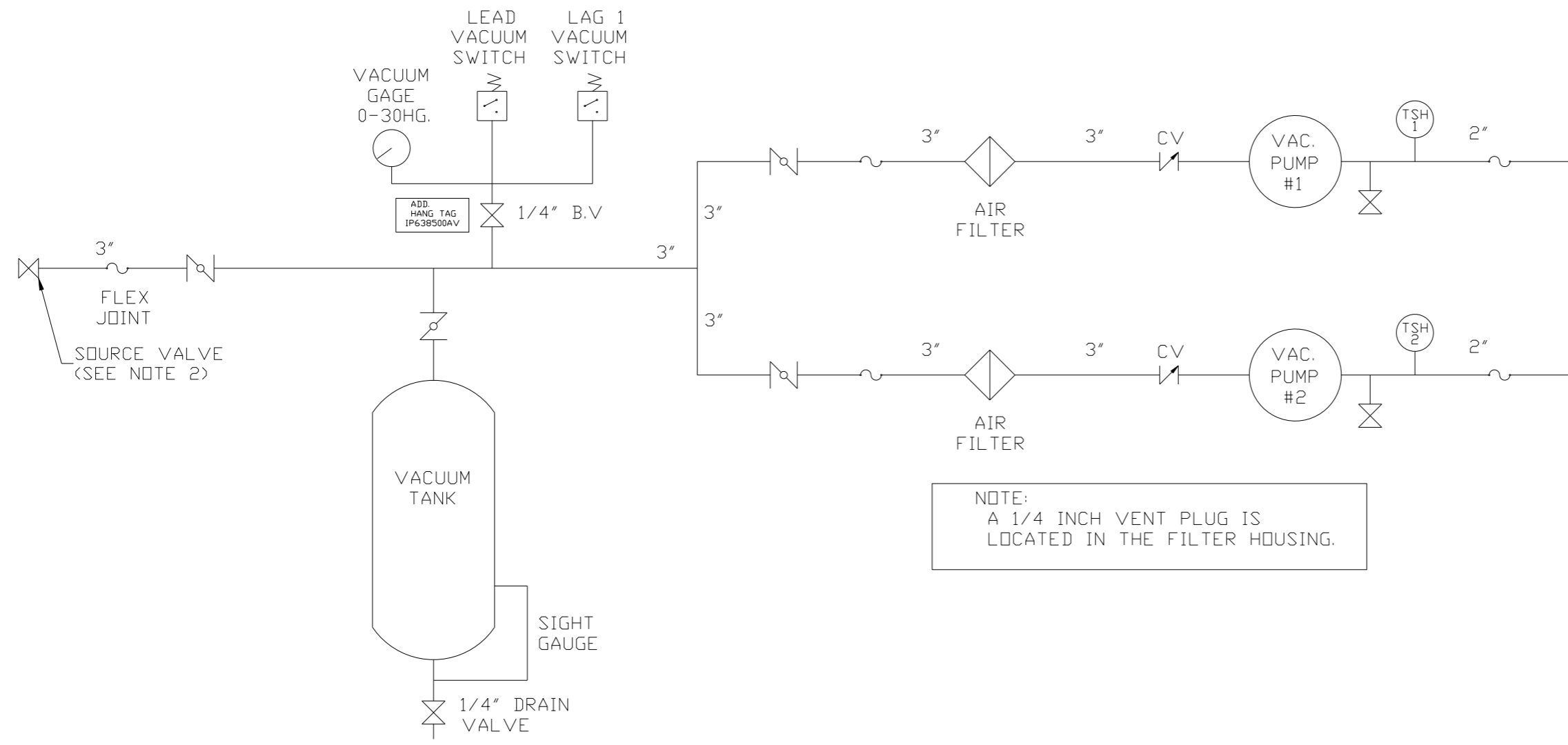
MINIMUM RECOMMENDED MAINTENANCE CLEARANCE



NOTE: SYSTEM DESIGNED IN COMPLIANCE WITH U.S. NFPA '99, LATEST EDITION.

SYMBOL LEGEND		= ADDITIONAL CONTROL REQ'D		Drawings to conform to the current revision of the following ANSI standards:	
⊖	MINUS DRAFT	⊕	PLUS DRAFT	⊖	BRINELL HARDNESS
TOLERANCES NOT SPECIFIED		AUTOCAD REL2008 LT		DO NOT SCALE DRAWING FOR DIMENSIONS	
.XX	±	INCH		Sheet 1 of 4	SCALE 1:14
.XXX	±	CONFIDENTIAL DISCLOSURE: This drawing is the property of POWEREX, INC. of the SCOTT FEITZER COMPANY and subject to return on demand. Its contents are confidential and must not be copied or submitted to outside parties for use or examination.			
<<DEG>>	±	DRAWN BY		CHECKED BY	APPROVED BY
		AEK		GES	DMS RJR
		2/27/08		2/27/08	2/27/08 2/27/08
MATERIAL		N/A		 150 PRODUCTION DRIVE, HARRISON, OHIO 45030 Ph: 888-769-7979 FAX: (513) 367-3125	
PART NAME		10HP CLAW VACUUM		SIZE D	
		200GAL. DUPLEX		DWG NO CVPD1005	

REV	ZONE	REVISION	DATE	ECN	NAME	CHKD
B-1	ALL	RELEASE TO PRODUCTION	2/27/08	21881	AEK	GES
B-2	ALL	CORRECTED PLUMBING SIZES; ADDED PIPE SIZES TO FLOW	3/27/08	21881	AEK	GES
B-3	ALL	REMOVED SIGHT GAUGE FROM FLOW; MOVED PUMPS TO OPPOSITE SIDE OF TANK SKID	4/21/08	21881	AEK	GES
C-1	1 ALL	ADDED SHEETS 3 & 4	11/12/09	22127	AEK	GES
D-1	ALL	ADDED SHEETS FOR 200V 3Ø	9/23/10	22348	AEK	GES
E-1	ALL	UPDATED TO CVB10003AV/-04AV; REMOVED ADDITIONAL VOLTAGE SHEETS	10/2/12	PXEC0013	AEK	DMS
F-1	ALL	MADE HIGH TEMP STANDARD	7/26/13	PXEC0030	AEK	GES
G-1	ALL	ADDED PBM/HMI SHEETS	1/9/14	PXEC0067	AEK	GES
G-2	ALL	UPDATED PUMP MOTOR	8/1/14	PXEC0067	AEK	GES



NOTE:  
A 1/4 INCH VENT PLUG IS  
LOCATED IN THE FILTER HOUSING.

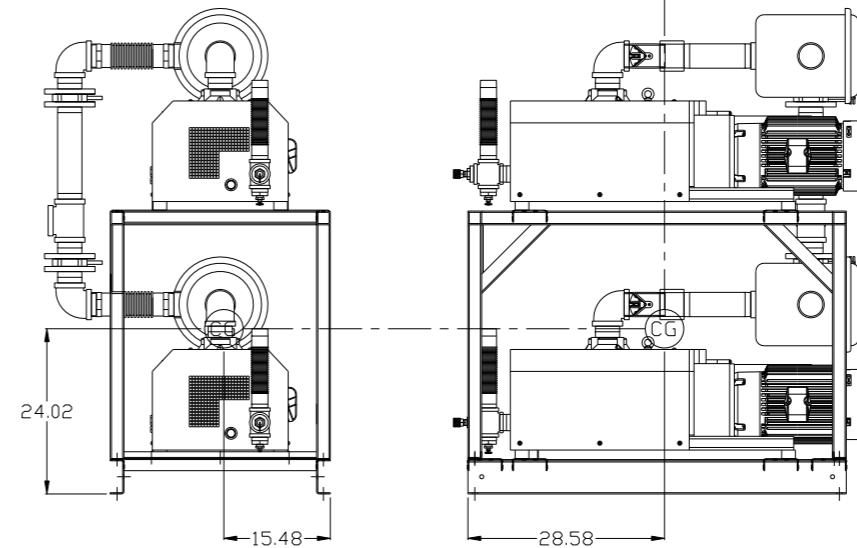
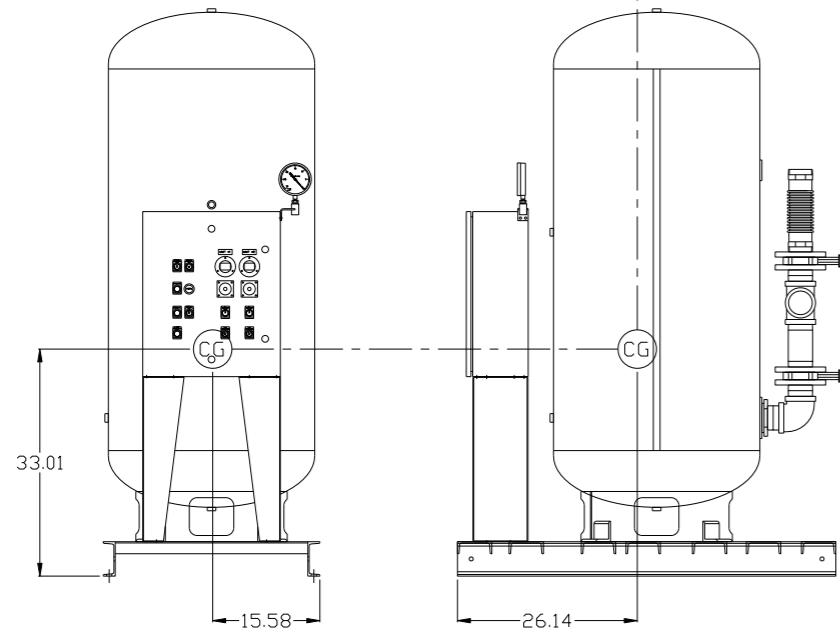
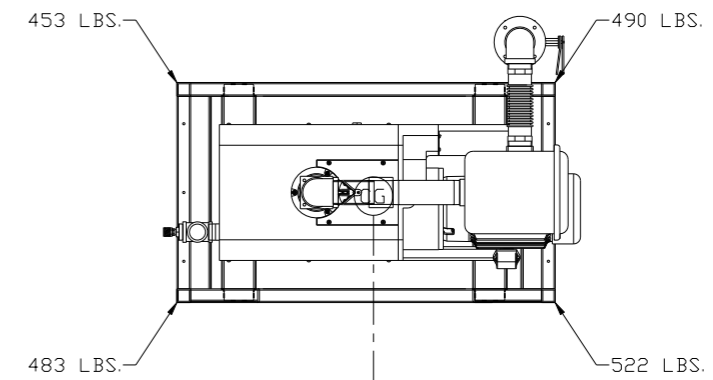
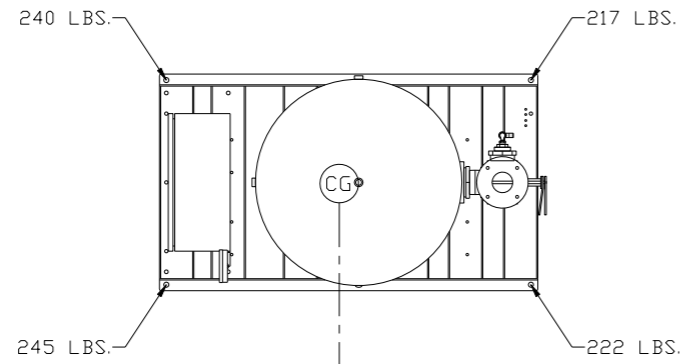
LEGEND	
	TEMP. SWITCH
	VACUUM SWITCH
	AIR FILTER
	BALL VALVE
	BUTTERFLY VALVE
	CHECK VALVE
	FLEX LINE
	UNION

NOTES:  
1) TSH - TEMPERATURE SWITCH HIGH  
2) PER NFPA THE SYSTEM WILL REQUIRE A SOURCE VALVE (SUPPLIED BY OTHERS).

SYMBOL LEGEND ⊖ = MINUS DRAFT ⊕ = PLUS DRAFT TOLERANCES NOT SPECIFIED .XX ± .XXX ± <math>\angle</math> (DEG.) ±		= ADDITIONAL CONTROL REQ'D = BRINELL HARDNESS	Drawings to conform to the current revision of the following ANSI standards: Y14.3 Multi and sectional view dgs. Y14.5M Dimensioning and tolerancing
AUTOCAD REL2008 LT INCH		DO NOT SCALE DRAWING FOR DIMENSIONS Sheet 2 of 4 SCALE 1: 14	
CONFIDENTIAL DISCLOSURE This drawing is the property of POWEREX, INC. of the SCOTT FETZER COMPANY and subject to return on demand. Its contents are confidential and must not be copied or submitted to outside parties for use or examination.		DRAWN BY AEK	CHECKED BY GES
MATERIAL N/A		APPROVED BY DMS	MFG/MKTG RJR
PART NAME VAC PACKAGE DUPLEX FLOW SCHEMATIC		DATE 2/27/08	DATE 2/27/08
DWG NO CVPD1005		SIZE D	



REV	ZONE	REVISION	DATE	ECN	NAME	CHKD
C-1	ALL	ADDED SHEETS 3 & 4	11/12/09	22127	AEK	GES
D-1	ALL	ADDED SHEETS FOR 200V 3Ø	9/23/10	22348	AEK	GES
Z	ALL	UPDATED TO CVB10003AV/-04AV REMOVED ADDITIONAL VOLTAGE SHEETS	10/2/12	PXEC0013	AEK	DMS
F-1	ALL	MADE HIGH TEMP STANDARD	7/26/13	PXEC0030	AEK	GES
G-1	ALL	ADDED PBM/HMI SHEETS	1/9/14	PXEC0067	AEK	GES
G-2	ALL	UPDATED PUMP MOTOR	8/1/14	PXEC0067	AEK	GES



denotes center of gravity (CG)

PANEL/TANK SKID:

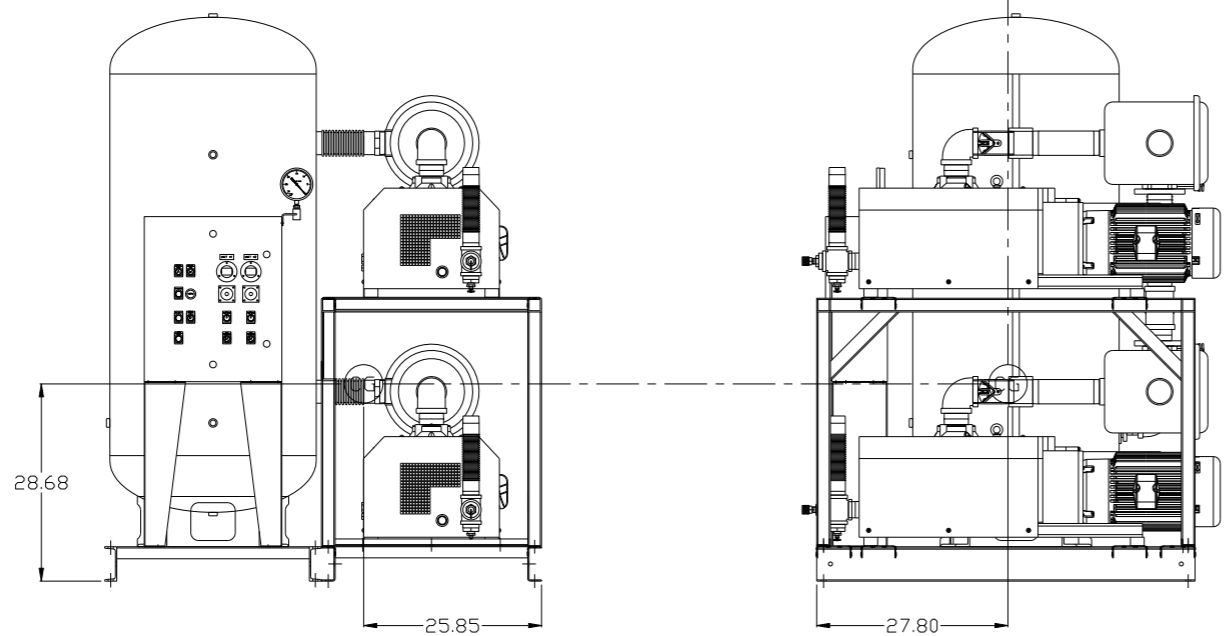
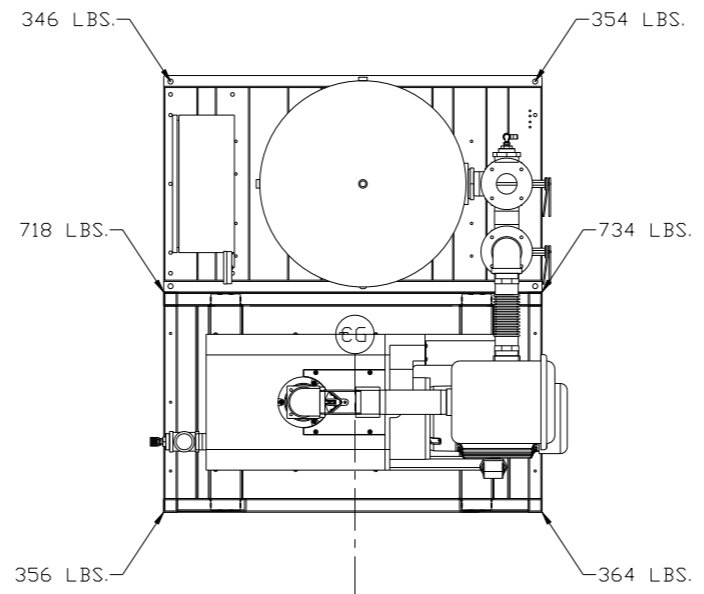
TOTAL WEIGHT: 924 LBS  
 C.O.G. DIMENSIONS  
 X (FRONT): -15.58"  
 Y (RIGHT): 26.14"  
 Z (HEIGHT): 33.01"

PUMP SKID:

TOTAL WEIGHT: 1948 LBS  
 C.O.G. DIMENSIONS  
 X (FRONT): -15.48"  
 Y (RIGHT): 28.58"  
 Z (HEIGHT): 24.02"

SYMBOL LEGEND		ADDITIONAL CONTROL REQ'D		Drawings to conform to the current revision of the following ANSI standards:	
⊖	MINUS DRAFT	⊕	PLUS DRAFT	⊖	Y14.3 Multi and sectional view deqs.
⊕	MINUS DRAFT	⊖	PLUS DRAFT	⊖	Y14.5M Dimensioning and tolerancing
⊕	MINUS DRAFT	⊖	PLUS DRAFT	⊖	Y14.5M Dimensioning and tolerancing
TOLERANCES NOT SPECIFIED		AUTOCAD REL2008 LT		DO NOT SCALE DRAWING FOR DIMENSIONS	
.XX ±		INCH		Sheet 3 of 4	
.XXX ±				SCALE 1: 14	
<< DEG >> ±					
CONFIDENTIAL DISCLOSURE					
This drawing is the property of POWEREX, INC. of the SCOTT FETZER COMPANY and subject to return on demand. Its contents are confidential and must not be copied or submitted to outside parties for use or examination.					
DRAWN BY		CHECKED BY		APPROVED BY	
AEK		GES		DMS JJ	
11/12/09		11/12/09		11/12/09	
MATERIAL		N/A		POWEREX	
PART NAME		10HP DUPLEX CLAW VAC		150 PRODUCTION DRIVE, HARRISON, OHIO 45030 Ph: 888-769-7979 FAX: (513) 367-3125	
CENTER OF GRAVITY		CVPD1005		SIZE D	

REV	ZONE	REVISION	DATE	ECN	NAME	CHKD
C-1	ALL	ADDED SHEETS 3 & 4	11/12/09	22127	AEK	GES
D-1	ALL	ADDED SHEETS FOR 200V 3Ø	9/23/10	22348	AEK	GES
E-1	ALL	UPDATED TO CVB10003AV/-04AV REMOVED ADDITIONAL VOLTAGE SHEETS	10/2/12	PXEC0013	AEK	DMS
F-1	ALL	MADE HIGH TEMP STANDARD	7/26/13	PXEC0030	AEK	GES
G-1	ALL	ADDED PBM/HMI SHEETS	1/9/14	PXEC0067	AEK	GES
G-2	ALL	UPDATED PUMP MOTOR	8/1/14	PXEC0067	AEK	GES



denotes center of gravity (CG)

VACUUM SYSTEM:

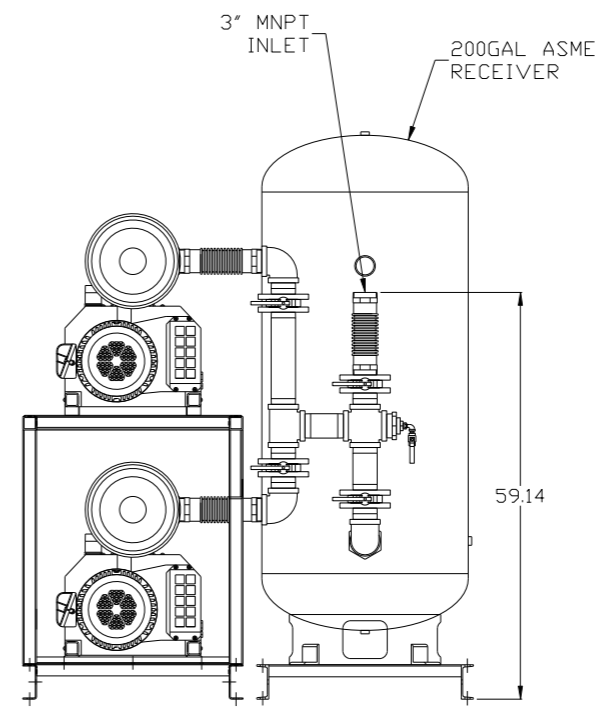
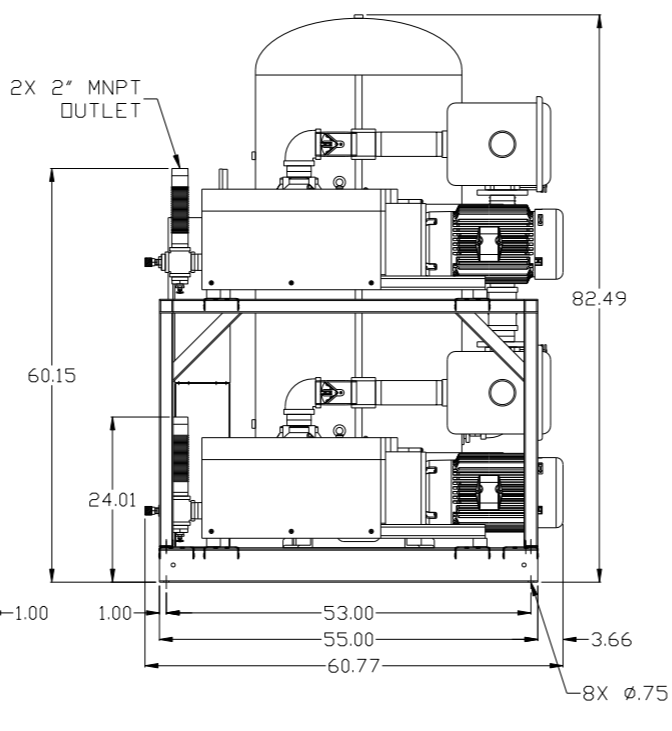
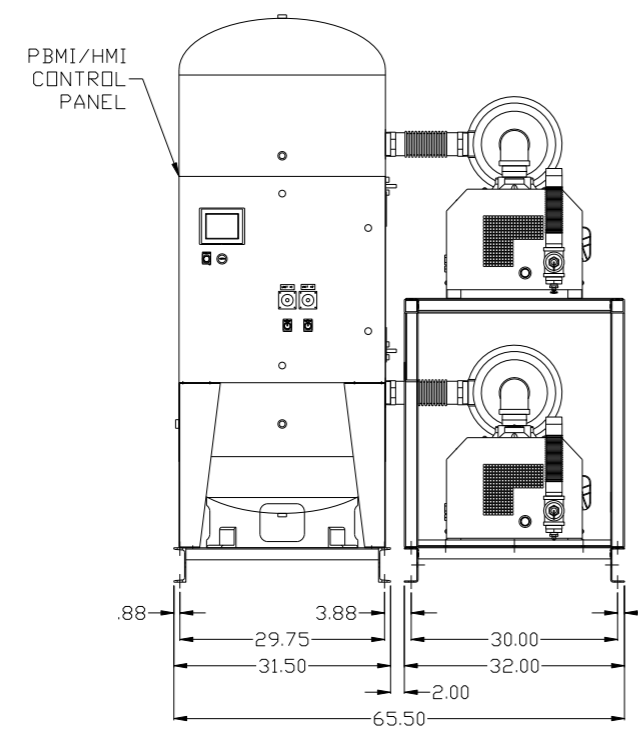
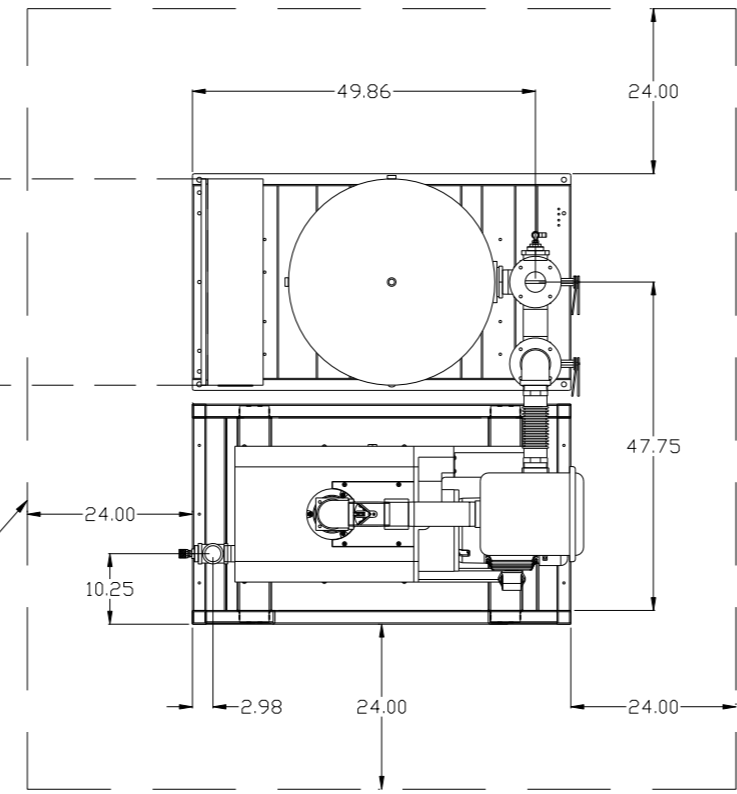
TOTAL WEIGHT: 2872 LBS  
 C.O.G. DIMENSIONS  
 X (FRONT): -25.85"  
 Y (RIGHT): 27.80"  
 Z (HEIGHT): 28.68"

<b>SYMBOL LEGEND</b> ⊖ = MINUS DRAFT    ⊕ = PLUS DRAFT ⊕ = ADDITIONAL CONTROL REQ'D HRC = BRINELL HARDNESS		Drawings to conform to the current revision of the following ANSI standards: Y14.3 Multi and sectional view dgs. Y14.5M Dimensioning and tolerancing	
TOLERANCES NOT SPECIFIED .XX ± .XXX ± <DEG> ±		AUTOCAD REL2008 LT <b>INCH</b> DO NOT SCALE DRAWING FOR DIMENSIONS Sheet 4 of 4    SCALE 1:14	
<b>CONFIDENTIAL DISCLOSURE</b> This drawing is the property of POWEREX, INC. of the SCOTT FEITZER COMPANY and subject to return on demand. Its contents are confidential and must not be copied or submitted to outside parties for use or examination.		DRAWN BY: AEK CHECKED BY: GES APPROVED BY: ENGINEERING MFG/MKTG: DMS JJ 11/12/09 11/12/09 11/12/09 11/12/09	
MATERIAL: N/A		<b>POWEREX</b> 150 PRODUCTION DRIVE, HARRISON, OHIO 45030 Ph: 888-769-7979 FAX: (513) 367-3125	
PART NAME: 10HP DUPLEX CLAW VAC CENTER OF GRAVITY		DWG NO: CVPD1005    SIZE: D	

REV	ZONE	REVISION	DATE	ECN	NAME	CHKD
G-1	ALL	ADDED PBMI/HMI SHEETS	1/9/14	PXEC0067	AEK	GES
G-2	ALL	UPDATED PUMP MOTOR	8/1/14	PXEC0067	AEK	GES

MINIMUM RECOMMENDED ELECTRICAL PANEL CLEARANCE PER OSHA/NEC

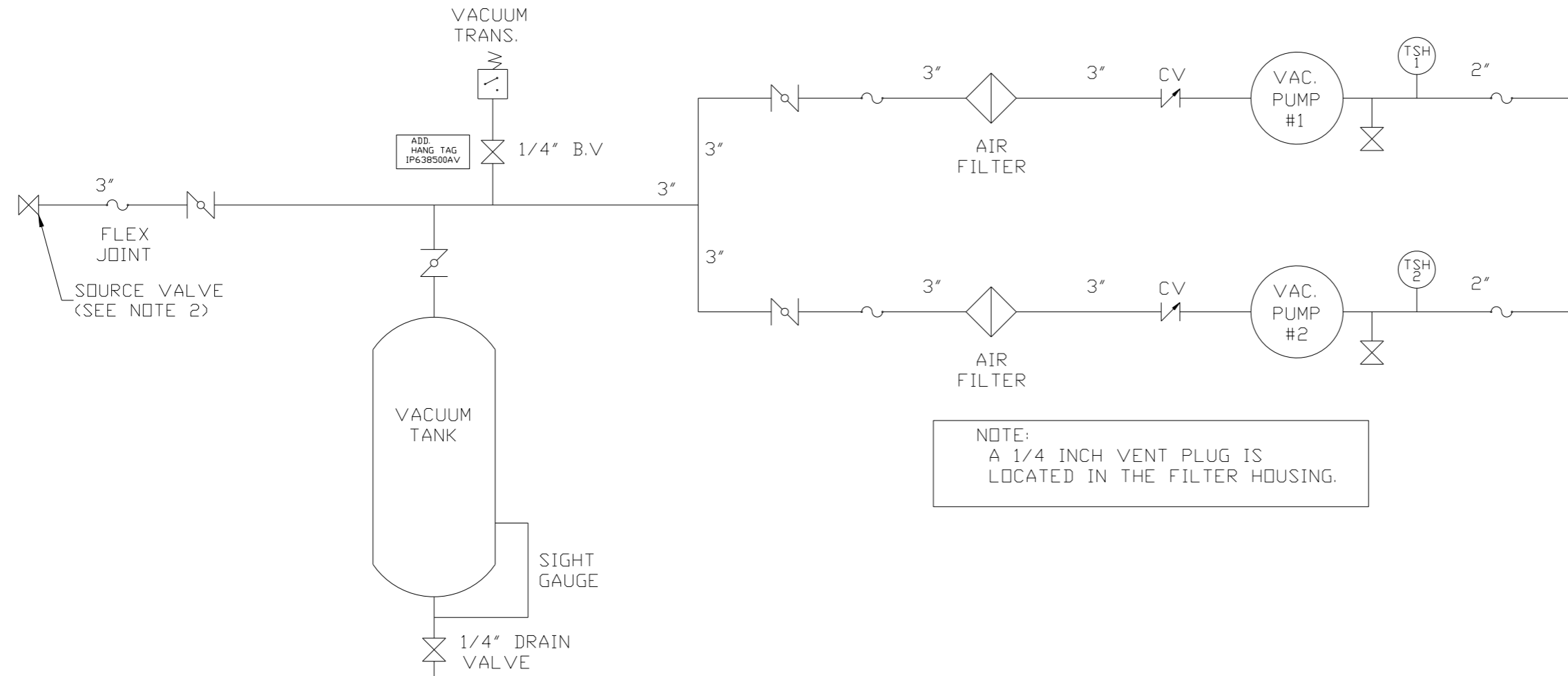
MINIMUM RECOMMENDED MAINTENANCE CLEARANCE



NOTE: SYSTEM DESIGNED IN COMPLIANCE WITH U.S. NFPA '99, LATEST EDITION.

SYMBOL LEGEND		AUTOCAD REL2014 LT		DO NOT SCALE DRAWING FOR DIMENSIONS	
⊖	MINUS DRAFT	⊕	PLUS DRAFT	SCALE 1:14	
⊕	ADDITIONAL CONTROL REQ'D	⊕	BRINELL HARDNESS	Sheet 1 of 3	
TOLERANCES NOT SPECIFIED		INCH		DRAWN BY: AEK	
.XX ±				CHECKED BY: GES	
.XXX ±				ENGINEERING: DMS	
∠(DEG) ±				APPROVED BY: DFG	
CONFIDENTIAL DISCLOSURE		MATERIAL: N/A		1/9/14	
This drawing is the property of POWEREX, INC. of the SCOTT FETZER COMPANY and subject to return on demand. Its contents are confidential and must not be copied or submitted to outside parties for use or examination.		PART NAME: 10HP CLAW VACUUM 200GAL. DUPLEX		1/9/14	
		DWG NO: CVPD1005		SIZE: D	

REV	ZONE	REVISION	DATE	ECN	NAME	CHKD
G-1	ALL	ADDED PBM/HMI SHEETS	1/9/14	PXEC0067	AEK	GES
G-2	ALL	UPDATED PUMP MOTOR	8/1/14	PXEC0067	AEK	GES



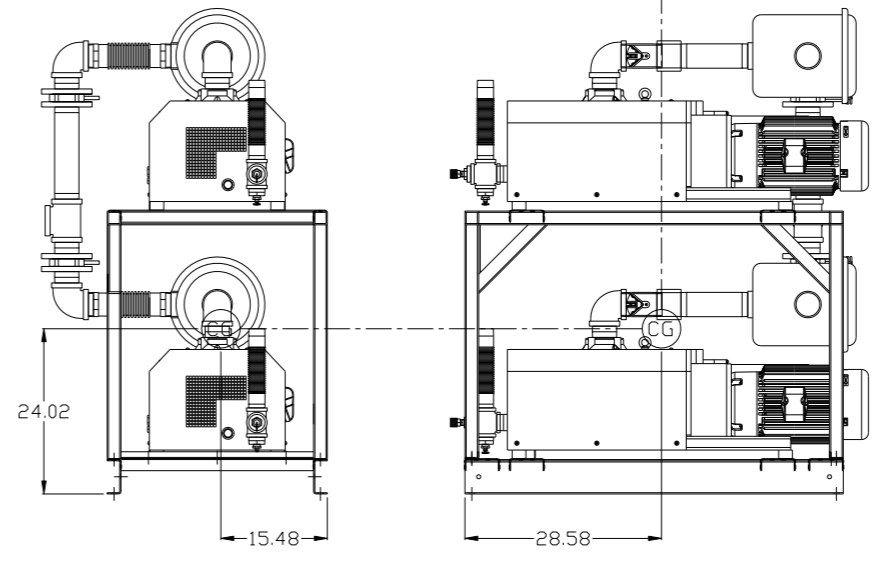
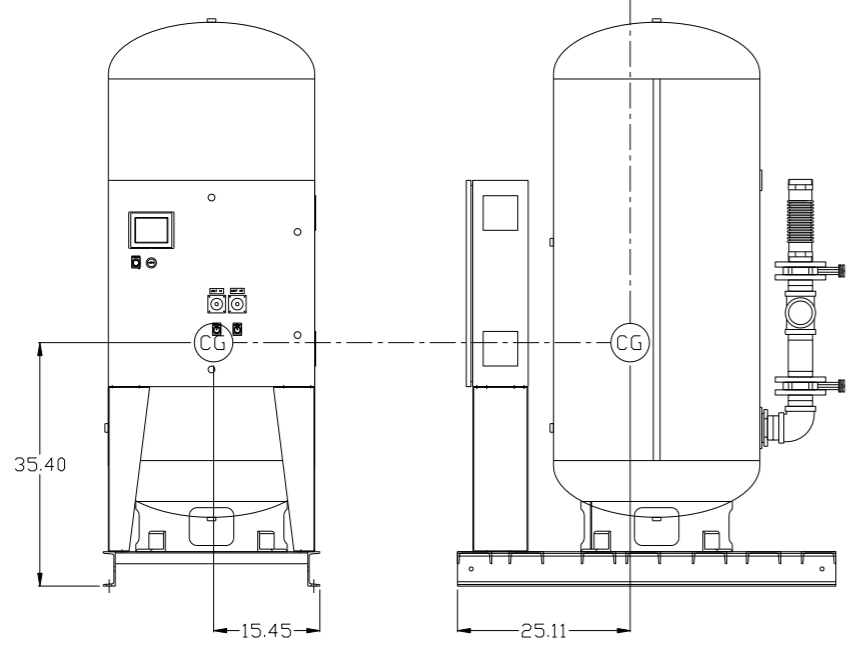
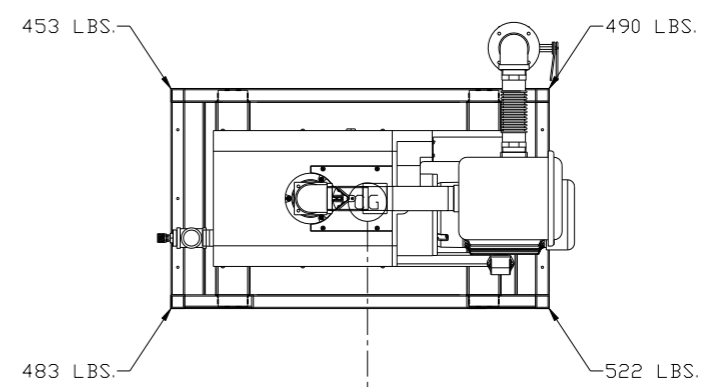
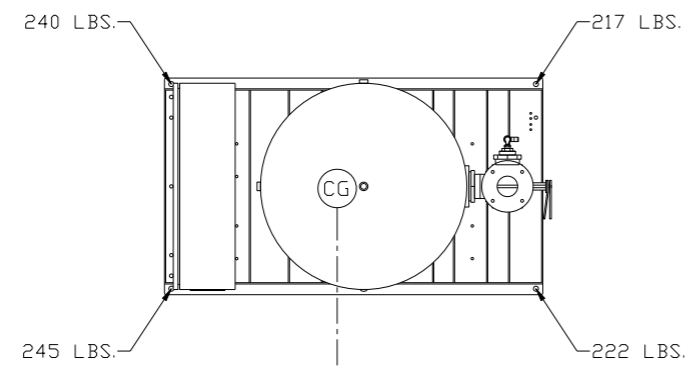
NOTE:  
A 1/4 INCH VENT PLUG IS  
LOCATED IN THE FILTER HOUSING.

LEGEND	
	TEMP. SWITCH
	AIR FILTER
	BALL VALVE
	BUTTERFLY VALVE
	VACUUM SWITCH
	CHECK VALVE
	FLEX LINE
	UNION

NOTES:  
1) TSH - TEMPERATURE SWITCH HIGH  
2) PER NFPA THE SYSTEM WILL REQUIRE A SOURCE VALVE (SUPPLIED BY OTHERS).

<b>SYMBOL LEGEND</b> = MINUS DRAFT = PLUS DRAFT = ADDITIONAL CONTROL REQ'D = BRINELL HARDNESS		Drawings to conform to the current revision of the following ANSI standards: Y14.3 Multi and sectional view dsgs. Y14.5M Dimensioning and tolerancing	
TOLERANCES NOT SPECIFIED .XX ± .XXX ± <math>\angle</math> (DEG.) ±		AUTOCAD REL2014 LT <b>INCH</b>	<b>DO NOT SCALE DRAWING FOR DIMENSIONS</b> Sheet 2 of 3 SCALE 1: 14
<b>CONFIDENTIAL DISCLOSURE</b> This drawing is the property of POWEREX, INC. of the SCOTT FETZER COMPANY and subject to return on demand. Its contents are confidential and must not be copied or submitted to outside parties for use or examination.			
DRAWN BY AEK	CHECKED BY GES	APPROVED BY ENGINEERING DMS	MFG/MKTG DFG
MATERIAL N/A		 150 PRODUCTION DRIVE, HARRISON, OHIO 45030 Ph: 888-769-7979 FAX: (513) 367-3125	
PART NAME VAC PACKAGE DUPLEX FLOW SCHEMATIC		DWG NO CVPD1005	SIZE D

REV	ZONE	REVISION	DATE	ECN	NAME	CHKD
G-1	ALL	ADDED PBM/HMI SHEETS	1/9/14	PXEC0067	AEK	GES
G-2	ALL	UPDATED PUMP MOTOR	8/1/14	PXEC0067	AEK	GES



denotes center of gravity (CG)

PANEL/TANK SKID:

TOTAL WEIGHT: 974 LBS  
 C.O.G. DIMENSIONS  
 X (FRONT): -15.45"  
 Y (RIGHT): 25.11"  
 Z (HEIGHT): 35.40"

PUMP SKID:

TOTAL WEIGHT: 1948 LBS  
 C.O.G. DIMENSIONS  
 X (FRONT): -15.48"  
 Y (RIGHT): 28.58"  
 Z (HEIGHT): 24.02"

<b>SYMBOL LEGEND</b>		= ADDITIONAL CONTROL REQ'D		Drawings to conform to the current revision of the following ANSI standards: Y14.3 Multi and sectional view dgs. Y14.5M Dimensioning and tolerancing
⊖ = MINUS DRAFT	⊕ = PLUS DRAFT	= BRINELL HARDNESS		
TOLERANCES NOT SPECIFIED		AUTOCAD REL2014 LT	DO NOT SCALE DRAWING FOR DIMENSIONS	
.XX ±	.XXX ±	INCH	Sheet 3 of 3	SCALE 1: 14
CONFIDENTIAL DISCLOSURE This drawing is the property of POWEREX, INC. of the SCOTT FETZER COMPANY and subject to return on demand. Its contents are confidential and must not be copied or submitted to outside parties for use or examination.		DRAWN BY	CHECKED BY	APPROVED BY
		AEK	GES	ENGINEERING MFG/MKTG DMS DFG
		1/9/14	1/9/14	1/9/14 1/9/14
MATERIAL		N/A		
PART NAME		10HP DUPLEX CLAW VAC		
CENTER OF GRAVITY		CVPD1005		
DWG NO		SIZE D		