

REV	ZONE	REVISION	DATE	ECN	NAME	CHKD
B-1	ALL	RELEASE TO PRODUCTION	2/7/08	21906	AEK	GES
C-1	2	CORRECTED PUMP AND TSH NUMBERING CORRECTED VAC SWITCH QTY	2/15/08	21881	AEK	GES
C-2	2	REMOVED VENT PLUGS ADDED INLET FILTER NOTE	3/6/08	21881	AEK	GES
C-3	2	REMOVED SIGHT GAUGE FROM FLOW	4/16/08	21881	AEK	GES
D-1	1	REMOVED VACUUM SWITCHES FROM CONTROL PANEL	11/18/09	22127	AEK	GES
E-1	1	CORRECTED INLET FLEX LENGTH ADDED DRIP LEG	10/5/10	22348	AEK	GES
F-1	ALL	ADDED HMI BUILD & FLOW SHEETS	4/6/11	22546	AEK	GES
F-2	ALL	ADDED CDG SHEETS FOR STANDARD BUILD	8/25/11	22546	AEK	GES
G-1	ALL	UPDATED TO CVB10003AV/-04AV	10/2/12	PXEC0013	AEK	DMS
H-1	ALL	MADE HIGH TEMP STANDARD DN BASIC CONTROLS ADDED 2' CLEARANCE TO PXMI BUILD SHEET	7/15/14	PXEC0067	AEK	GES
H-2	ALL	UPDATED PUMP MOTOR	8/1/14	PXEC0067	AEK	GES

MINIMUM RECOMMENDED ELECTRICAL PANEL CLEARANCE PER OSHA

MINIMUM RECOMMENDED MAINTENANCE CLEARANCE

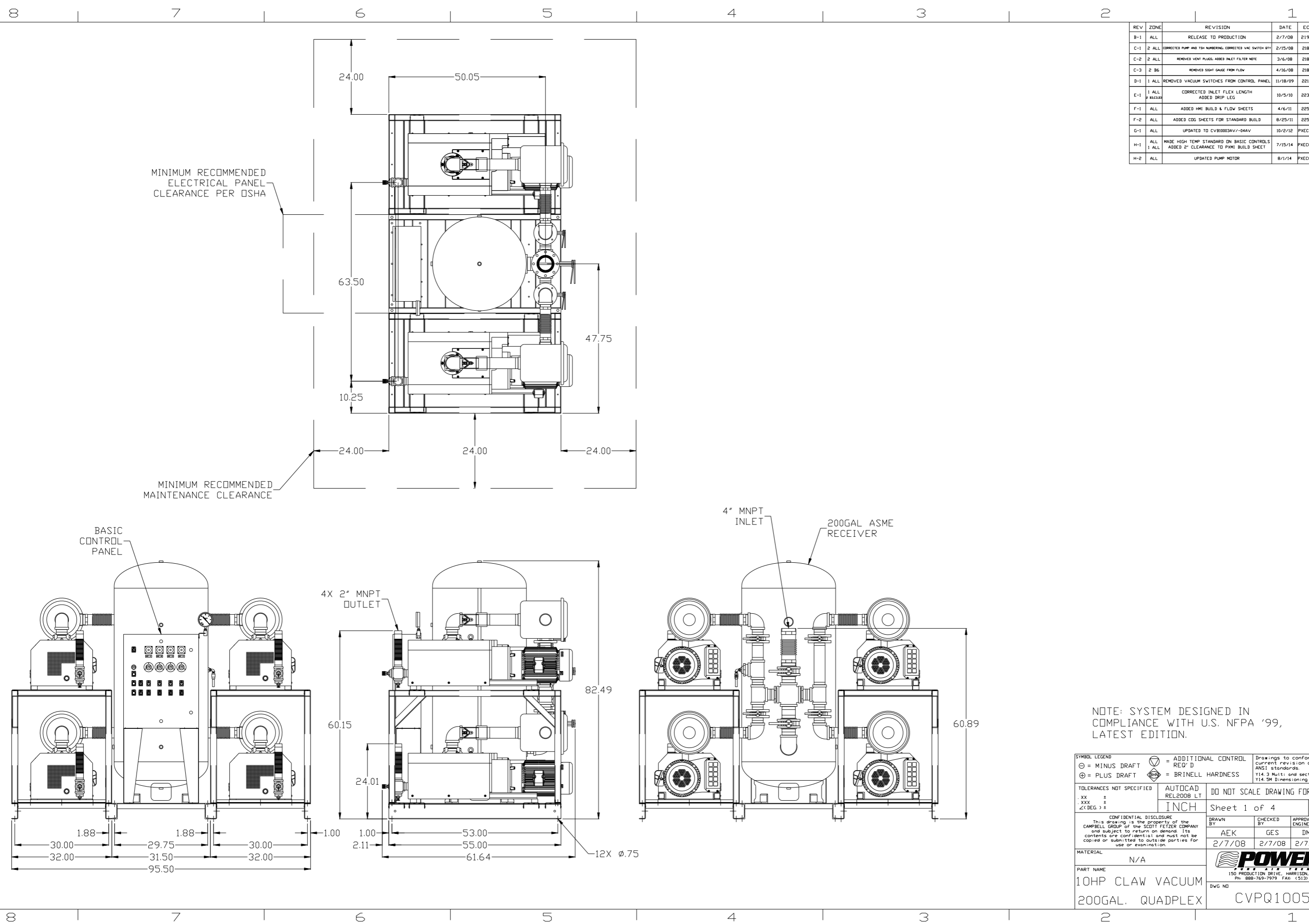
BASIC CONTROL PANEL

4" MNPT INLET  
200GAL ASME RECEIVER

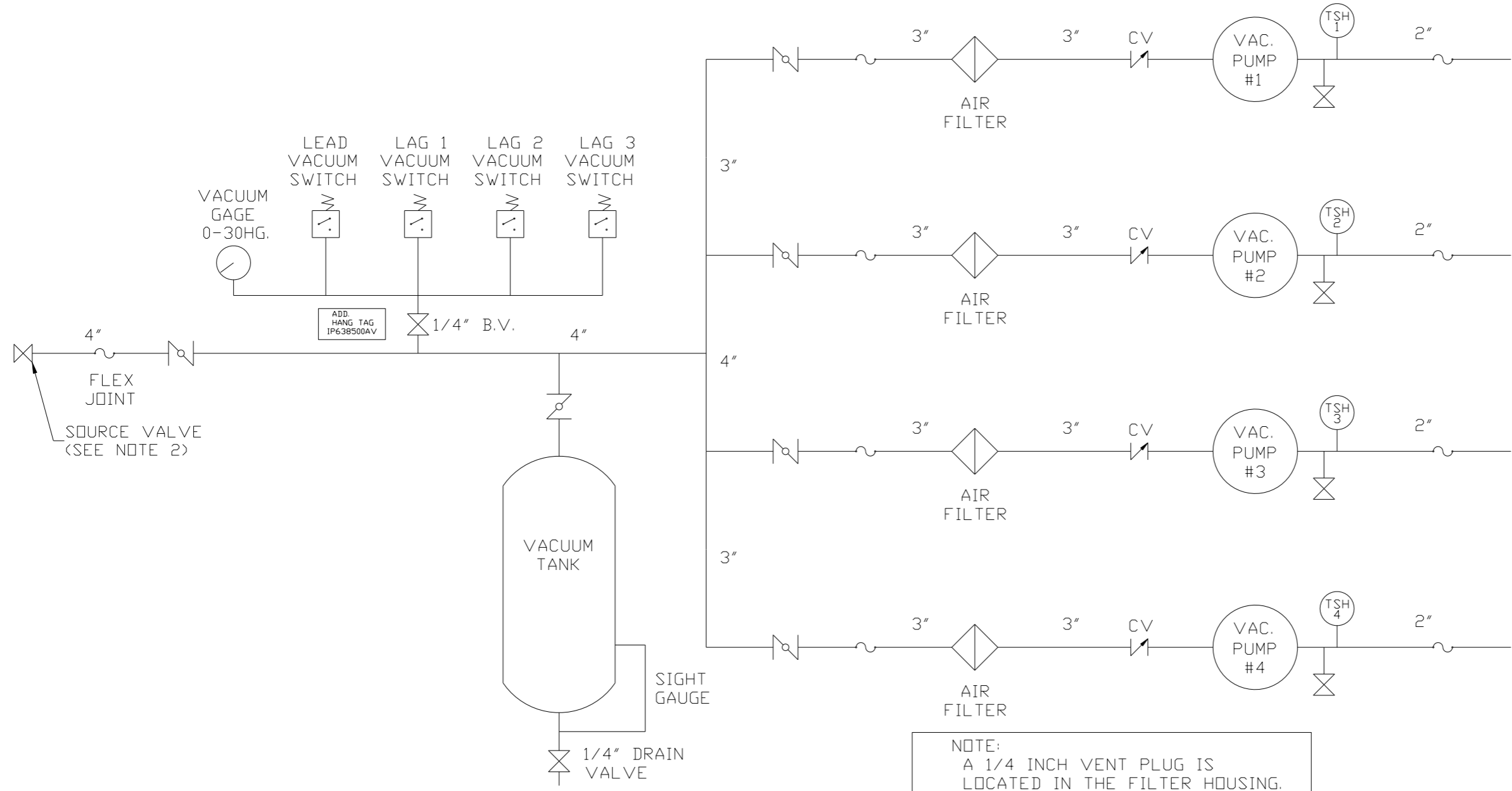
4X 2" MNPT OUTLET

NOTE: SYSTEM DESIGNED IN COMPLIANCE WITH U.S. NFPA '99, LATEST EDITION.

<b>SYMBOL LEGEND</b> ⊖ = MINUS DRAFT ⊕ = PLUS DRAFT ⊕ = BRINELL HARDNESS		= ADDITIONAL CONTROL REQ'D = BRINELL HARDNESS		Drawings to conform to the current revision of the following ANSI standards: Y14.3 Multi and sectional view dgs. Y14.5M Dimensioning and tolerancing
TOLERANCES NOT SPECIFIED .XX ± .XXX ± <X DEG > ±		AUTOCAD REL2008 LT <b>INCH</b>		<b>DO NOT SCALE DRAWING FOR DIMENSIONS</b> Sheet 1 of 4 SCALE 1:14
<b>CONFIDENTIAL DISCLOSURE</b> This drawing is the property of the CAMPBELL GROUP OF THE SCOTT FETZER COMPANY and subject to return on demand. Its contents are confidential and must not be copied or submitted to outside parties for use or examination.		DRAWN BY AEK	CHECKED BY GES	APPROVED BY ENGINEERING MFG/MKTG DMS TZ 2/7/08 2/7/08 2/7/08 2/7/08
MATERIAL N/A				PART NAME 10HP CLAW VACUUM 200GAL. QUADPLEX
		DWG NO CVPQ1005		SIZE D



REV	ZONE	REVISION	DATE	ECN	NAME	CHKD
B-1	ALL	RELEASE TO PRODUCTION	2/7/08	21906	AEK	GES
C-1	2	CORRECTED PUMP AND TSH NUMBERING CORRECTED VAC SWITCH QTY	2/15/08	21881	AEK	GES
C-2	2	REMOVED VENT PLUG; ADDED INLET FILTER NOTE	3/6/08	21881	AEK	GES
C-3	2	B6 REMOVED SIGHT GAUGE FROM FLOW	4/16/08	21881	AEK	GES
D-1	1	ALL REMOVED VACUUM SWITCHES FROM CONTROL PANEL	11/18/09	22127	AEK	GES
E-1	1	ALL CORRECTED INLET FLEX LENGTH ADDED DRIP LEG	10/5/10	22348	AEK	GES
F-1	ALL	ADDED HMI BUILD & FLOW SHEETS	4/6/11	22546	AEK	GES
F-2	ALL	ADDED CDG SHEETS FOR STANDARD BUILD	8/25/11	22546	AEK	GES
G-1	ALL	UPDATED TO CVB10003AV/-04AV	10/2/12	PXEC0013	AEK	DMS
H-1	ALL	MADE HIGH TEMP STANDARD ON BASIC CONTROLS ADDED 2" CLEARANCE TO PXMI BUILD SHEET	7/15/14	PXEC0067	AEK	GES
H-2	ALL	UPDATED PUMP MOTOR	8/1/14	PXEC0067	AEK	GES



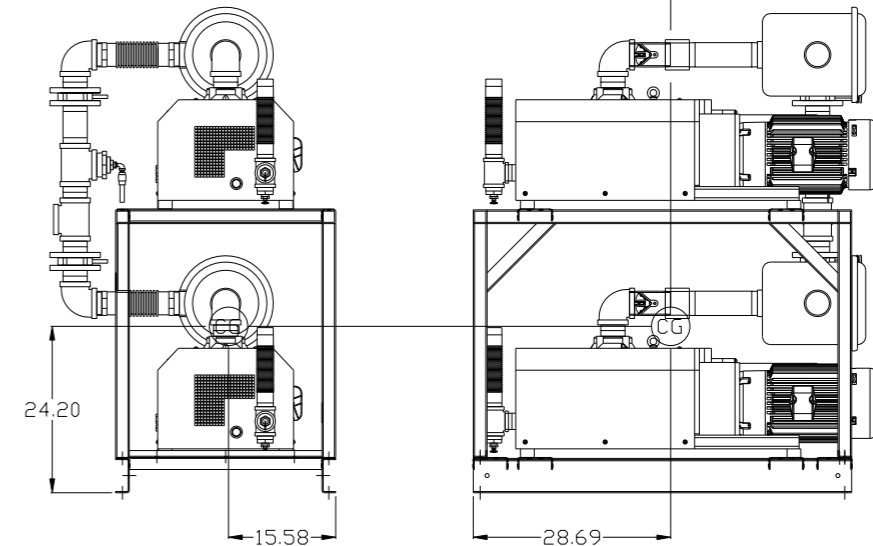
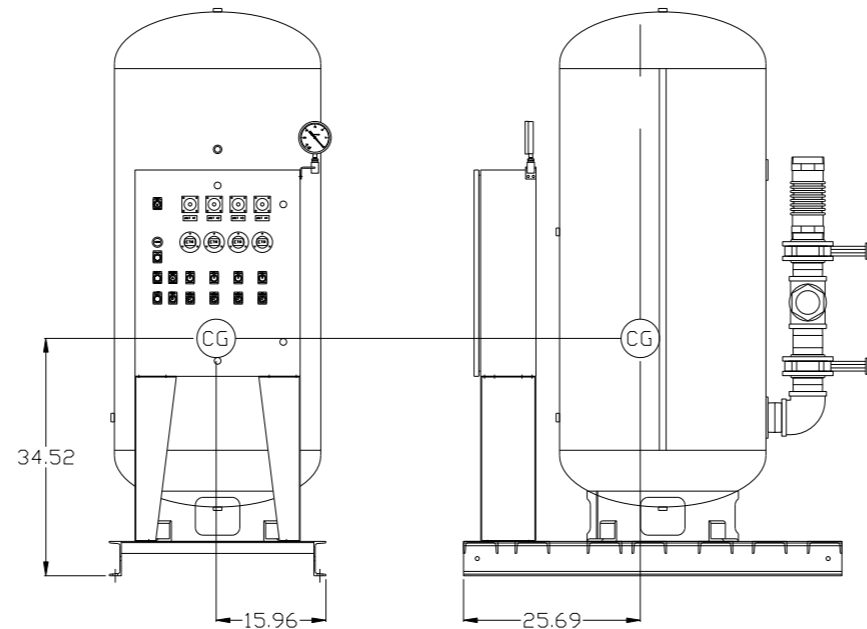
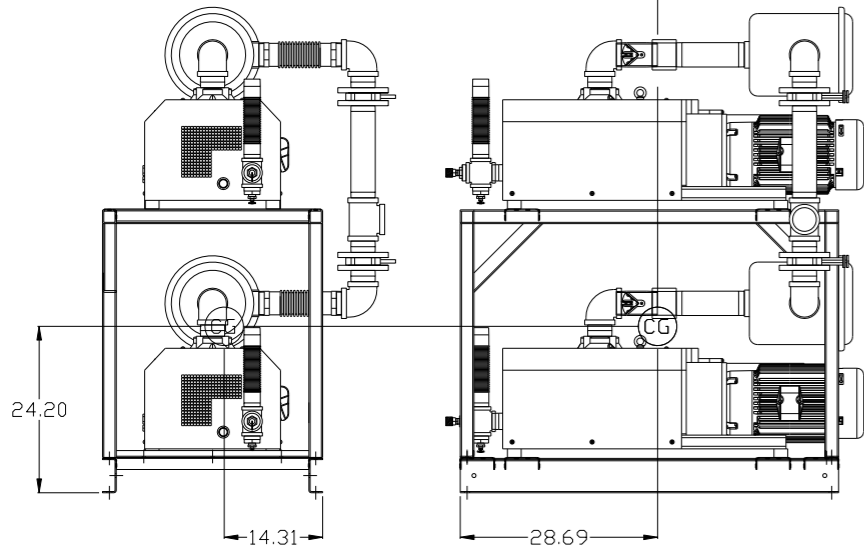
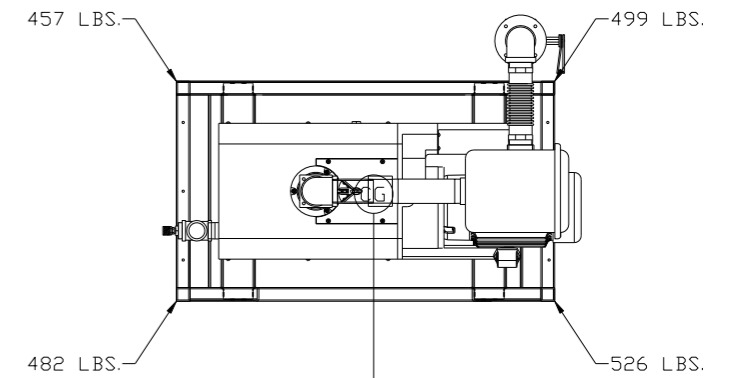
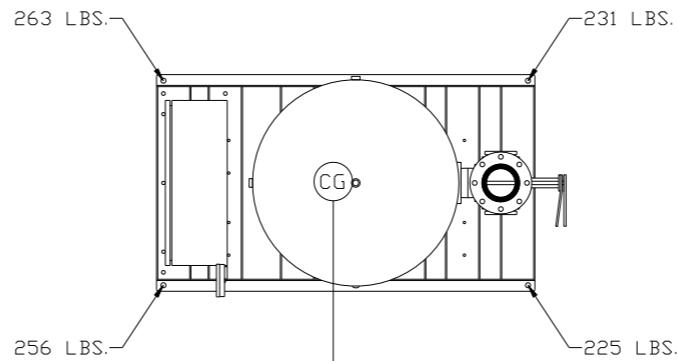
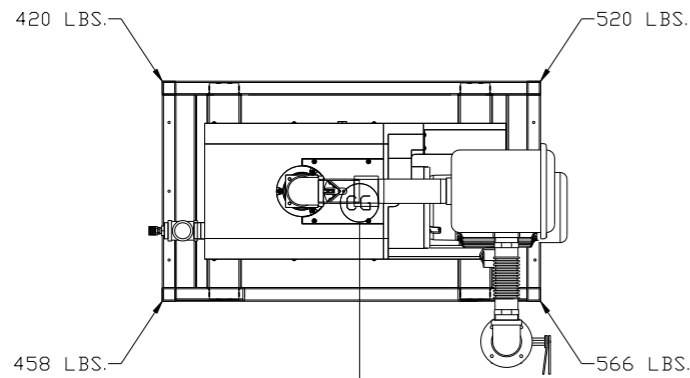
NOTE:  
A 1/4 INCH VENT PLUG IS  
LOCATED IN THE FILTER HOUSING.

LEGEND	
	TEMP. SWITCH
	VACUUM SWITCH
	AIR FILTER
	BALL VALVE
	BUTTERFLY VALVE
	VACUUM SWITCH
	CHECK VALVE
	FLEX LINE
	UNION

NOTES:  
1) TSH - TEMPERATURE SWITCH HIGH  
2) PER NFPA THE SYSTEM WILL REQUIRE A SOURCE VALVE (SUPPLIED BY OTHERS).

SYMBOL LEGEND			= ADDITIONAL CONTROL REQ'D	Drawings to conform to the current revision of the following ANSI standards:
	= MINUS DRAFT		= BRINELL HARDNESS	Y14.3 Multi and sectional view dsgs. Y14.5M Dimensioning and tolerancing
TOLERANCES NOT SPECIFIED		AUTOCAD REL2008 LT	DO NOT SCALE DRAWING FOR DIMENSIONS	
.XX ±	.XXX ±	INCH	Sheet 2 of 4	SCALE 1:14
CONFIDENTIAL DISCLOSURE This drawing is the property of the CAMPBELL GROUP OF THE SCOTT FETZER COMPANY and subject to return on demand. Its contents are confidential and must not be copied or submitted to outside parties for use or examination.				
DRAWN BY	CHECKED BY	APPROVED BY	ENGINEERING	MFG/MKTG
AEK	GES	DMS	TZ	
DATE	DATE	DATE	DATE	
2/7/08	2/7/08	2/7/08	2/7/08	
MATERIAL		N/A		
PART NAME		CLAW VAC QUADPLEX FLOW SCHEMATIC		
DWG NO		CVPQ1005		
SIZE		D		

REV	ZONE	REVISION	DATE	ECN	NAME	CHKD
F-2	ALL	ADDED CDG SHEETS FOR STANDARD BUILD	8/25/11	22546	AEK	GES
G-1	ALL	UPDATED TO CV81003AV/-04AV	10/2/12	PXEC0013	AEK	DMS
H-1	ALL	MADE HIGH TEMP STANDARD ON BASIC CONTROLS	7/15/14	PXEC0067	AEK	GES
H-2	ALL	ADDED 2" CLEARANCE TO PXM BUILD SHEET				
H-2	ALL	UPDATED PUMP MOTOR	8/1/14	PXEC0067	AEK	GES



PUMP SKID #2:

TOTAL WEIGHT: 1964 LBS  
 C.O.G. DIMENSIONS  
 X (FRONT): -14.31"  
 Y (RIGHT): 28.69"  
 Z (HEIGHT): 24.20"

PANEL/TANK SKID:

TOTAL WEIGHT: 975 LBS  
 C.O.G. DIMENSIONS  
 X (FRONT): -15.96"  
 Y (RIGHT): 25.69"  
 Z (HEIGHT): 34.52"

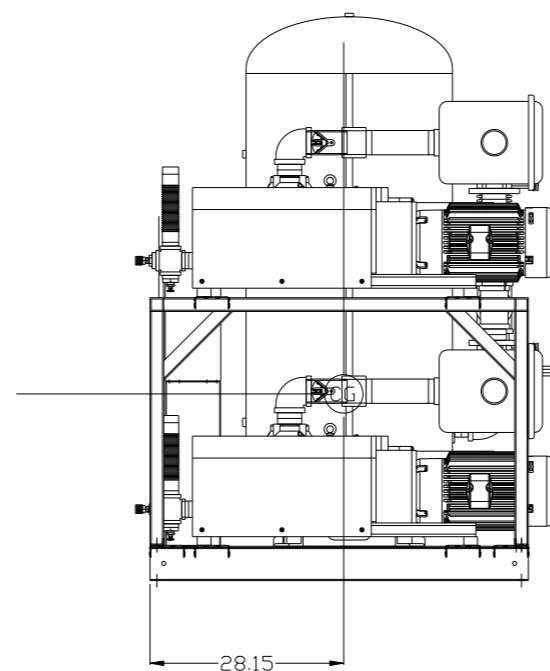
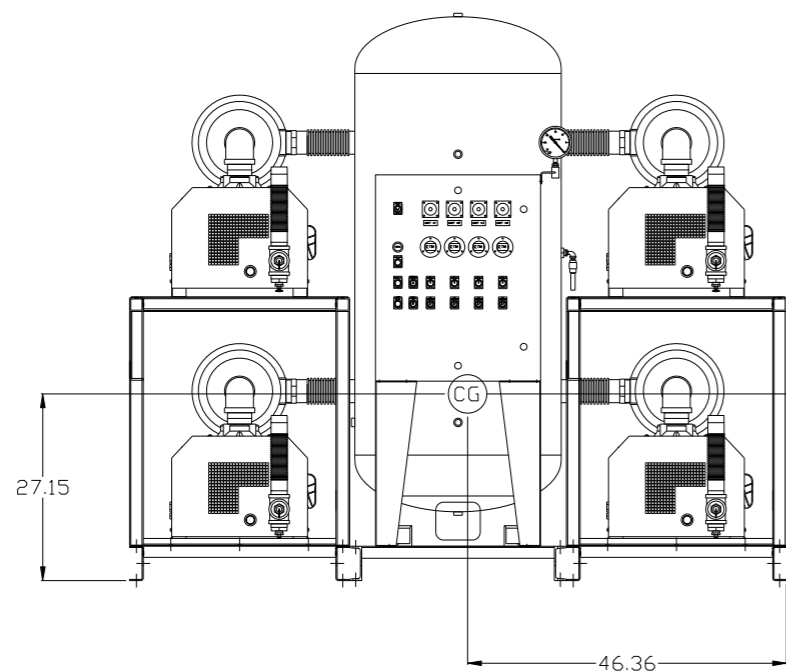
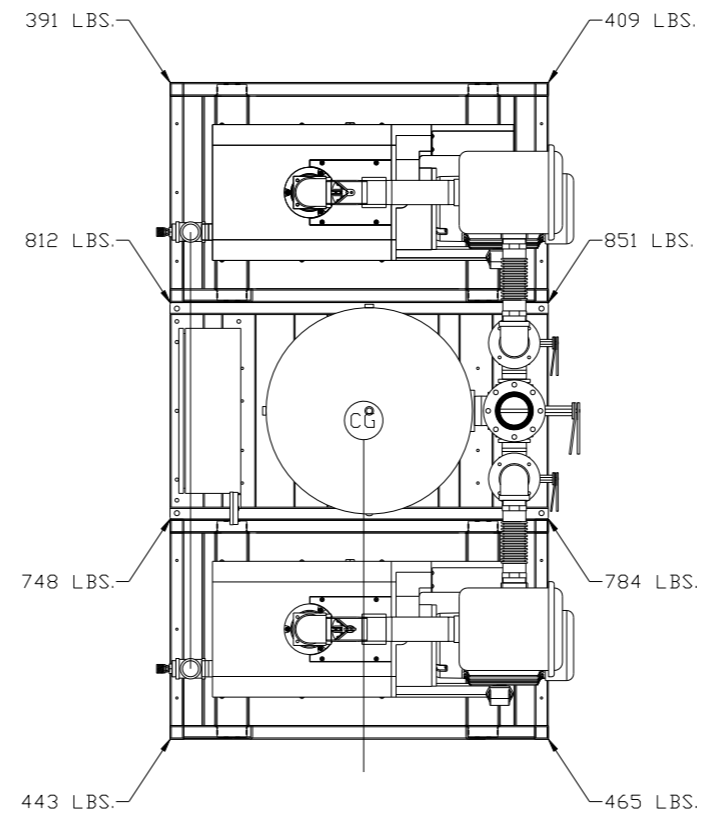
PUMP SKID #1:

TOTAL WEIGHT: 1964 LBS  
 C.O.G. DIMENSIONS  
 X (FRONT): -15.58"  
 Y (RIGHT): 28.69"  
 Z (HEIGHT): 24.20"

denotes center of gravity (CG)

<b>SYMBOL LEGEND</b> ⊖ = MINUS DRAFT ⊕ = PLUS DRAFT HRC = BRINELL HARDNESS		= ADDITIONAL CONTROL REQ'D = BRINELL HARDNESS		Drawings to conform to the current revision of the following ANSI standards: Y14.3 Multi and sectional view dgs. Y14.5M Dimensioning and tolerancing
TOLERANCES NOT SPECIFIED .XX ± .XXX ± <DEG. > ±		AUTOCAD REL2008 LT INCH		DO NOT SCALE DRAWING FOR DIMENSIONS Sheet 3 of 4 SCALE 1:14
<b>CONFIDENTIAL DISCLOSURE</b> This drawing is the property of the CAMPBELL GROUP OF THE SCOTT FETZER COMPANY and subject to return on demand. Its contents are confidential and must not be copied or submitted to outside parties for use or examination.				
DRAWN BY AEK		CHECKED BY GES		APPROVED BY DMS JJ
MATERIAL N/A		8/25/11		8/25/11 8/25/11 8/25/11 8/25/11
PART NAME 10HP CLAW VACUUM 200GAL. QUADPLEX		 150 PRODUCTION DRIVE, HARRISON, OHIO 45030 Ph: 888-769-7979 FAX: (513) 367-3125		DWG NO CVPQ1005 SIZE D

REV	ZONE	REVISION	DATE	ECN	NAME	CHKD
F-2	ALL	ADDED CDG SHEETS FOR STANDARD BUILD	8/25/11	22546	AEK	GES
G-1	ALL	UPDATED TO CV81003AV/-04AV	10/2/12	PXEC0013	AEK	DMS
H-1	ALL	MADE HIGH TEMP STANDARD ON BASIC CONTROLS	7/15/14	PXEC0067	AEK	GES
H-2	ALL	ADDED 2" CLEARANCE TO PXM BUILD SHEET				
H-2	ALL	UPDATED PUMP MOTOR	8/1/14	PXEC0067	AEK	GES



denotes center of gravity (CG)

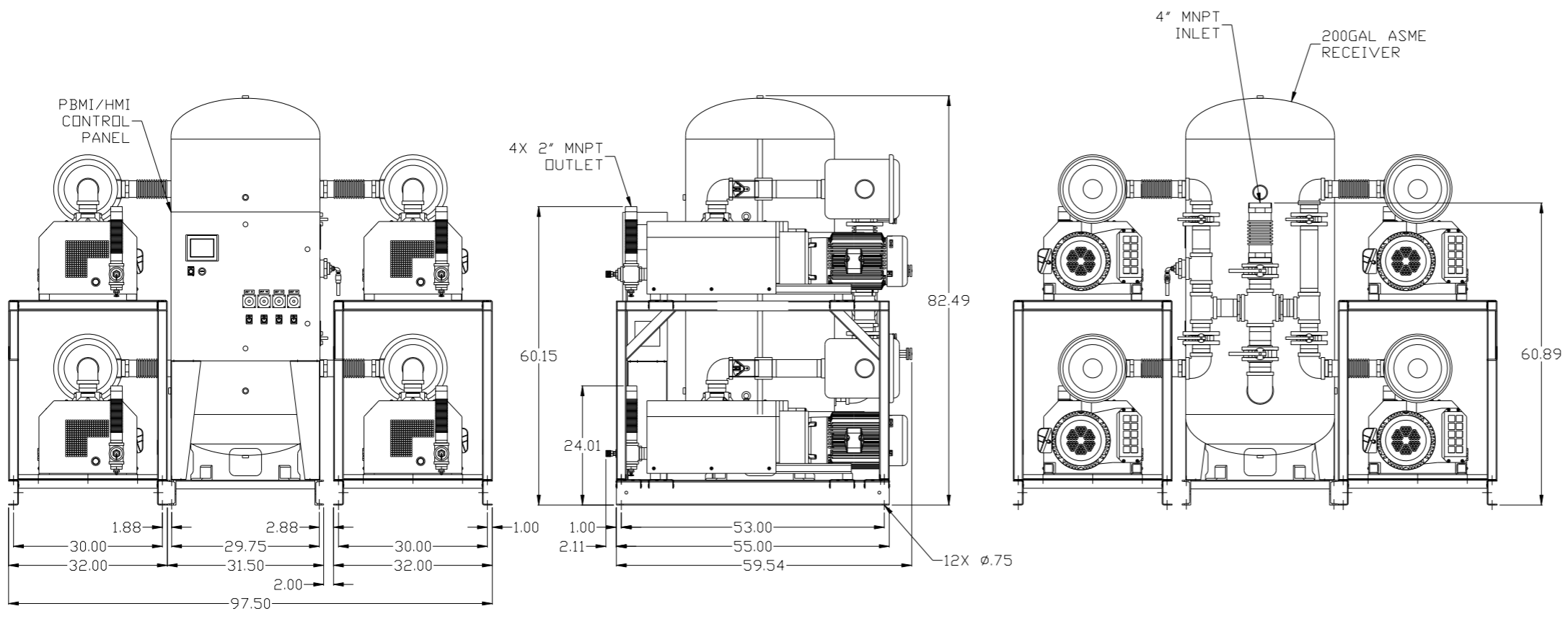
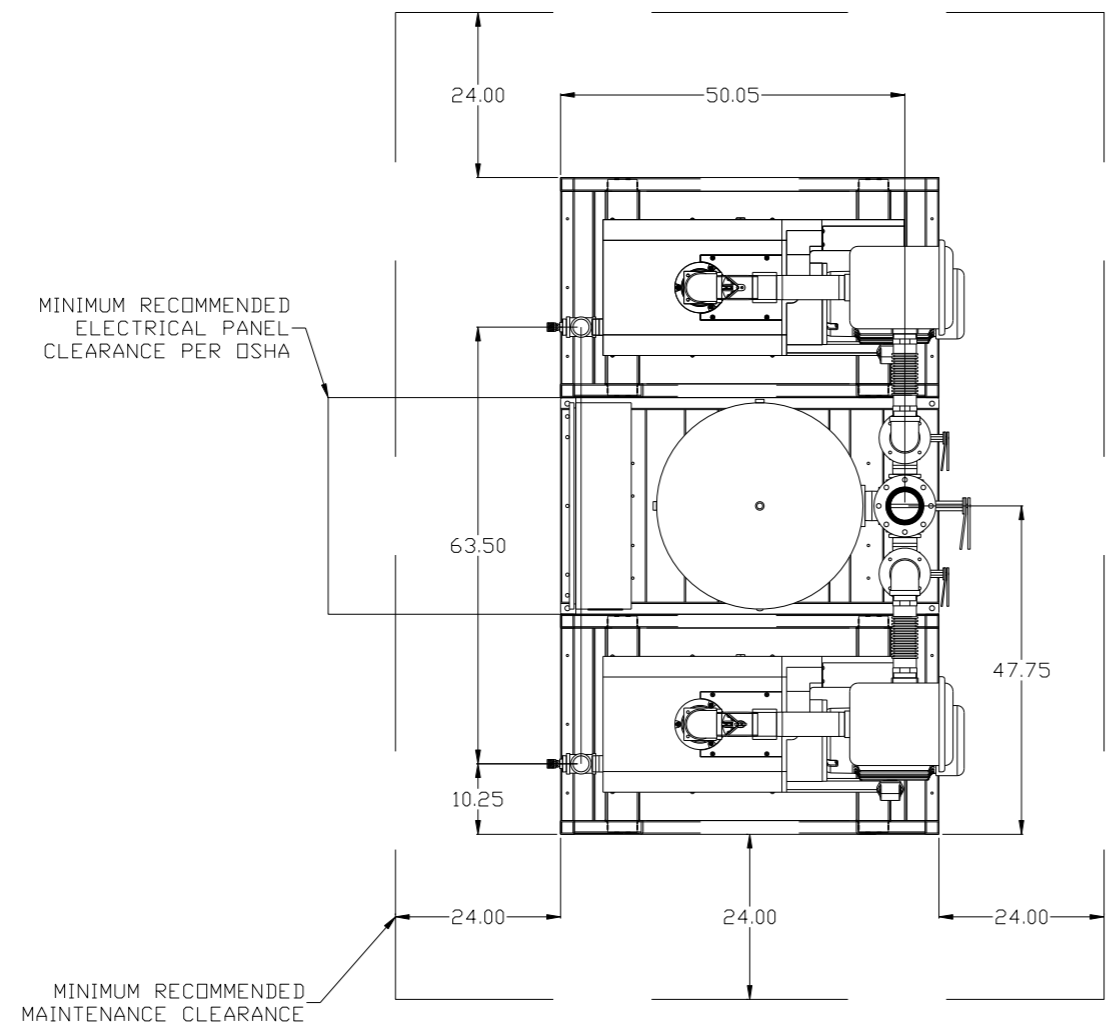
VACUUM SYSTEM:

TOTAL WEIGHT: 4903 LBS  
 C.O.G. DIMENSIONS  
 X (FRONT): -46.36"  
 Y (RIGHT): 28.15"  
 Z (HEIGHT): 27.15"

SYMBOL LEGEND		= ADDITIONAL CONTROL REQ'D		Drawings to conform to the current revision of the following ANSI standards:	
⊖	MINUS DRAFT	⊕	PLUS DRAFT	Ⓢ	BRINELL HARDNESS
TOLERANCES NOT SPECIFIED		AUTOCAD REL2008 LT		DO NOT SCALE DRAWING FOR DIMENSIONS	
.XX ±	.XXX ±	INCH		Sheet 4 of 4	SCALE 1:14
CONFIDENTIAL DISCLOSURE: This drawing is the property of the CAMPBELL GROUP of the SCOTT FETZER COMPANY and subject to return on demand. Its contents are confidential and must not be copied or submitted to outside parties for use or examination.		DRAWN BY	CHECKED BY	APPROVED BY	ENGINEERING MFG/MKTG
		AEK	GES	DMS	JJ
		8/25/11	8/25/11	8/25/11	8/25/11
MATERIAL		N/A		 150 PRODUCTION DRIVE, HARRISON, OHIO 45030 Ph: 888-769-7979 FAX: (513) 367-3125	
PART NAME		10HP CLAW VACUUM		SIZE	
200GAL. QUADPLEX		CVPQ1005		D	

8 7 6 5 4 3 2 1

REV	ZONE	REVISION	DATE	ECN	NAME	CHKD
F-1	ALL	ADDED HMI BUILD & FLOW SHEETS	4/6/11	22546	AEK	GES
F-2	ALL	ADDED COG SHEETS FOR STANDARD BUILD	8/25/11	22546	AEK	GES
G-1	ALL	UPDATED TO CVB1003AVV-04AV	10/2/12	PXEC0013	AEK	DMS
H-1	ALL	MADE HIGH TEMP STANDARD DN BASIC CONTROLS ADDED 2" CLEARANCE TO PXMI BUILD SHEET	7/15/14	PXEC0067	AEK	GES
H-2	ALL	UPDATED PUMP MOTOR	8/1/14	PXEC0067	AEK	GES

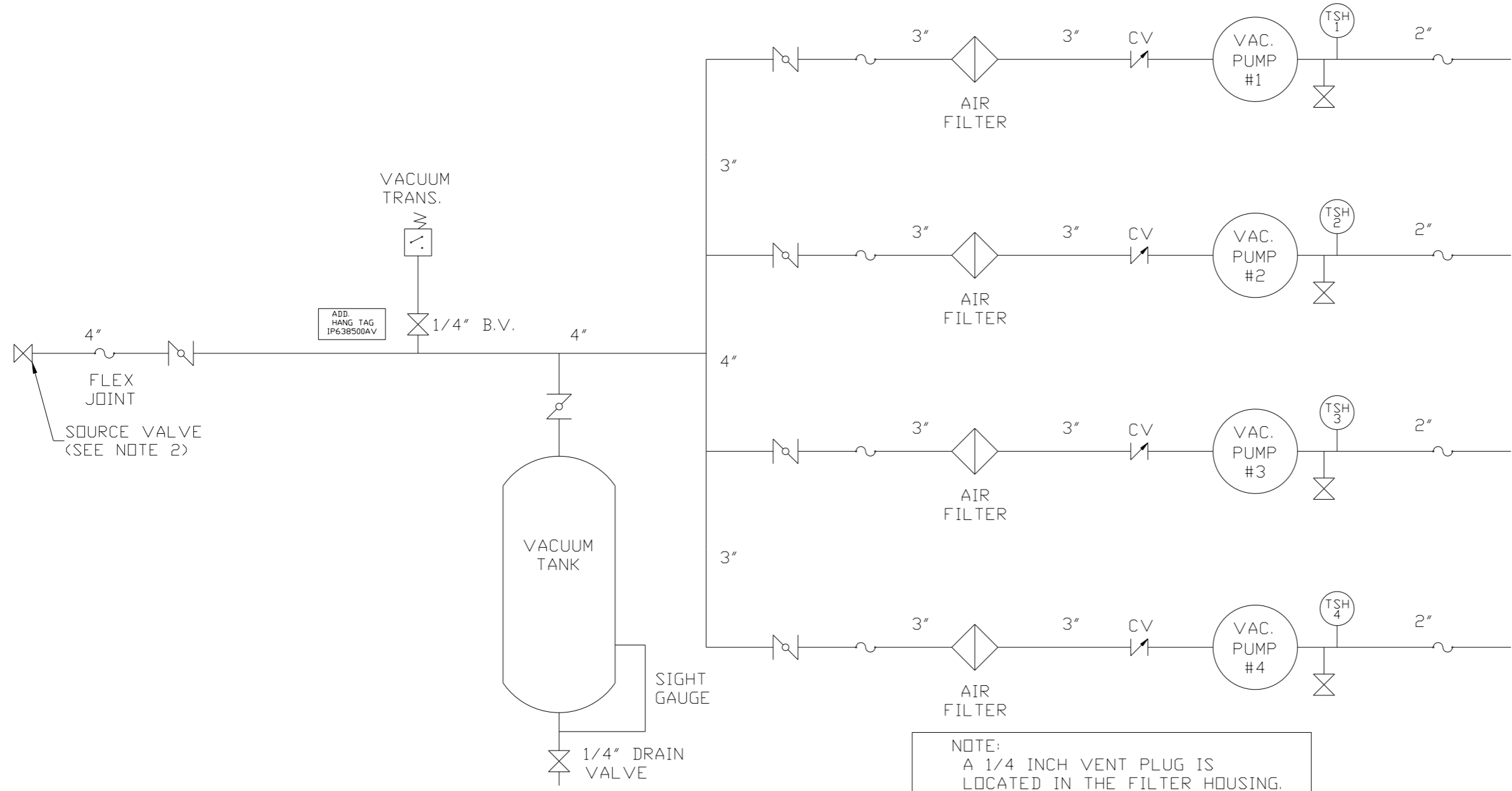


NOTE: SYSTEM DESIGNED IN COMPLIANCE WITH U.S. NFPA '99, LATEST EDITION.

<b>SYMBOL LEGEND</b> ⊖ = MINUS DRAFT ⊕ = PLUS DRAFT ⊕ = ADDITIONAL CONTROL REQ'D ⊕ = BRINELL HARDNESS		Drawings to conform to the current revision of the following ANSI standards: Y14.3 Multi and sectional view dsgs. Y14.5M Dimensioning and tolerancing	
<b>TOLERANCES NOT SPECIFIED</b> .XX ± .XXX ± <DEG> ±		<b>DO NOT SCALE DRAWING FOR DIMENSIONS</b> Sheet 1 of 3 SCALE 1:14	
<b>CONFIDENTIAL DISCLOSURE</b> This drawing is the property of the CAMPBELL GROUP OF THE SCOTT FETZER COMPANY and subject to return on demand. Its contents are confidential and must not be copied or submitted to outside parties for use or examination.		<b>AUTOCAD</b> REL2008 LT <b>INCH</b>	
<b>MATERIAL</b> N/A		<b>DO NOT SCALE DRAWING FOR DIMENSIONS</b> DRAWN BY: AEK CHECKED BY: GES ENGINEERING: DMS, RJR MFG/MKTG: RJR 4/6/11 4/6/11 4/6/11 4/6/11	
<b>PART NAME</b> 10HP CLAW VACUUM 200GAL. QUADPLEX		<b>POWEREX</b> 150 PRODUCTION DRIVE, HARRISON, OHIO 45030 Ph 888-769-7979 FAX (513) 367-3125	
<b>DWG NO</b> CVPQ1005		<b>SIZE</b> D	

8 7 6 5 4 3 2 1

REV	ZONE	REVISION	DATE	ECN	NAME	CHKD
F-1	ALL	ADDED HMI BUILD & FLOW SHEETS	4/6/11	22546	AEK	GES
F-2	ALL	ADDED COG SHEETS FOR STANDARD BUILD	8/25/11	22546	AEK	GES
G-1	ALL	UPDATED TO CVB10003AV/-04AV	10/2/12	PXEC0013	AEK	DMS
H-1	ALL	MADE HIGH TEMP STANDARD DN BASIC CONTROLS	7/15/14	PXEC0067	AEK	GES
H-2	ALL	UPDATED PUMP MOTOR	8/1/14	PXEC0067	AEK	GES



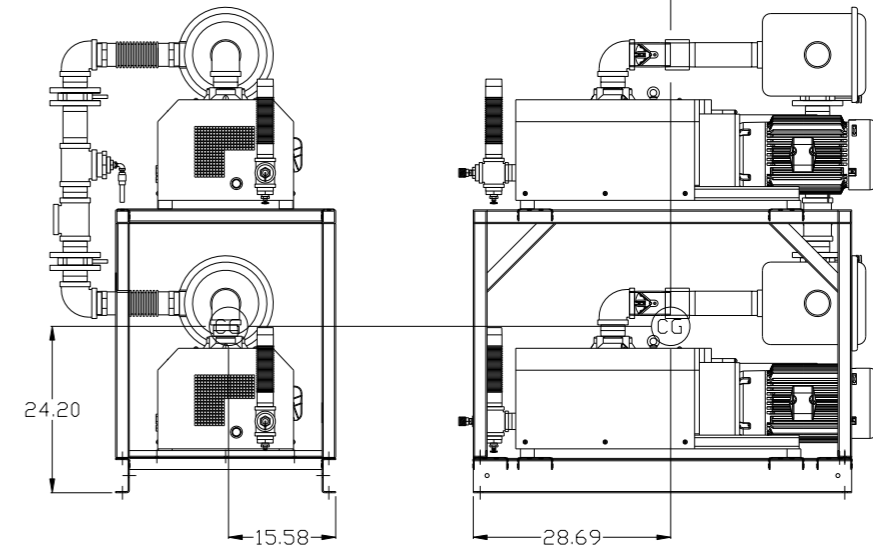
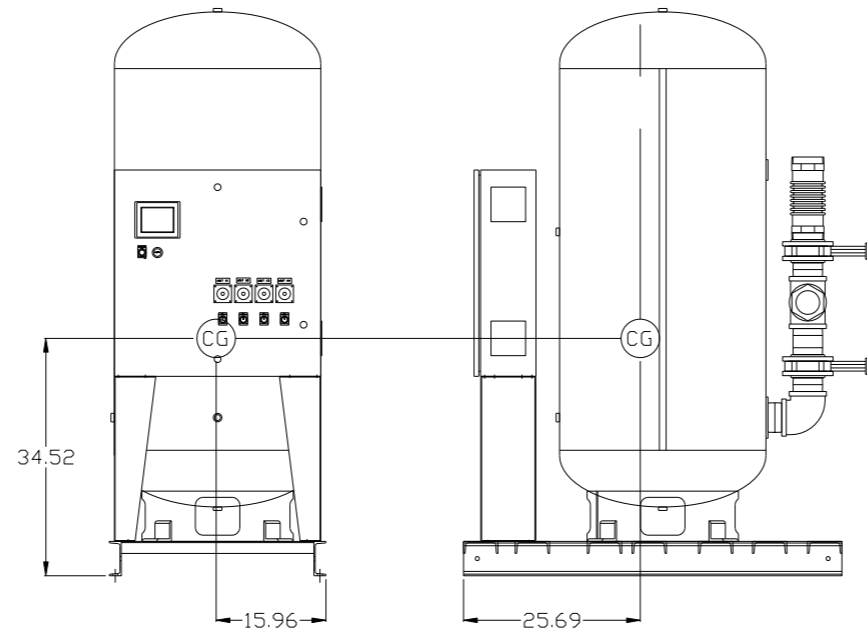
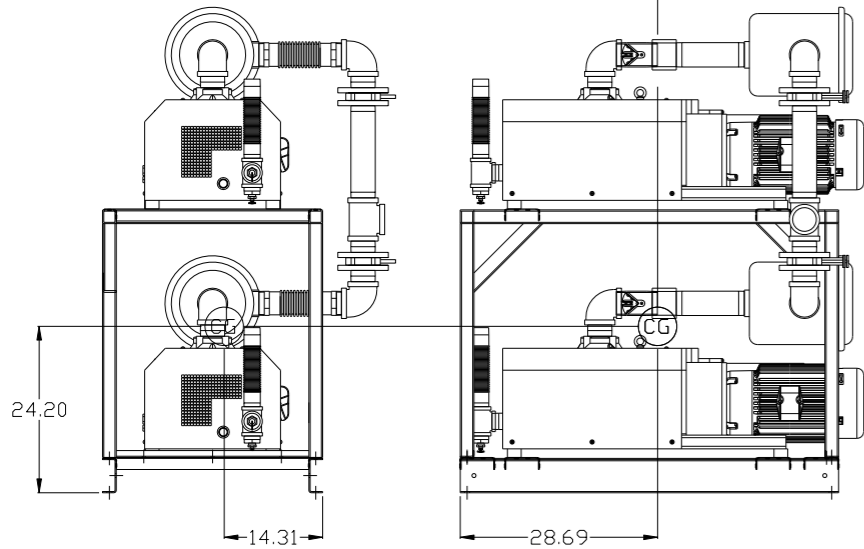
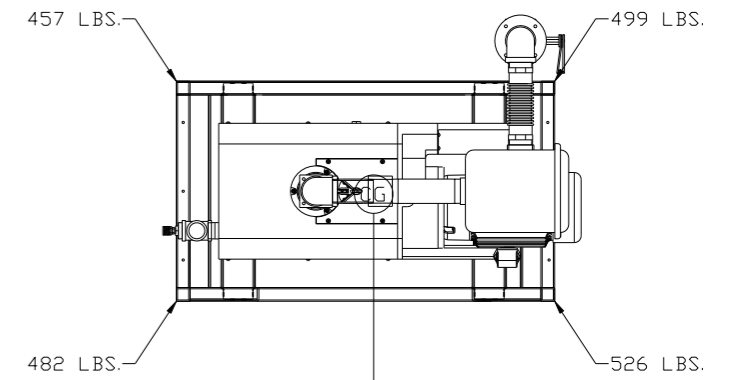
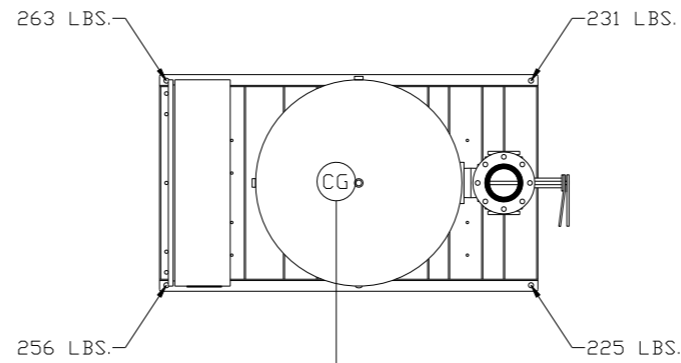
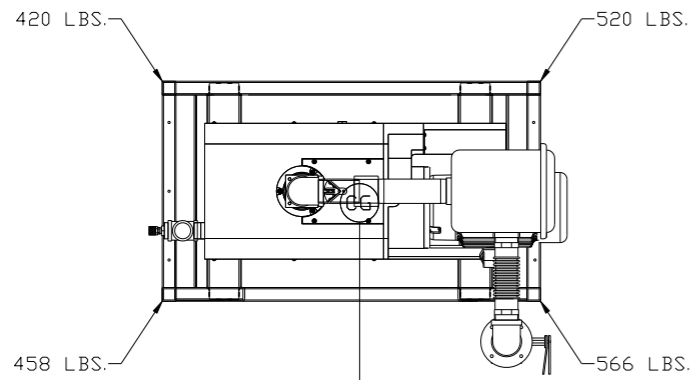
NOTE:  
A 1/4 INCH VENT PLUG IS  
LOCATED IN THE FILTER HOUSING.

LEGEND	
	TEMP. SWITCH
	VACUUM SWITCH
	AIR FILTER
	BALL VALVE
	BUTTERFLY VALVE
	CHECK VALVE
	FLEX LINE
	UNION

NOTES:  
1) TSH - TEMPERATURE SWITCH HIGH  
2) PER NFPA THE SYSTEM WILL REQUIRE A SOURCE VALVE (SUPPLIED BY OTHERS).

SYMBOL LEGEND		= ADDITIONAL CONTROL REQ'D = BRINELL HARDNESS		Drawings to conform to the current revision of the following ANSI standards: Y14.3 Multi and sectional view dgs. Y14.5M Dimensioning and tolerancing
TOLERANCES NOT SPECIFIED	AUTOCAD REL2008 LT	DO NOT SCALE DRAWING FOR DIMENSIONS		SCALE 1:14
.XX ±		Sheet 2 of 3		
.XXX ±		DRAWN BY		SCALE
<<DEG>> ±		AEK	CHECKED BY	
CONFIDENTIAL DISCLOSURE		GES	ENGINEERING	
This drawing is the property of the CAMPBELL GROUP OF THE SCOTT FETZER COMPANY and subject to return on demand. Its contents are confidential and must not be copied or submitted to outside parties for use or examination.		DMS	MFG/MRKTG	
MATERIAL		4/6/11	4/6/11	4/6/11
PART NAME		 150 PRODUCTION DRIVE, HARRISON, OHIO 45030 Ph: 888-769-7979 FAX: (513) 367-3125		
CLAW VAC QUADPLEX FLOW SCHEMATIC		DWG NO		SIZE
		CVPQ1005		D

REV	ZONE	REVISION	DATE	ECN	NAME	CHKD
F-2	ALL	ADDED CDG SHEETS FOR STANDARD BUILD	8/25/11	22546	AEK	GES
G-1	ALL	UPDATED TO CV81003AV/-04AV	10/2/12	PXEC0013	AEK	DMS
H-1	ALL	MADE HIGH TEMP STANDARD ON BASIC CONTROLS	7/15/14	PXEC0067	AEK	GES
H-1	ALL	ADDED 2" CLEARANCE TO PXM BUILD SHEET				
H-2	ALL	UPDATED PUMP MOTOR	8/1/14	PXEC0067	AEK	GES



PUMP SKID #2:

TOTAL WEIGHT: 1964 LBS  
 C.O.G. DIMENSIONS  
 X (FRONT): -14.31"  
 Y (RIGHT): 28.69"  
 Z (HEIGHT): 24.20"

PANEL/TANK SKID:

TOTAL WEIGHT: 975 LBS  
 C.O.G. DIMENSIONS  
 X (FRONT): -15.96"  
 Y (RIGHT): 25.69"  
 Z (HEIGHT): 34.52"

PUMP SKID #1:

TOTAL WEIGHT: 1964 LBS  
 C.O.G. DIMENSIONS  
 X (FRONT): -15.58"  
 Y (RIGHT): 28.69"  
 Z (HEIGHT): 24.20"

denotes center of gravity (CG)

SYMBOL LEGEND		= ADDITIONAL CONTROL REQ'D		Drawings to conform to the current revision of the following ANSI standards:	
⊖	MINUS DRAFT	⊕	PLUS DRAFT	⊖	Y14.3 Multi and sectional view dgs.
⊕	PLUS DRAFT	⊖	MINUS DRAFT	⊖	Y14.5M Dimensioning and tolerancing
TOLERANCES NOT SPECIFIED		AUTOCAD REL2008 LT		DO NOT SCALE DRAWING FOR DIMENSIONS	
.XX ±		INCH		Sheet 3 of 3	SCALE 1:14
.XXX ±					
<<DEG>> ±					
CONFIDENTIAL DISCLOSURE					
This drawing is the property of the CAMPBELL GROUP OF THE SCOTT FETZER COMPANY and subject to return on demand. Its contents are confidential and must not be copied or submitted to outside parties for use or examination.					
DRAWN BY		CHECKED BY		APPROVED BY	
AEK		GES		DMS JJ	
8/25/11		8/25/11		8/25/11 8/25/11	
MATERIAL		N/A		 150 PRODUCTION DRIVE, HARRISON, OHIO 45030 Ph: 888-769-7979 FAX: (513) 367-3125	
PART NAME		200GAL. QUADPLEX		SIZE D	
DWG NO		CVPQ1005		CVPQ1005B.dwg	