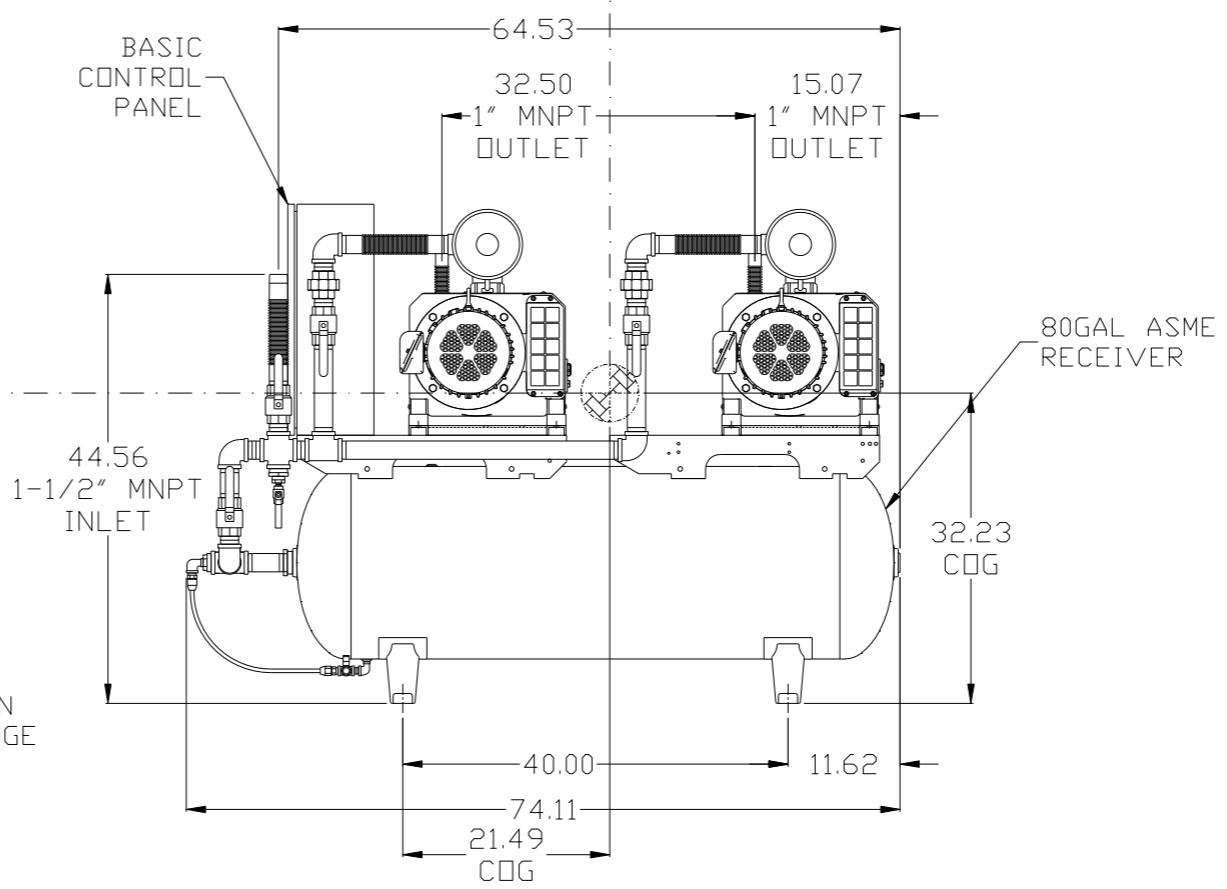
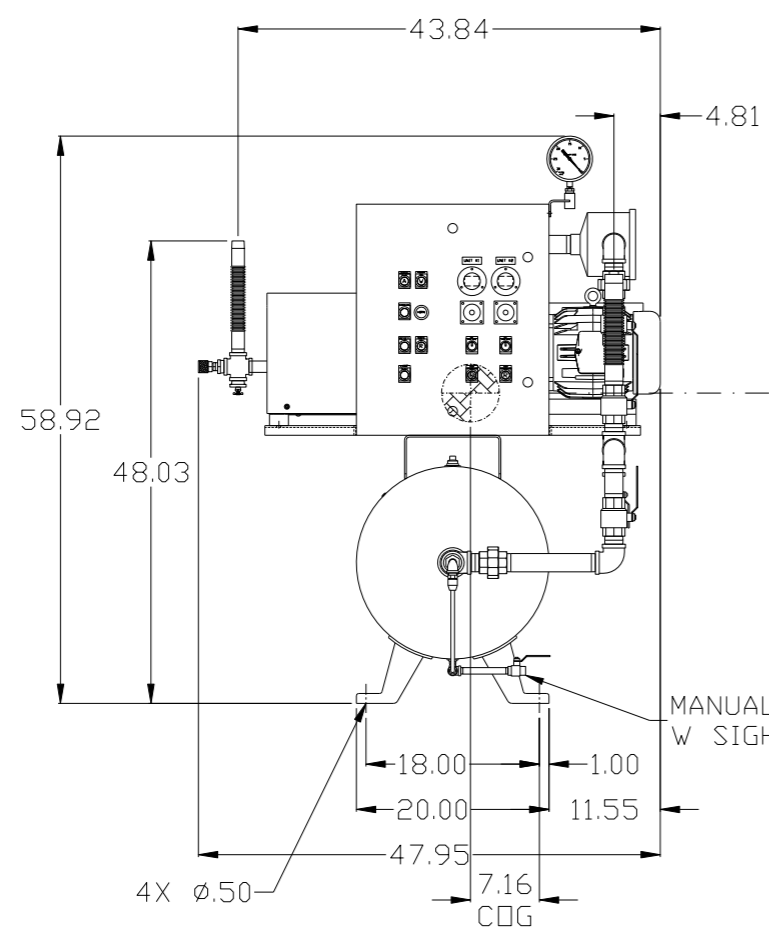
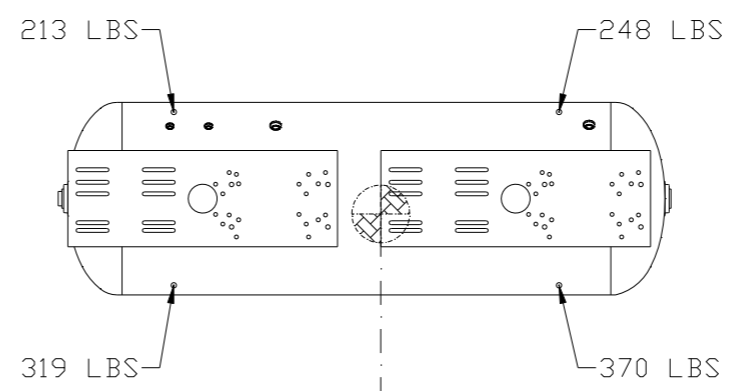


8 7 6 5 4 3 2 1

REV	ZONE	REVISION	DATE	ECN	NAME	CHKD
B-1	ALL	RELEASE TO PRODUCTION	2/28/08	21881	AEK	GES
B-2	2 ALL	ADDED PIPING SIZES TO FLOW SCHEMATIC	3/27/08	21881	AEK	GES
C-1	1 ALL	MOVED INLET PLUMBING TO MOTOR SIDE OF UNIT	10/3/08	21906	AEK	GES
D-1	1 ALL	ADJUSTED SYSTEM INLET LOCATION	1/9/09	22127	AEK	DMS
D-2	1 ALL	ADJUSTED SYSTEM INLET LOCATION PER NEC	5/27/09	22127	AEK	DMS
E-1	1 ALL	RELOCATED PANEL & INLET PLUMBING	10/2/09	22303	AEK	GES
F-1	1 ALL	REMOVED VACUUM SWITCHES FROM CONTROL PANEL	11/2/09	22127	AEK	GES
G-1	2 82.02	ADDED DRIP LEG	3/16/10	22348	AEK	DMS
H-1	1 ALL	ADDED CENTER OF GRAVITY INFORMATION	2/3/11	22546	AEK	GES
J-1	ALL	ADDED PBM SHEETS	12/19/11	22610	AEK	GES
K-1	2 85 2 ALL	ADDED SIGHT GAUGE ADDED SOURCE VALVE INFORMATION	10/10/12	22723	AEK	DMS
L-1	ALL	MADE HIGH TEMP STANDARD ON BASIC CONTROLS	7/7/14	PXEC0048	AEK	GES
M-1	1 ALL	UPDATED TO PUMP WITH NEMA RATED MOTOR	6/27/16	PXEC0149	AEK	GES



CENTER OF GRAVITY INFO:
 TOTAL WT - 1150 LBS.
 X(FRONT) - -7.57
 Y(RIGHT) - 21.49
 Z(HEIGHT) - 32.23

DENOTES CENTER OF GRAVITY

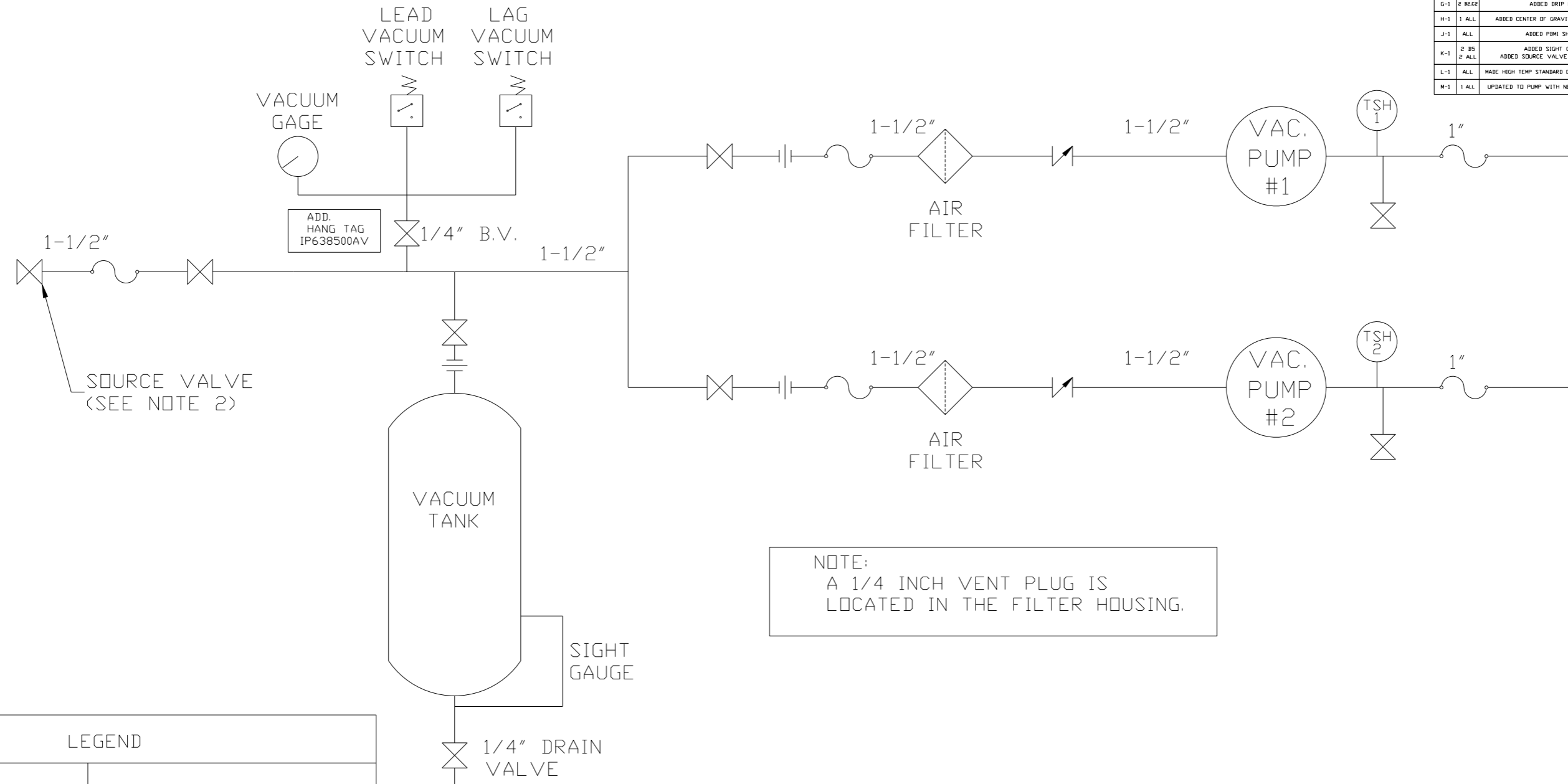
NOTE: SYSTEM DESIGNED IN COMPLIANCE WITH U.S. NFPA '99, LATEST EDITION.

NOTE: A MINIMUM OF 24" CLEARANCE IS RECOMMENDED AROUND THE ENTIRE UNIT.

SYMBOL LEGEND ⊖ = MINUS DRAFT ⊕ = PLUS DRAFT ⊕ = ADDITIONAL CONTROL REQ'D HRC = BRINELL HARDNESS		Drawings to conform to the current revision of the following ANSI standards: Y14.3 Multi and sectional view dgs. Y14.5M Dimensioning and tolerancing	
TOLERANCES NOT SPECIFIED .XX ± .XXX ± <<DEG> ±		AUTOCAD REL2008 LT INCH DO NOT SCALE DRAWING FOR DIMENSIONS Sheet 1 of 2 SCALE 1:10	
CONFIDENTIAL DISCLOSURE This drawing is the property of POWEREX, INC. of the SCOTT FELTZER COMPANY and subject to return on demand. Its contents are confidential and must not be copied or submitted to outside parties for use or examination.			
DRAWN BY AEK		CHECKED BY GES	
APPROVED BY DMS		ENGINEERING RJR	
DATE 2/28/08		DATE 2/28/08	
DATE 2/28/08		DATE 2/28/08	
MATERIAL N/A		 150 PRODUCTION DRIVE, HARRISON, OHIO 45030 Ph 888-769-7979 FAX (513) 367-3125	
PART NAME 3HP CLAW VAC 80G DUPLEX		DWG NO CVTD0303 SIZE D	

8 7 6 5 4 3 2 1

REV	ZONE	REVISION	DATE	ECN	NAME	CHKD
B-1	ALL	RELEASE TO PRODUCTION	2/28/08	21881	AEK	GES
B-2	2 ALL	ADDED PIPING SIZES TO FLOW SCHEMATIC	3/27/08	21881	AEK	GES
C-1	1 ALL	MOVED INLET PLUMBING TO MOTOR SIDE OF UNIT	10/3/08	21906	AEK	GES
D-1	1 ALL	ADJUSTED SYSTEM INLET LOCATION	1/9/09	22127	AEK	DMS
D-2	1 ALL	ADJUSTED SYSTEM INLET LOCATION PER NEC	5/27/09	22127	AEK	DMS
E-1	1 ALL	RELOCATED PANEL & INLET PLUMBING	10/2/09	22303	AEK	GES
F-1	1 ALL	REMOVED VACUUM SWITCHES FROM CONTROL PANEL	11/2/09	22127	AEK	GES
G-1	2 B2,C2	ADDED DRIP LEG	3/16/10	22348	AEK	DMS
H-1	1 ALL	ADDED CENTER OF GRAVITY INFORMATION	2/3/11	22546	AEK	GES
J-1	ALL	ADDED P&ID SHEETS	12/19/11	22610	AEK	GES
K-1	2 B5 2 ALL	ADDED SIGHT GAUGE ADDED SOURCE VALVE INFORMATION	10/10/12	22723	AEK	DMS
L-1	ALL	MADE HIGH TEMP STANDARD ON BASIC CONTROLS	7/7/14	PXEC0048	AEK	GES
M-1	1 ALL	UPDATED TO PUMP WITH NEMA RATED MOTOR	6/27/16	PXEC0149	AEK	GES



NOTE:
A 1/4 INCH VENT PLUG IS
LOCATED IN THE FILTER HOUSING.

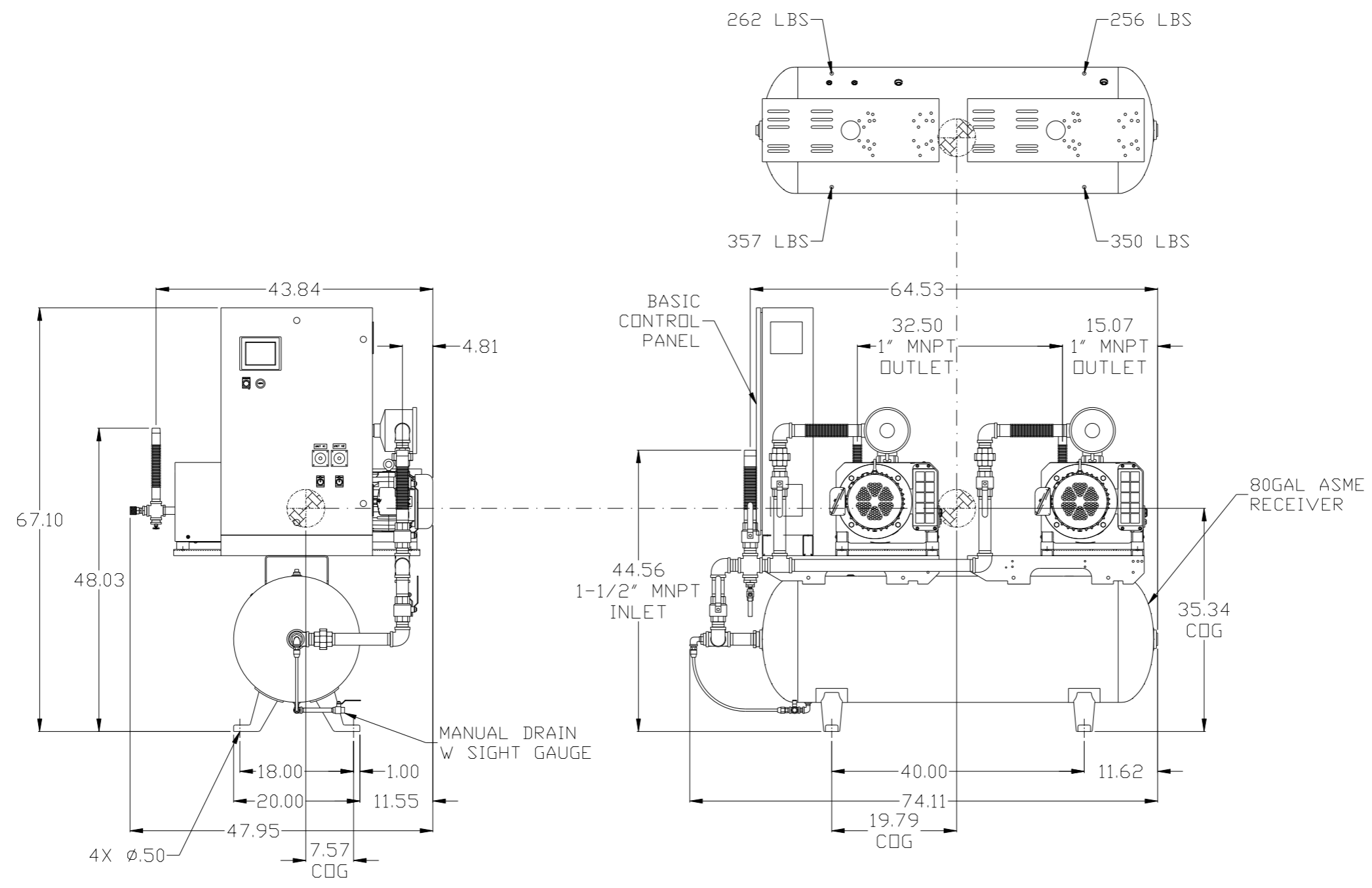
LEGEND	
	TEMP. SWITCH
	AIR FILTER
	BALL VALVE
	VACUUM SWITCH
	CHECK VALVE
	FLEX LINE
	UNION

NOTES:
1) TSH - TEMPERATURE SWITCH HIGH
2) PER NFPA THE SYSTEM WILL REQUIRE A SOURCE VALVE (SUPPLIED BY OTHERS).

SYMBOL LEGEND			= ADDITIONAL CONTROL REQ'D		Drawings to conform to the current revision of the following ANSI standards: Y14.3 Multi and sectional view dgs. Y14.5M Dimensioning and tolerancing
TOLERANCES NOT SPECIFIED			= BRINELL HARDNESS		
.XX ±	AUTOCAD	DO NOT SCALE DRAWING FOR DIMENSIONS		SCALE	
.XXX ±	REL2008 LT	Sheet 2 of 2		1:10	
<<DEG> ±	INCH	CONFIDENTIAL DISCLOSURE		DRAWN BY	
This drawing is the property of POWEREX, INC. or the SCOTT FETZER COMPANY and subject to return on demand. Its contents are confidential and must not be copied or submitted to outside parties for use or examination.		CHECKED BY	APPROVED BY	MFG/MKTG	
		AEK	GES	DMS	RJR
		2/28/08	2/28/08	2/28/08	2/28/08
MATERIAL		N/A			
PART NAME		CLAW DUPLEX VACUUM FLOW SCHEMATIC		SIZE	
				D	
		CVTD0303		CVTD0303B.dwg	

8 7 6 5 4 3 2 1

REV	ZONE	REVISION	DATE	ECN	NAME	CHKD
J-1	ALL	ADDED PBM SHEETS	12/19/11	22610	AEK	GES
K-1	2 BS 2 ALL	ADDED SIGHT GAUGE ADDED SOURCE VALVE INFORMATION	10/10/12	22723	AEK	DMS
L-1	ALL	MADE HIGH TEMP STANDARDS ON BASIC CONTROLS	7/7/14	PXEC0048	AEK	GES
M-1	1 ALL	UPDATED TO PUMP WITH NEMA RATED MOTOR	6/27/16	PXEC0149	AEK	GES



CENTER OF GRAVITY INFO:
 TOTAL WT - 1225 LBS.
 X(FRONT) - -7.57
 Y(RIGHT) - 19.79
 Z(HEIGHT) - 35.34

DENOTES CENTER OF GRAVITY

NOTE: SYSTEM DESIGNED IN COMPLIANCE WITH U.S. NFPA '99, LATEST EDITION.

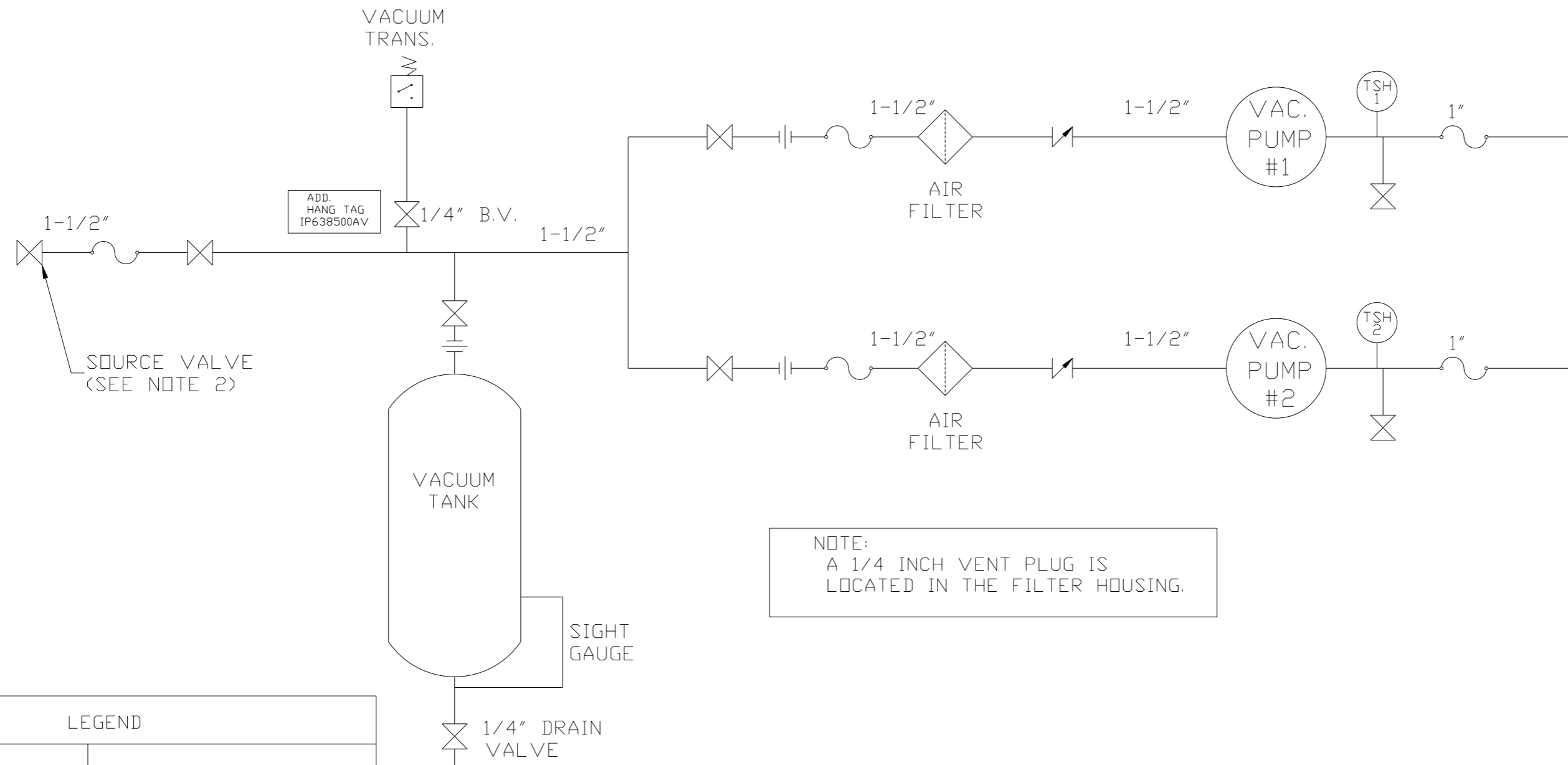
NOTE: A MINIMUM OF 24" CLEARANCE IS RECOMMENDED AROUND THE ENTIRE UNIT.

SYMBOL LEGEND ⊖ = MINUS DRAFT ⊕ = PLUS DRAFT TOLERANCES NOT SPECIFIED .XX ± .XXX ± <<DEG> ±		= ADDITIONAL CONTROL REQ'D = BRINELL HARDNESS		Drawings to conform to the current revision of the following ANSI standards: Y14.3 Multi and sectional view dgs. Y14.5M Dimensioning and tolerancing	
AUTOCAD REL2008 LT INCH		DO NOT SCALE DRAWING FOR DIMENSIONS Sheet 1 of 2 SCALE 1:10		CONFIDENTIAL DISCLOSURE This drawing is the property of POWEREX, INC. of the SCOTT FETZER COMPANY and subject to return on demand. Its contents are confidential and must not be copied or submitted to outside parties for use or examination.	
DRAWN BY AEK		CHECKED BY GES		APPROVED BY ENGINEERING MFG/MKTG DMS RJR	
MATERIAL N/A		DATE 12/19/11		DATE 12/19/11	
PART NAME 3HP CLAW VAC 80G DUPLEX		DATE 12/19/11		DATE 12/19/11	
DWG NO CVTD0303		DATE 12/19/11		DATE 12/19/11	
SIZE D		DATE 12/19/11		DATE 12/19/11	

8 7 6 5 4 3 2 1

CVTD0303B.dwg

REV	ZONE	REVISION	DATE	ECN	NAME	CHKD
J-1	ALL	ADDED PBM1 SHEETS	12/19/11	22610	AEK	GES
K-1	2 BS 2 ALL	ADDED SIGHT GAUGE ADDED SOURCE VALVE INFORMATION	10/10/12	22723	AEK	DMS
L-1	ALL	MADE HIGH TEMP STANDARDS ON BASIC CONTROLS	7/7/14	PXEC0048	AEK	GES
M-1	1 ALL	UPDATED TO PUMP WITH NEMA RATED MOTOR	6/27/16	PXEC0149	AEK	GES



NOTE:
A 1/4 INCH VENT PLUG IS
LOCATED IN THE FILTER HOUSING.

LEGEND	
	TEMP. SWITCH
	AIR FILTER
	BALL VALVE
	VACUUM SWITCH
	CHECK VALVE
	FLEX LINE
	UNION

NOTES:
1) TSH - TEMPERATURE SWITCH HIGH
2) PER NFPA THE SYSTEM WILL REQUIRE A SOURCE VALVE (SUPPLIED BY OTHERS).

SYMBOL LEGEND			ADDITIONAL CONTROL REQ'D	Drawings to conform to the current revision of the following ANSI standards
	MINUS DRAFT		BRINELL HARDNESS	Y14.3 Multi and sectional view dgs. Y14.5M Dimensioning and tolerancing
TOLERANCES NOT SPECIFIED		AUTOCAD REL2008 LT		DO NOT SCALE DRAWING FOR DIMENSIONS
.XX ±	.XXX ±	INCH		SCALE 1:10
CONFIDENTIAL DISCLOSURE This drawing is the property of POWEREX, INC. or the SCOTT FETZER COMPANY and subject to return on demand. Its contents are confidential and must not be copied or submitted to outside parties for use or examination.		DRAWN BY	CHECKED BY	APPROVED BY
		AEK	GES	DMS RJR
MATERIAL		12/19/11	12/19/11	12/19/11
N/A		Sheet 2 of 2		
PART NAME		CLAW DUPLEX VACUUM FLOW SCHEMATIC		
CVTDO303		SIZE D		