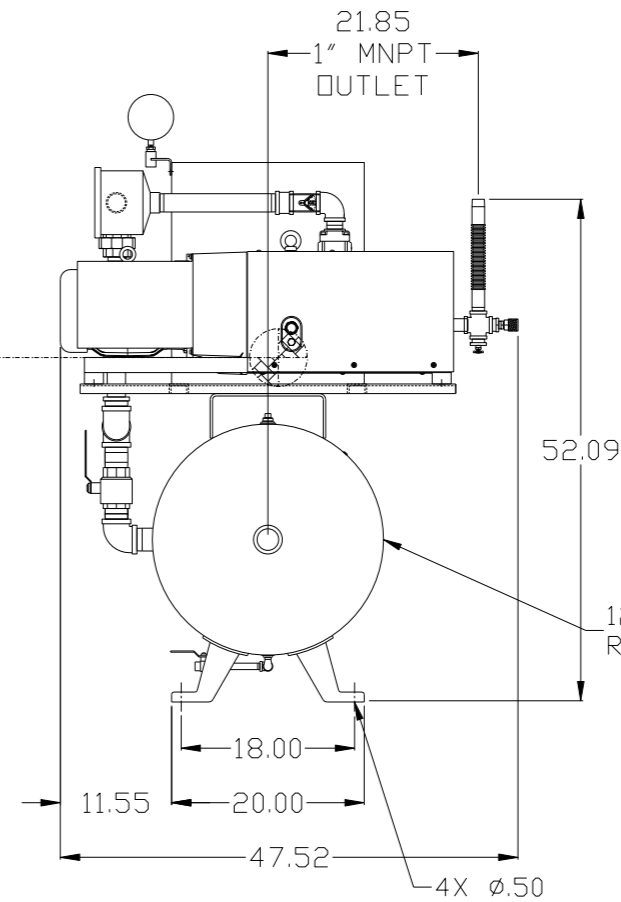
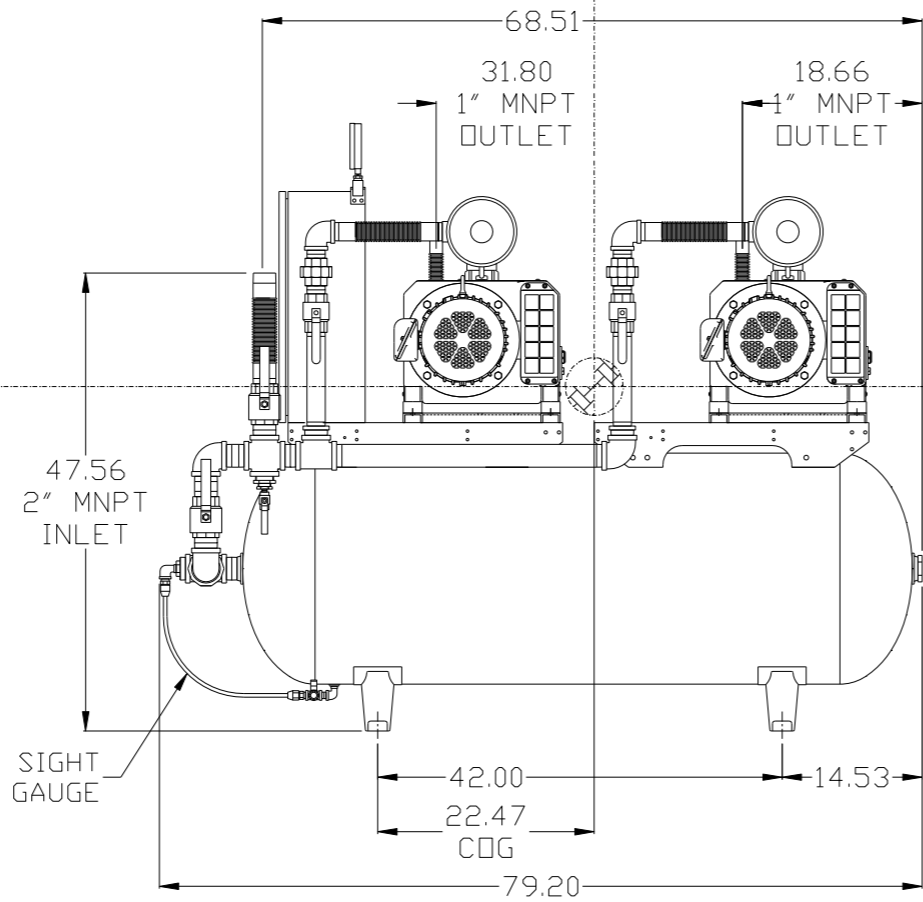
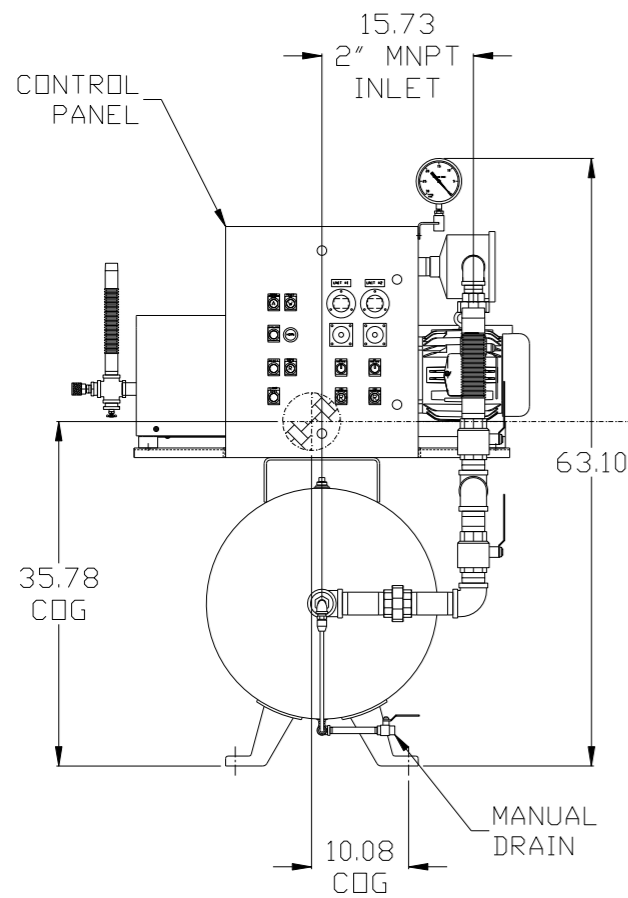
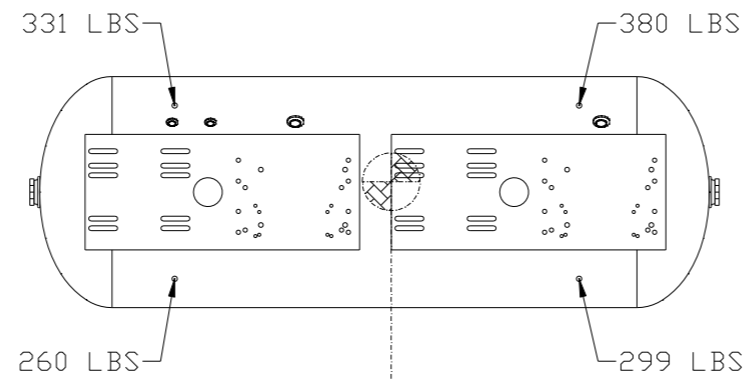


REV	ZONE	REVISION	DATE	ECN	NAME	CHKD
B-1	ALL	RELEASE TO PRODUCTION	6/27/08	21906	AEK	GES
C-1	ALL	UPDATED BUILD & FLOW TO CURRENT STANDARDS	10/8/08	21907	AEK	GES
D-1	1 ALL	ADJUSTED INLET LOCATION	1/9/09	22127	AEK	DMS
D-2	1 ALL	ADJUSTED INLET LOCATION PER NEC	9/11/09	22127	AEK	GES
E-1	1 ALL	RELOCATED PANEL & INLET PLUMBING	10/1/09	22303	AEK	GES
F-1	1 ALL	REMOVED VACUUM SWITCHES FROM CONTROL PANEL	11/10/09	22127	AEK	GES
G-1	2 B2,C2	ADDED DRIP LEG	3/16/10	22348	AEK	DMS
H-1	ALL	ADDED P&ID SHEETS	12/19/11	22610	AEK	GES
J-1	ALL	ADDED TANK SIGHT GAUGE	9/26/12	PXEC0019	AEK	DMS
J-2	ALL	ADDED SOURCE VALVE INFORMATION				
K-1	ALL	CHANGED HIGH TEMP TO STANDARD OPTION FOR BASIC CONTROLS	7/18/13	PXEC0048	AEK	GES
L-1	1 ALL	ADDED CDG INFORMATION	8/21/14	PXEC0067	AEK	GES
M-1	1 ALL	UPDATED TO PUMP WITH NEMA RATED MOTOR	7/12/16	PXEC0149	AEK	GES



120GAL ASME RECEIVER
 COG INFO:
 TOTAL WT - 1270 LBS.
 X(FRONT) - -10.08
 Y(RIGHT) - 22.47
 Z(HEIGHT) - 35.78

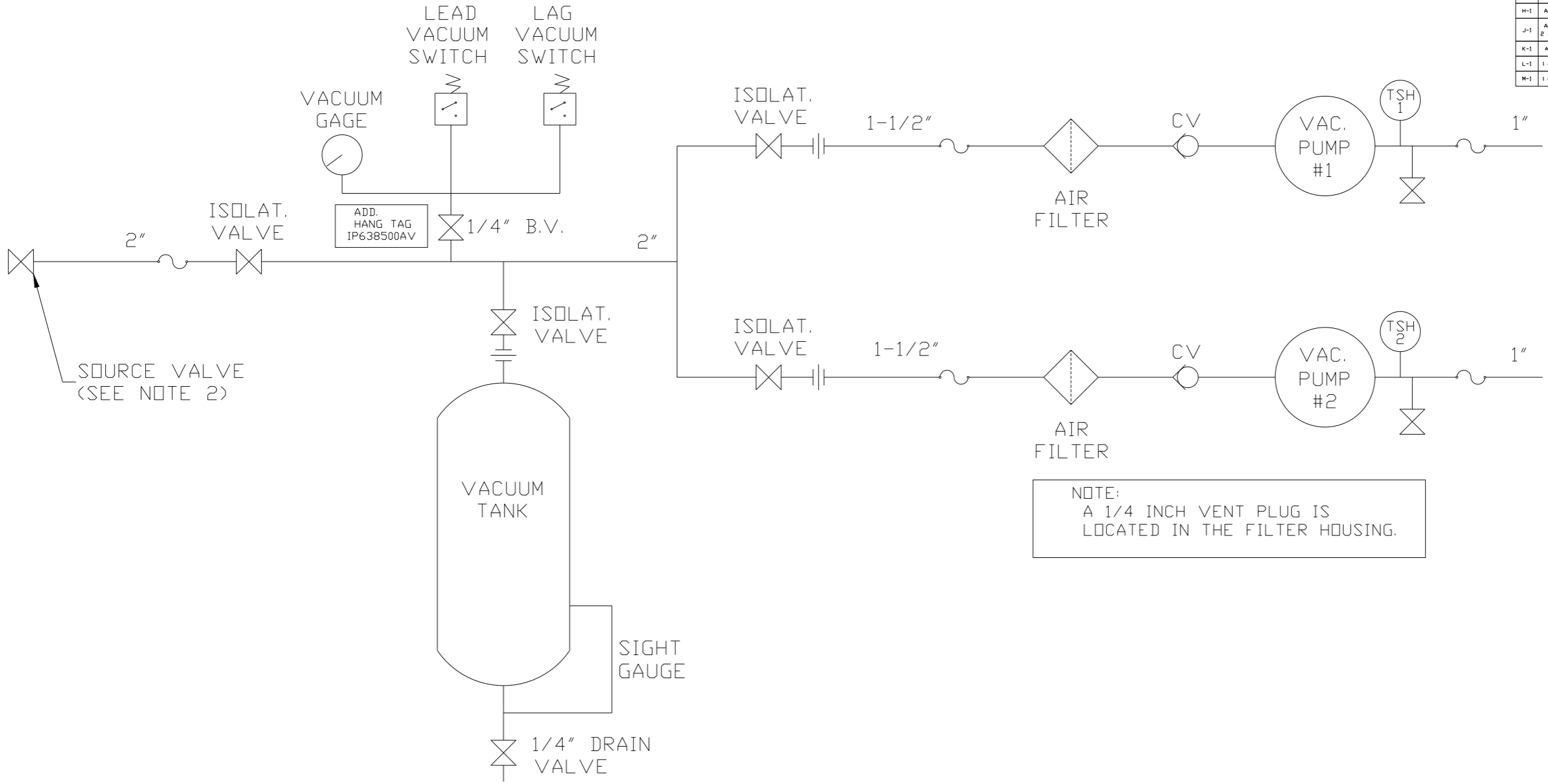
DENOTES CENTER OF GRAVITY

SYMBOL LEGEND ⊖ = MINUS DRAFT ⊕ = PLUS DRAFT		⊕ = ADDITIONAL CONTROL REQ'D HRC = BRINELL HARDNESS		Drawings to conform to the current revision of the following ANSI standards: Y14.3 Multi and sectional view dgs. Y14.5M Dimensioning and tolerancing	
TOLERANCES NOT SPECIFIED .XX ± .XXX ± \angle(DEG) ±		AUTOCAD REL2008 LT INCH		DO NOT SCALE DRAWING FOR DIMENSIONS Sheet 1 of 2 SCALE 1:10	
CONFIDENTIAL DISCLOSURE This drawing is the property of POWEREX, INC. of the SCOTT FETZER COMPANY and subject to return on demand. Its contents are confidential and must not be copied or submitted to outside parties for use or examination.					
DRAWN BY AEK		CHECKED BY GES		APPROVED BY ENGINEERING MFG/MKTG DMS RJR	
DATE 6/27/08		DATE 6/27/08		DATE 6/27/08	
MATERIAL N/A		 150 PRODUCTION DRIVE, HARRISON, OHIO 45030 Ph: 888-769-7979 FAX: (513) 367-3125			
PART NAME 5HP CLAW VAC 120G DUPLEX		DWG NO CVTD0504A		SIZE D	

NOTE: A MINIMUM OF 24" CLEARANCE IS RECOMMENDED AROUND THE ENTIRE UNIT.

NOTE: SYSTEM DESIGNED IN COMPLIANCE WITH U.S. NFPA '99, LATEST EDITION.

REV	ZONE	REVISION	DATE	ECN	NAME	CHKD
B-1	ALL	RELEASE TO PRODUCTION	6/27/08	21906	AEK	GES
C-1	ALL	UPDATED BUILD & FLOW TO CURRENT STANDARDS	10/8/08	21907	AEK	GES
D-1	1 ALL	ADJUSTED INLET LOCATION	1/9/09	22127	AEK	DMS
D-2	1 ALL	ADJUSTED INLET LOCATION PER NEC	9/11/09	22127	AEK	GES
E-1	1 ALL	RELOCATED PANEL & INLET PLUMBING	10/1/09	22303	AEK	GES
F-1	1 ALL	REMOVED VACUUM SWITCHES FROM CONTROL PANEL	11/10/09	22127	AEK	GES
G-1	2 BRG	ADDED DRIP LEG	3/16/10	22348	AEK	DMS
H-1	ALL	ADDED P&ID SHEETS	12/19/11	22610	AEK	GES
J-1	ALL 2 ALL	ADDED TANK SIGHT GAUGE ADDED SOURCE VALVE INFORMATION	9/26/12	PXEC0019	AEK	DMS
K-1	ALL	CHANGED HIGH TEMP TO STANDARD OPTION FOR BASIC CONTROLS	7/18/13	PXEC0048	AEK	GES
L-1	1 ALL	ADDED CDG INFORMATION	8/21/14	PXEC0067	AEK	GES
M-1	1 ALL	UPDATED TO PUMP WITH NEMA RATED MOTOR	7/12/16	PXEC0149	AEK	GES



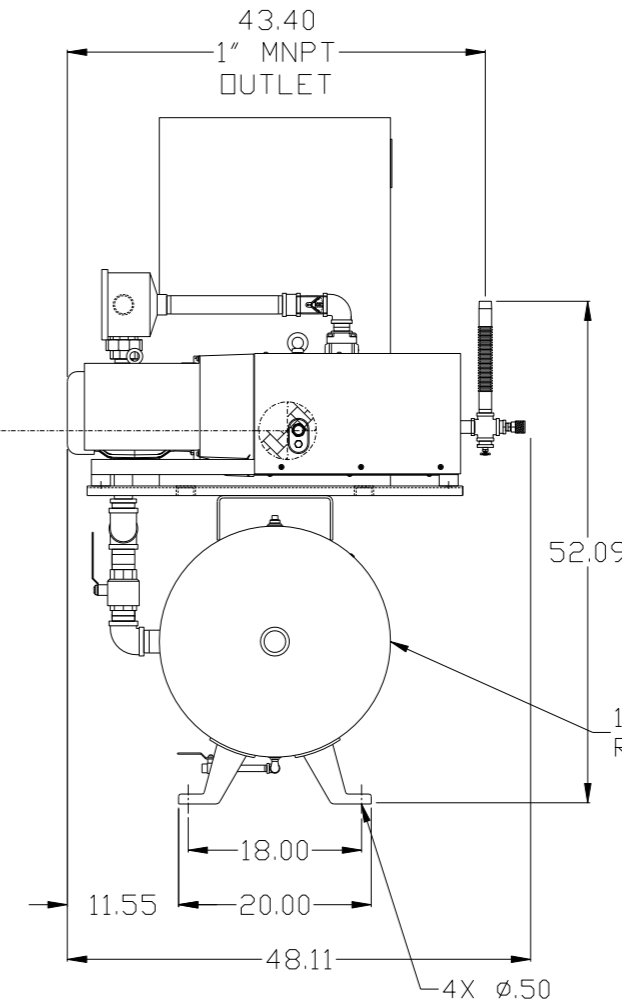
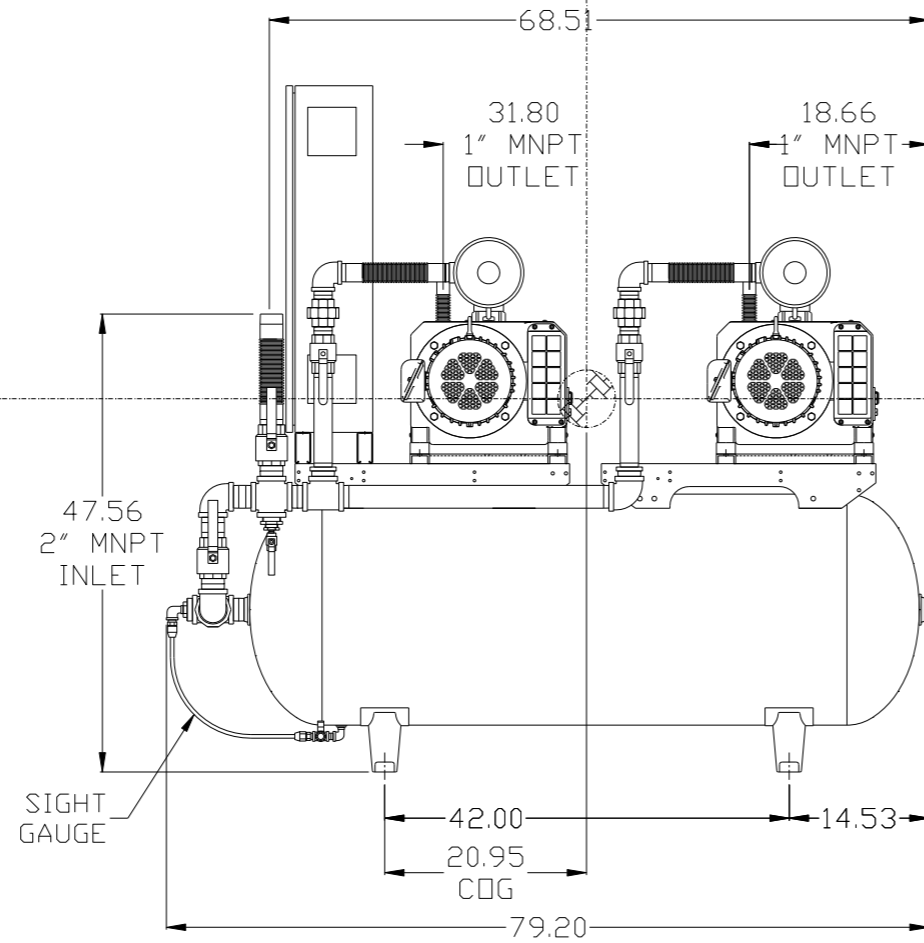
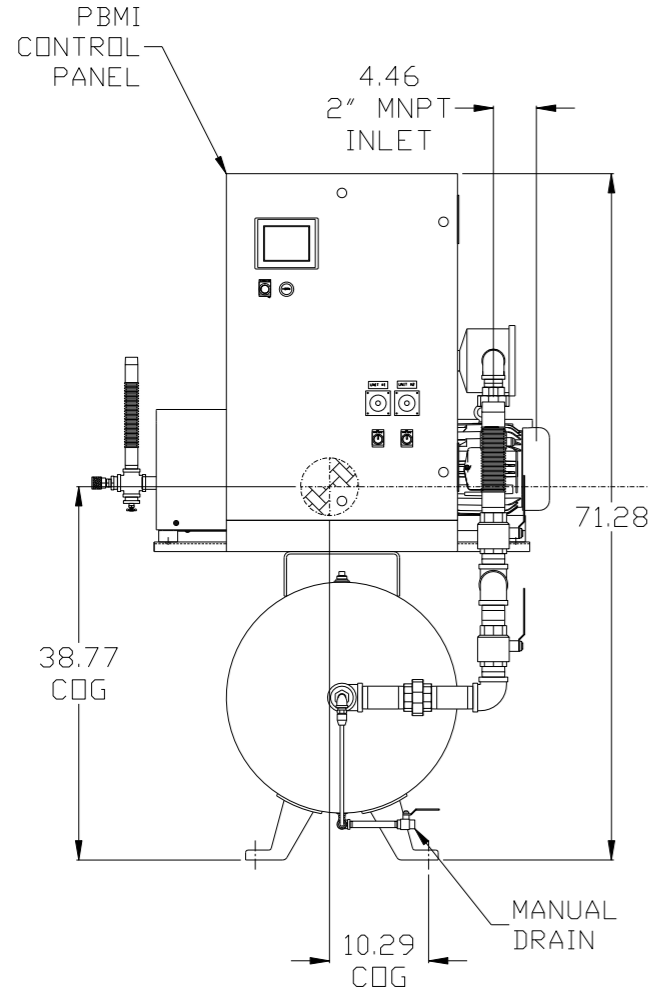
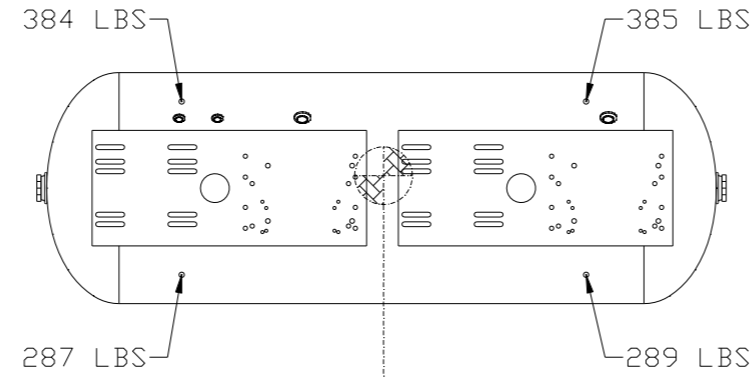
NOTE:
A 1/4 INCH VENT PLUG IS
LOCATED IN THE FILTER HOUSING.

LEGEND	
	BALL VALVE
	VACUUM SWITCH
	INTAKE FILTER
	CHECK VALVE
	UNION
	FLEX LINE

NOTES:
1) TSH - TEMPERATURE SWITCH HIGH
2) PER NFPA THE SYSTEM WILL REQUIRE A SOURCE VALVE (SUPPLIED BY OTHERS).

SYMBOL LEGEND			ADDITIONAL CONTROL REQ'D	Drawings to conform to the current revision of the following ANSI standards	
	MINUS DRAFT		BRINELL HARDNESS	Y14.3 Multi and sectional view dsgs. Y14.5M Dimensioning and tolerancing	
TOLERANCES NOT SPECIFIED		AUTOCAD REL2008 LT	DO NOT SCALE DRAWING FOR DIMENSIONS		
.XX ±	.XXX ±	INCH	Sheet 2 of 2	SCALE 1:10	
CONFIDENTIAL DISCLOSURE This drawing is the property of POWEREX, INC. of the SCOTT FETZER COMPANY and subject to return on demand. Its contents are confidential and must not be copied or submitted to outside parties for use or examination.					
DRAWN BY	CHECKED BY	APPROVED BY	ENGINEERING	MFG/MRKTG	
AEK	GES	DMS	RJR		
6/27/08	6/27/08	6/27/08	6/27/08	6/27/08	6/27/08
MATERIAL		N/A			
PART NAME		CLAW DUPLEX VACUUM FLOW SCHEMATIC			
DWG NO		CVTD0504A		SIZE D	

REV	ZONE	REVISION	DATE	ECN	NAME	CHKD
H-1	ALL	ADDED PBMI SHEETS	12/19/11	22610	AEK	GES
J-1	ALL	ADDED TANK SIGHT GAUGE	9/26/12	PXEC0019	AEK	DMS
K-1	ALL	ADDED SOURCE VALVE INFORMATION	7/18/13	PXEC0048	AEK	GES
L-1	1 ALL	CHANGED HIGH TEMP TO STANDARD OPTION FOR BASIC CONTROLS	8/21/14	PXEC0067	AEK	GES
M-1	1 ALL	ADDED COG INFORMATION	7/12/16	PXEC0149	AEK	GES
M-1	1 ALL	UPDATED TO PUMP WITH NEMA RATED MOTOR				



120GAL ASME RECEIVER

COG INFO:
TOTAL WT - 1401 LBS.
X(FRONT) - -10.34
Y(RIGHT) - 21.19
Z(HEIGHT) - 38.86

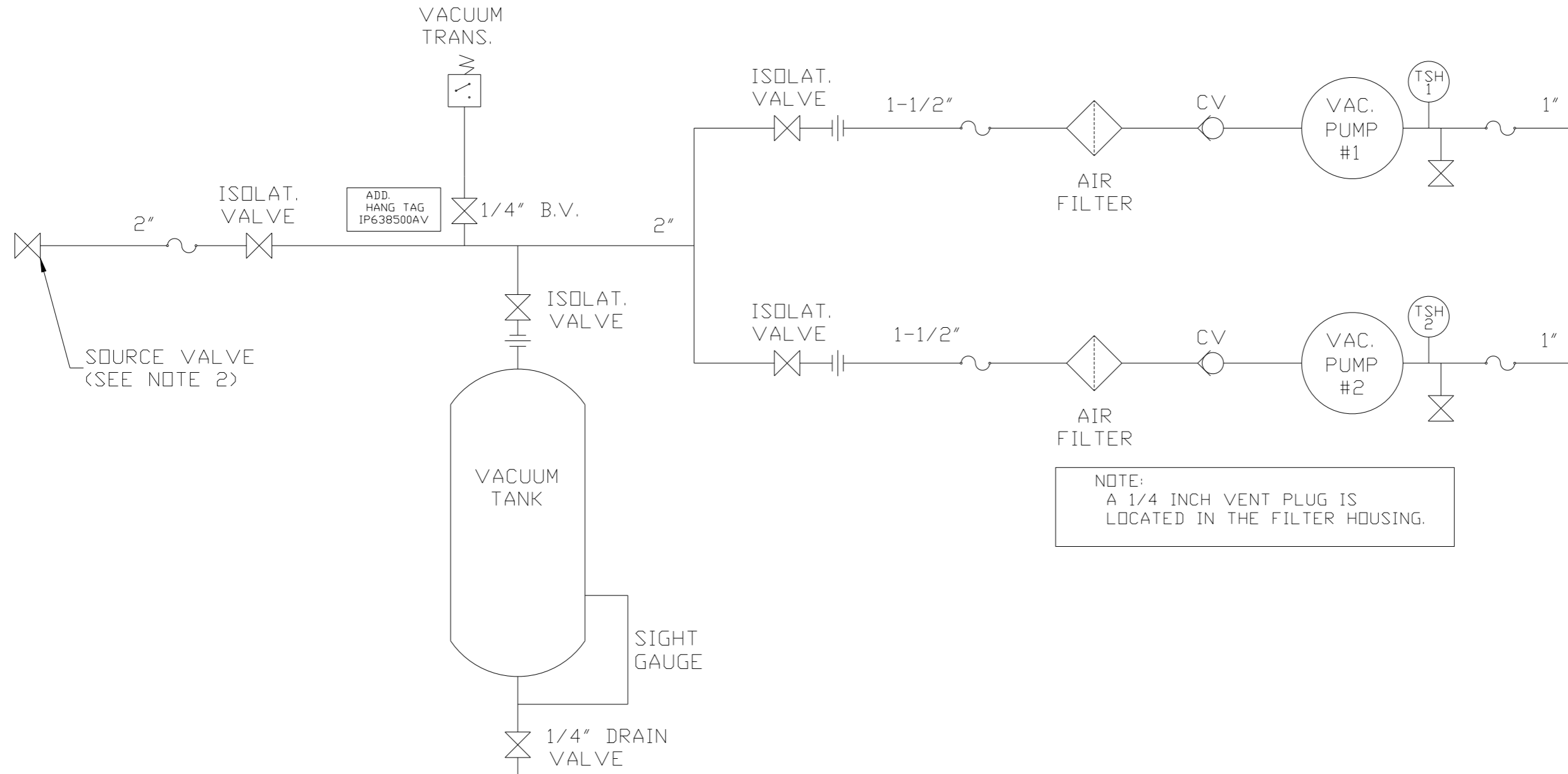
DENOTES CENTER OF GRAVITY

NOTE: A MINIMUM OF 24" CLEARANCE IS RECOMMENDED AROUND THE ENTIRE UNIT.

NOTE: SYSTEM DESIGNED IN COMPLIANCE WITH U.S. NFPA '99, LATEST EDITION.

SYMBOL LEGEND ⊖ = MINUS DRAFT ⊕ = PLUS DRAFT TOLERANCES NOT SPECIFIED .XX ± .XXX ± << DEG >> ±		⊕ = ADDITIONAL CONTROL REQ'D ⊕ = BRINELL HARDNESS AUTOCAD REL2008 LT INCH DO NOT SCALE DRAWING FOR DIMENSIONS Sheet 1 of 2 SCALE 1:10		Drawings to conform to the current revision of the following ANSI standards: Y14.3 Multi and sectional view dgs. Y14.5M Dimensioning and tolerancing	
CONFIDENTIAL DISCLOSURE This drawing is the property of POWEREX, INC. of the SCOTT FETZER COMPANY and subject to return on demand. Its contents are confidential and must not be copied or submitted to outside parties for use or examination.		DRAWN BY AEK	CHECKED BY GES	APPROVED BY ENGINEERING DMS	APPROVED BY MFG/MKTG RJR
MATERIAL N/A		PART NAME 5HP CLAW VAC 120G DUPLEX		POWEREX 150 PRODUCTION DRIVE, HARRISON, OHIO 45030 Ph: 888-769-7979 FAX: (513) 367-3125	
DWG NO CVTD0504A				SIZE D	

REV	ZONE	REVISION	DATE	ECN	NAME	CHKD
H-1	ALL	ADDED P&MI SHEETS	12/19/11	22610	AEK	GES
J-1	ALL	ADDED TANK SIGHT GAUGE	9/26/12	PXEC0019	AEK	DMS
K-1	ALL	ADDED SOURCE VALVE INFORMATION				
L-1	ALL	CHANGED HIGH TEMP TO STANDARD OPTION FOR BASIC CONTROLS	7/18/13	PXEC0048	AEK	GES
M-1	ALL	ADDED CDG INFORMATION	8/21/14	PXEC0067	AEK	GES
N-1	ALL	UPDATED TO PUMP WITH NEMA RATED MOTOR	7/12/16	PXEC0149	AEK	GES



NOTE:
A 1/4 INCH VENT PLUG IS
LOCATED IN THE FILTER HOUSING.

LEGEND	
	BALL VALVE
	VACUUM SWITCH
	INTAKE FILTER
	CHECK VALVE
	UNION
	FLEX LINE

NOTES:
1) TSH - TEMPERATURE SWITCH HIGH
2) PER NFPA THE SYSTEM WILL REQUIRE A SOURCE VALVE (SUPPLIED BY OTHERS).

SYMBOL LEGEND			ADDITIONAL CONTROL REQ'D	Drawings to conform to the current revision of the following ANSI standards	
	MINUS DRAFT		BRINELL HARDNESS	Y14.3 Multi and sectional view dsgs. Y14.5M Dimensioning and tolerancing	
TOLERANCES NOT SPECIFIED		AUTOCAD REL2008 LT	DO NOT SCALE DRAWING FOR DIMENSIONS		
.XX ±	.XXX ±	INCH	Sheet 2 of 2	SCALE 1:10	
CONFIDENTIAL DISCLOSURE This drawing is the property of POWEREX, INC. OF THE SCOTT FETZER COMPANY and subject to return on demand. Its contents are confidential and must not be copied or submitted to outside parties for use or examination.					
DRAWN BY	CHECKED BY	APPROVED BY	MFG/MKTG		
AEK	GES	DMS	RJR		
12/19/11	12/19/11	12/19/11	12/19/11		
MATERIAL		N/A			
PART NAME		CLAW DUPLEX VACUUM FLOW SCHEMATIC			
DWG NO		CVTD0504A		SIZE D	