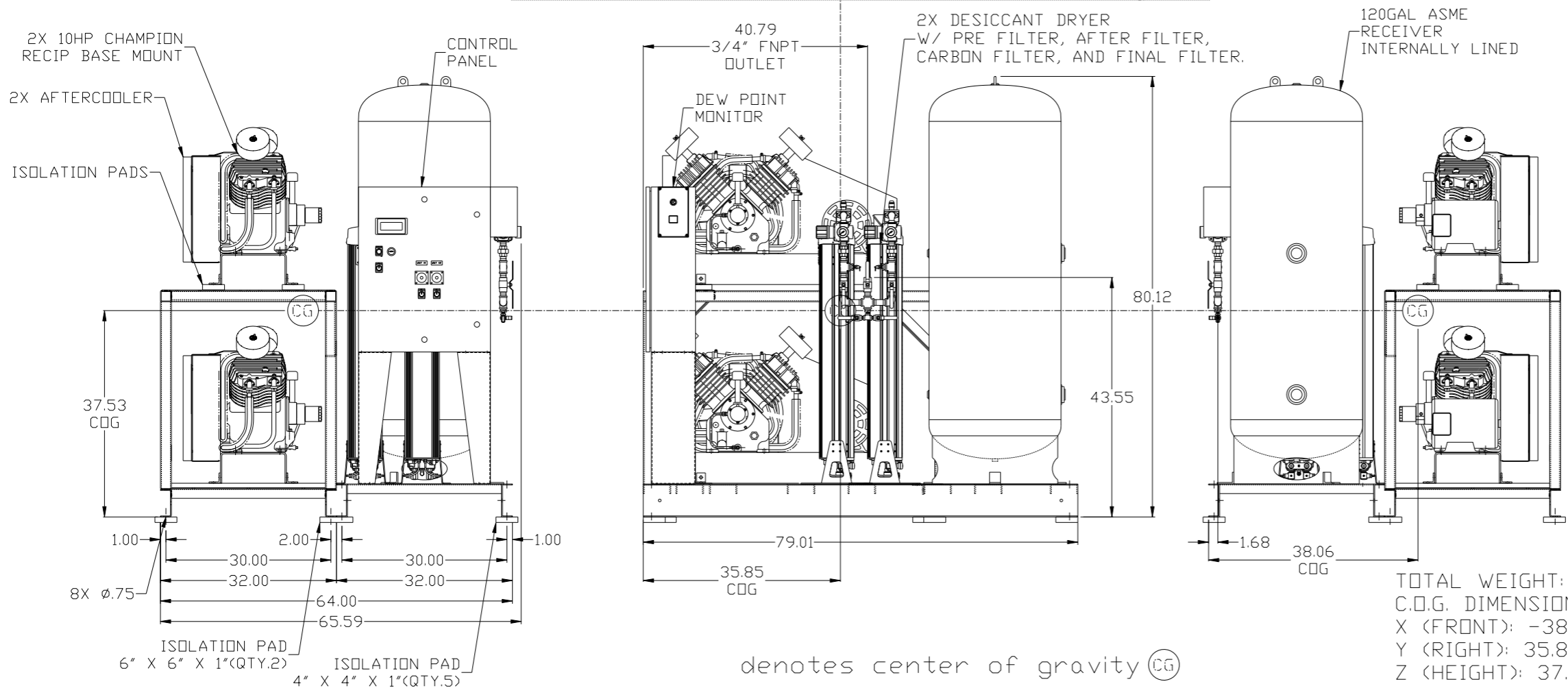
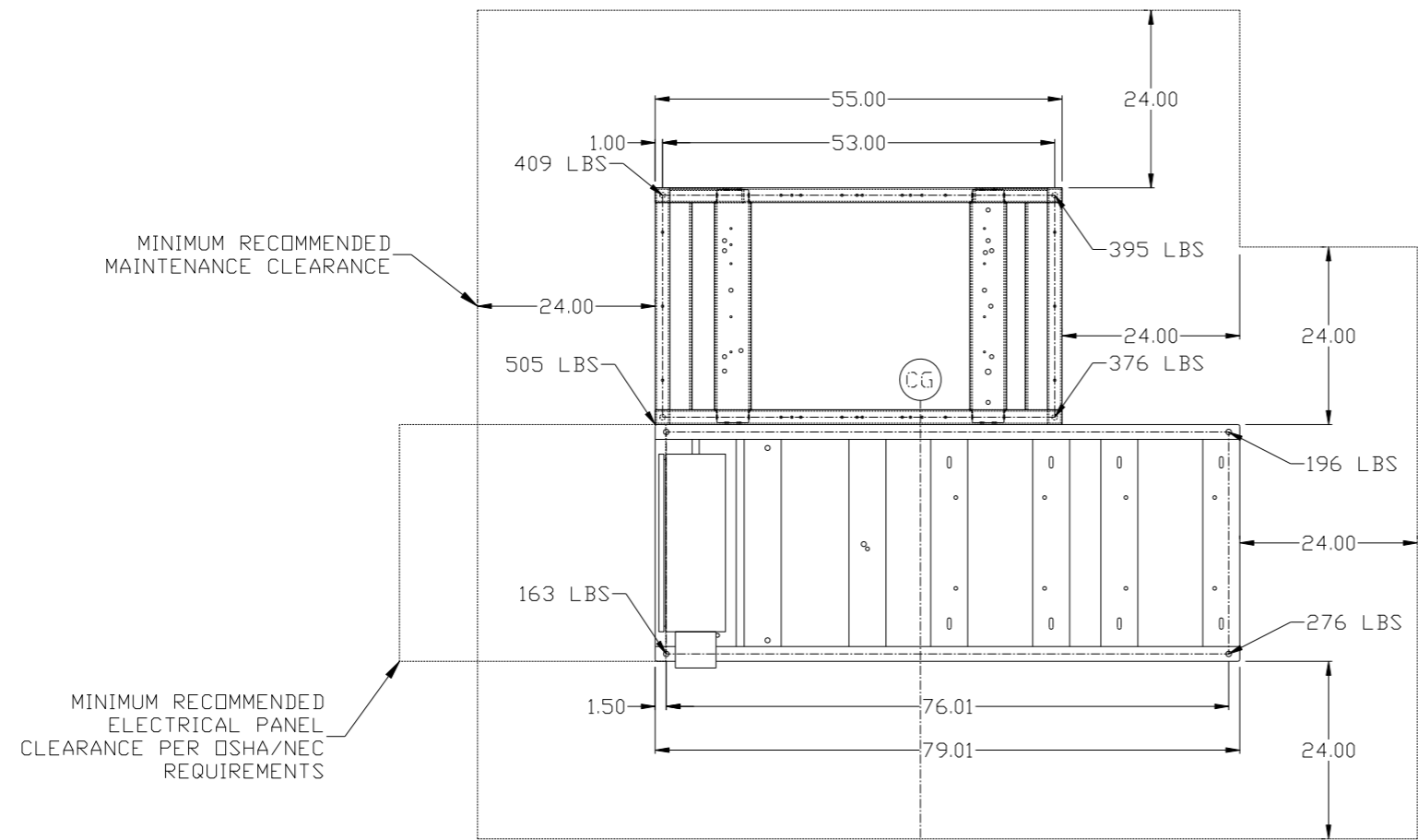


REV	ZONE	REVISION	DATE	ECN	NAME	CHKD
B-1	ALL	RELEASE TO PRODUCTION	9/23/10	22470	GES	DMS
B-2	1 ALL	STAGGERED DRYERS PER PRODUCTION	10/27/10	22470	AEK	GES
B-3	2C-7	ADDED UNLOADER LINES TO PUMPS	11/4/10	22470	AEK	GES
B-4	1 ALL	REMOVED REGULATOR FROM DP MONITOR LINE	11/29/10	22470	AEK	GES
B-5	2 A6	ADDED DRAIN OIL SEPARATOR NOTE	12/3/10	22470	AEK	GES
B-6	2 D3	CORRECTED GAUGE CALLOUT	2/15/11	22470	AEK	GES
C-1	ALL	ADDED FINAL FILTER	3/11/11	22573	AEK	GES
D-1	1 ALL	MOVED CONTROL PANEL TO ATC SKID	4/21/11	22594	AEK	GES
E-1	2, C6	CHANGED CV POSITION, ADDED BLEED VALVE	5/12/11	22546	GES	DMS
F-1	1 ALL	REPLACED SPRING ISO MOUNTS W/ ISO PADS	4/5/12	22470	AEK	GES
G-1	ALL	ADDED SHEET 3 ADDED CENTER OF GRAVITY INFORMATION	6/15/12	22723	AEK	GES
H-1	2 ALL 2 D5	ADDED SEPARATOR E-DRAINS ADDED FLEX LINES ADDED SNUBBER VALVE	3/12/13	PXEC0030	AEK	GES
J-1	2 C4 3 B6-B	CHANGED FLEX LINES TO 3/4" REMOVED SPRING ISOLATORS	10/27/15	PXEC0093	MJD	GES
K-1	2 D5	REMOVED SNUBBER VALVE	5/2/17	PXEC0187	MJD	KMB
L-1	1 ALL	UPDATED TO NAND DRYERS	8/10/17	PXEC0174	AEK	GES

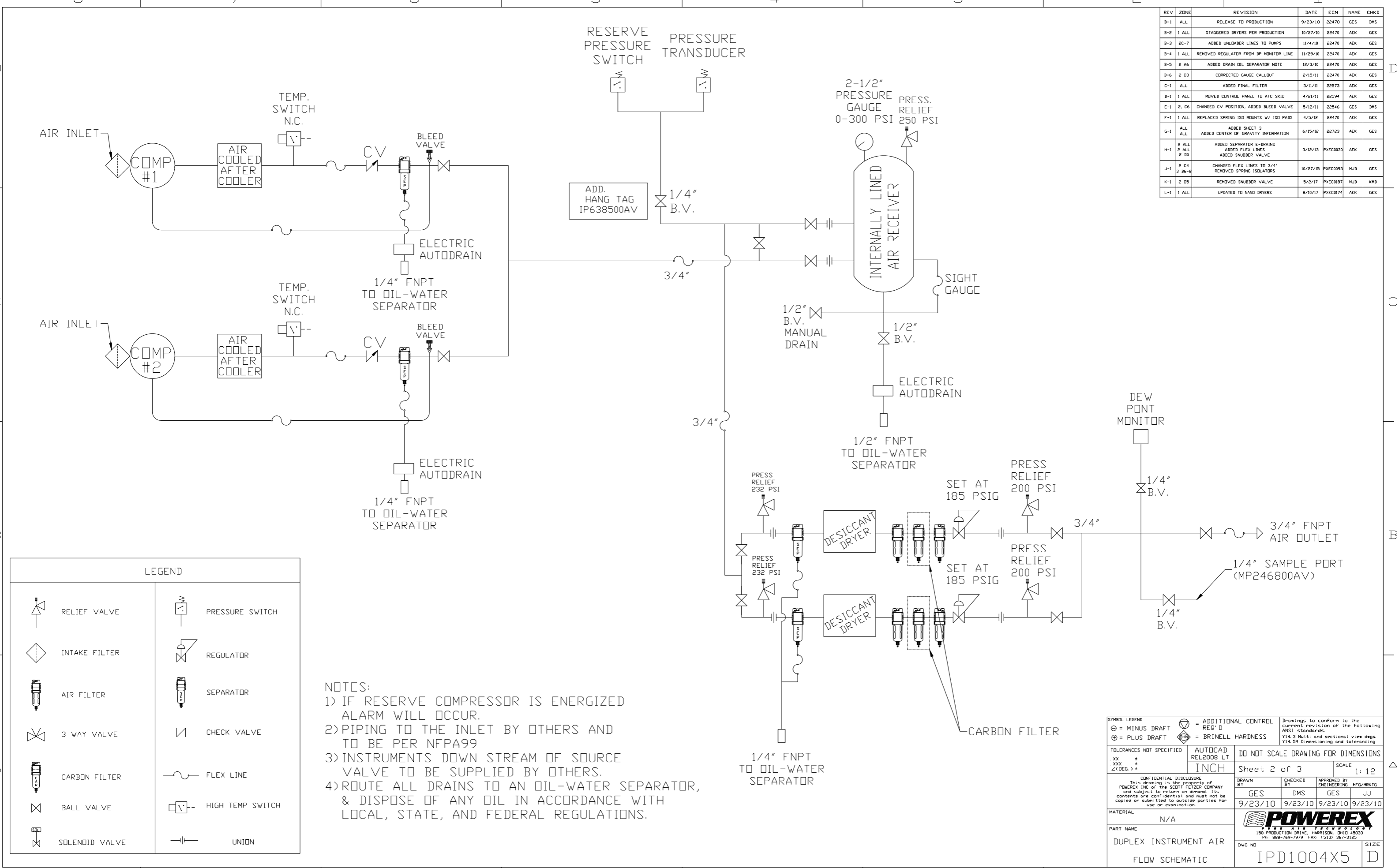


NOTE: SYSTEM DESIGNED IN COMPLIANCE WITH U.S. NFPA '99, LATEST EDITION.

<b>SYMBOL LEGEND</b> ⊖ = MINUS DRAFT ⊕ = PLUS DRAFT ⊕ = BRINELL HARDNESS		= ADDITIONAL CONTROL REQ'D = BRINELL HARDNESS		Drawings to conform to the current revision of the following ANSI standards: Y14.3 Multi and sectional view dgs. Y14.5M Dimensioning and tolerancing	
TOLERANCES NOT SPECIFIED .XX ± .XXX ± <math>\angle</math> (DEG) ±		AUTOCAD REL2008 LT INCH		DO NOT SCALE DRAWING FOR DIMENSIONS Sheet 1 of 3 SCALE 1:12	
<b>CONFIDENTIAL DISCLOSURE</b> This drawing is the property of POWEREX, INC. of the SCOTT FEITZER COMPANY and subject to return on demand. Its contents are confidential and must not be copied or submitted to outside parties for use or examination.					
DRAWN BY GES		CHECKED BY DMS		APPROVED BY ENGINEERING MFG/MKTG GES JJ	
MATERIAL N/A		DATE 9/23/10		DATE 9/23/10	
PART NAME 10HP INSTRUMENT AIR DUPLEX		DVG NO 120GAL DESICCANT		SIZE IPD1004X5	

TOTAL WEIGHT: 2320 LBS  
 C.O.G. DIMENSIONS  
 X (FRONT): -38.06"  
 Y (RIGHT): 35.85"  
 Z (HEIGHT): 37.53"

REV	ZONE	REVISION	DATE	ECN	NAME	CHKD
B-1	ALL	RELEASE TO PRODUCTION	9/23/10	22470	GES	DMS
B-2	1 ALL	STAGGERED DRYERS PER PRODUCTION	10/27/10	22470	AEK	GES
B-3	2C-7	ADDED UNLADDER LINES TO PUMPS	11/4/10	22470	AEK	GES
B-4	1 ALL	REMOVED REGULATOR FROM DP MONITOR LINE	11/29/10	22470	AEK	GES
B-5	2 A6	ADDED DRAIN OIL SEPARATOR NOTE	12/3/10	22470	AEK	GES
B-6	2 D3	CORRECTED GAUGE CALLOUT	2/15/11	22470	AEK	GES
C-1	ALL	ADDED FINAL FILTER	3/11/11	22573	AEK	GES
D-1	1 ALL	MOVED CONTROL PANEL TO ATC SKID	4/21/11	22594	AEK	GES
E-1	2, C6	CHANGED CV POSITION, ADDED BLEED VALVE	5/12/11	22546	GES	DMS
F-1	1 ALL	REPLACED SPRING ISO MOUNTS w/ ISO PADS	4/5/12	22470	AEK	GES
G-1	ALL	ADDED SHEET 3 ADDED CENTER OF GRAVITY INFORMATION	6/15/12	22723	AEK	GES
H-1	2 ALL 2 D5	ADDED SEPARATOR E-DRAINS ADDED FLEX LINES ADDED SNUBBER VALVE	3/12/13	PXEC0030	AEK	GES
J-1	2 C4 3 B6-B	CHANGED FLEX LINES TO 3/4" REMOVED SPRING ISOLATORS	10/27/15	PXEC0093	MJD	GES
K-1	2 D5	REMOVED SNUBBER VALVE	5/2/17	PXEC0187	MJD	KMB
L-1	1 ALL	UPDATED TO HAND DRYERS	8/10/17	PXEC0174	AEK	GES

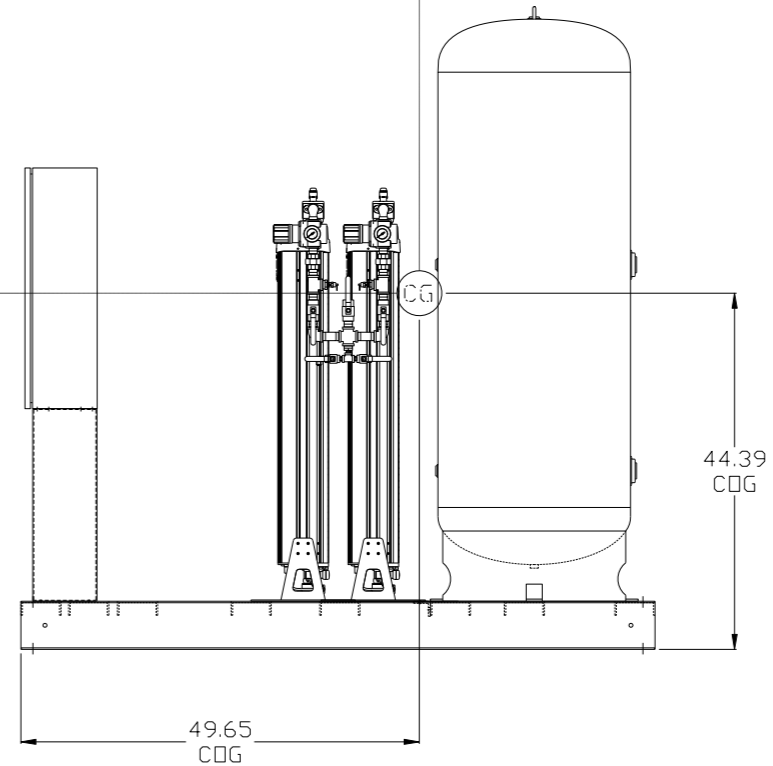
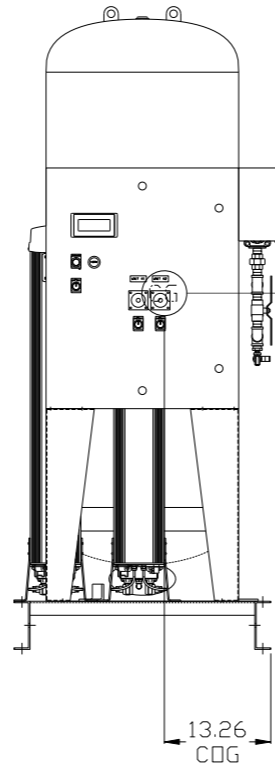
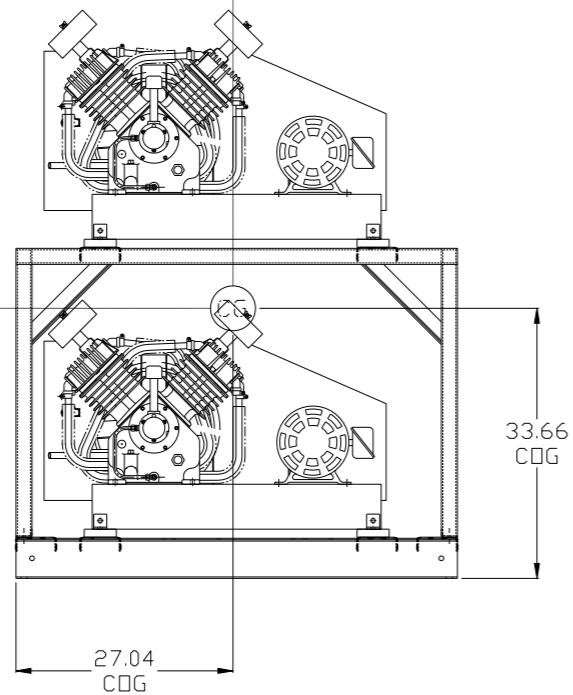
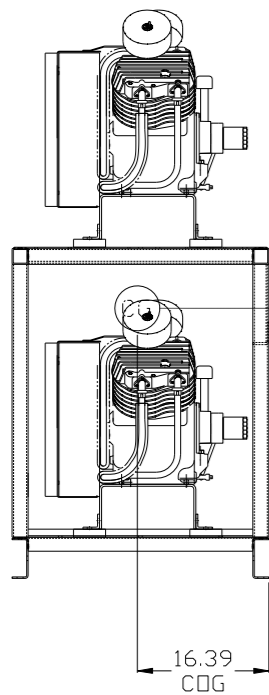
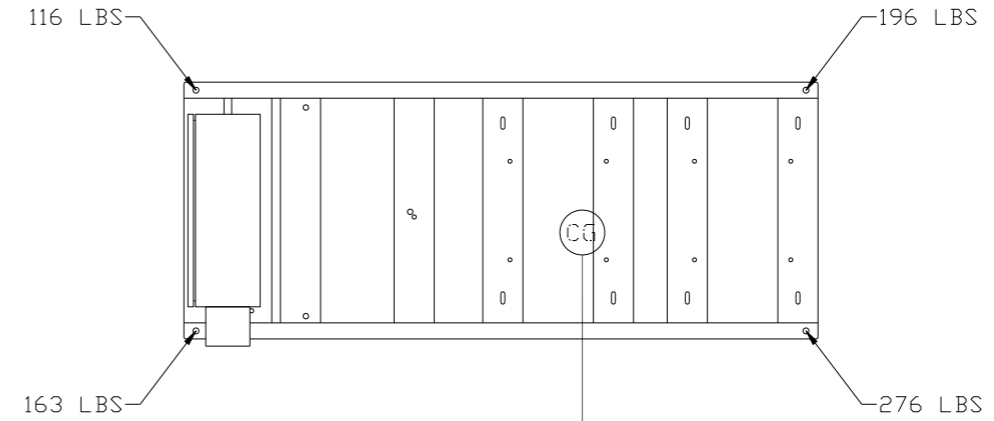
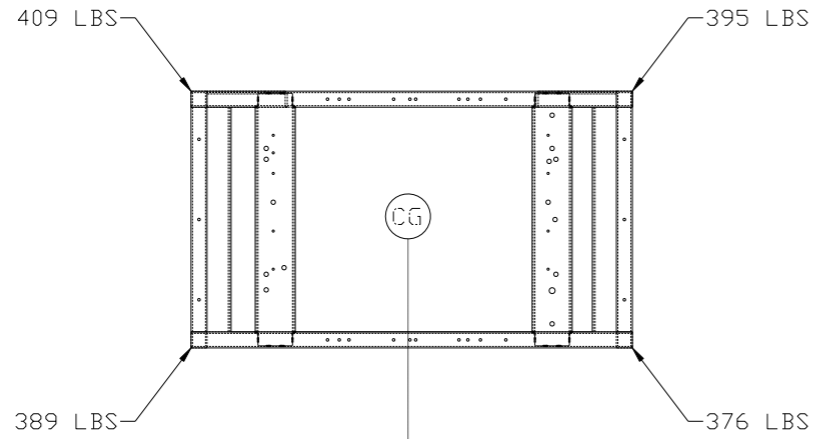


LEGEND	
	RELIEF VALVE
	INTAKE FILTER
	AIR FILTER
	3 WAY VALVE
	CARBON FILTER
	BALL VALVE
	SOLENOID VALVE
	PRESSURE SWITCH
	REGULATOR
	SEPARATOR
	CHECK VALVE
	FLEX LINE
	HIGH TEMP SWITCH
	UNION

NOTES:  
 1) IF RESERVE COMPRESSOR IS ENERGIZED ALARM WILL OCCUR.  
 2) PIPING TO THE INLET BY OTHERS AND TO BE PER NFPA99  
 3) INSTRUMENTS DOWN STREAM OF SOURCE VALVE TO BE SUPPLIED BY OTHERS.  
 4) ROUTE ALL DRAINS TO AN OIL-WATER SEPARATOR, & DISPOSE OF ANY OIL IN ACCORDANCE WITH LOCAL, STATE, AND FEDERAL REGULATIONS.

SYMBOL LEGEND			ADDITIONAL CONTROL REQ'D	Drawings to conform to the current revision of the following ANSI standards
	MINUS DRAFT		BRINELL HARDNESS	Y14.3 Multi and sectional view dsgs. Y14.5M Dimensioning and tolerancing
TOLERANCES NOT SPECIFIED		AUTOCAD REL2008 LT		DO NOT SCALE DRAWING FOR DIMENSIONS
.XX ±		INCH		Sheet 2 of 3
.XXX ±				SCALE 1:12
<<DEG> ±				
CONFIDENTIAL DISCLOSURE This drawing is the property of POWEREX, INC. of the SCOTT FEITZER COMPANY and subject to return on demand. Its contents are confidential and must not be copied or submitted to outside parties for use or examination.				
DRAWN BY		CHECKED BY	APPROVED BY	
GES		DMS	GES JJ	
9/23/10		9/23/10	9/23/10 9/23/10	
MATERIAL N/A				
PART NAME				
DUPLEX INSTRUMENT AIR				
FLOW SCHEMATIC				
DWG NO				SIZE
IPD1004X5				D

REV	ZONE	REVISION	DATE	ECN	NAME	CHKD
G-1	ALL	ADDED SHEET 3 ADDED CENTER OF GRAVITY INFORMATION	6/15/12	22723	AEK	GES
H-1	2 ALL 2 ALL 2 DS	ADDED SEPARATOR E-DRAINS ADDED FLEX LINES ADDED SNUBBER VALVE	3/12/13	PXEC0030	AEK	GES
J-1	2 C4 3 B6-B	CHANGED FLEX LINES TO 3/4" REMOVED SPRING ISOLATORS	10/27/15	PXEC0093	MJD	GES
K-1	2 D5	REMOVED SNUBBER VALVE	5/2/17	PXEC0187	MJD	KMB
L-1	1 ALL	UPDATED TO NANO DRYERS	8/10/17	PXEC0174	AEK	GES



**PUMP SKID:**

TOTAL WEIGHT: 1569 LBS  
 C.D.G. DIMENSIONS  
 X (FRONT): -16.39"  
 Y (RIGHT): 27.04"  
 Z (HEIGHT): 33.66"

**DRYER/TANK SKID:**

TOTAL WEIGHT: 751 LBS  
 C.D.G. DIMENSIONS  
 X (FRONT): -13.26"  
 Y (RIGHT): 49.65"  
 Z (HEIGHT): 44.39"

denotes center of gravity (CG)

<b>SYMBOL LEGEND</b> ⊖ = MINUS DRAFT ⊕ = PLUS DRAFT ⊕ = ADDITIONAL CONTROL REQ'D HRC = BRINELL HARDNESS		Drawings to conform to the current revision of the following ANSI standards: Y14.3 Multi and sectional view dsgs. Y14.5M Dimensioning and tolerancing	
TOLERANCES NOT SPECIFIED: .XX ± .XXX ± <math>\angle</math>(DEG) ±		AUTOCAD REL2008 LT INCH DO NOT SCALE DRAWING FOR DIMENSIONS Sheet 3 of 3 SCALE 1:12	
<b>CONFIDENTIAL DISCLOSURE</b> This drawing is the property of POWEREX, INC. of the SCOTT FETZER COMPANY and subject to return on demand. Its contents are confidential and must not be copied or submitted to outside parties for use or examination.			
DRAWN BY: AEK CHECKED BY: GES 6/15/12		APPROVED BY: ENGINEERING MFG/MKTG DMS JJ 6/15/12 6/15/12 6/15/12 6/15/12	
MATERIAL: N/A		 150 PRODUCTION DRIVE, HARRISON, OHIO 45030 Ph: 888-769-7979 FAX: (513) 367-3125	
PART NAME: 10HP INSTRUMENT AIR DUPLEX		DWG NO: IPD1004X5 SIZE: D	
120GAL DESICCANT		IPD1004X5.dwg	