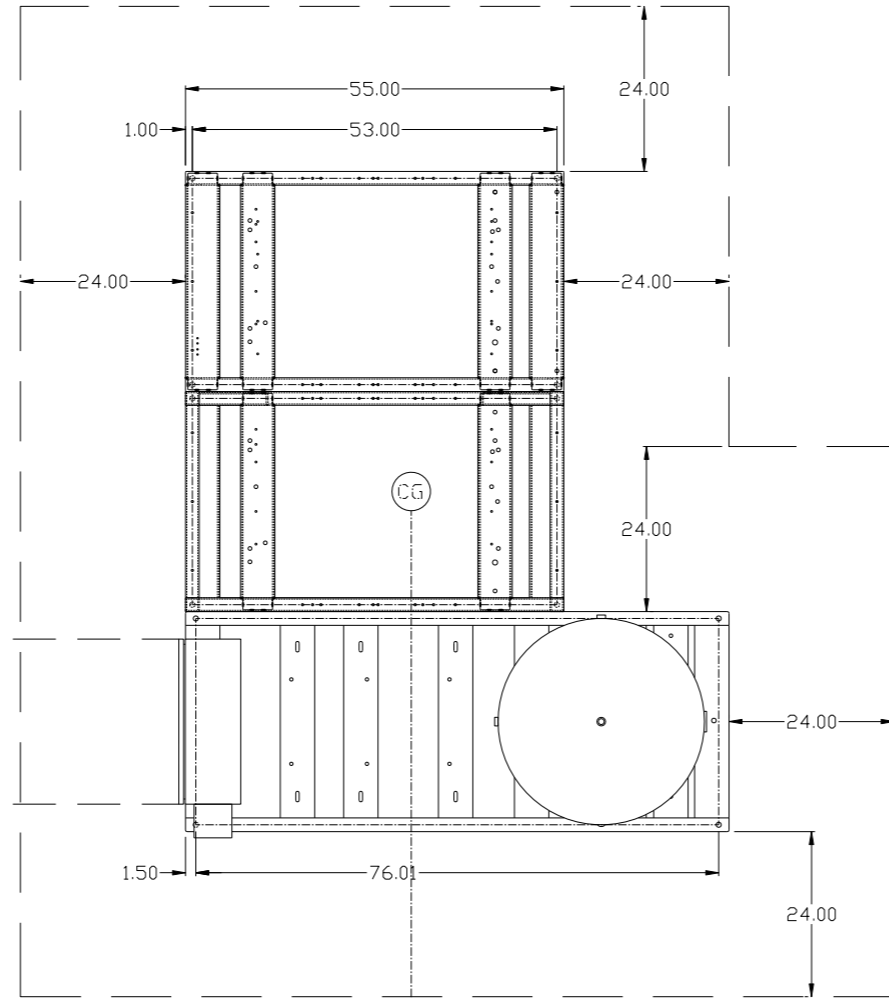


SYSTEM:

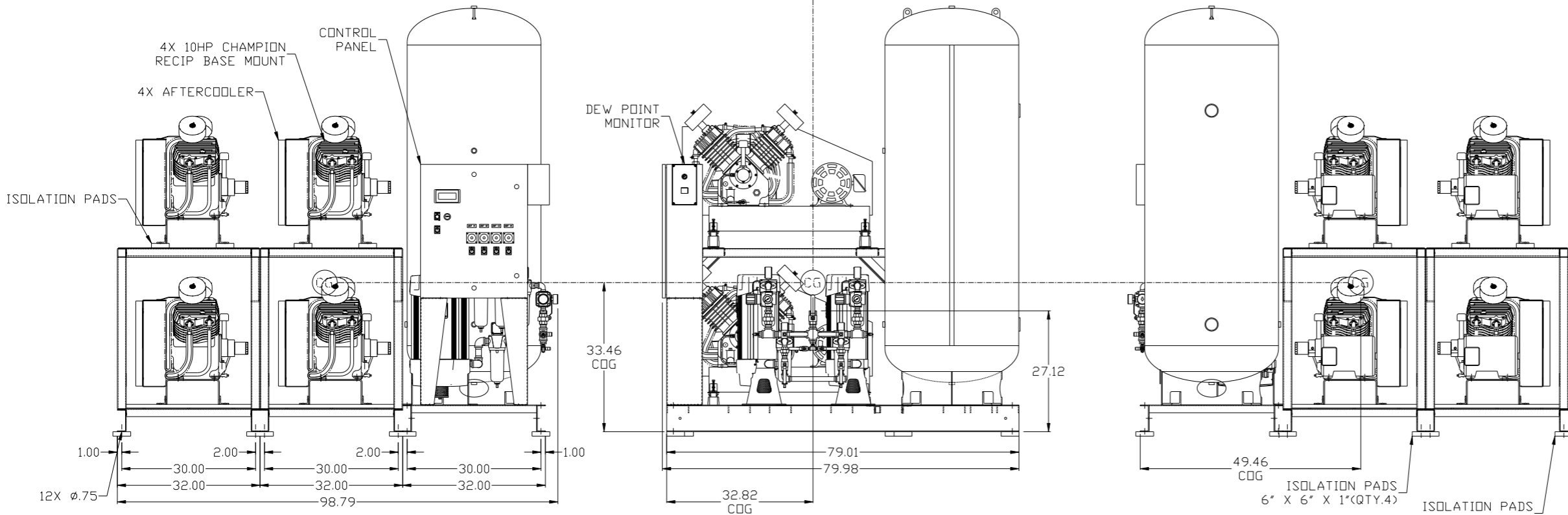
TOTAL WEIGHT: 4494 LBS
C.O.G. DIMENSIONS
X (FRONT): -49.46"
Y (RIGHT): 32.82"
Z (HEIGHT): 33.46"

REV	ZONE	REVISION	DATE	ECN	NAME	CHKD
B-1	ALL	RELEASE TO PRODUCTION	10/27/10	22470	AEK	GES
B-2	2C-7	ADDED UNLADDER LINES TO PUMPS	11/4/10	22470	AEK	GES
B-3	1 ALL	REMOVED REGULATOR FROM DP MONITOR LINE	11/29/10	22470	AEK	GES
B-4	2 A6	ADDED DRAIN OIL SEPARATOR NOTE	12/3/10	22470	AEK	GES
B-5	2 B4	CORRECTED GAUGE CALLOUT	2/15/11	22470	AEK	GES
C-1	ALL	ADDED FINAL FILTER	3/11/11	22573	AEK	GES
D-1	1 ALL	MOVED CONTROL PANEL TO ATC SKID	4/21/11	22594	AEK	GES
E-1	2, C6	CHANGED CV POSITION, ADDED BLEED VALVE	5/12/11	22546	GES	DMS
F-1	1 ALL	REPLACED SPRING ISO MOUNTS W/ ISO PADS	4/5/12	22470	AEK	GES
G-1	3 ALL	ADDED SHEET 3	8/21/12	22723	AEK	KMB
G-1	1 ALL	ADDED SYSTEM CENTER OF GRAVITY INFORMATION				
H-1	2 ALL	UPDATED SEPARATOR E-DRAINS	3/12/13	PXEC0030	AEK	GES
H-1	2 D5	ADDED SNUBBER VALVE				
J-1	1,3 ALL	CORRECTED DRYER FRAME ORIENTATION	11/11/15	PXEC0093	AEK	GES
K-1	2 B4	REMOVED SNUBBER VALVE	5/2/17	PXEC0107	MJD	KMB
L-1	1,3 ALL	UPDATED TO NANO DRYERS	9/21/17	PXEC0174	AEK	KMB



MINIMUM RECOMMENDED MAINTENANCE CLEARANCE

MINIMUM RECOMMENDED ELECTRICAL PANEL CLEARANCE PER OSHA/NEC REQUIREMENTS

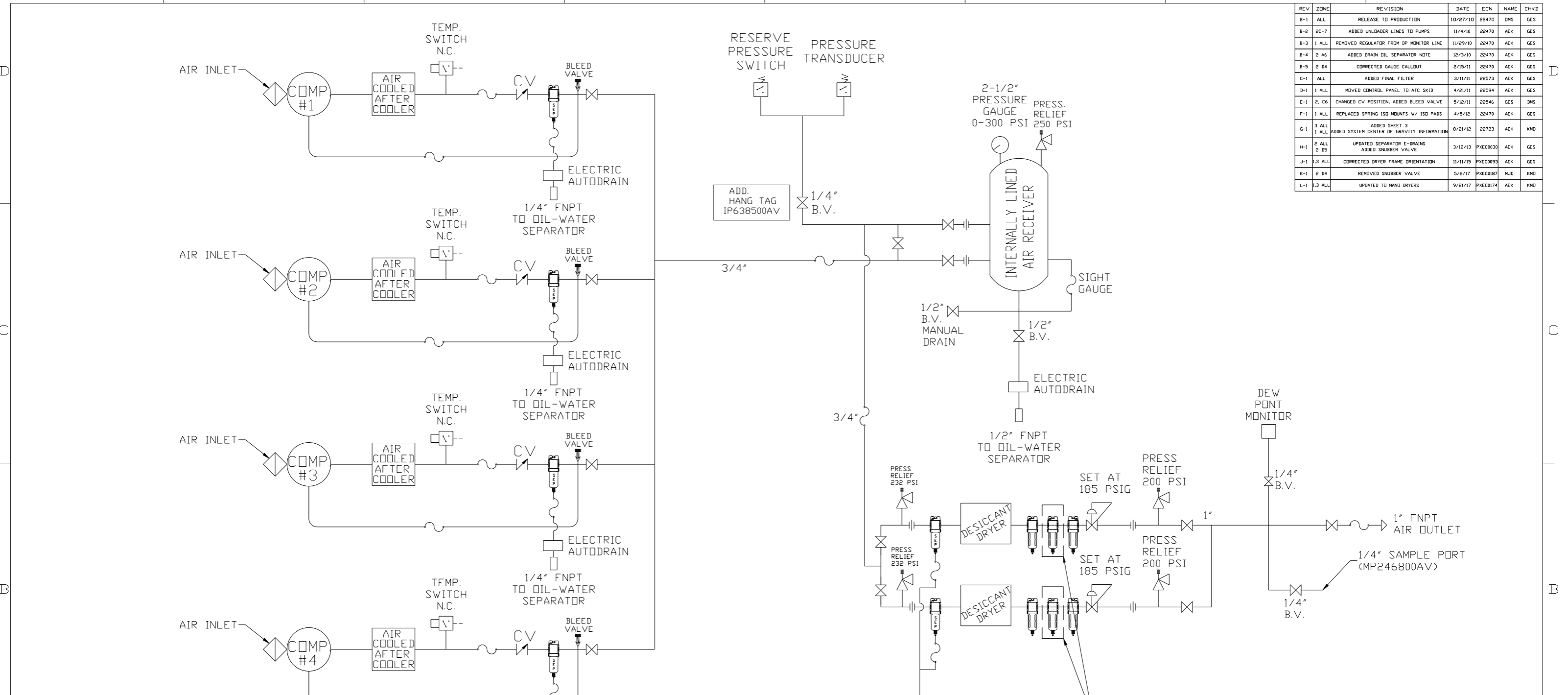


NOTE: SYSTEM DESIGNED IN COMPLIANCE WITH U.S. NFPA '99, LATEST EDITION.

SYMBOL LEGEND		AUTOCAD REL2008 LT		DO NOT SCALE DRAWING FOR DIMENSIONS	
⊖	MINUS DRAFT	+	PLUS DRAFT	Sheet 1 of 3	
⊕	ADDITIONAL CONTROL REQ'D	BR	BRINELL HARDNESS	SCALE 1:14	
TOLERANCES NOT SPECIFIED		INCH		DRAWN BY: AEK	
.XX ±				CHECKED BY: GES	
.XXX ±				APPROVED BY: ENGINEERING MFG/MKTG	
<< DEG >> ±				10/27/10 10/27/10 10/27/10 10/27/10	
CONFIDENTIAL DISCLOSURE		PART NAME		MATERIAL	
This drawing is the property of POWEREX, INC. of the SCOTT FEITZER COMPANY and subject to return on demand. Its contents are confidential and must not be copied or submitted to outside parties for use or examination.		QUADPLEX INSTRUMENT AIR 10HP 240GAL BASEMOUNT DUPLEX DESICCANT		N/A	
DRAWN BY: AEK		CHECKED BY: GES		APPROVED BY: ENGINEERING MFG/MKTG	
10/27/10		10/27/10		10/27/10 10/27/10	
MATERIAL: N/A		PART NAME: QUADPLEX INSTRUMENT AIR 10HP 240GAL BASEMOUNT DUPLEX DESICCANT		MATERIAL: N/A	
DWG NO: IPQ1006X5		SIZE: D		DWG NO: IPQ1006X5	

denotes center of gravity (CG)

REV	ZONE	REVISION	DATE	ECN	NAME	CHKD
B-1	ALL	RELEASE TO PRODUCTION	10/27/10	22470	DMS	GES
B-2	2C-7	ADDED UNLADDER LINES TO PUMPS	11/4/10	22470	AEK	GES
B-3	1 ALL	REMOVED REGULATOR FROM DP MONITOR LINE	11/29/10	22470	AEK	GES
B-4	2 A6	ADDED DRAIN OIL SEPARATOR NOTE	12/3/10	22470	AEK	GES
B-5	2 B4	CORRECTED GAUGE CALLOUT	2/15/11	22470	AEK	GES
C-1	ALL	ADDED FINAL FILTER	3/11/11	22573	AEK	GES
D-1	1 ALL	MOVED CONTROL PANEL TO ATC SKID	4/21/11	22594	AEK	GES
E-1	2, C6	CHANGED CV POSITION, ADDED BLEED VALVE	5/12/11	22546	GES	DMS
F-1	1 ALL	REPLACED SPRING ISO MOUNTS w/ ISO PADS	4/5/12	22470	AEK	GES
G-1	3 ALL	ADDED SHEET 3	8/21/12	22723	AEK	KMB
	1 ALL	ADDED SYSTEM CENTER OF GRAVITY INFORMATION				
H-1	2 ALL	UPDATED SEPARATOR E-DRAINS	3/12/13	PXEC0030	AEK	GES
	2 DS	ADDED SNUBBER VALVE				
J-1	3 ALL	CORRECTED DRYER FRAME ORIENTATION	11/11/15	PXEC0093	AEK	GES
K-1	2 B4	REMOVED SNUBBER VALVE	5/2/17	PXEC0107	MJD	KMB
L-1	1,3 ALL	UPDATED TO HAND DRYERS	9/21/17	PXEC0174	AEK	KMB



LEGEND

	RELIEF VALVE		PRESSURE SWITCH
	INTAKE FILTER		REGULATOR
	AIR FILTER		SEPARATOR
	CARBON FILTER		CHECK VALVE
	BALL VALVE		FLEX LINE
	UNION		HIGH TEMP SWITCH

NOTES:

- 1) IF RESERVE COMPRESSOR IS ENERGIZED ALARM WILL OCCUR.
- 2) PIPING TO THE INLET BY OTHERS AND TO BE PER NFPA99
- 3) INSTRUMENTS DOWN STREAM OF SOURCE VALVE TO BE SUPPLIED BY OTHERS.
- 4) ROUTE ALL DRAINS TO AN OIL-WATER SEPARATOR, & DISPOSE OF ANY OIL IN ACCORDANCE WITH LOCAL, STATE, AND FEDERAL REGULATIONS.

SYMBOL LEGEND ⊖ = MINUS DRAFT ⊕ = PLUS DRAFT .XX ± .XXX ± \angle DEG ±		= ADDITIONAL CONTROL REQ'D = BRINELL HARDNESS	Drawings to conform to the current revision of the following ANSI standards: Y14.3 Multi and sectional view dgs. Y14.5M Dimensioning and tolerancing
TOLERANCES NOT SPECIFIED AUTOCAD REL2008 LT INCH		DO NOT SCALE DRAWING FOR DIMENSIONS Sheet 2 of 3 SCALE 1:14	
CONFIDENTIAL DISCLOSURE This drawing is the property of POWEREX, INC. OF THE SCOTT FETZER COMPANY and subject to return on demand. Its contents are confidential and must not be copied or submitted to outside parties for use or examination.			
DRAWN BY: AEK 10/27/10		CHECKED BY: GES 10/27/10	
APPROVED BY: DMS 10/27/10		APPROVED BY: RJR 10/27/10	
MATERIAL: N/A		POWEREX 150 PRODUCTION DRIVE, HARRISON, OHIO 45030 Ph: 888-769-7979 FAX: (513) 367-3125	
PART NAME: QUADPLEX INSTRUMENT AIR COMPRESSOR FLOW SCHEMATIC		DWG NO: IPQ1006X5D SIZE: D	

