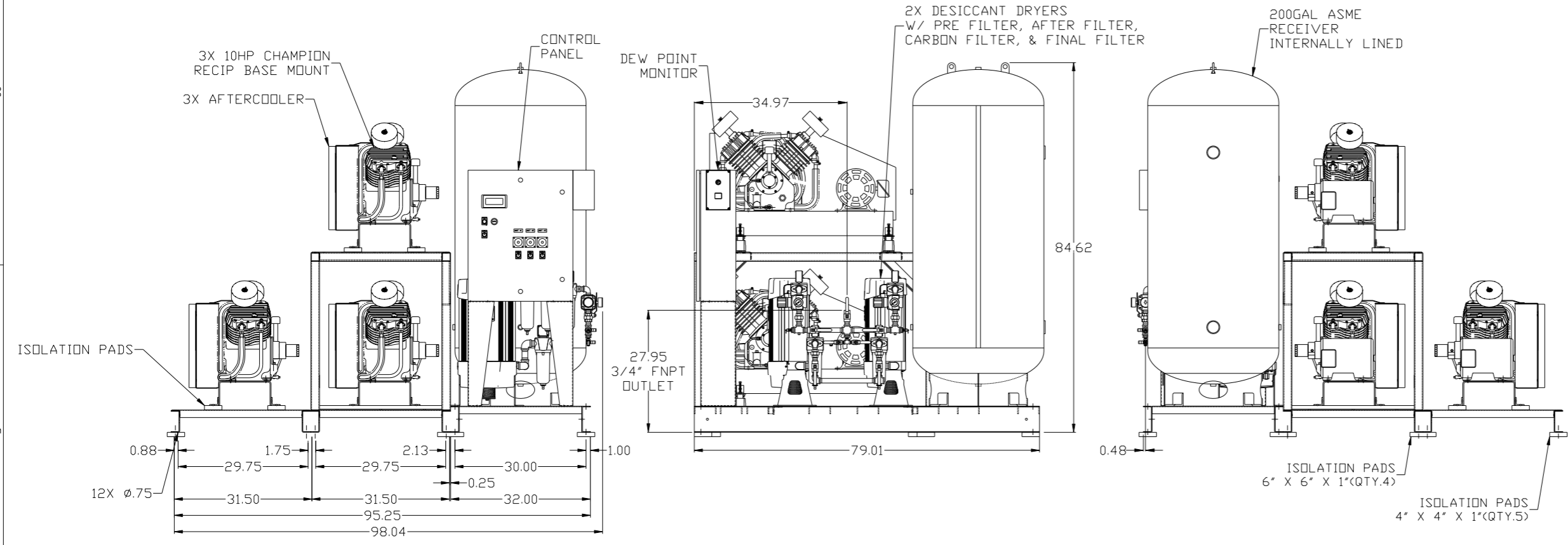
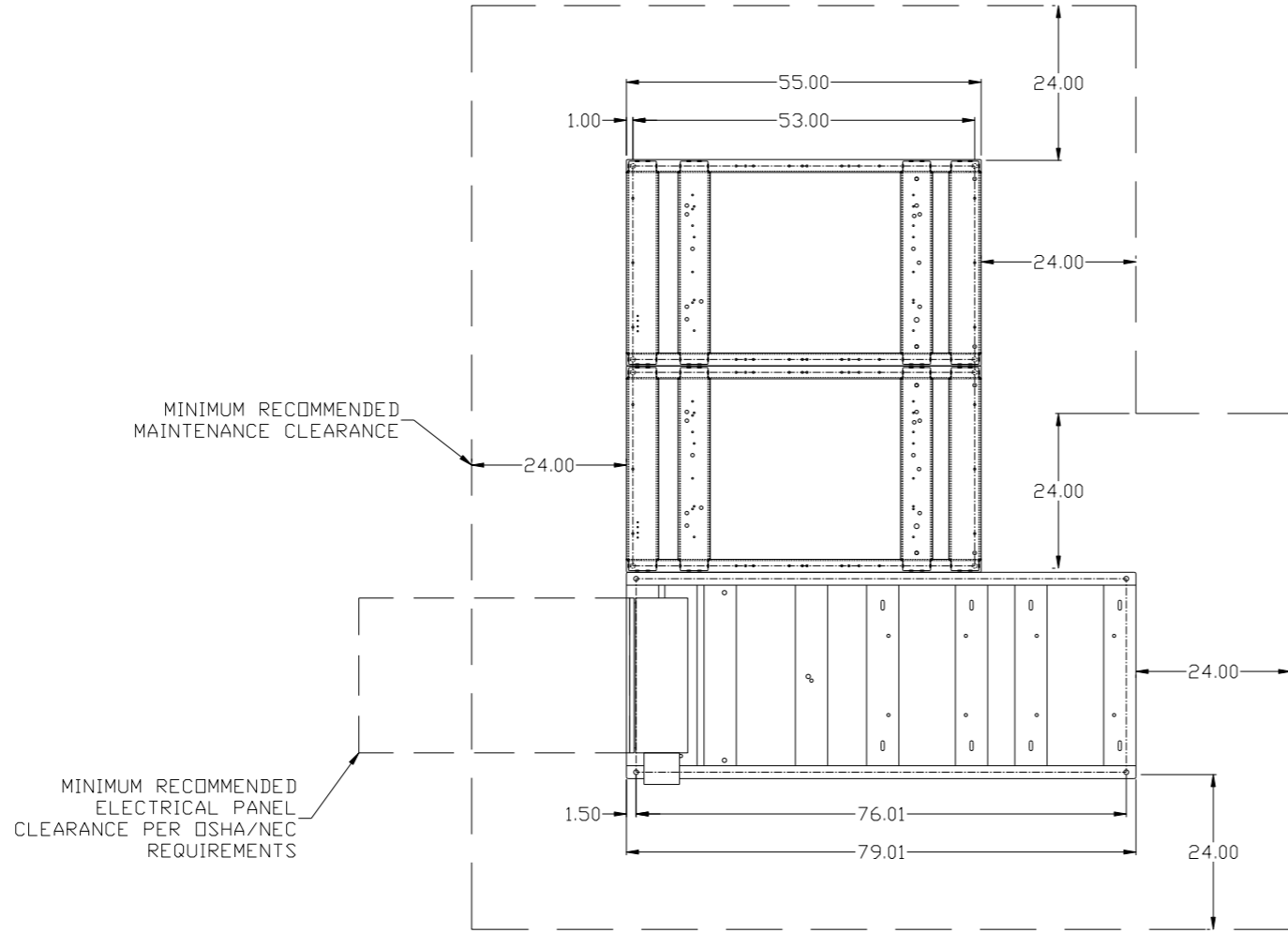


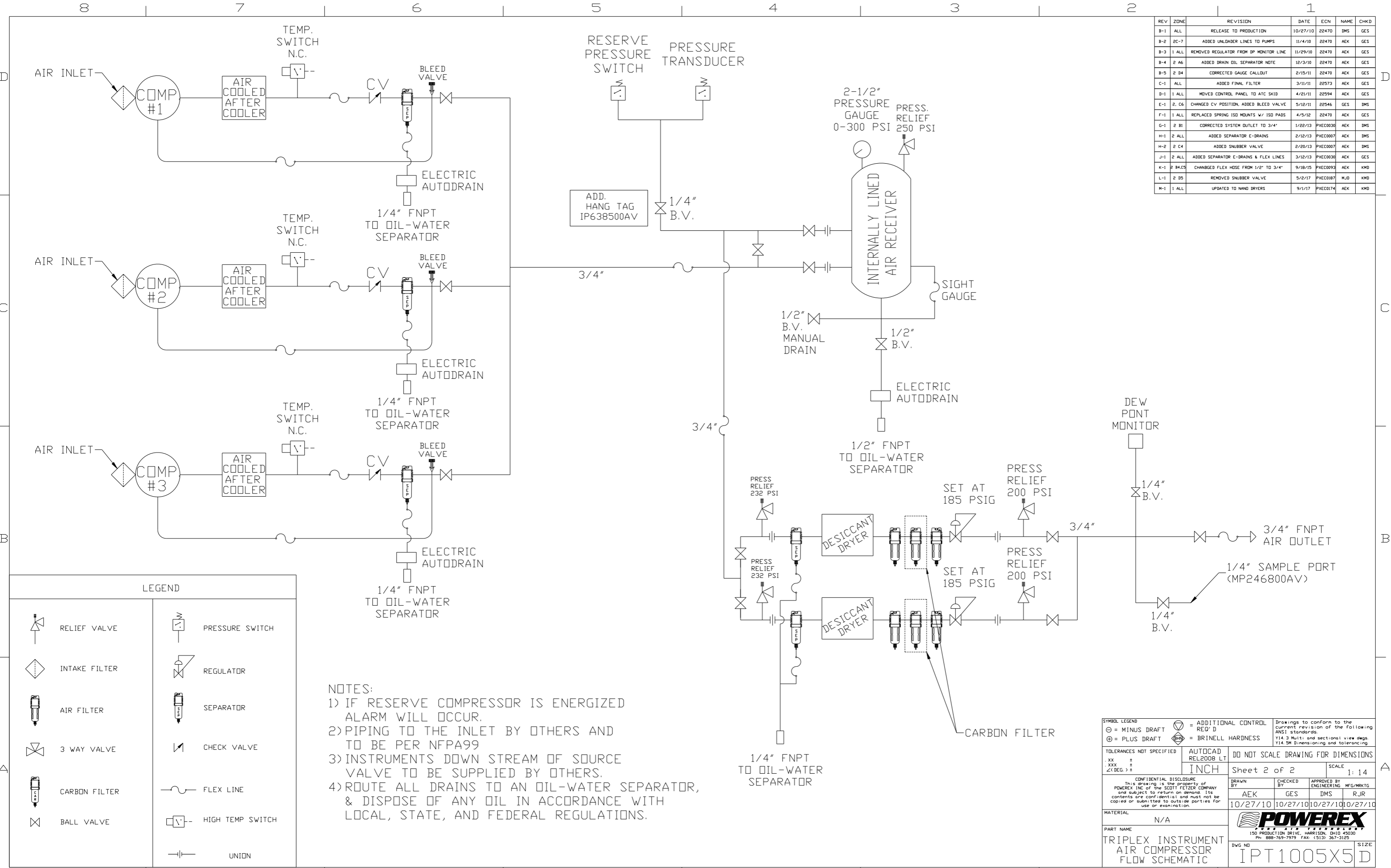
REV	ZONE	REVISION	DATE	ECN	NAME	CHKD
B-1	ALL	RELEASE TO PRODUCTION	10/27/10	22470	AEK	GES
B-2	2C-7	ADDED UNLADDER LINES TO PUMPS	11/4/10	22470	AEK	GES
B-3	1 ALL	REMOVED REGULATOR FROM DP MONITOR LINE	11/29/10	22470	AEK	GES
B-4	2 A6	ADDED DRAIN OIL SEPARATOR NOTE	12/3/10	22470	AEK	GES
B-5	2 B4	CORRECTED GAUGE CALLOUT	2/15/11	22470	AEK	GES
C-1	ALL	ADDED FINAL FILTER	3/11/11	22573	AEK	GES
D-1	1 ALL	MOVED CONTROL PANEL TO ATC SKID	4/21/11	22594	AEK	GES
E-1	2, C6	CHANGED CV POSITION, ADDED BLEED VALVE	5/12/11	22546	GES	DMS
F-1	1 ALL	REPLACED SPRING ISO MOUNTS W/ ISO PADS	4/5/12	22470	AEK	GES
G-1	2 B1	CORRECTED SYSTEM OUTLET TO 3/4"	1/22/13	PXEC0030	AEK	DMS
H-1	2 ALL	ADDED SEPARATOR E-DRAINS	2/12/13	PXEC0007	AEK	DMS
H-2	2 C4	ADDED SNUBBER VALVE	2/20/13	PXEC0007	AEK	DMS
J-1	2 ALL	ADDED SEPARATOR E-DRAINS & FLEX LINES	3/12/13	PXEC0030	AEK	GES
K-1	2 B4,C5	CHANGED FLEX HOSE FROM 1/2" TO 3/4"	9/18/15	PXEC0093	AEK	KMD
L-1	2 D5	REMOVED SNUBBER VALVE	5/2/17	PXEC0187	MJD	KMD
M-1	1 ALL	UPDATED TO NANO DRYERS	9/1/17	PXEC0174	AEK	KMD



NOTE: SYSTEM DESIGNED IN COMPLIANCE WITH U.S. NFPA '99, LATEST EDITION.

SYMBOL LEGEND		= ADDITIONAL CONTROL REQ'D = BRINELL HARDNESS		Drawings to conform to the current revision of the following ANSI standards: Y14.3 Multi and sectional view dsgs. Y14.5M Dimensioning and tolerancing	
TOLERANCES NOT SPECIFIED	AUTOCAD REL2008 LT	DO NOT SCALE DRAWING FOR DIMENSIONS			
.XX ±	INCH	Sheet 1 of 2	SCALE	1:14	
.XXX ±					
<Z< DEG ±					
CONFIDENTIAL DISCLOSURE This drawing is the property of POWEREX, INC. of the SCOTT FELTZER COMPANY and subject to return on demand. Its contents are confidential and must not be copied or submitted to outside parties for use or examination.		DRAWN BY AEK	CHECKED BY GES	APPROVED BY ENGINEERING MFG/MKTG DMS RJR	
MATERIAL N/A		10/27/10	10/27/10	10/27/10	
PART NAME TRIPLEX INSTRUMENT AIR 10HP 200GAL BASEMOUNT DUPLX DESICCANT		 150 PRODUCTION DRIVE, HARRISON, OHIO 45030 Ph: 888-769-7979 Fax: (513) 367-3125		SIZE IPT1005X5D	

REV	ZONE	REVISION	DATE	ECN	NAME	CHKD
B-1	ALL	RELEASE TO PRODUCTION	10/27/10	22470	DMS	GES
B-2	2C-7	ADDED UNLADDER LINES TO PUMPS	11/4/10	22470	AEK	GES
B-3	1 ALL	REMOVED REGULATOR FROM DP MONITOR LINE	11/29/10	22470	AEK	GES
B-4	2 A6	ADDED DRAIN OIL SEPARATOR NOTE	12/3/10	22470	AEK	GES
B-5	2 B4	CORRECTED GAUGE CALLOUT	2/15/11	22470	AEK	GES
C-1	ALL	ADDED FINAL FILTER	3/11/11	22573	AEK	GES
D-1	1 ALL	MOVED CONTROL PANEL TO ATC SKID	4/21/11	22594	AEK	GES
E-1	2, C6	CHANGED CV POSITION, ADDED BLEED VALVE	5/12/11	22546	GES	DMS
F-1	1 ALL	REPLACED SPRING ISO MOUNTS W/ ISO PADS	4/5/12	22470	AEK	GES
G-1	2 B1	CORRECTED SYSTEM OUTLET TO 3/4"	1/22/13	PXEC0030	AEK	DMS
H-1	2 ALL	ADDED SEPARATOR E-DRAINS	2/12/13	PXEC0007	AEK	DMS
H-2	2 C4	ADDED SNUBBER VALVE	2/20/13	PXEC0007	AEK	DMS
J-1	2 ALL	ADDED SEPARATOR E-DRAINS & FLEX LINES	3/12/13	PXEC0030	AEK	GES
K-1	2 B4,C5	CHANGED FLEX HOSE FROM 1/2" TO 3/4"	9/18/15	PXEC0093	AEK	KMD
L-1	2 D5	REMOVED SNUBBER VALVE	5/2/17	PXEC0187	MJD	KMD
M-1	1 ALL	UPDATED TO NANO DRYERS	9/1/17	PXEC0174	AEK	KMD



NOTES:
 1) IF RESERVE COMPRESSOR IS ENERGIZED ALARM WILL OCCUR.
 2) PIPING TO THE INLET BY OTHERS AND TO BE PER NFPA99
 3) INSTRUMENTS DOWN STREAM OF SOURCE VALVE TO BE SUPPLIED BY OTHERS.
 4) ROUTE ALL DRAINS TO AN OIL-WATER SEPARATOR, & DISPOSE OF ANY OIL IN ACCORDANCE WITH LOCAL, STATE, AND FEDERAL REGULATIONS.

SYMBOL LEGEND		⊕ = MINUS DRAFT	⊖ = PLUS DRAFT	⊕ = ADDITIONAL CONTROL REQ'D	⊖ = BRINELL HARDNESS	Drawings to conform to the current revision of the following ANSI standards: Y14.3 Multi and sectional view dsgs. Y14.5M Dimensioning and tolerancing
TOLERANCES NOT SPECIFIED		.XX ±	.XXX ±	< DEG. ±	AUTOCAD REL2008 LT	DO NOT SCALE DRAWING FOR DIMENSIONS
CONFIDENTIAL DISCLOSURE This drawing is the property of POWEREX, INC. or the SCOTT FEITZER COMPANY and subject to return on demand. Its contents are confidential and must not be copied or submitted to outside parties for use or examination.		DRAWN BY AEK		CHECKED BY GES	APPROVED BY ENGINEERING DMS	MFG/MKTG RJR
MATERIAL N/A		10/27/10		10/27/10		10/27/10
PART NAME TRIPLEX INSTRUMENT AIR COMPRESSOR FLOW SCHEMATIC		DWG NO IPT1005X5D		SCALE 1:14		SIZE D

POWEREX
 150 PRODUCTION DRIVE, HARRISON, OHIO 45030
 Ph: 888-769-7979 FAX: (513) 367-3125