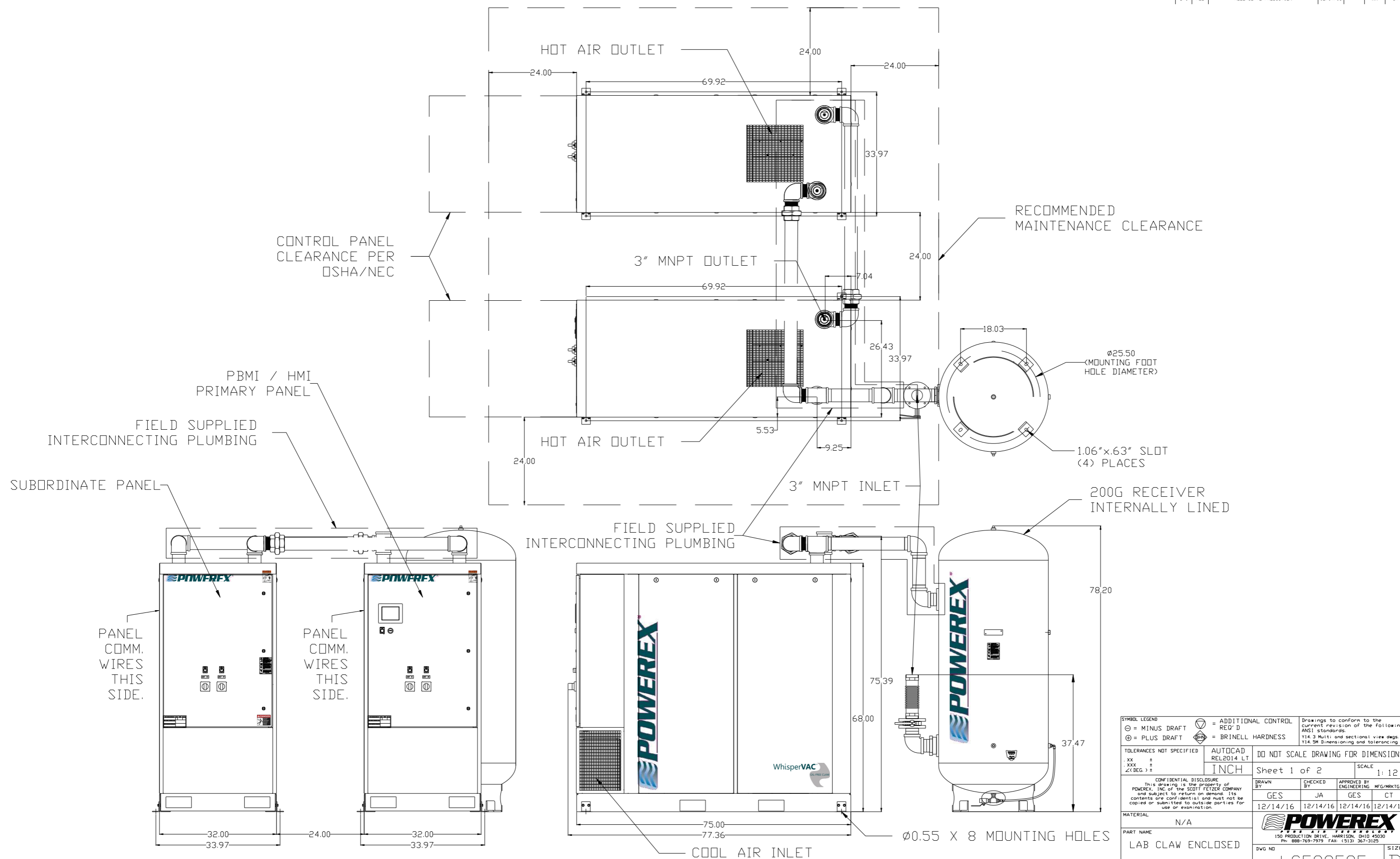
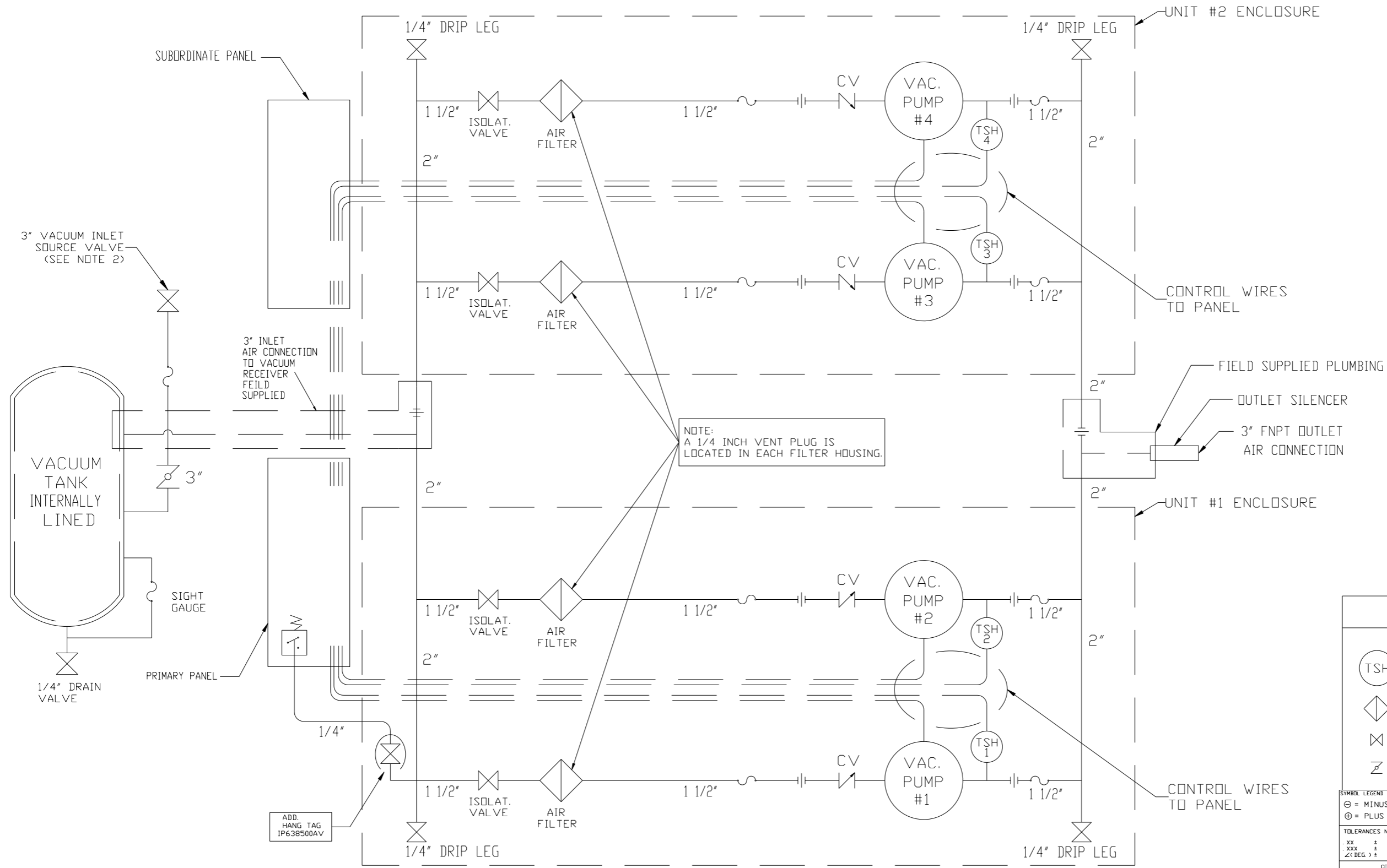


REV	ZONE	REVISION	DATE	ECN	NAME	CHKD
B-1	ALL	RELEASE TO PRODUCTION	12/14/16	PKC0099	GES	JA



SYMBOL LEGEND		= ADDITIONAL CONTROL REQ'D		Drawings to conform to the current revision of the following ANSI standards	
⊖	MINUS DRAFT	⊕	PLUS DRAFT	Y14.3	Multi and sectional view dgs.
⊕	PLUS DRAFT	⊖	MINUS DRAFT	Y14.5M	Dimensioning and tolerancing
TOLERANCES NOT SPECIFIED		AUTOCAD REL2014 LT		DO NOT SCALE DRAWING FOR DIMENSIONS	
.XX	±	INCH		Sheet 1 of 2	
.XXX	±			SCALE 1:12	
<∠DEG.>	±				
CONFIDENTIAL DISCLOSURE					
This drawing is the property of POWEREX, INC. of the SCOTT FETZER COMPANY and subject to return on demand. Its contents are confidential and must not be copied or submitted to outside parties for use or examination.					
DRAWN BY		CHECKED BY		APPROVED BY	
GES		JA		GES CT	
12/14/16		12/14/16		12/14/16 12/14/16	
MATERIAL N/A					
PART NAME					
LAB CLAW ENCLOSED					
QUADPLEX 5HP 200GV					
DWG NO LCEQ0505				SIZE D	

REV	ZONE	REVISION	DATE	ECN	NAME	CHKD
B-1	ALL	RELEASE TO PRODUCTION	12/14/16	PHC0099	GES	JA



NOTE:
A 1/4 INCH VENT PLUG IS
LOCATED IN EACH FILTER HOUSING.

- NOTES:
1) TSH - TEMPERATURE SWITCH HIGH
2) PER NFPA THE SYSTEM WILL REQUIRE A SOURCE VALVE (SUPPLIED BY OTHERS).

LEGEND	
(TSH)	TEMP. SWITCH
(◇)	AIR FILTER
(⊗)	BALL VALVE
(Z)	BUTTERFLY VALVE
(⊖)	VACUUM TRANSDUCER
(∇)	CHECK VALVE
(~)	FLEX LINE
(-)	UNION

SYMBOL LEGEND: ⊖ = MINUS DRAFT, ⊕ = PLUS DRAFT, ∇ = ADDITIONAL CONTROL REQ'D, ⊗ = BRINELL HARDNESS. Drawings to conform to the current revision of the following ANSI standards: Y14.3 Multi and sectional view dsgs, Y14.5M Dimensioning and tolerancing.

TOLERANCES NOT SPECIFIED: .XX ±, .XXX ±, Z<DEG.> ±. AUTOCAD REL2008LT. DO NOT SCALE DRAWING FOR DIMENSIONS. Sheet 2 of 2. SCALE 1:12.

CONFIDENTIAL DISCLOSURE: This drawing is the property of POWEREX, INC. of the SCOTT FETZER COMPANY and subject to return on demand. Its contents are confidential and must not be copied or submitted to outside parties for use or examination.

DRAWN BY	CHECKED BY	APPROVED BY	ENGINEERING	MFG/MRKTG
GES	JA	GES	CT	
12/14/16	12/14/16	12/14/16	12/14/16	12/14/16

MATERIAL: N/A. PART NAME: LAB CLAW ENCLOSED. QUADPLEX VACUUM 200GV. DWG NO: LCEQ0505. SIZE: D. POWEREX: 150 PRODUCTION DRIVE, HARRISON, OHIO 43030. Ph: 888-769-7979 FAX: (513) 367-3125.