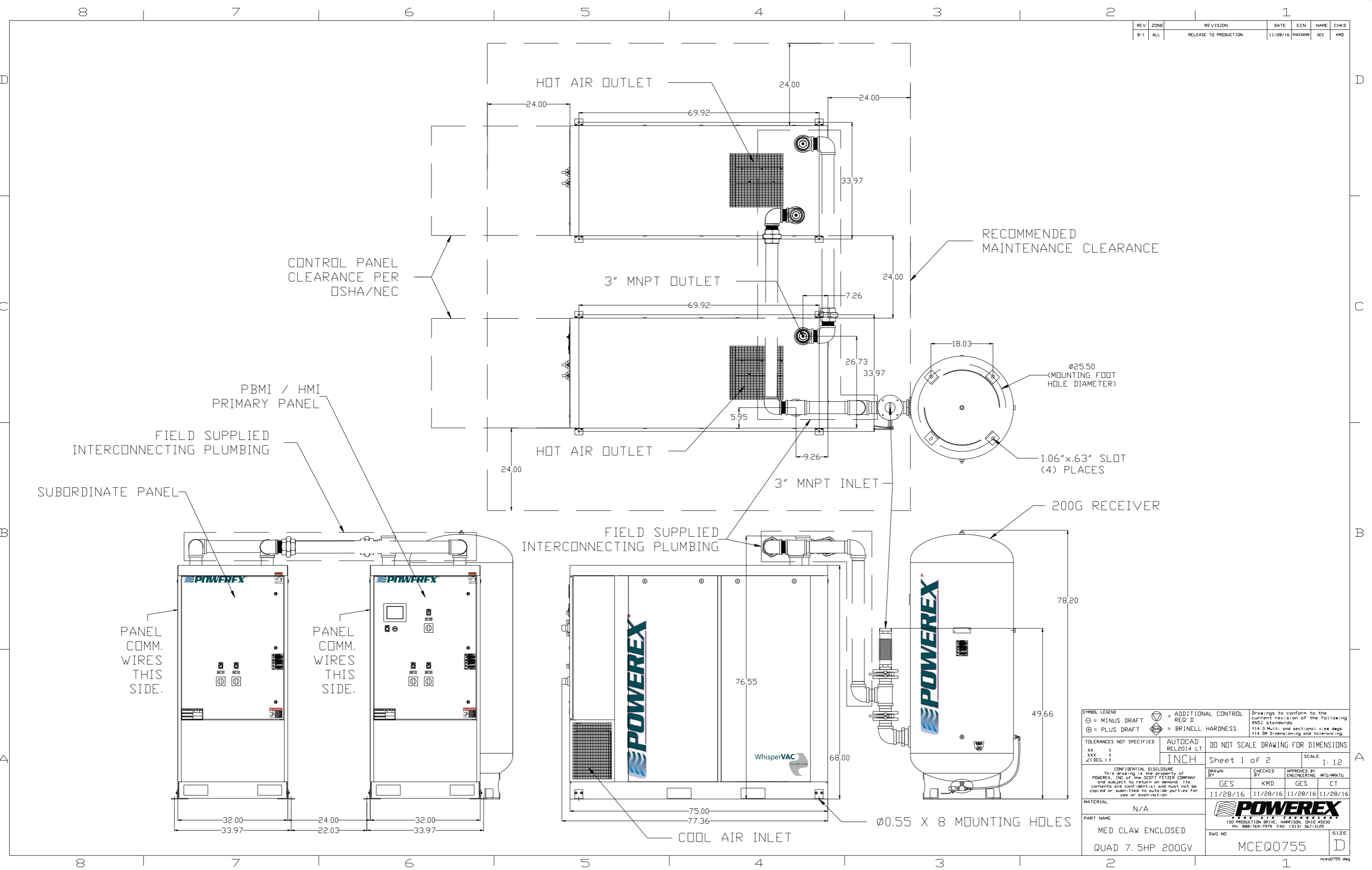
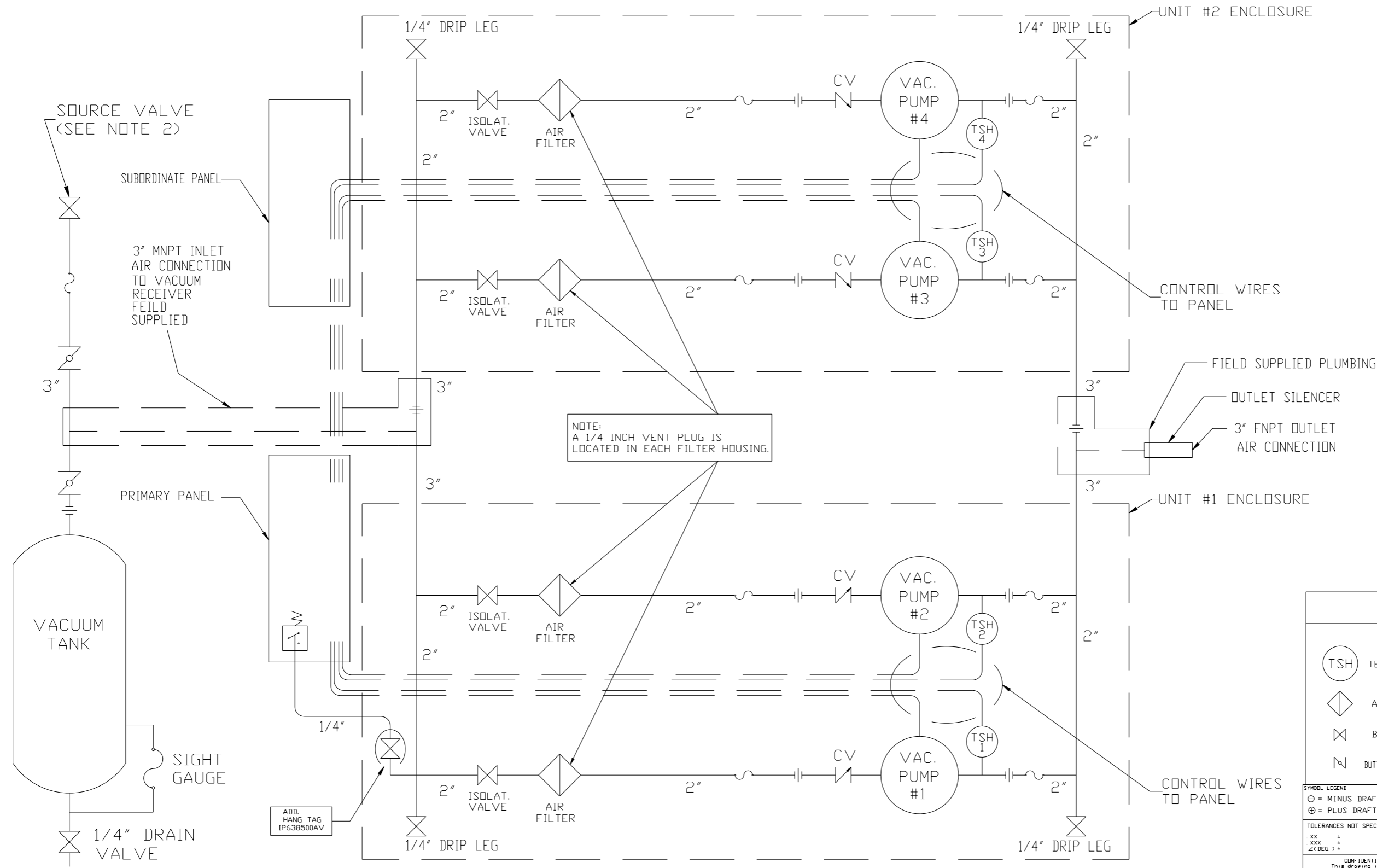


REV	ZONE	REVISION	DATE	ECN	NAME	CHKD
B-1	ALL	RELEASE TO PRODUCTION	11/28/16	PKC0099	GES	KMD



SYMBOL LEGEND ⊖ = MINUS DRAFT ⊕ = PLUS DRAFT ⦶ = ADDITIONAL CONTROL REQ'D ⦶ = BRINELL HARDNESS		Drawings to conform to the current revision of the following ANSI standards: Y14.3 Multi and sectional view dgs. Y14.5M Dimensioning and tolerancing
TOLERANCES NOT SPECIFIED .XX ± .XXX ± \angle(DEG.) ±		DO NOT SCALE DRAWING FOR DIMENSIONS Sheet 1 of 2 SCALE 1:12
CONFIDENTIAL DISCLOSURE This drawing is the property of POWEREX, INC. of the SCOTT FETZER COMPANY and subject to return on demand. Its contents are confidential and must not be copied or submitted to outside parties for use or examination.		DRAWN BY GES CHECKED BY KMD APPROVED BY ENGINEERING MFG/MRKTG 11/28/16 11/28/16 11/28/16 11/28/16
MATERIAL N/A		POWEREX 150 PRODUCTION DRIVE, HARRISON, OHIO 45030 Ph: 888-769-7979 FAX: (513) 367-3125
PART NAME MED CLAW ENCLOSED QUAD 7.5HP 200GV		DWG NO MCEQ0755 SIZE D

REV	ZONE	REVISION	DATE	ECN	NAME	CHKD
B-1	ALL	RELEASE TO PRODUCTION	11/28/16	MCE0099	GES	KMD



NOTE:
A 1/4 INCH VENT PLUG IS
LOCATED IN EACH FILTER HOUSING.

- NOTES:
1) TSH - TEMPERATURE SWITCH HIGH
2) PER NFPA THE SYSTEM WILL REQUIRE A SOURCE VALVE (SUPPLIED BY OTHERS).

LEGEND	
(TSH)	TEMP. SWITCH
◇	AIR FILTER
⊗	BALL VALVE
⊕	BUTTERFLY BALL VALVE
⊖	VACUUM TRANSDUCER
↗	CHECK VALVE
~	FLEX LINE
— —	UNION

SYMBOL LEGEND: ⊖ = MINUS DRAFT, ⊕ = PLUS DRAFT, ⊖ = ADDITIONAL CONTROL REQ'D, ⊕ = BRINELL HARDNESS

TOLERANCES NOT SPECIFIED: .XX ±, .XXX ±, <Z(DEG.) ±

CONFIDENTIAL DISCLOSURE: This drawing is the property of POWEREX, INC. of the SCOTT FETZER COMPANY and subject to return on demand. Its contents are confidential and must not be copied or submitted to outside parties for use or examination.

MATERIAL: N/A		PART NAME: MED CLAW ENCLOSED QUAD VACUUM	
DRAWN BY: GES		CHECKED BY: KMD	
APPROVED BY: GES		MFG/MRKTG: CT	
11/28/16		11/28/16	
11/28/16		11/28/16	
11/28/16		11/28/16	
11/28/16		11/28/16	

POWEREX
150 PRODUCTION DRIVE, HARRISON, OHIO 43030
Ph: 888-769-7979 FAX: (513) 367-3125