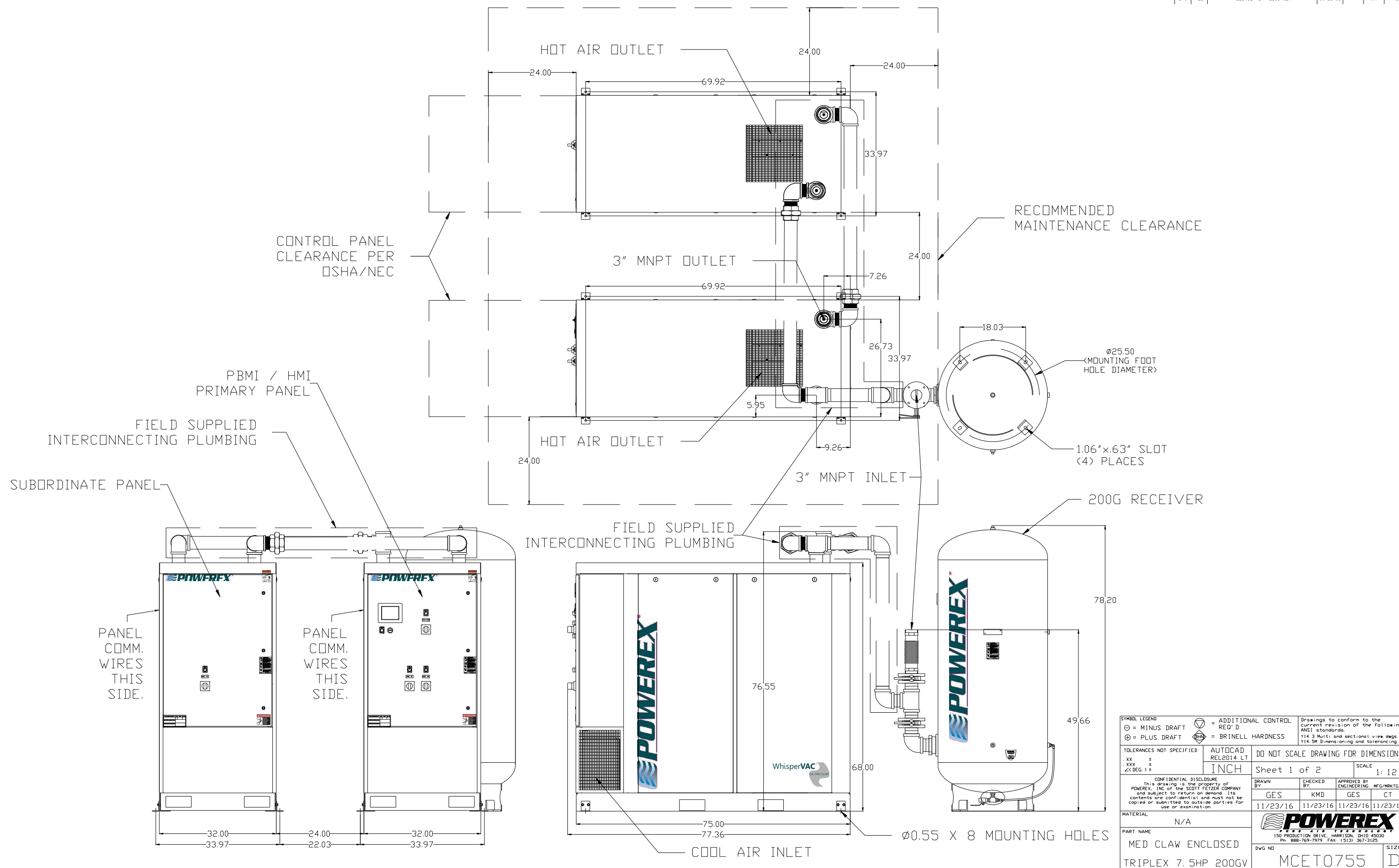
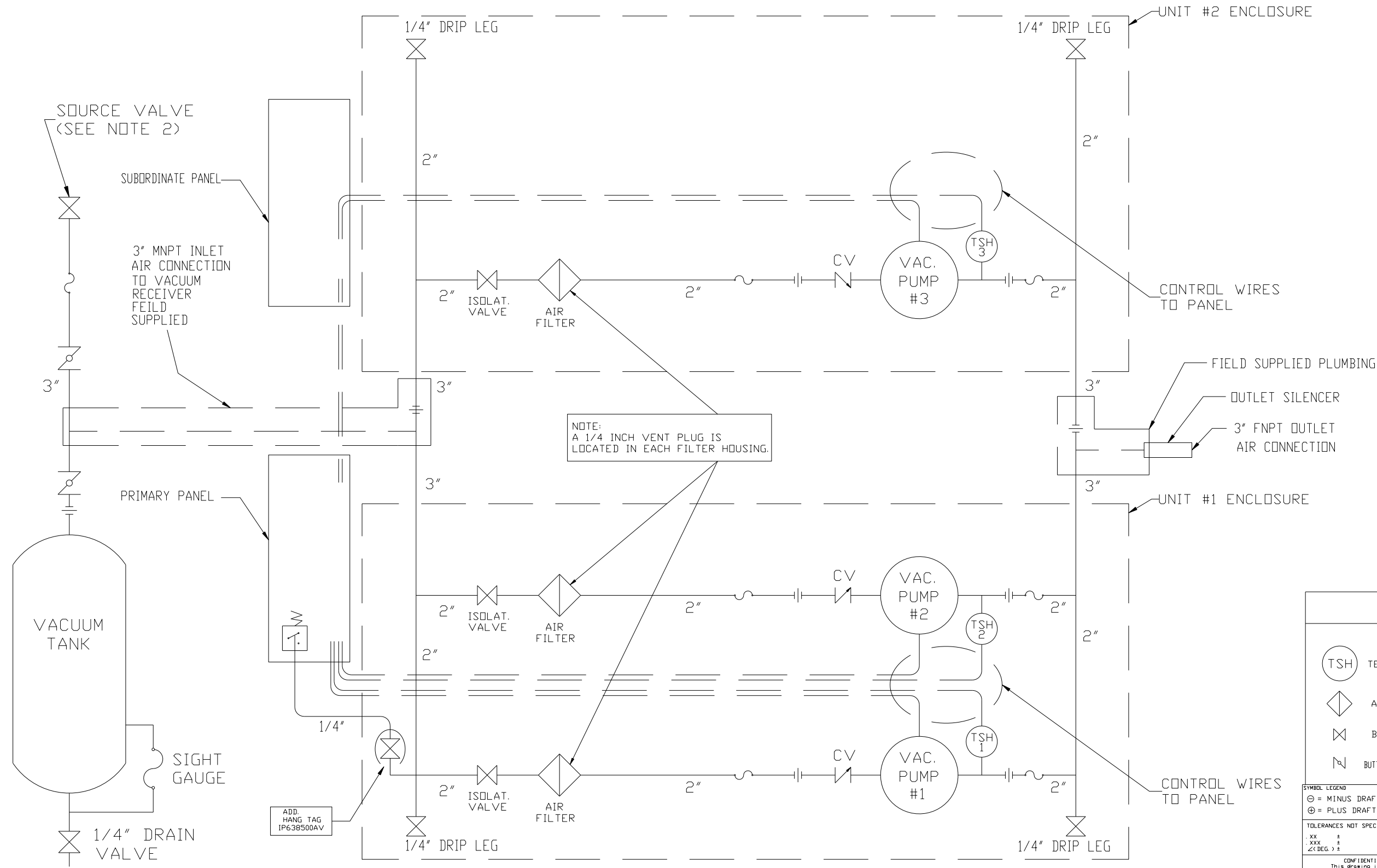


REV	ZONE	REVISION	DATE	ECN	NAME	CHKD
B-1	ALL	RELEASE TO PRODUCTION	11/23/16	PKC0099	GES	KMD



SYMBOL LEGEND ⊖ = MINUS DRAFT ⊕ = PLUS DRAFT ⚙ = ADDITIONAL CONTROL REQ'D ⚙ = BRINELL HARDNESS		Drawings to conform to the current revision of the following ANSI standards: Y14.3 Multi and sectional view dgs. Y14.5M Dimensioning and tolerancing
TOLERANCES NOT SPECIFIED .XX ± .XXX ± \angle(DEG.) ±	AUTOCAD REL2014 LT INCH	DO NOT SCALE DRAWING FOR DIMENSIONS Sheet 1 of 2 SCALE 1:12
CONFIDENTIAL DISCLOSURE This drawing is the property of POWEREX, INC. of the SCOTT FETZER COMPANY and subject to return on demand. Its contents are confidential and must not be copied or submitted to outside parties for use or examination.		
MATERIAL N/A	DRAWN BY GES 11/23/16	CHECKED BY KMD 11/23/16
PART NAME MED CLAW ENCLOSED TRIPLEX 7.5HP 200GV	APPROVED BY ENGINEERING GES 11/23/16	APPROVED BY MFG/MKTG CT 11/23/16
DWG NO MCET0755	SIZE D	nce10755.dwg

REV	ZONE	REVISION	DATE	ECN	NAME	CHKD
B-1	ALL	RELEASE TO PRODUCTION	11/23/16	PHC0099	GES	KMD



NOTE:
A 1/4 INCH VENT PLUG IS
LOCATED IN EACH FILTER HOUSING.

- NOTES:
1) TSH - TEMPERATURE SWITCH HIGH
2) PER NFPA THE SYSTEM WILL REQUIRE A SOURCE VALVE (SUPPLIED BY OTHERS).

LEGEND	
	TEMP. SWITCH
	AIR FILTER
	BALL VALVE
	BUTTERFLY BALL VALVE
	VACUUM TRANSDUCER
	CHECK VALVE
	FLEX LINE
	UNION

SYMBOL LEGEND: = MINUS DRAFT, = PLUS DRAFT, = ADDITIONAL CONTROL REQ'D, = BRINELL HARDNESS

TOLERANCES NOT SPECIFIED: .XX ±, .XXX ±, Z (DEG.) ±. AUTOCAD REL2008LT. DO NOT SCALE DRAWING FOR DIMENSIONS. Sheet 2 of 2. SCALE 1:12

CONFIDENTIAL DISCLOSURE: This drawing is the property of POWEREX, INC. of the SCOTT FETZER COMPANY and subject to return on demand. Its contents are confidential and must not be copied or submitted to outside parties for use or examination.

DRAWN BY	CHECKED BY	APPROVED BY	ENGINEERING	MFG/MKTG
GES	KMD	GES	CT	
11/23/16	11/23/16	11/23/16	11/23/16	11/23/16

MATERIAL: N/A. PART NAME: MED CLAW ENCLOSED TRIPLEX VACUUM. DWG NO: MCET0755. SIZE: D. 150 PRODUCTION DRIVE, HARRISON, OHIO 43030 Ph: 888-769-7979 FAX: (513) 367-3125