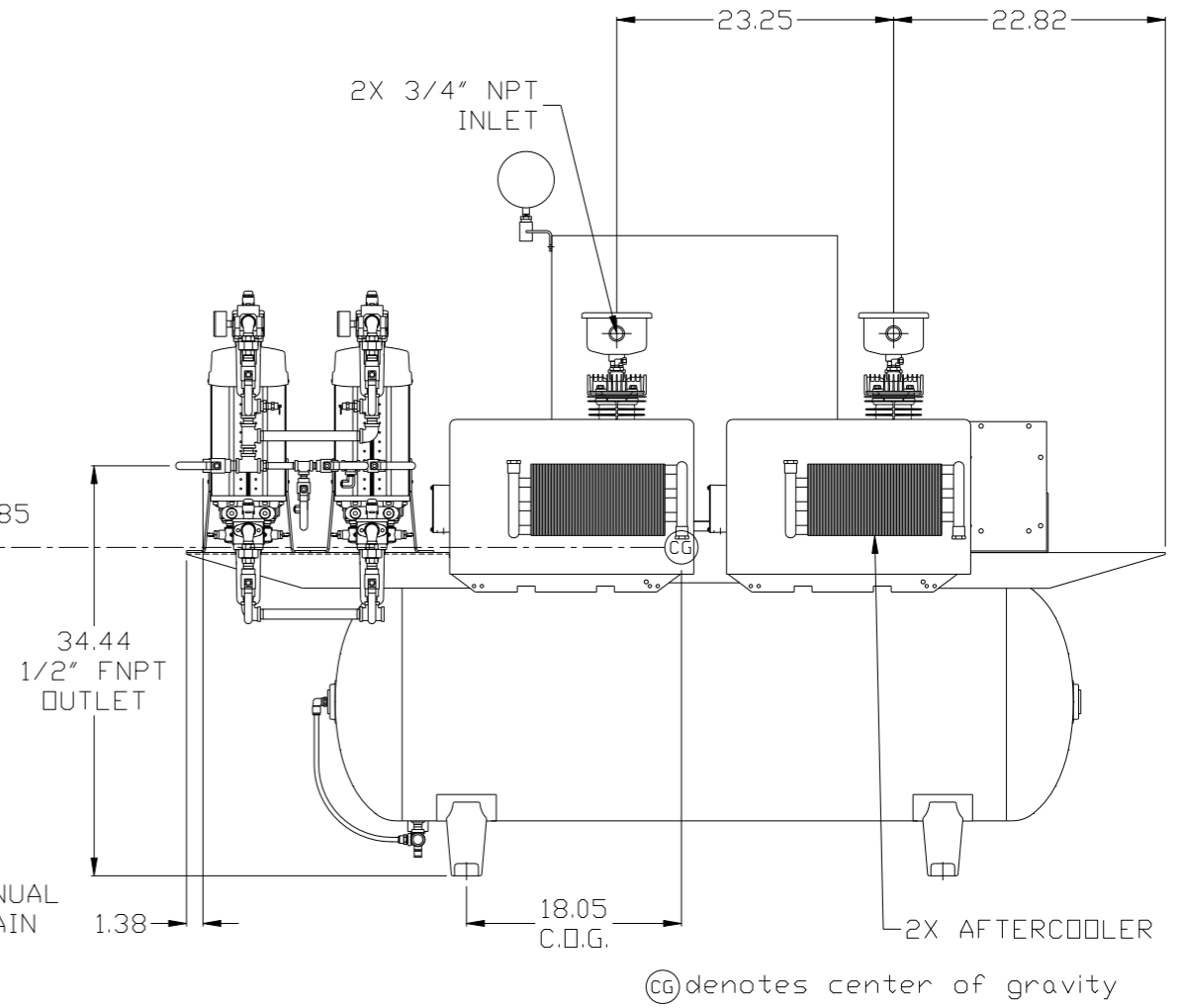
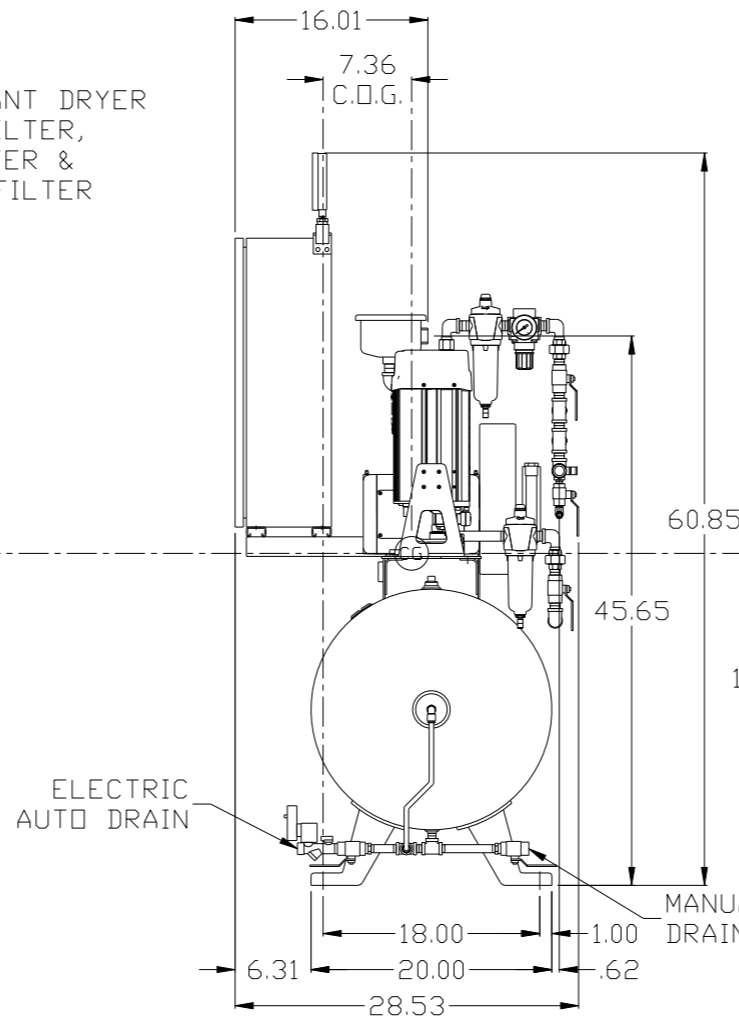
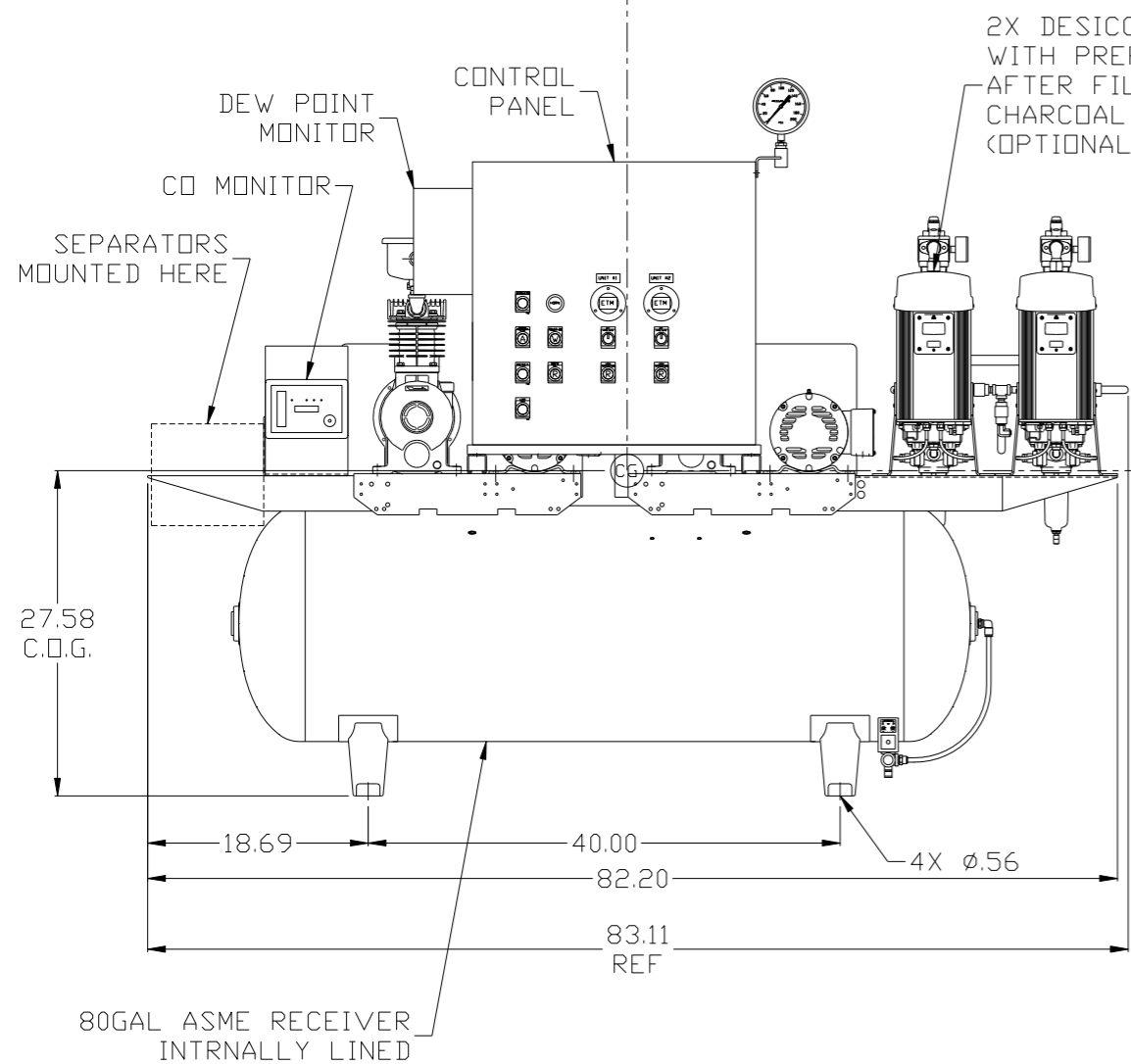
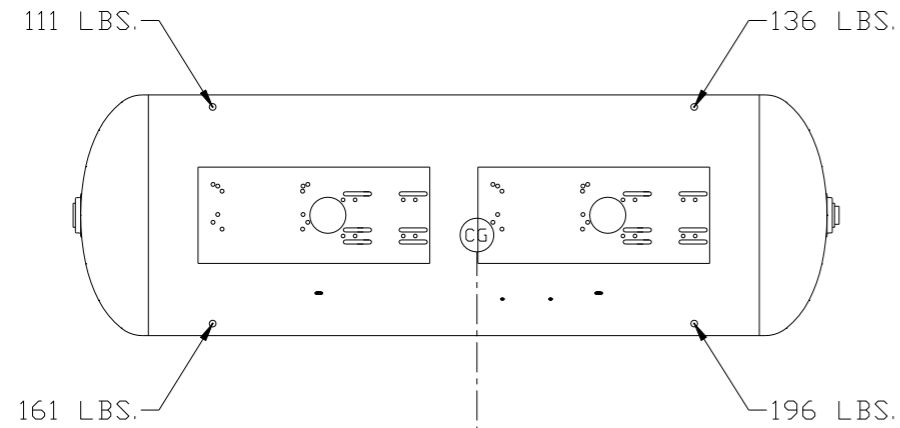


REV	ZONE	REVISION	DATE	ECN	NAME	CHKD
B-1	ALL	RELEASE TO PRODUCTION	6/3/09	22126	AEK	GES
C-1	1 ALL	UPDATED PANEL LOCATION PER PRODUCTION	2/26/10	22348	AEK	GES
	1 ALL	ADJUSTED INLET LOCATIONS PER PRODUCTION				
D-1	1 ALL	CORRECTED DRYER LOCATION PER PRODUCTION	4/13/11	22546	AEK	GES
E-1	2 D4	ADDED SNUBBER VALVE	2/20/12	22723	AEK	GES
E-2	1 ALL	ADDED CENTER OF GRAVITY INFORMATION	4/3/12	22723	AEK	GES
F-1	1 ALL	REMOVED CO MONITOR FROM CONTROL PANEL	12/5/13	PXEX0061	AEK	GES
G-1	2 D5	REMOVED SNUBBER VALVE	02/03/16	PXEC0133	MJD	AEK
H-1	1 ALL	UPDATED TO NANO DRYERS	8/18/17	PXEC0174	AEK	GES



Ⓞ denotes center of gravity

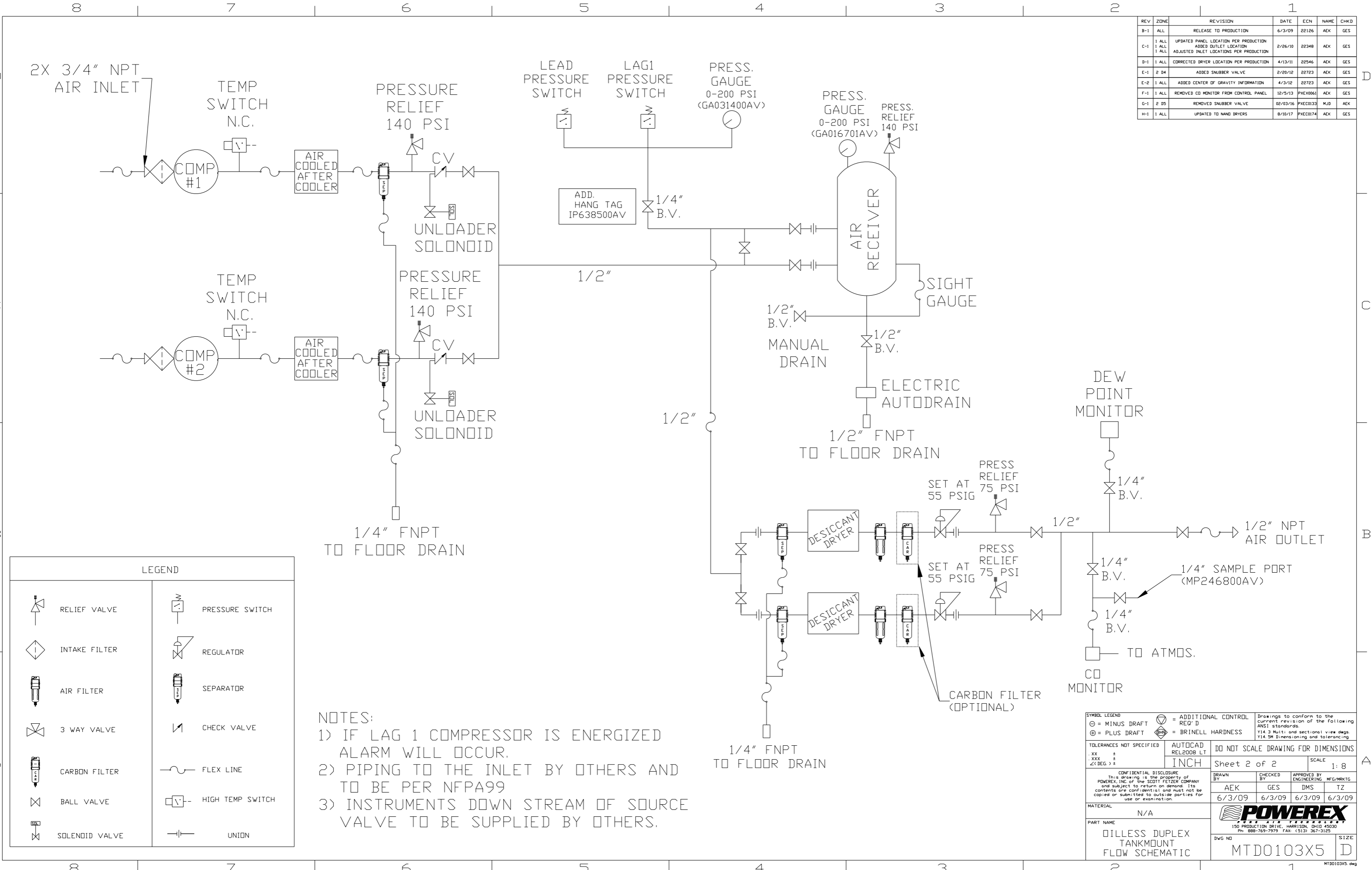
CENTER OF GRAVITY DATA:  
 TOTAL WEIGHT: 604 LBS  
 C.O.G. DIMENSIONS  
 X (FRONT): -18.05"  
 Y (RIGHT): 7.36"  
 Z (HEIGHT): 27.58"

NOTE: SYSTEM DESIGNED IN COMPLIANCE WITH U.S. NFPA '99, LATEST EDITION.

NOTE: A MINIMUM OF 24" CLEARANCE IS RECOMMENDED AROUND THE ENTIRE UNIT.

<b>SYMBOL LEGEND</b> ⊖ = MINUS DRAFT ⊕ = PLUS DRAFT ⊕ = ADDITIONAL CONTROL REQ'D HRC = BRINELL HARDNESS		Drawings to conform to the current revision of the following ANSI standards: Y14.3 Multi and sectional view dgs. Y14.5M Dimensioning and tolerancing	
TOLERANCES NOT SPECIFIED .XX ± .XXX ± <Z< DEG > ±		AUTOCAD REL2008 LT <b>INCH</b> DO NOT SCALE DRAWING FOR DIMENSIONS Sheet 1 of 2 SCALE 1:8	
<b>CONFIDENTIAL DISCLOSURE</b> This drawing is the property of POWEREX, INC. of the SCOTT FETZER COMPANY and subject to return on demand. Its contents are confidential and must not be copied or submitted to outside parties for use or examination.		DRAWN BY: AEK CHECKED BY: GES APPROVED BY: DMS, TZ 6/3/09 6/3/09 6/3/09 6/3/09	
MATERIAL: N/A		<b>POWEREX</b> 150 PRODUCTION DRIVE, HARRISON, OHIO 45030 Ph: 888-769-7979 FAX: (513) 367-3125	
PART NAME: 1HP OILLESS RECIP DUPLEX 80 GAL DUAL DESICCANT		DWG NO: MTD0103X5 SIZE: D	

REV	ZONE	REVISION	DATE	ECN	NAME	CHKD
B-1	ALL	RELEASE TO PRODUCTION	6/3/09	22126	AEK	GES
C-1	1 ALL	UPDATED PANEL LOCATION PER PRODUCTION	2/26/10	22348	AEK	GES
	1 ALL	ADJUSTED INLET LOCATIONS PER PRODUCTION				
D-1	1 ALL	CORRECTED DRYER LOCATION PER PRODUCTION	4/13/11	22546	AEK	GES
E-1	2 B4	ADDED SNUBBER VALVE	2/20/12	22723	AEK	GES
E-2	1 ALL	ADDED CENTER OF GRAVITY INFORMATION	4/3/12	22723	AEK	GES
F-1	1 ALL	REMOVED CO MONITOR FROM CONTROL PANEL	12/5/13	PXEX0061	AEK	GES
G-1	2 D5	REMOVED SNUBBER VALVE	02/03/16	PXEC0133	MJD	AEK
H-1	1 ALL	UPDATED TO NANO DRYERS	8/16/17	PXEC0174	AEK	GES



NOTES:  
 1) IF LAG 1 COMPRESSOR IS ENERGIZED ALARM WILL OCCUR.  
 2) PIPING TO THE INLET BY OTHERS AND TO BE PER NFPA99  
 3) INSTRUMENTS DOWN STREAM OF SOURCE VALVE TO BE SUPPLIED BY OTHERS.

LEGEND	
	RELIEF VALVE
	INTAKE FILTER
	AIR FILTER
	3 WAY VALVE
	CARBON FILTER
	BALL VALVE
	SOLENOID VALVE
	PRESSURE SWITCH
	REGULATOR
	SEPARATOR
	CHECK VALVE
	FLEX LINE
	HIGH TEMP SWITCH
	UNION

SYMBOL LEGEND		AUTOCAD REL2008 LT		DO NOT SCALE DRAWING FOR DIMENSIONS	
	= MINUS DRAFT		= ADDITIONAL CONTROL REQ'D	Drawings to conform to the current revision of the following ANSI standards	
	= PLUS DRAFT		= BRINELL HARDNESS	Y14.3 Multi and sectional view dsgs. Y14.5M Dimensioning and tolerancing	
TOLERANCES NOT SPECIFIED		INCH		Sheet 2 of 2	
.XX ±				SCALE 1:8	
.XXX ±					
<DEG. ±					
CONFIDENTIAL DISCLOSURE This drawing is the property of POWEREX, INC. of the SCOTT FETZER COMPANY and subject to return on demand. Its contents are confidential and must not be copied or submitted to outside parties for use or examination.					
DRAWN BY		CHECKED BY		APPROVED BY	
AEK		GES		DMS TZ	
6/3/09		6/3/09		6/3/09 6/3/09	
MATERIAL N/A					
PART NAME OILLESS DUPLEX TANKMOUNT FLOW SCHEMATIC					
DWG NO MTD0103X5				SIZE D	