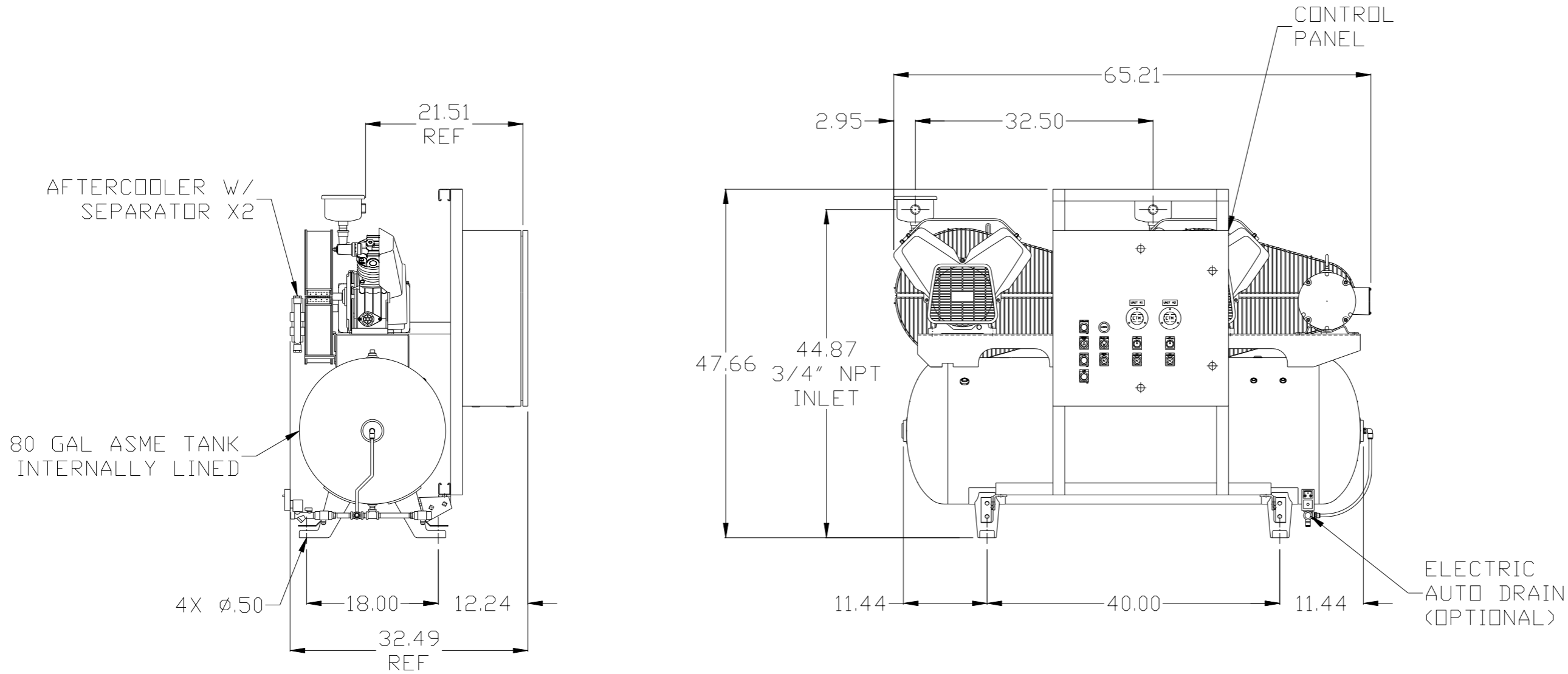


REV	ZONE	REVISION	DATE	ECN	NAME	CHKD
B-1	ALL	RELEASE TO PRODUCTION	7/27/06	21555	RSN	GES
C-1	2 C-3	ADDED MANUAL DRAIN	06/14/07	21669	DMS	GES
D-1	ALL	UPDATED BUILD & FLOW TO CURRENT STANDARDS	11/19/08	21907	AEK	GES
E-1	ALL	CHANGED INLET TO REFLECT CURRENT PRODUCTION	6/9/09	22127	AEK	GES
F-1	1 B3	UPDATED OUTLET LOCATION	7/26/10	22348	AEK	GES
G-1	1 B3	REMOVED INCORRECT OUTLET LOCATION	4/12/11	22546	AEK	GES
G-2	1 ALL	CORRECTED PANEL MOUNTING	7/15/11	22546	AEK	GES
H-1	2 C3	ADDED SNUBBER VALVE	2/20/12	22734	AEK	DMS
J-1	2 D5	REMOVED SNUBBER VALVE	02/03/16	PKEC0133	MJD	AEK



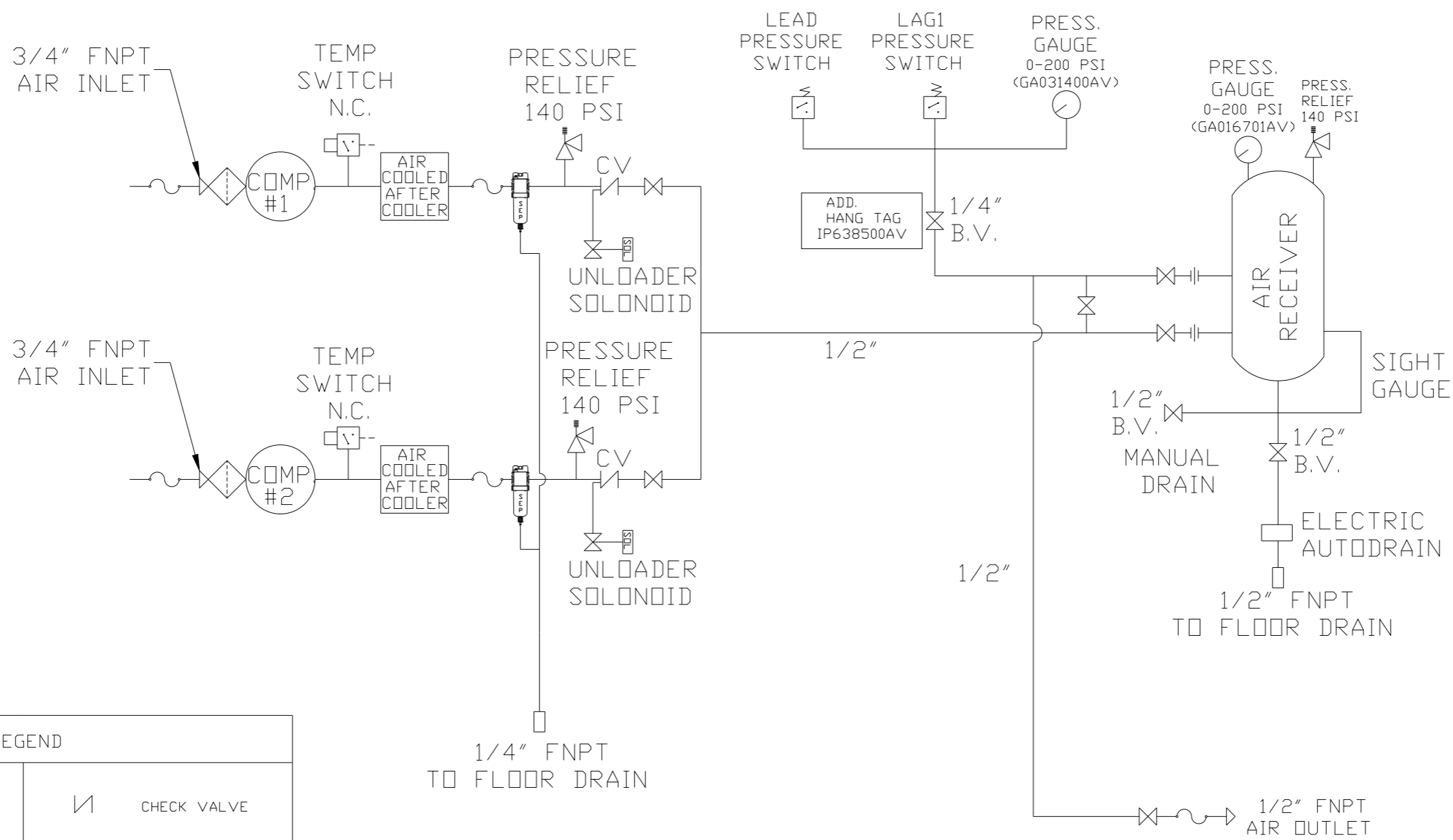
NOTE: SYSTEM DESIGNED IN COMPLIANCE WITH U.S. NFPA'99, LATEST EDITION

NOTE: A MINIMUM OF 24" CLEARANCE IS RECOMMENDED AROUND THE ENTIRE UNIT.

NOTE: BY-PASS PLUMBING NOT SHOWN FOR CLARITY.

<b>SYMBOL LEGEND</b> ⊖ = MINUS DRAFT ⊕ = PLUS DRAFT TOLERANCES NOT SPECIFIED .XX ± .XXX ± << DEG > ±		⊕ = ADDITIONAL CONTROL REQ'D HRC = BRINELL HARDNESS		Drawings to conform to the current revision of the following ANSI standards: Y14.3 Multi and sectional view dgs. Y14.5M Dimensioning and tolerancing	
AUTOCAD REL2000: INCH		DO NOT SCALE DRAWING FOR DIMENSIONS SCALE Sheet 1 of 2 1:8		<b>CONFIDENTIAL DISCLOSURE</b> This drawing is the property of POWEREX, INC. of the SCOTT FETZER COMPANY and subject to return on demand. Its contents are confidential and must not be copied or submitted to outside parties for use or examination.	
<b>DRAWN BY</b> RSN		<b>CHECKED BY</b> GES		<b>APPROVED BY</b> ENGINEERING MFG/MRKTG DMS JJ	
<b>MATERIAL</b> N/A		08/24/05		3/14/06 3/14/06 3/14/06	
<b>PART NAME</b> 2HP. DUPLEX 80 GALLON		 150 PRODUCTION DRIVE, HARRISON, OHIO 45030 Ph: 888-769-7979 FAX: (513) 367-3125		<b>DWG NO</b> MTD0203 <b>SIZE</b> D	

REV	ZONE	REVISION	DATE	ECN	NAME	CHKD
B-1	ALL	RELEASE TO PRODUCTION	7/27/06	21555	RSN	GES
C-1	2 C-3	ADDED MANUAL DRAIN	06/14/07	21669	DMS	GES
D-1	ALL	UPDATED BUILD & FLOW TO CURRENT STANDARDS	11/19/08	21907	AEK	GES
D-1	ALL	CHANGED INLET TO REFLECT CURRENT PRODUCTION	6/8/09	22127	AEK	GES
E-1	ALL	CHANGED INLET TO REFLECT CURRENT PRODUCTION	6/9/09	22127	AEK	GES
F-1	1 B3	UPDATED OUTLET LOCATION	7/26/10	22348	AEK	GES
G-1	1 B3	REMOVED INCORRECT OUTLET LOCATION	4/12/11	22546	AEK	GES
G-2	1 ALL	CORRECTED PANEL MOUNTING	7/15/11	22546	AEK	GES
H-1	2 C3	ADDED SNUBBER VALVE	2/20/12	22734	AEK	DMS
J-1	2 D5	REMOVED SNUBBER VALVE	02/03/16	PXEC0133	MJD	AEK



LEGEND	
	INTAKE FILTER
	CHECK VALVE
	DIVERTER VALVE
	BALL VALVE
	SEPERATOR
	FLEX JOINT
	SOLENOID VALVE

NOTES:  
 1) IF LAG 1 COMPRESSOR IS ENERGIZED ALARM WILL OCCUR.  
 2) PIPING TO THE INLET BY OTHERS AND TO BE PER NFPA99  
 3) INSTRUMENTS DOWN STREAM OF VALVE TO BE SUPPLIED BY OTHERS.

SYMBOL LEGEND		= ADDITIONAL CONTROL REQ'D		Drawings to conform to the current revision of the following ANSI standards	
= MINUS DRAFT		= BRINELL HARDNESS		Y14.3 Multi and sectional view dsgs. Y14.5M Dimensioning and tolerancing	
TOLERANCES NOT SPECIFIED		AUTOCAD REL2000:		DO NOT SCALE DRAWING FOR DIMENSIONS	
.XX ±		INCH		Sheet 2 of 2	
.XXX ±				SCALE 1:8	
<DEG> ±					
CONFIDENTIAL DISCLOSURE					
This drawing is the property of POWEREX, INC. of the SCOTT FETZER COMPANY and subject to return on demand. Its contents are confidential and must not be copied or submitted to outside parties for use or examination.					
DRAWN BY		CHECKED BY		APPROVED BY	
RSN		GES		DMS JJ	
08/24/05		3/14/06		3/14/06 3/14/06	
MATERIAL N/A					
PART NAME					
2HP. DUPLEX FLOW SCHEMATIC					
DWG NO				SIZE	
MTD0203				D	