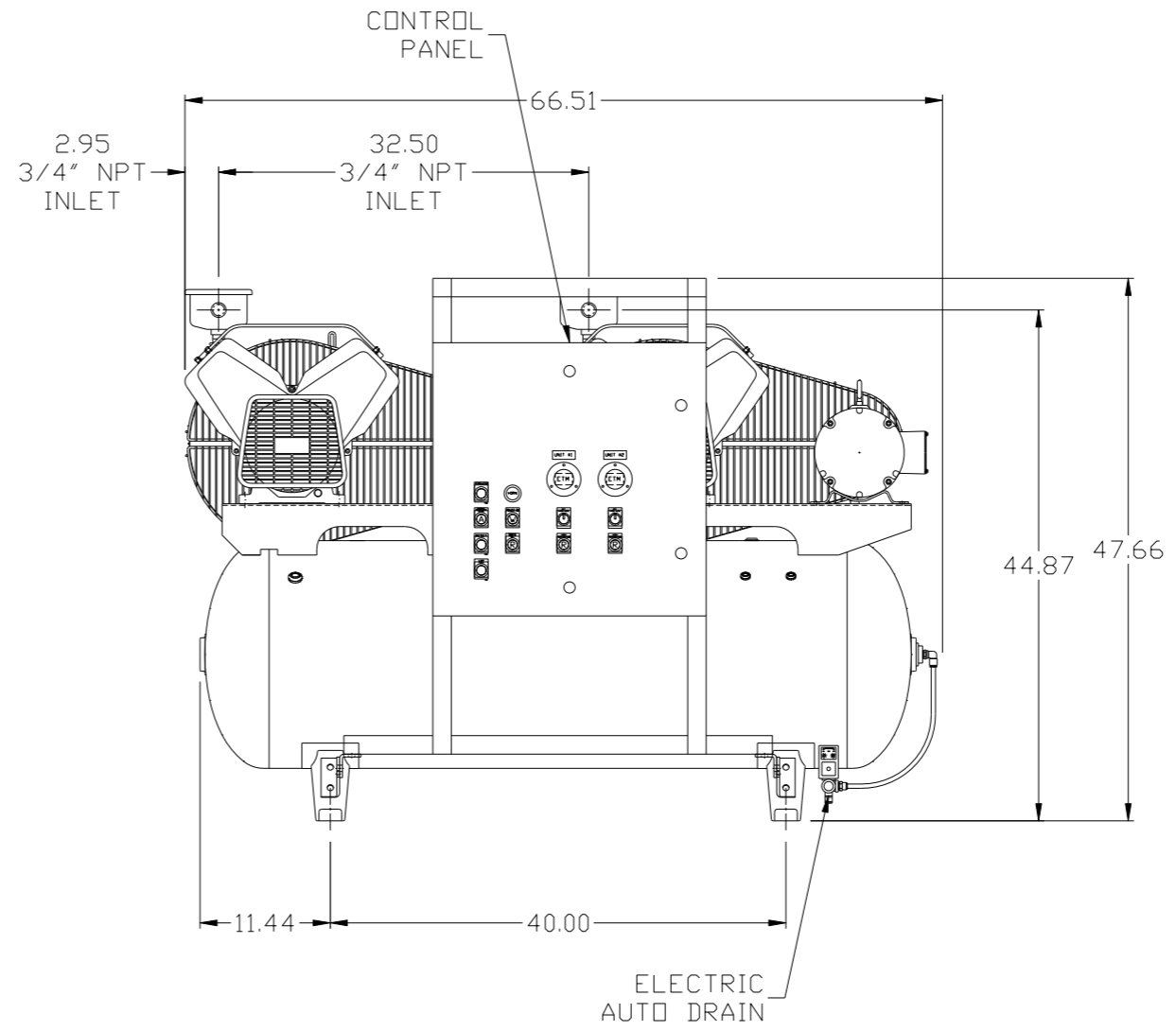
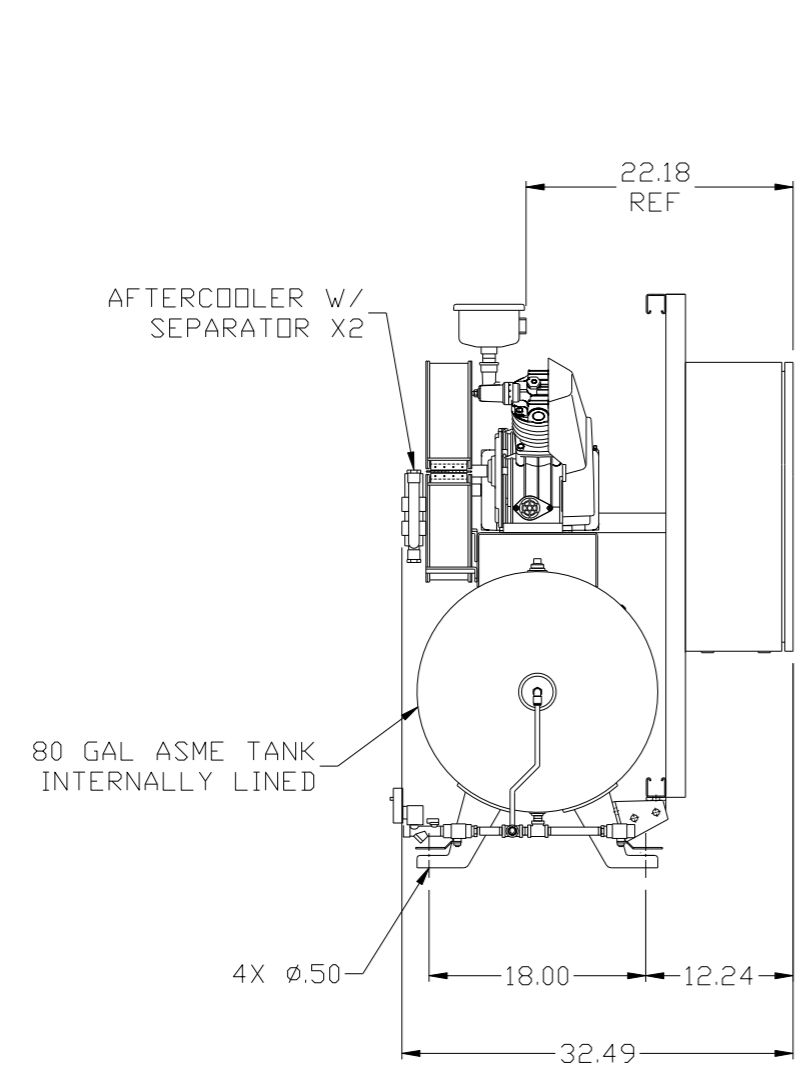


8 7 6 5 4 3 2 1

REV	ZONE	REVISION	DATE	ECN	NAME	CHKD
B-1	ALL	RELEASE TO PRODUCTION	7/26/06	21555	RSN	GES
C-1	2 C-3	ADDED MANUAL DRAIN	7/24/07	21669	DMS	GES
D-1	2 C2-C4	ADDED ISO VALVE & TANK GAUGE	1/25/08	21907	DMS	GES
E-1	ALL	UPDATED BUILD & FLOW TO CURRENT PRODUCTION	7/21/09	22127	AEK	DMS
F-1	1 ALL	REMOVED INCORRECT OUTLET	9/22/10	22348	AEK	GES
G-1	2 ALL	UPDATED/ADDED FLEX LINES	10/9/12	PXEC0009	AEK	DMS
H-1	2 C4	CORRECTED SNUBBER VALVE LOCATION	10/2/13	PXEC0030	AEK	GES
J-1	2 D4	REMOVED SNUBBER VALVE	02/03/16	PXEC0133	MJD	AEK



NOTE: SYSTEM DESIGNED IN COMPLIANCE WITH U.S. NFPA'99, LATEST EDITION

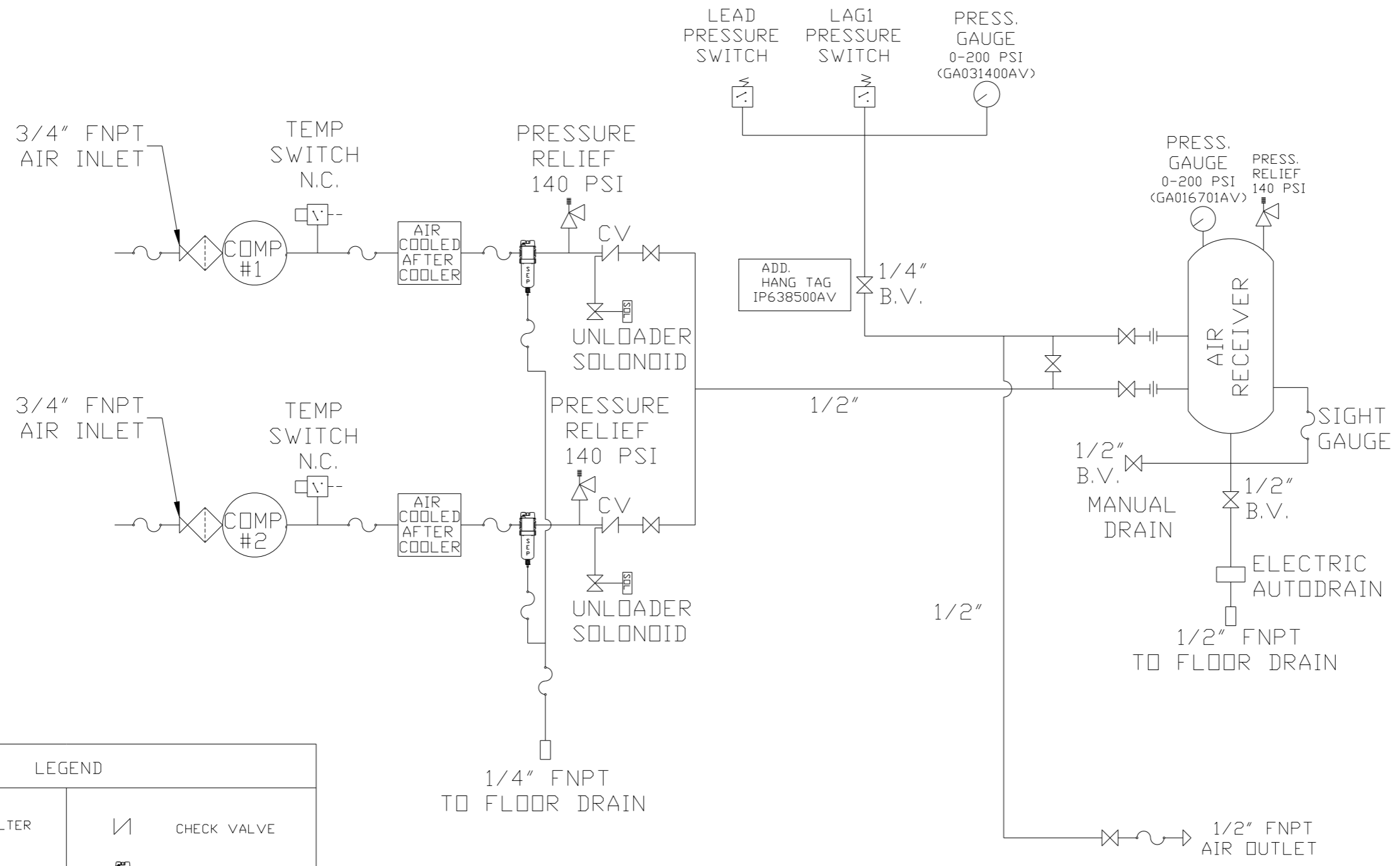
NOTE: A MINIMUM OF 24" CLEARANCE IS RECOMMENDED AROUND THE ENTIRE UNIT.

NOTE: BY-PASS PLUMBING NOT SHOWN FOR CLARITY.

SYMBOL LEGEND ⊖ = MINUS DRAFT ⊕ = PLUS DRAFT TOLERANCES NOT SPECIFIED: .XX ±, .XXX ±, <<DEG> ±		⊕ = ADDITIONAL CONTROL REQ'D HRC = BRINELL HARDNESS		Drawings to conform to the current revision of the following ANSI standards: Y14.3 Multi and sectional view dsgs. Y14.5M Dimensioning and tolerancing	
AUTOCAD REL2000: INCH		DO NOT SCALE DRAWING FOR DIMENSIONS Sheet 1 of 2 SCALE: 1:8		CONFIDENTIAL DISCLOSURE This drawing is the property of POWEREX, INC. of the SCOTT FETZER COMPANY and subject to return on demand. Its contents are confidential and must not be copied or submitted to outside parties for use or examination.	
DRAWN BY: RSN		CHECKED BY: GES		APPROVED BY: DMS JJ	
MATERIAL: N/A		8/24/05 3/14/06		3/14/06 3/14/06	
PART NAME: 3HP DUPLEX RECIP 80 GAL TANK MOUNT		 150 PRODUCTION DRIVE, HARRISON, OHIO 45030 Ph: 888-769-7979 FAX: (513) 367-3125		DWG NO: MTD0303	
				SIZE: D	

8 7 6 5 4 3 2 1

REV	ZONE	REVISION	DATE	ECN	NAME	CHKD
B-1	ALL	RELEASE TO PRODUCTION	7/26/06	21555	RSN	GES
C-1	2 C-3	ADDED MANUAL DRAIN	7/24/07	21669	DMS	GES
D-1	2 C2-C4	ADDED ISD VALVE & TANK GAUGE	1/25/08	21907	DMS	GES
E-1	ALL	UPDATED BUILD & FLOW TO CURRENT PRODUCTION	7/21/09	22127	AEK	DMS
F-1	1 ALL	REMOVED INCORRECT OUTLET	9/22/10	22348	AEK	GES
G-1	2 ALL	UPDATED/ADDED FLEX LINES	10/9/12	PXEC0009	AEK	DMS
H-1	2 C4	CORRECTED SNUBBER VALVE LOCATION	10/2/13	PXEC0030	AEK	GES
J-1	2 D4	REMOVED SNUBBER VALVE	02/03/16	PXEC0133	MJD	AEK



LEGEND	
	INTAKE FILTER
	DIVERTER VALVE
	BALL VALVE
	CHECK VALVE
	SEPERATOR
	FLEX LINE
	SOLENOID VALVE

- NOTES:
- 1) IF LAG 1 COMPRESSOR IS ENERGIZED ALARM WILL OCCUR.
 - 2) PIPING TO THE INLET BY OTHERS AND TO BE PER NFPA99
 - 3) INSTRUMENTS DOWN STREAM OF SOURCE VALVE TO BE SUPPLIED BY OTHERS.

SYMBOL LEGEND ⊖ = MINUS DRAFT ⊕ = PLUS DRAFT ⊕ = ADDITIONAL CONTROL REQ'D ⊕ = BRINELL HARDNESS		Drawings to conform to the current revision of the following ANSI standards: Y14.3 Multi and sectional view dgs. Y14.5M Dimensioning and tolerancing	
TOLERANCES NOT SPECIFIED: .XX ± .XXX ± \angle DEG ±		AUTOCAD REL2000: INCH DO NOT SCALE DRAWING FOR DIMENSIONS Sheet 1 of 2 SCALE 1:8	
CONFIDENTIAL DISCLOSURE This drawing is the property of POWEREX, INC. of the SCOTT FETZER COMPANY and subject to return on demand. Its contents are confidential and must not be copied or submitted to outside parties for use or examination.			
DRAWN BY: RSN 8/24/05		CHECKED BY: GES 3/14/06	
APPROVED BY: DMS 3/14/06		APPROVED BY: JJJ 3/14/06	
MATERIAL: N/A		POWEREX 150 PRODUCTION DRIVE, HARRISON, OHIO 45030 Ph: 888-769-7979 FAX: (513) 367-3125	
PART NAME: DUPLEX RECIP TNK MNT FLOW SCHEMATIC		DWG NO: MTD0303 SIZE: D	