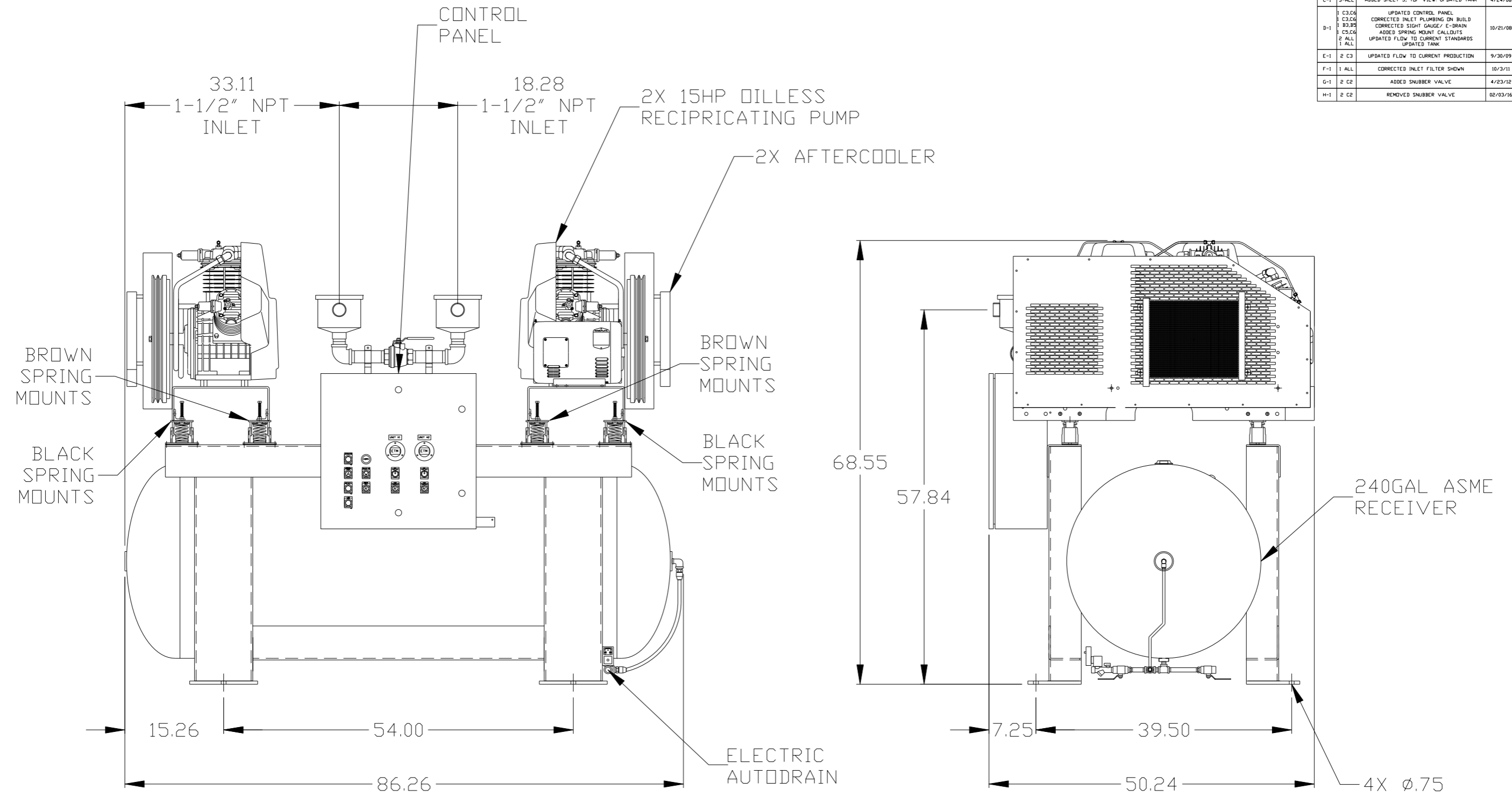


REV	ZONE	REVISION	DATE	ECN	NAME	CHKD	
B-1	ALL	RELEASE TO PRODUCTION	7/27/06	21555	RSN	GES	
C-1	3-ALL	ADDED SHEET 3, TOP VIEW, UPDATED TANK	4/24/08	21907	GES	DMS	
D-1	1 2 3 4 5 6 7 8 9 10 11 12 13 14 15 16 17 18 19 20 21 22 23 24 25 26 27 28 29 30 31 32 33 34 35 36 37 38 39 40 41 42 43 44 45 46 47 48 49 50 51 52 53 54 55 56 57 58 59 60 61 62 63 64 65 66 67 68 69 70 71 72 73 74 75 76 77 78 79 80 81 82 83 84 85 86 87 88 89 90 91 92 93 94 95 96 97 98 99 100	1 2 3 4 5 6 7 8 9 10 11 12 13 14 15 16 17 18 19 20 21 22 23 24 25 26 27 28 29 30 31 32 33 34 35 36 37 38 39 40 41 42 43 44 45 46 47 48 49 50 51 52 53 54 55 56 57 58 59 60 61 62 63 64 65 66 67 68 69 70 71 72 73 74 75 76 77 78 79 80 81 82 83 84 85 86 87 88 89 90 91 92 93 94 95 96 97 98 99 100	UPDATED CONTROL PANEL CORRECTED INLET PLUMBING ON BUILD CORRECTED SIGHT GAUGE/ E-BRAIN ADDED SPRING MOUNT CALLEUTS UPDATED FLOW TO CURRENT STANDARDS UPDATED TANK	10/21/08	22039	AEK	GES
E-1	2	C3	UPDATED FLOW TO CURRENT PRODUCTION	9/30/09	22127	AEK	GES
F-1	1	ALL	CORRECTED INLET FILTER SHOWN	10/3/11	22546	AEK	GES
G-1	2	C2	ADDED SNUBBER VALVE	4/23/12	22734	AEK	GES
H-1	2	C2	REMOVED SNUBBER VALVE	02/03/16	PXEC0133	MJD	AEK



NOTE: BYPASS PLUMBING NOT SHOWN FOR CLARITY

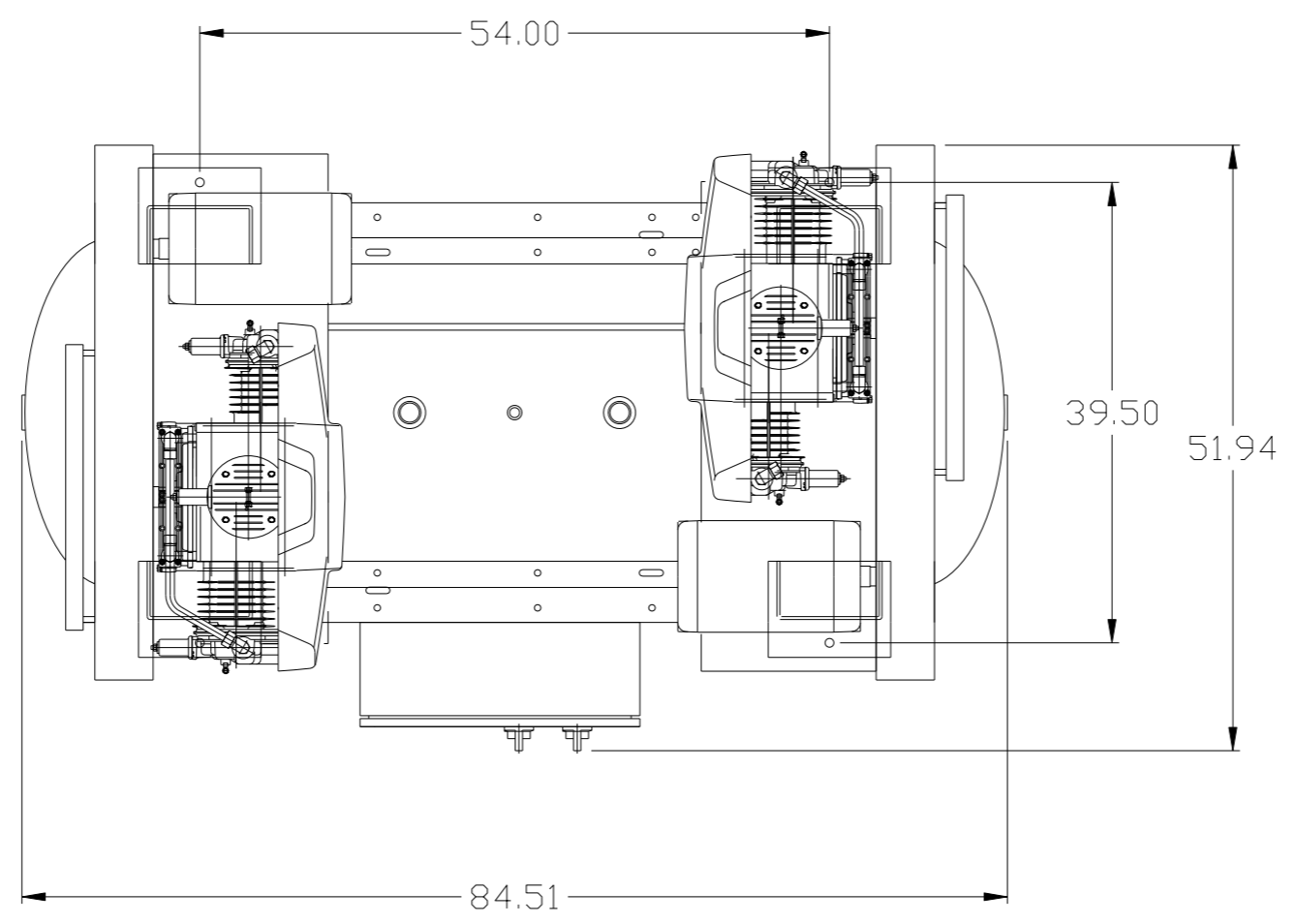
NOTE: A MINIMUM OF 24" CLEARANCE IS RECOMMENDED AROUND THE ENTIRE UNIT.

NOTE: SYSTEM DESIGNED IN COMPLIANCE WITH U.S. NFPA'99, LATEST EDITION

SYMBOL LEGEND ⊖ = MINUS DRAFT ⊕ = PLUS DRAFT ⊕ = ADDITIONAL CONTROL REQ'D HRC = BRINELL HARDNESS		Drawings to conform to the current revision of the following ANSI standards: Y14.3 Multi and sectional view dgs. Y14.5M Dimensioning and tolerancing	
TOLERANCES NOT SPECIFIED .XX ± .XXX ± <<DEG> ±		AUTOCAD REL2000 INCH	
CONFIDENTIAL DISCLOSURE This drawing is the property of POWEREX, INC. of the SCOTT FETZER COMPANY and subject to return on demand. Its contents are confidential and must not be copied or submitted to outside parties for use or examination.		DO NOT SCALE DRAWING FOR DIMENSIONS Sheet 1 of 3 SCALE 1:8	
MATERIAL N/A		DRAWN BY GES	
PART NAME 15HP. OILLESS 240 GAL. DUPLEX		CHECKED BY GES	
		APPROVED BY ENGINEERING MFG/MKTG GES DB	
		6/17/05 6/17/05 6/17/05 6/17/05	
		150 PRODUCTION DRIVE, HARRISON, OHIO 45030 Ph: 888-769-7979 FAX: (513) 367-3125	
		DWG NO MTD1506	
		SIZE D	

8 7 6 5 4 3 2 1

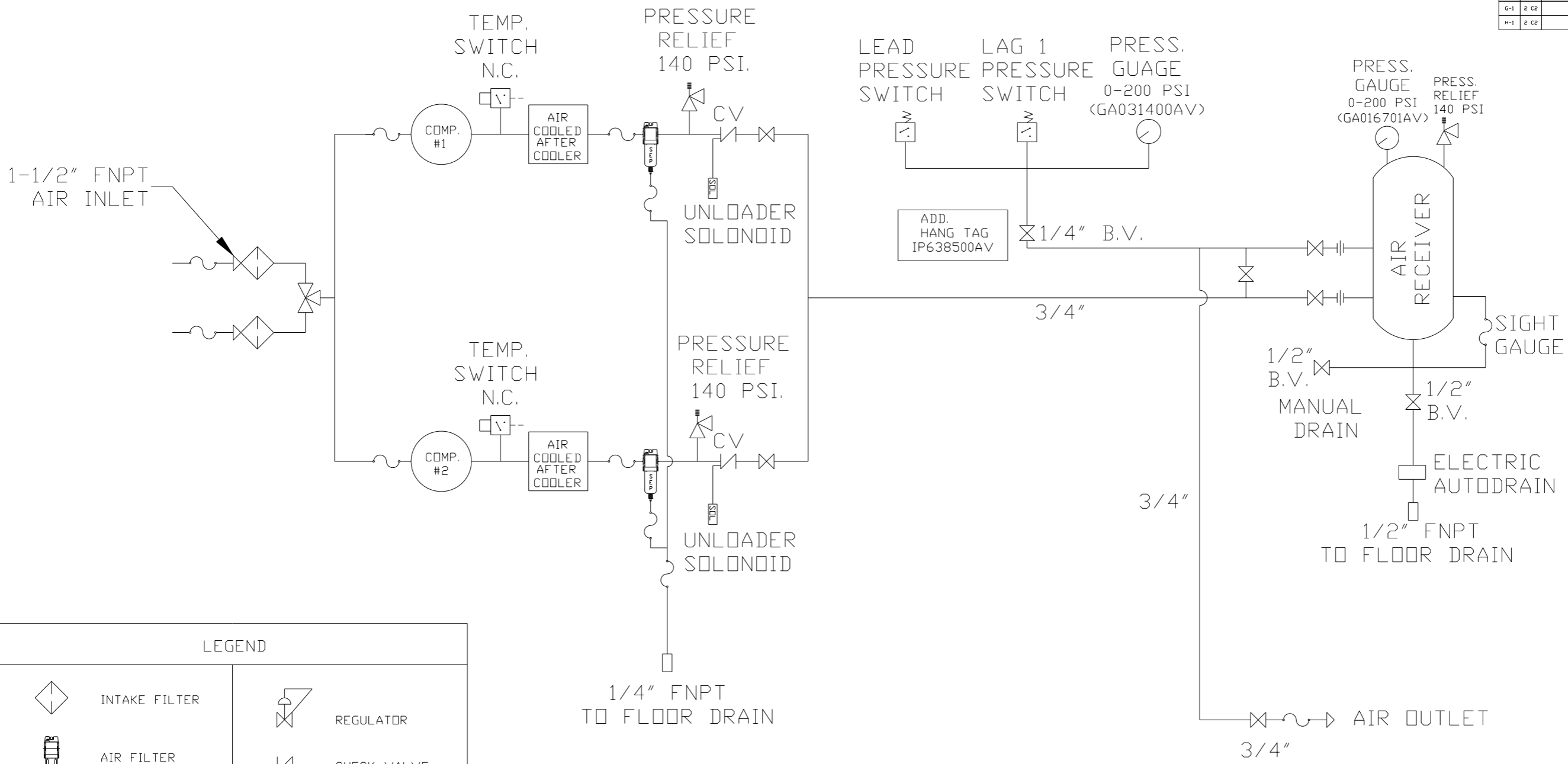
REV	ZONE	REVISION	DATE	ECN	NAME	CHKD
C-1	ALL	ADDED SHEET 3, TOP VIEW, UPDATED TANK	4/24/08	21907	GES	DMS
D-1	1 C3,C6 1 E3,B5 1 E5,C6 2 ALL 1 ALL	UPDATED CONTROL PANEL CORRECTED INLET PLUMBING ON BUILD CORRECTED SIGHT GAUGE/ E-BRAIN ADDED SPRING MOUNT CALLOUTS UPDATED FLOW TO CURRENT STANDARDS UPDATED TANK	10/21/08	22039	AEK	GES
E-1	2 C3	UPDATED FLOW TO CURRENT PRODUCTION	9/30/09	22127	AEK	GES
F-1	1 ALL	CORRECTED INLET FILTER SHOWN	10/3/11	22546	AEK	GES
G-1	2 C2	ADDED SNUBBER VALVE	4/23/12	22734	AEK	GES
H-1	2 C2	REMOVED SNUBBER VALVE	02/03/16	PXEC0133	MJD	AEK



SYMBOL LEGEND ⊖ = MINUS DRAFT ⊕ = PLUS DRAFT HRC = BRINELL HARDNESS		= ADDITIONAL CONTROL REQ'D = BRINELL HARDNESS		Drawings to conform to the current revision of the following ANSI standards: Y14.3 Multi and sectional view dgs. Y14.5M Dimensioning and tolerancing	
TOLERANCES NOT SPECIFIED .XX ± .XXX ± <DEG> ±		AUTOCAD REL2000 INCH		DO NOT SCALE DRAWING FOR DIMENSIONS Sheet 3 of 3 SCALE 1:8	
CONFIDENTIAL DISCLOSURE This drawing is the property of POWEREX, INC. of the SCOTT FETZER COMPANY and subject to return on demand. Its contents are confidential and must not be copied or submitted to outside parties for use or examination.					
DRAWN BY GES		CHECKED BY DMS		APPROVED BY ENGINEERING MFG/MRKTG GES TH	
DATE 4/24/08		DATE 4/24/08		DATE 4/24/08 4/24/08	
MATERIAL N/A		 150 PRODUCTION DRIVE, HARRISON, OHIO 45030 Ph 888-769-7979 FAX (513) 367-3125			
PART NAME 15HP. DILLESS 240 GAL. DUPLEX		DWG NO MTD1506		SIZE D	

8 7 6 5 4 3 2 1

REV	ZONE	REVISION	DATE	ECN	NAME	CHKD
B-1	ALL	RELEASE TO PRODUCTION	7/27/06	21555	RSN	GES
C-1	3-ALL	ADDED SHEET 3, TOP VIEW, UPDATED TANK	4/24/08	21907	GES	DMS
D-1	1 C3,C6 1 C3,C6 1 C3,C6 2 ALL 1 ALL	UPDATED CONTROL PANEL CORRECTED INLET PIPING ON BUILD CORRECTED SIGHT GAUGE/ E-BRAIN ADDED SPRING MOUNT CALLEUTS UPDATED FLOW TO CURRENT STANDARDS UPDATED TANK	10/21/08	22039	AEK	GES
E-1	2 C3	UPDATED FLOW TO CURRENT PRODUCTION	9/30/09	22127	AEK	GES
F-1	1 ALL	CORRECTED INLET FILTER SHOWN	10/3/11	22546	AEK	GES
G-1	2 C2	ADDED SNUBBER VALVE	4/23/12	22734	AEK	GES
H-1	2 C2	REMOVED SNUBBER VALVE	02/03/16	PXEC0133	MJD	AEK



LEGEND	
	INTAKE FILTER
	AIR FILTER
	DIVERTER VALVE
	BALL VALVE
	CARBON FILTER
	REGULATOR
	CHECK VALVE
	SEPERATOR
	FLEX JOINT
	SOLENOID VALVE

- NOTES:
- 1) IF LAG 1 COMPRESSOR IS ENERGIZED ALARM WILL OCCUR.
 - 2) PIPING TO THE INLET BY OTHERS AND TO BE PER NFPA99
 - 3) INSTRUMENTS DOWN STREAM OF SOURCE VALVE TO BE SUPPLIED BY OTHERS.

SYMBOL LEGEND		= ADDITIONAL CONTROL REQ'D		Drawings to conform to the current revision of the following ANSI standards:	
⊖ = MINUS DRAFT		= BRINELL HARDNESS		Y14.3 Multi and sectional view dgs. Y14.5M Dimensioning and tolerancing	
⊕ = PLUS DRAFT		AUTOCAD REL2000:		DO NOT SCALE DRAWING FOR DIMENSIONS	
.XX ±		INCH		Sheet 2 of 3	
.XXX ±				SCALE 1:8	
< (DEG) ±					
CONFIDENTIAL DISCLOSURE This drawing is the property of POWEREX, INC. of the SCOTT FEITZER COMPANY and subject to return on demand. Its contents are confidential and must not be copied or submitted to outside parties for use or examination.					
DRAWN BY		CHECKED BY		APPROVED BY	
GES		GES		MFG/MKTG	
6/17/05		6/17/05		6/17/05 6/17/05	
MATERIAL		N/A		POWEREX	
PART NAME		15HP. DUPLEX		150 PRODUCTION DRIVE, HARRISON, OHIO 45030 Ph: 888-769-7979 FAX: (513) 367-3125	
FLOW SCHEMATIC		DWG NO		SIZE	
		MTD1506		D	