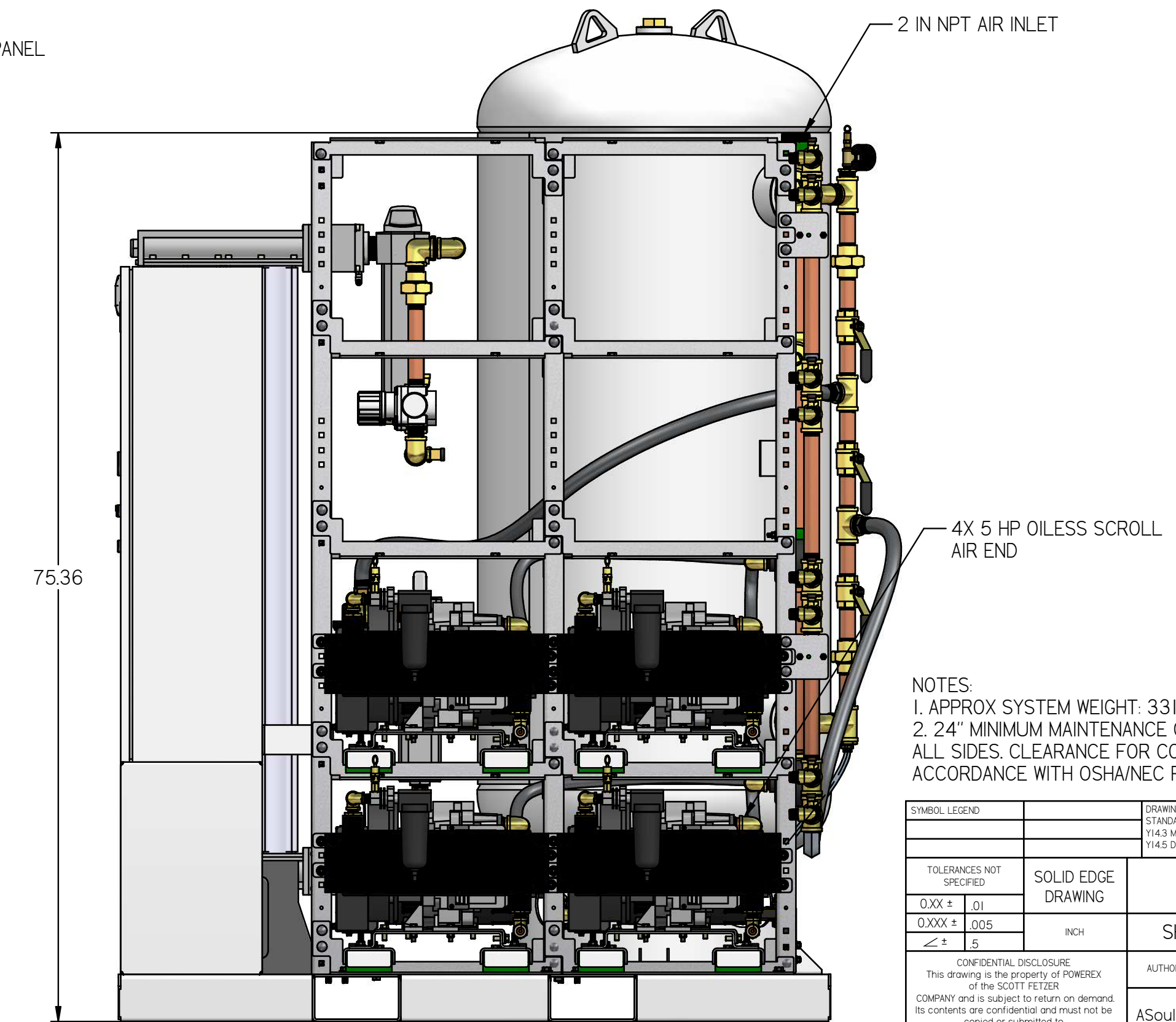
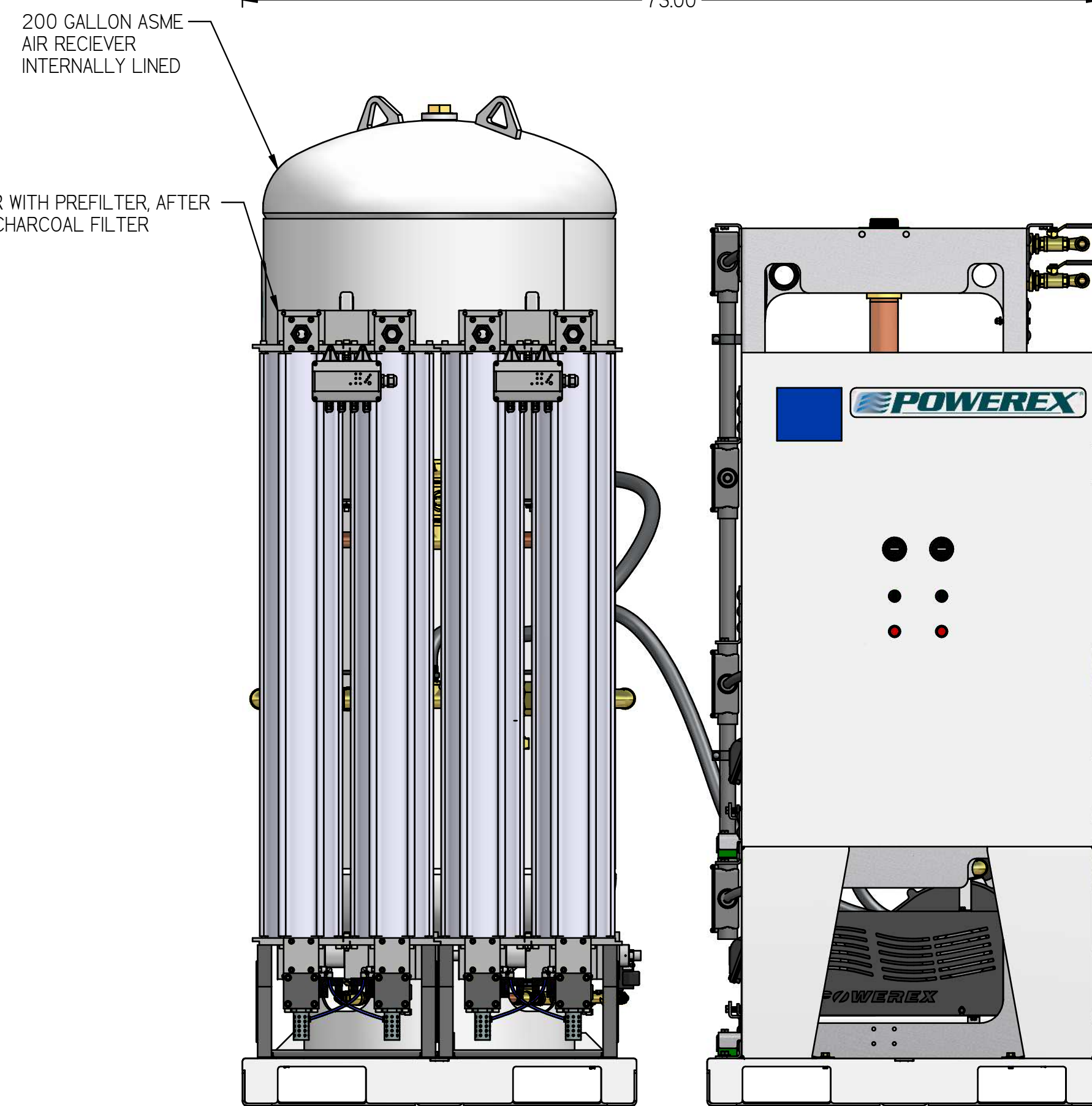
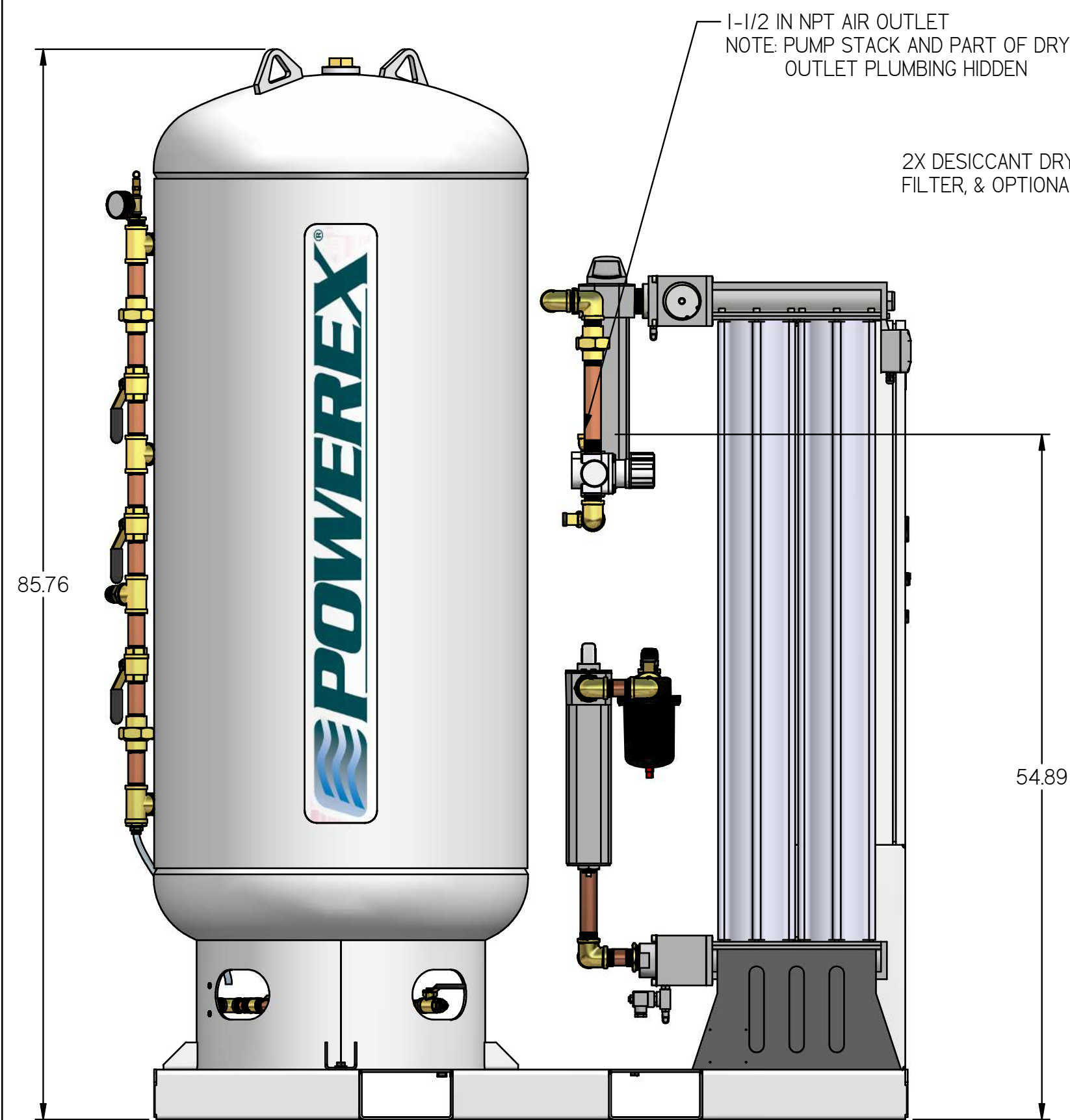
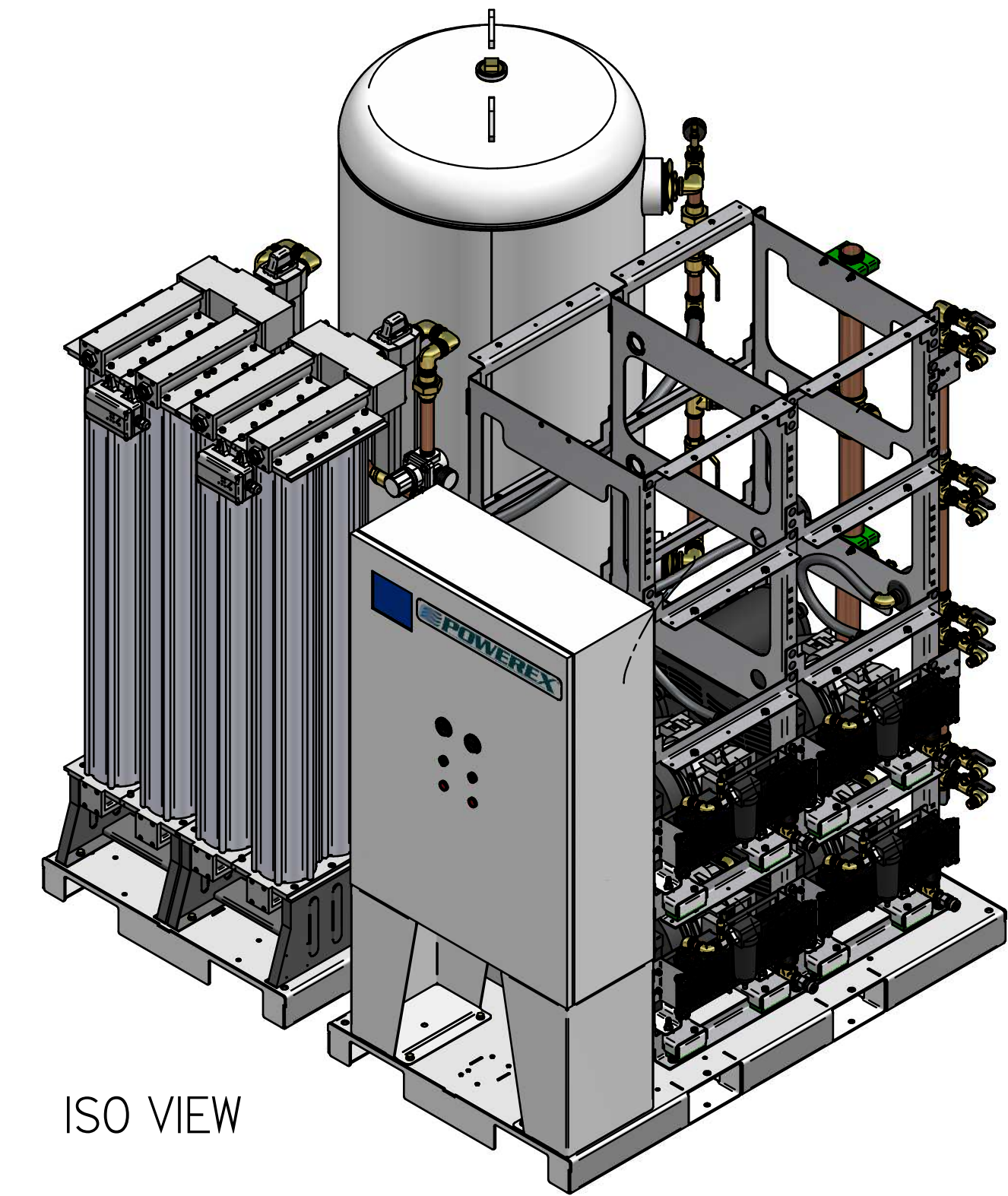
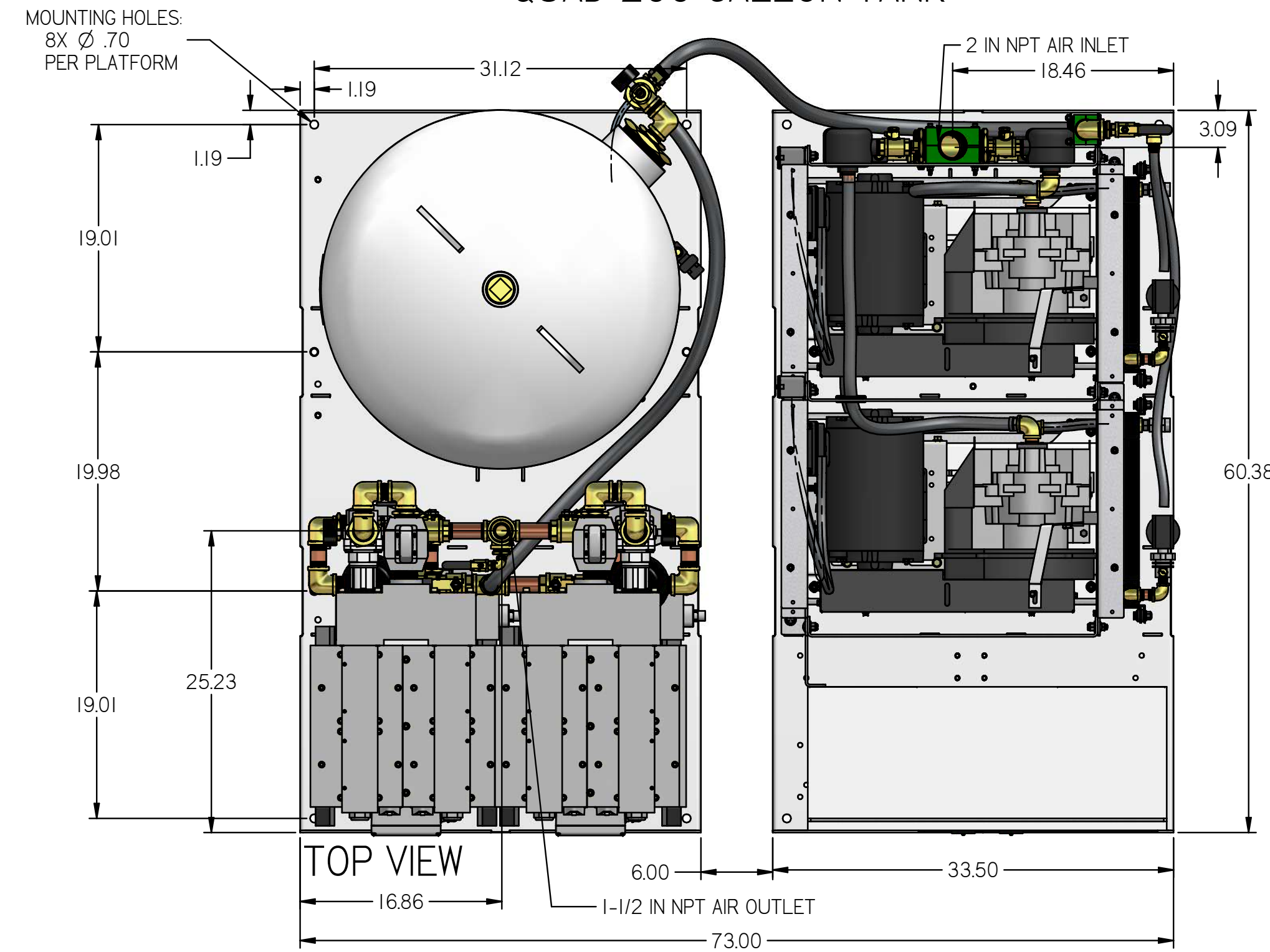


LSD10A5-EX4

LAB OPEN SCROLL 10 HP
 DUPLEX EXPANDABLE TO
 QUAD 200 GALLON TANK

REVISION NOTES		
DESCRIPTION	ECN	PR/NOR
PRODUCTION RELEASE	PXEC0169	N/A



- NOTES:
- APPROX SYSTEM WEIGHT: 3317 LB
 - 24" MINIMUM MAINTENANCE CLEARANCE RECOMMENDED ALL SIDES. CLEARANCE FOR CONTROL PANEL SHALL BE IN ACCORDANCE WITH OSHA/NEC REQUIREMENTS

SYMBOL LEGEND		DRAWINGS TO CONFORM TO CURRENT REVISION OF THE FOLLOWING ANSI STANDARDS:		
TOLERANCES NOT SPECIFIED	SOLID EDGE DRAWING	1143 MULTI AND SECTIONAL VIEW DIMS	1145 DIMENSIONING AND TOLERANCING	
0.XXX ± .01	DRAWING	DO NOT SCALE DRAWING FOR DIMENSIONS		
0.XXX ± .005		SHEET 1 OF 4	SCALE 1:10	
CONFIDENTIAL DISCLOSURE This drawing is the property of POWEREX of the SCOTT FETTER COMPANY and is subject to return on demand. Its contents are confidential and must not be copied or submitted to outside parties for use or examination.		AUTHOR	ORIGINATION DATE	APPROVALS ON FILE IN PLM
MATERIAL: SEE PART DRAWINGS		ASoulek	11/5/2018	
DRAWING NUMBER: LSD10A5-EX4		REVISION	SIZE	
		B	D	

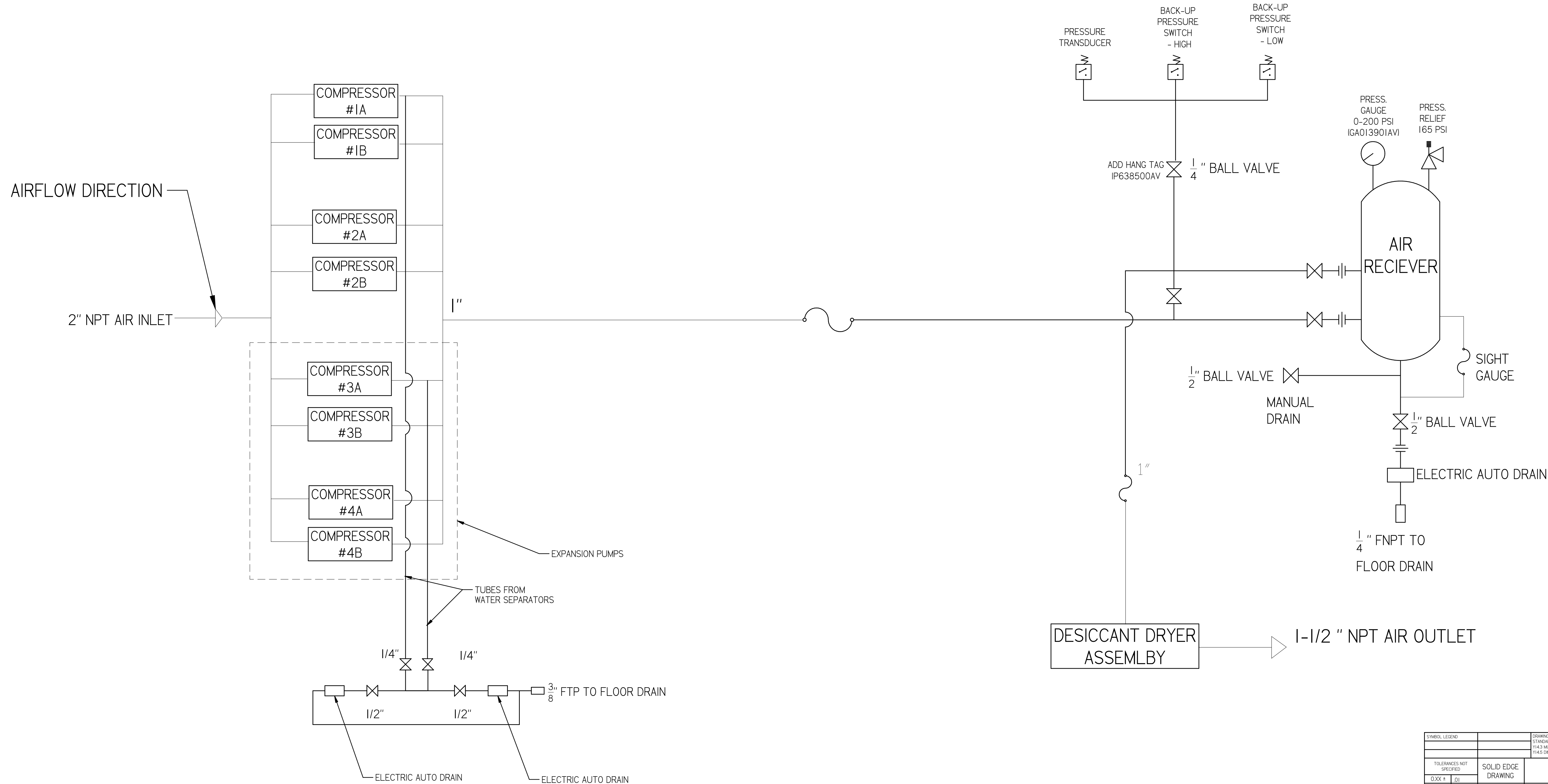


LSD10A5-EX4

LAB OPEN SCROLL 10 HP
 DUPLEX EXPANDABLE TO
 QUAD 200 GALLON TANK

FLOW DIAGRAM

REVISION NOTES		
DESCRIPTION	ECN	PR/NOR
PRODUCTION RELEASE	PXECO169	N/A



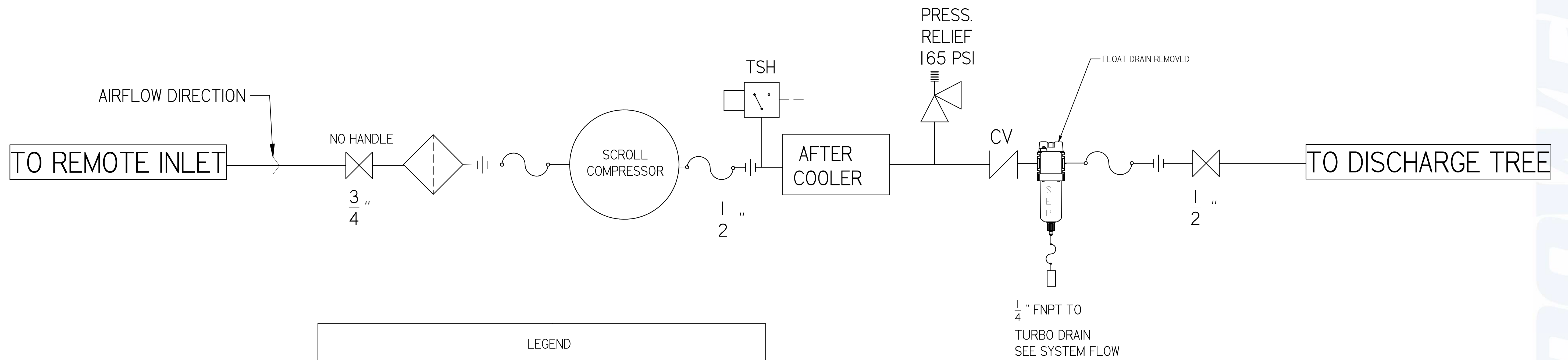
SYMBOL LEGEND		DRAWINGS TO CONFORM TO CURRENT REVISION OF THE FOLLOWING ANSI STANDARDS:	
		Y14.3 MULTI AND SECTIONAL VIEW DIMS	
		Y14.5 DIMENSIONING AND TOLERANCING	
TOLERANCES NOT SPECIFIED	SOLID EDGE DRAWING	DO NOT SCALE DRAWING FOR DIMENSIONS	
0.001 ± .01	INCH	SHEET 2 OF 4	SCALE 1:1
0.005 ± .005			
<small>CONFIDENTIAL DISCLOSURE</small> This drawing is the property of POWEREX of the SCOTT FETTER COMPANY and is subject to return on demand. Its contents are confidential and must not be copied or submitted to outside parties for use or examination.		AUTHOR	APPROVALS ON FILE IN PLM
FROM: 716117 MATERIAL: SEE PART DRAWINGS		ASoulek	11/5/2018
DRAWING NUMBER: LSD10A5-EX4 REVISION: B SIZE: D			

REVISION NOTES		
DESCRIPTION	ECN	PR/NOR
PRODUCTION RELEASE	PXECO169	N/A

LSD10A5-EX4

LAB OPEN SCROLL 10 HP
 DUPLEX EXPANDABLE TO
 QUAD 200 GALLON TANK

LAB COMPRESSOR FLOW DIAGRAM



LEGEND	
	RELIEF VALVE
	INTAKE FILTER
	AIR FILTER
	3 WAY VALVE
	CARBON FILTER
	BALL VALVE
	PRESSURE SWITCH
	REGULATOR
	SEPARATOR
	CHECK VALVE
	FLEX LINE
	TSH HIGH TEMP SWITCH

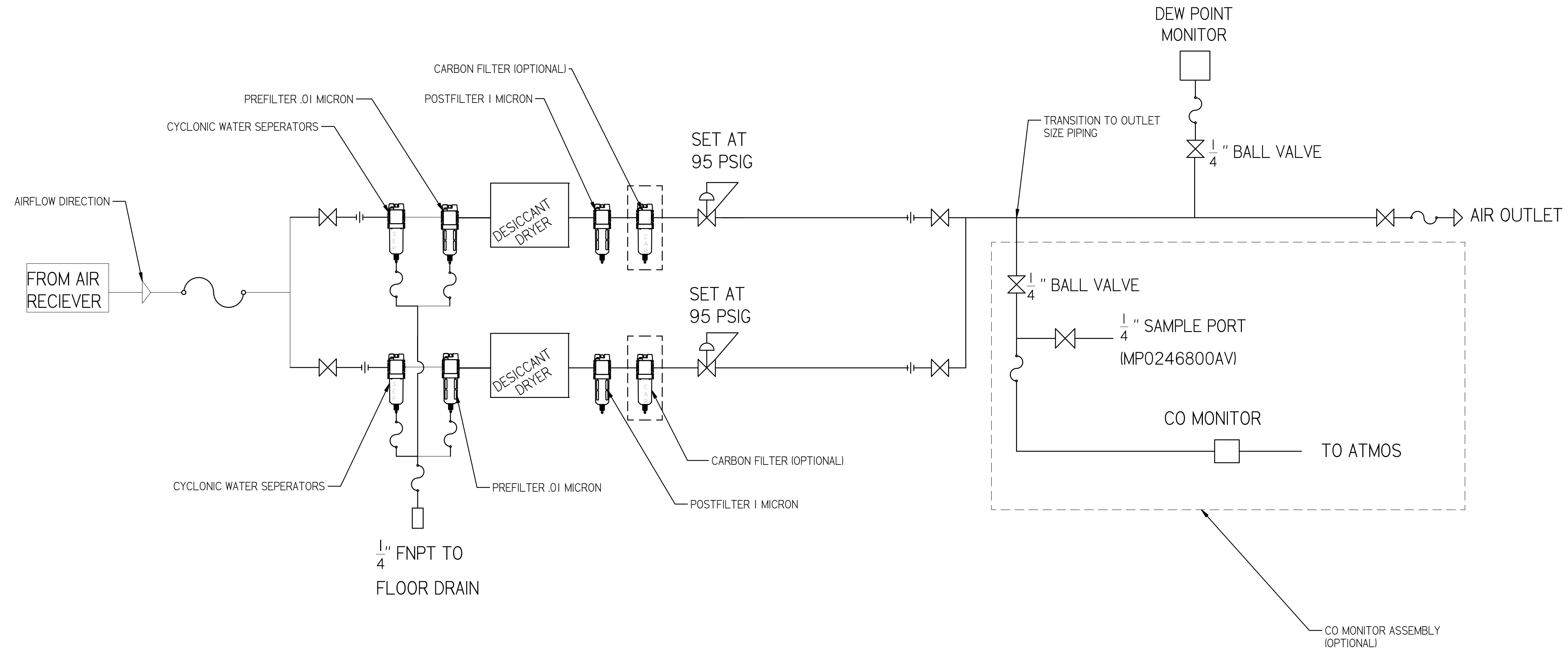
SYMBOL LEGEND		DRAWINGS TO CONFORM TO CURRENT REVISION OF THE FOLLOWING ANSI STANDARDS:	
TOLERANCES NOT SPECIFIED:		1:4:3 MULTI AND SECTIONAL VIEW DIMS	
0.001 ± 0.01		1:4:3 DIMENSIONING AND TOLERANCING	
0.005 ± 0.005		SHEET 3 OF 4	
1/8" ± 0.005		SCALE 1:1	
CONFIDENTIAL DISCLOSURE This drawing is the property of POWEREX of the SCOTT FETTER COMPANY and is subject to return on demand. Its contents are confidential and must not be copied or submitted to outside parties for use or examination.		AUTHOR	APPROVALS ON FILE IN PLM
716117		ASoulek	11/5/2018
MATERIAL: SEE PART DRAWINGS		 150 PRODUCTION DRIVE, HARRISON OH 45030 (888) 768-7079	
DESCRIPTION: LAB OPEN SCROLL 10 HP DUPLEX EXPANDABLE TO QUAD 200 GALLON TANK		DRAWING NUMBER: LSD10A5-EX4	REVISION: B D

REVISION NOTES		
DESCRIPTION	ECN	PR/NOR
PRODUCTION RELEASE	PXECO169	N/A

LSD10A5-EX4

LAB OPEN SCROLL 10 HP
 DUPLEX EXPANDABLE TO
 QUAD 200 GALLON TANK

LAB DRYER FLOW DIAGRAM



PIPE SIZE CHART		
PUMP COUNT	DRYER PLUMBING SIZE	OUTLET PIPE SIZE
2	1/2"	1/2"
3	1/2"	1"
4	1"	1-1/4"
6	1"	1-1/2"
8	1"	1-1/2"
9	1"	1-1/2"
12	1-1/2"	2"
15	1-1/2"	2"
18	1-1/2"	2"

SYMBOL LEGEND		DRAWINGS TO CONFORM TO CURRENT REVISION OF THE FOLLOWING ANSI STANDARDS: Y14.3 MULTI AND SECTIONAL VIEW DIMS Y14.5 DIMENSIONING AND TOLERANCING		
TOLERANCES NOT SPECIFIED	SOLID EDGE DRAWING	DO NOT SCALE DRAWING FOR DIMENSIONS		
0.XXX ± .01		SHEET 4 OF 4	SCALE 1:1	
0.XXX ± .005				
± .5	INCH			
CONFIDENTIAL DISCLOSURE This drawing is the property of POWEREX of the SCOTT FETTER COMPANY and is subject to return on demand. Its contents are confidential and must not be copied or submitted to outside parties for use or examination.		AUTHOR	ORIGINATION DATE	APPROVALS ON FILE IN PLM
FROM ID: 716117 MATERIAL: SEE PART DRAWINGS		ASoulek	11/5/2018	
DESCRIPTION: LAB OPEN SCROLL 10 HP DUPLEX EXPANDABLE TO QUAD 200 GALLON TANK		DRAWING NUMBER: LSD10A5-EX4	REVISION: B	SIZE: D

