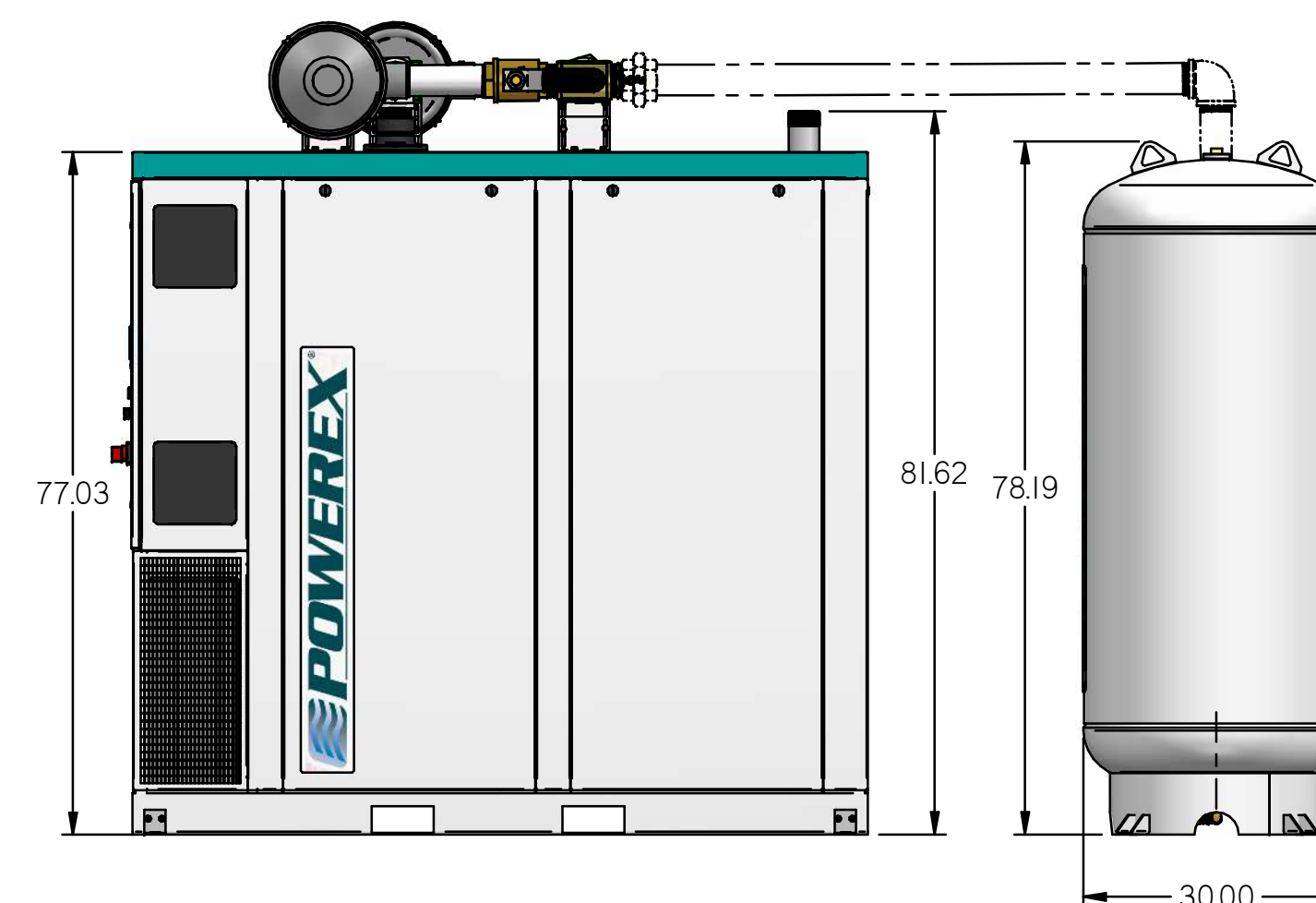
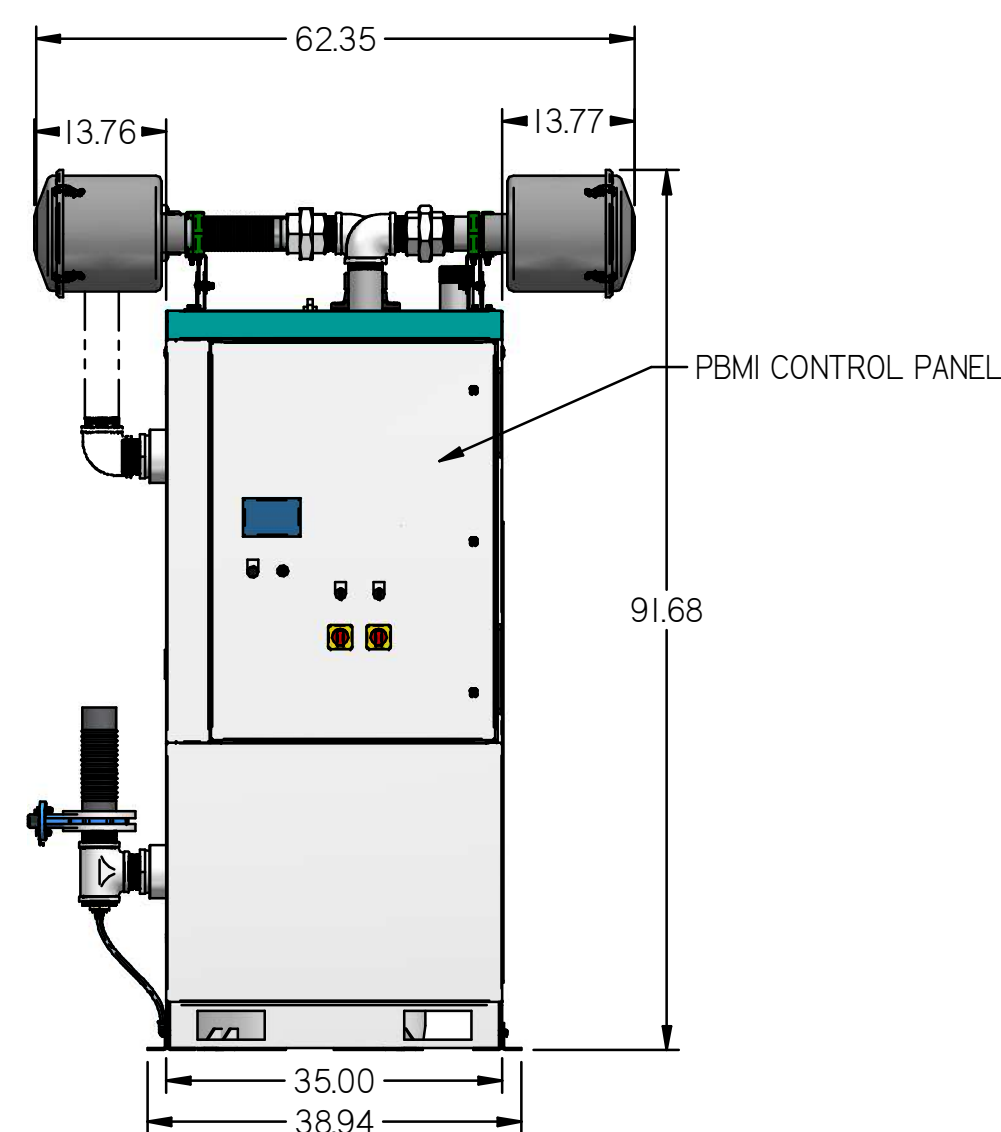
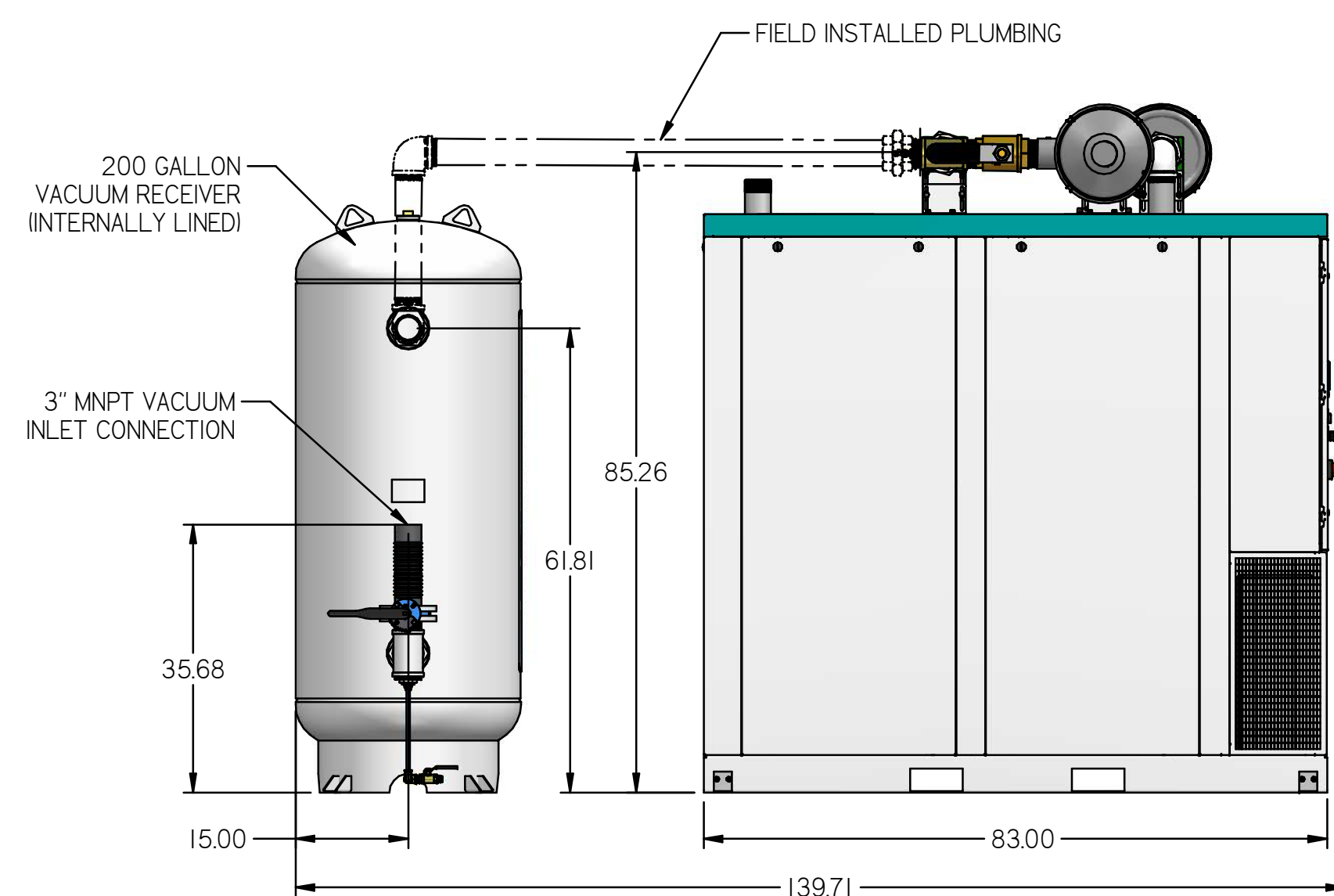
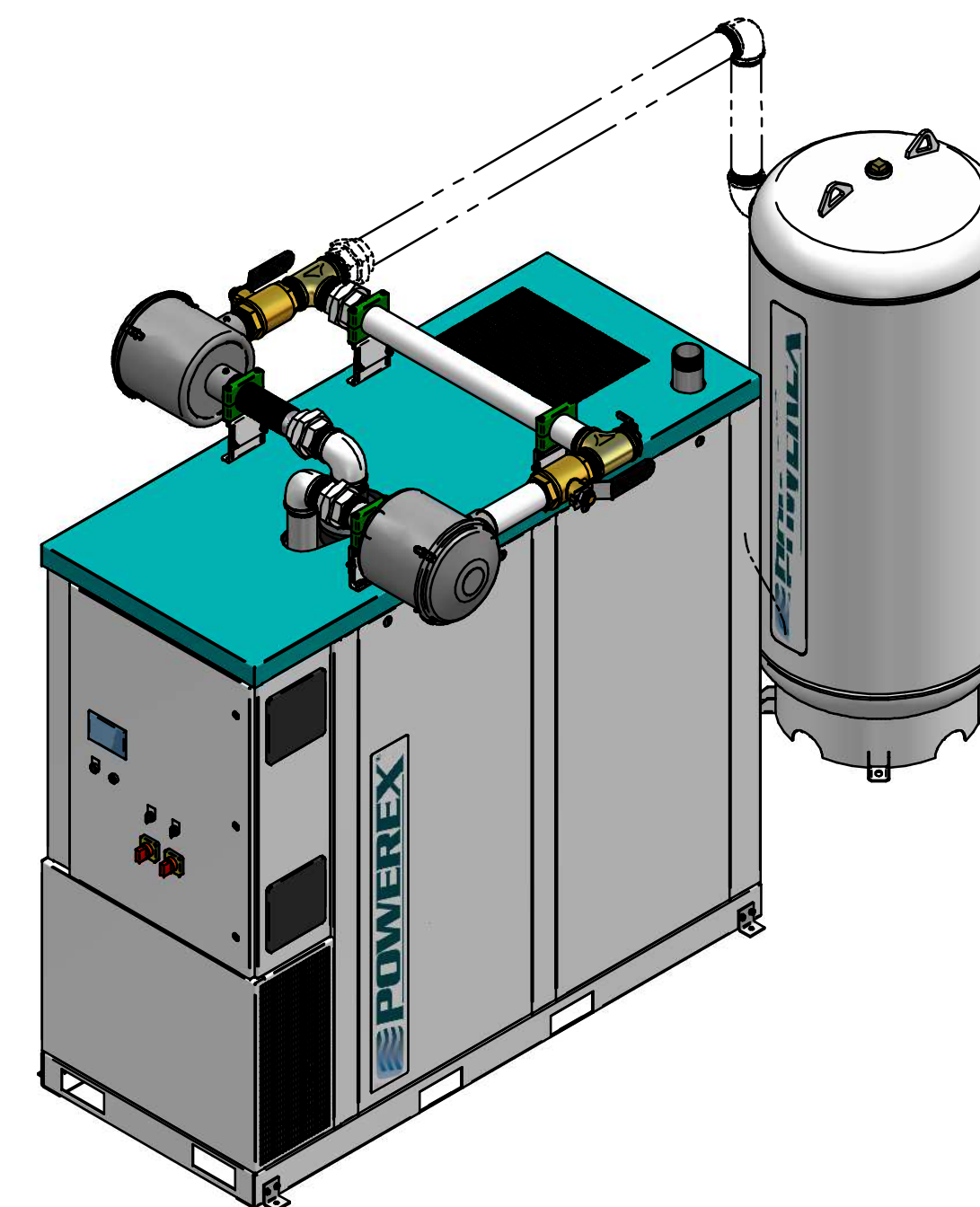
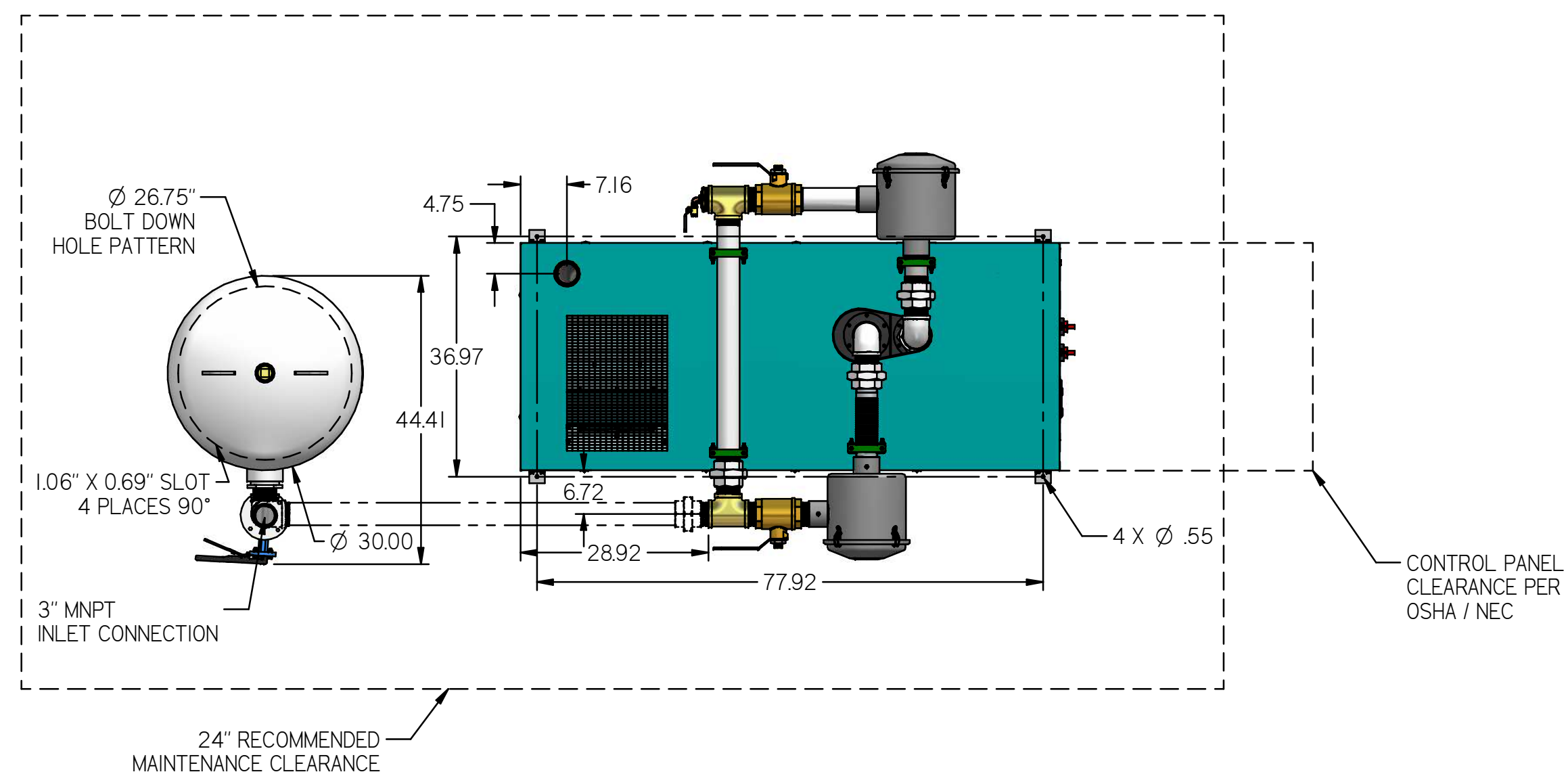


# LCEDI505

## LAB CLAW ENCLOSED DUPLEX 15 HP 200 GAL

REVISION NOTES		
DESCRIPTION	ECN	PR/NOR
PRODUCTION RELEASE	PXEC0099	N/A



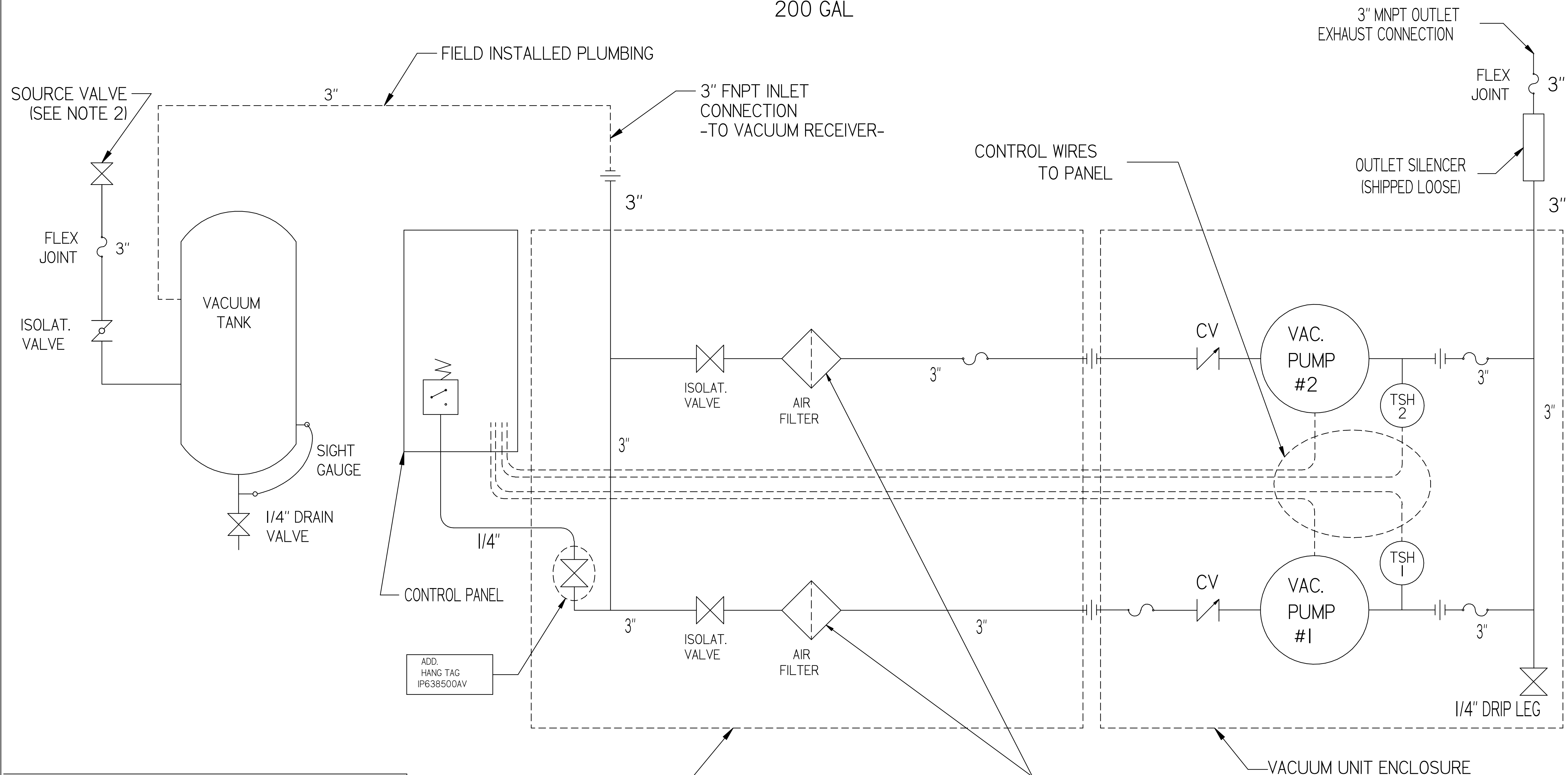
- NOTES:
- APPROX SYSTEM WEIGHT: 4271 LB
  - FINAL SYSTEM DIMENSIONS DEPENDENT UPON INSTALLATION CONFIGURATION. MAINTENANCE CLEARANCE MUST BE MAINTAINED IN INSTALLATION CONFIGURATION.
  - SHEET 1: UNIT BUILD
  - SHEET 2: FLOW SCHEMATIC

SYMBOL LEGEND		DRAWINGS TO CONFORM TO CURRENT REVISION OF THE FOLLOWING ANSI STANDARDS:		
		Y14.3 MULTI AND SECTIONAL VIEW DWGS		
		Y14.5 DIMENSIONING AND TOLERANCING		
TOLERANCES NOT SPECIFIED:	SOLID EDGE DRAWING	DO NOT SCALE DRAWING FOR DIMENSIONS		
0.XXX ± 0.10	INCH	SHEET 1 OF 2	SCALE 1:20	
0.XXX ± 0.050				
± 0.5				
CONFIDENTIAL DISCLOSURE This drawing is the property of POWEREX of the SCOTT FETTER COMPANY and is subject to return on demand. Its contents are confidential and must not be copied or submitted to outside parties for use or examination.		AUTHOR	APPROVALS ON FILE IN PLM	
		gseaver	2/7/2019	
TITLE: 718810				
MATERIAL: N/A				
DESCRIPTION: LAB CLAW ENCLOSED DUPLEX 15 HP 200 GAL		DRAWING NUMBER: LCEDI505	REVISION: B	SIZE: D

REVISION NOTES		
DESCRIPTION	ECN	PR/NOR
PRODUCTION RELEASE	PXEC0099	N/A

# LCEDI505

## LAB CLAW ENCLOSED DUPLEX 15 HP 200 GAL



LEGEND	
	TEMP. SWITCH
	AIR FILTER
	BALL VALVE
	VACUUM TRANSDUCER
	CHECK VALVE
	FLEX LINE
	UNION

**NOTES:**

- 1) TSH - TEMPERATURE SWITCH HIGH
- 2) PER NFPA THE SYSTEM WILL REQUIRE A SOURCE VALVE (SUPPLIED BY OTHERS).
- 3) OUTLET SILENCER AND FLEX HOSES SHIP LOOSE FOR FIELD INSTALLATION.
- 4) INLET FILTER ASSEMBLY SHIPS LOOSE FOR FIELD INSTALLATION.

**NOTE:**  
A 1/4 INCH VENT PLUG IS LOCATED IN EACH FILTER HOUSING.

SYMBOL LEGEND		DRAWINGS TO CONFORM TO CURRENT REVISION OF THE FOLLOWING ANSI STANDARDS:		
TOLERANCES NOT SPECIFIED:	SOLID EDGE DRAWING	DO NOT SCALE DRAWING FOR DIMENSIONS		
0.XXX ± 0.10	INCH	SHEET 2 OF 2	SCALE 10:1	
0.XXX ± 0.050				
± 0.5				
<small>CONFIDENTIAL DISCLOSURE</small> <small>This drawing is the property of POWEREX of the SCOTT FETTER COMPANY and is subject to return on demand. Its contents are confidential and must not be copied or submitted to outside parties for use or examination.</small>		<small>AUTHOR</small> gseaver	<small>ORIGINATION DATE</small> 2/7/2019	<small>APPROVALS ON FILE IN PLM</small>
<small>ITEM #</small> 718810 <small>MATERIAL</small> N/A	<small>POWEREX</small> <small>150 PRODUCTION DRIVE, HARRISON OH 45030</small> <small>888-768-7079</small>	<small>DRAWING NUMBER</small> LCEDI505	<small>REVISION</small> B	<small>SIZE</small> D
<small>DESCRIPTION</small> LAB CLAW ENCLOSED DUPLEX 15 HP 200 GAL				