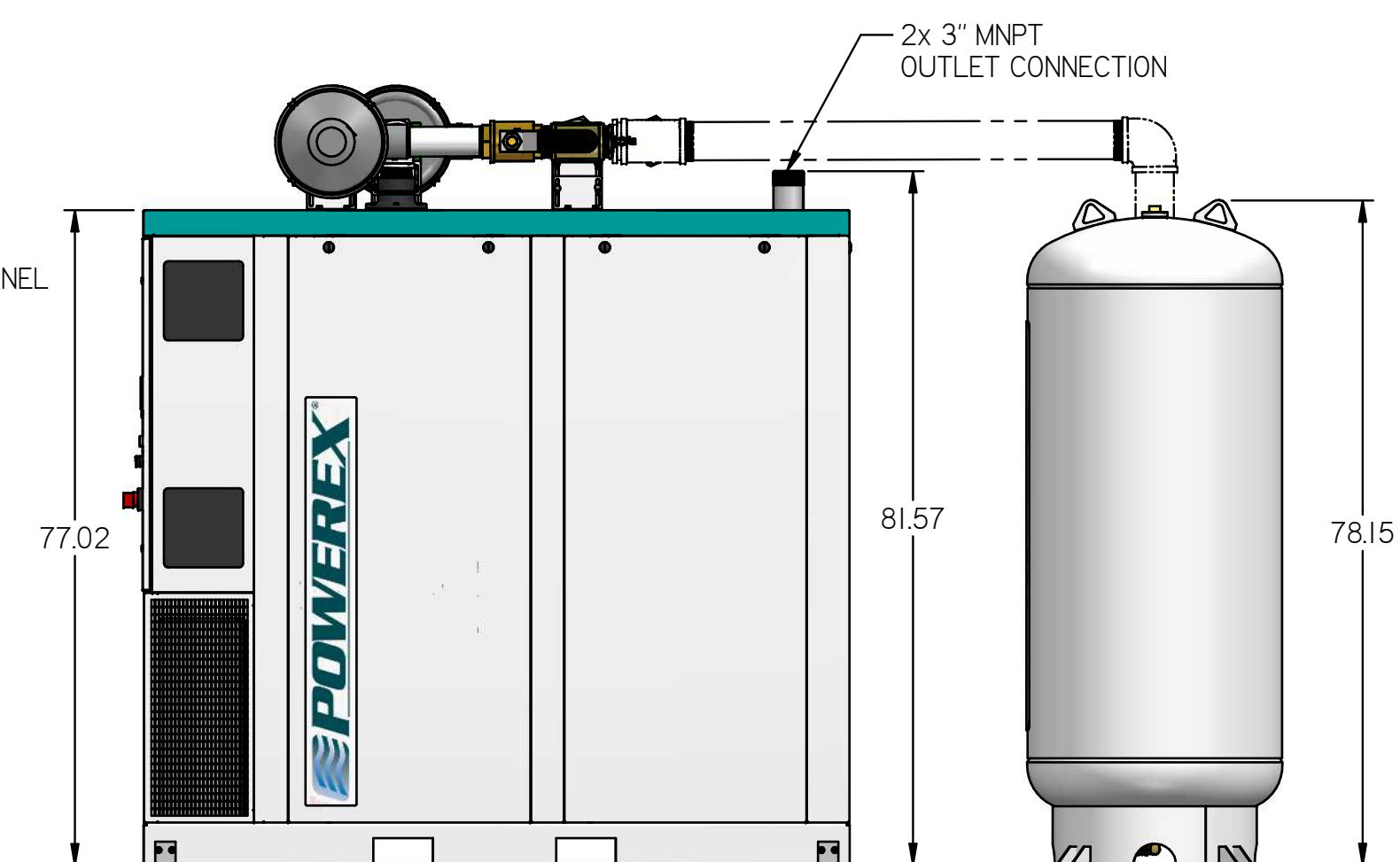
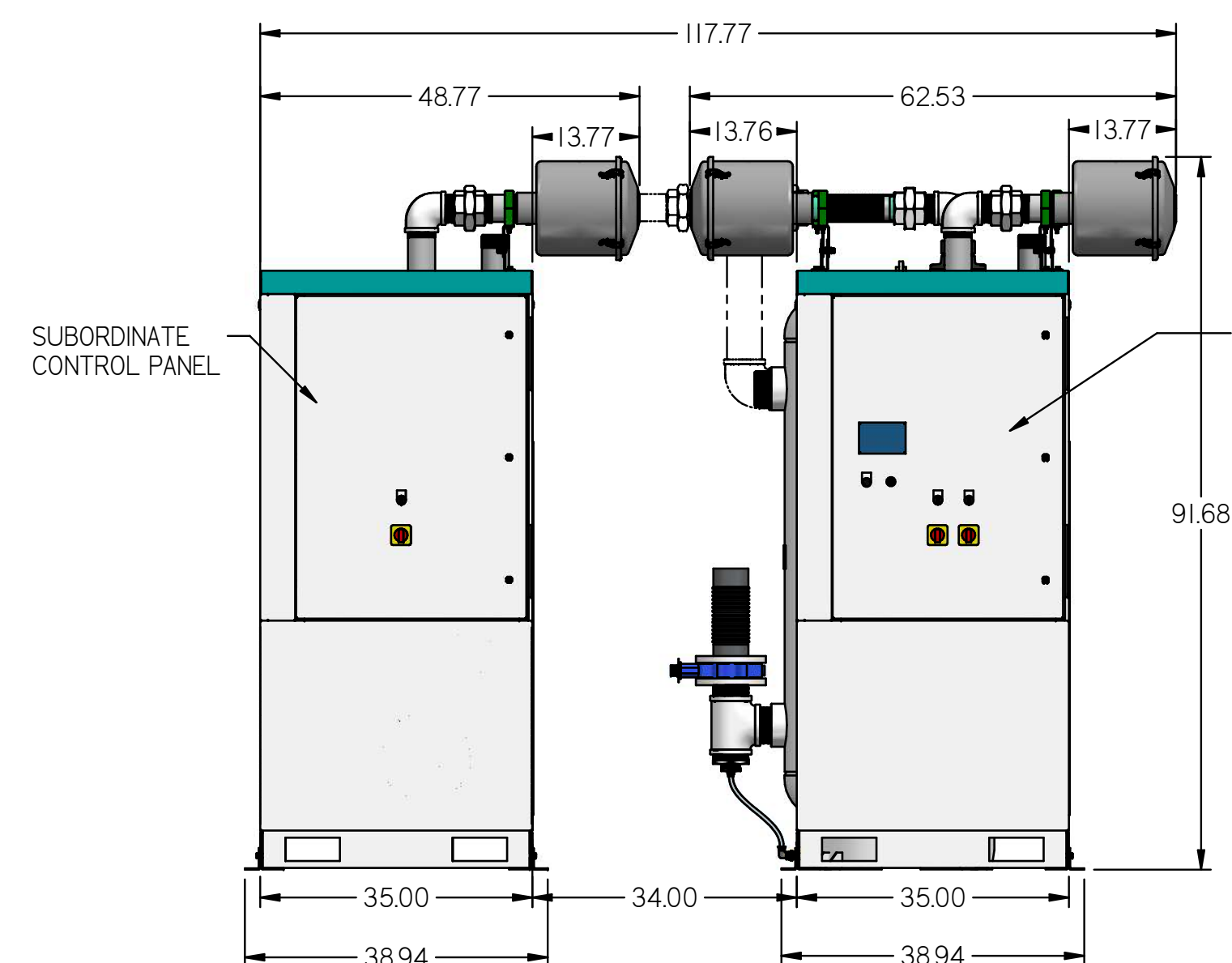
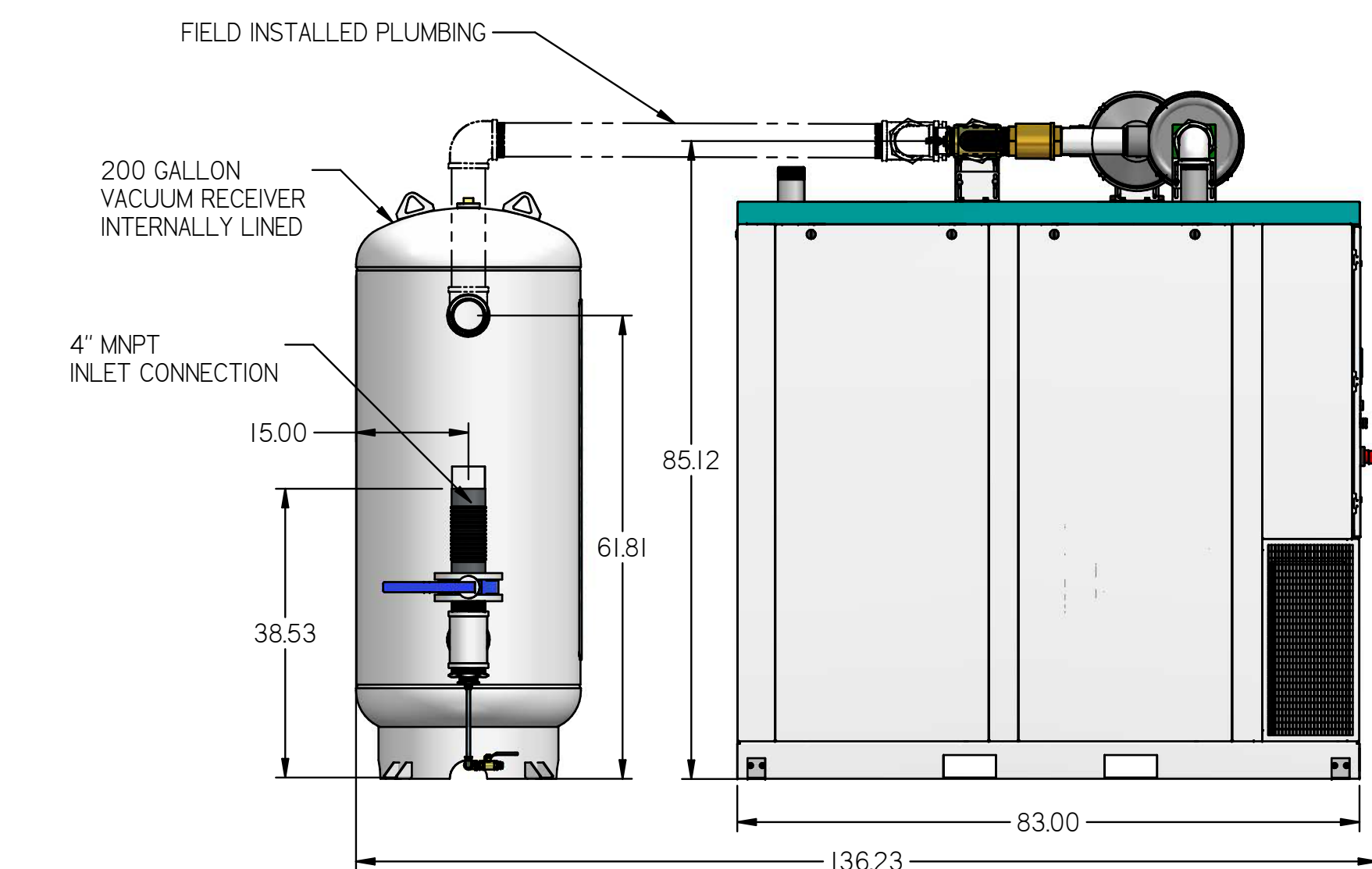
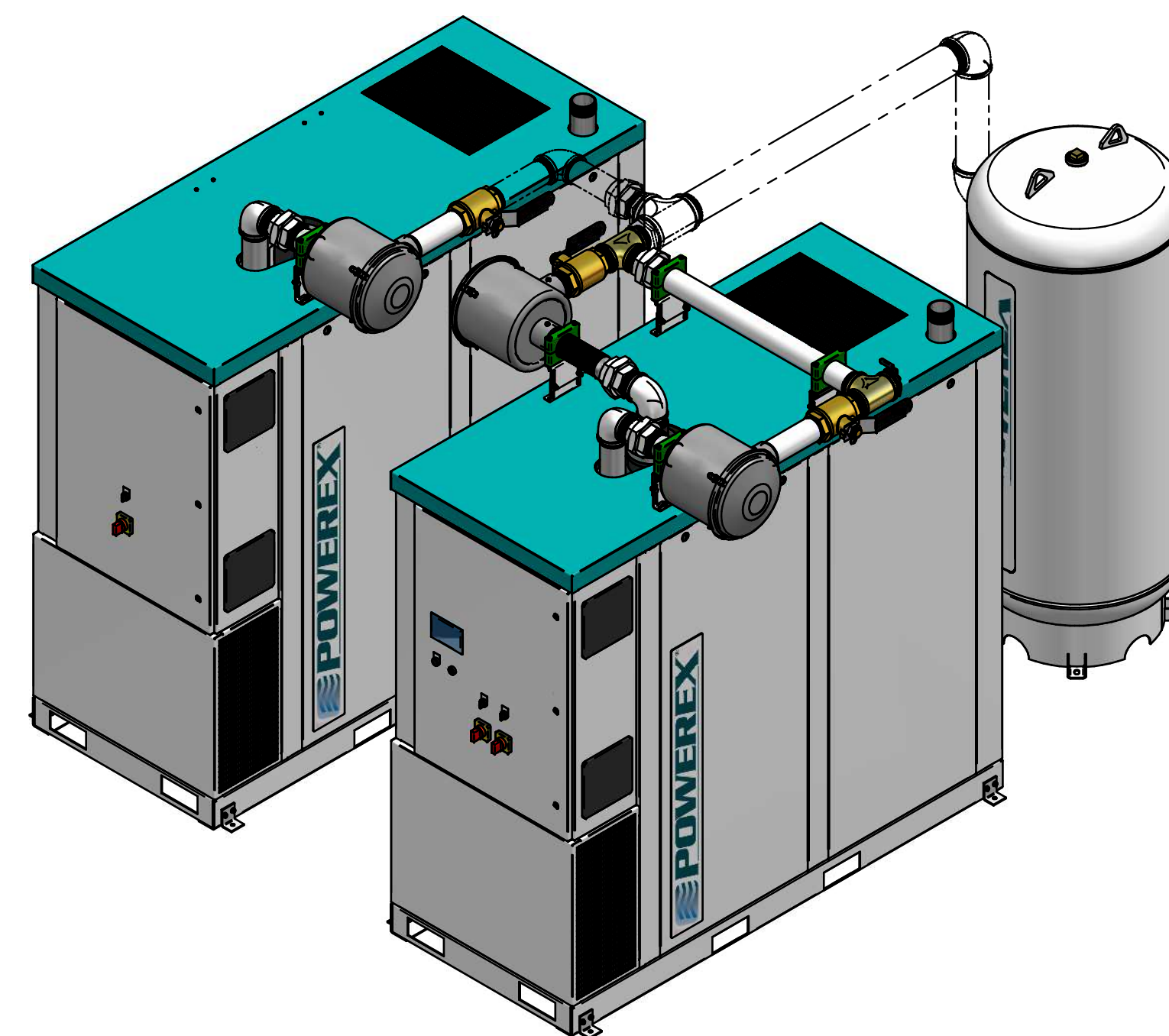
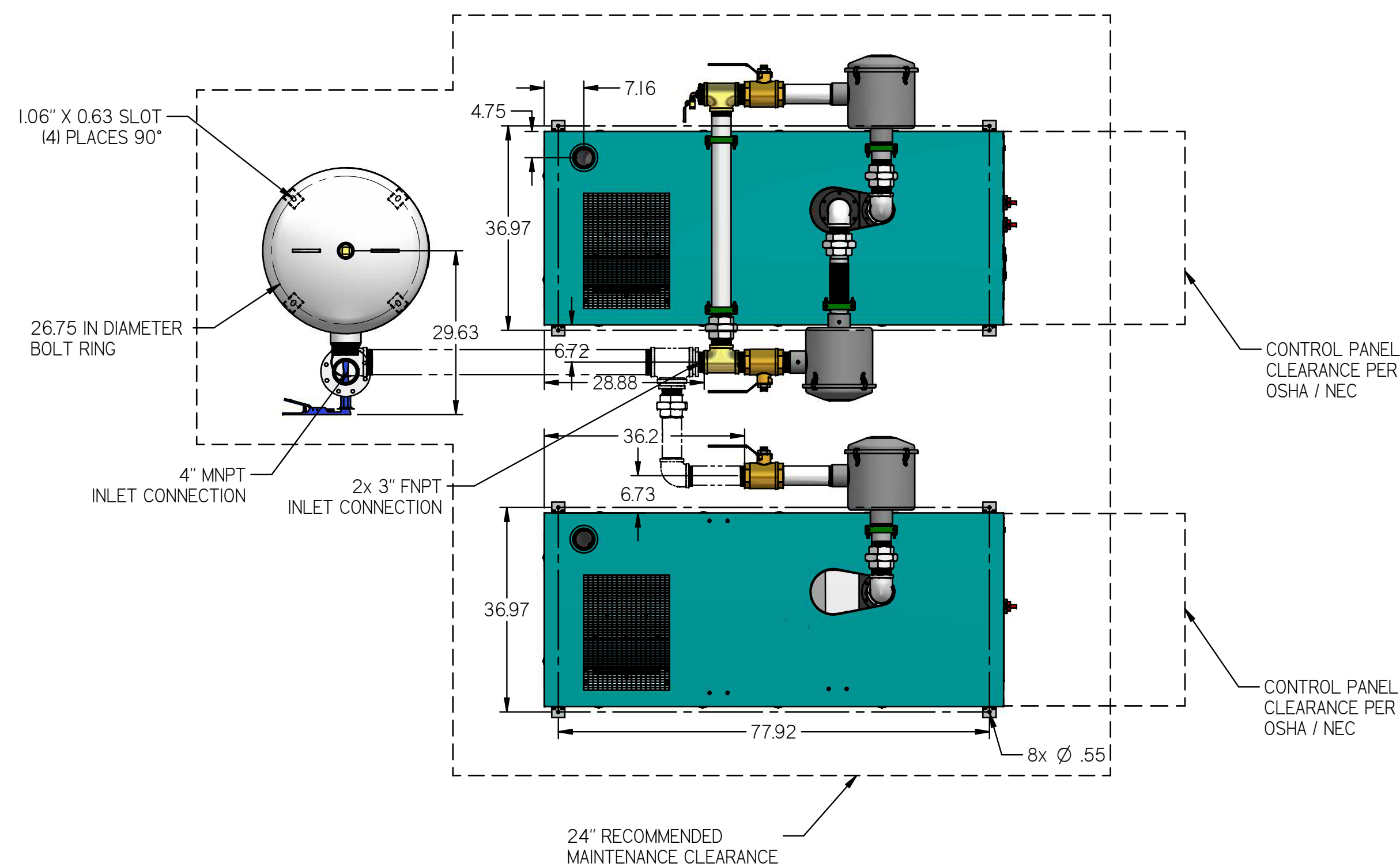


# LCET1505

## LAB CLAW ENCLOSED TRIPLEX 15 HP 200 GAL

REVISION NOTES		
DESCRIPTION	ECN	PR/NOR
PRODUCTION RELEASE	PXEC0099	N/A



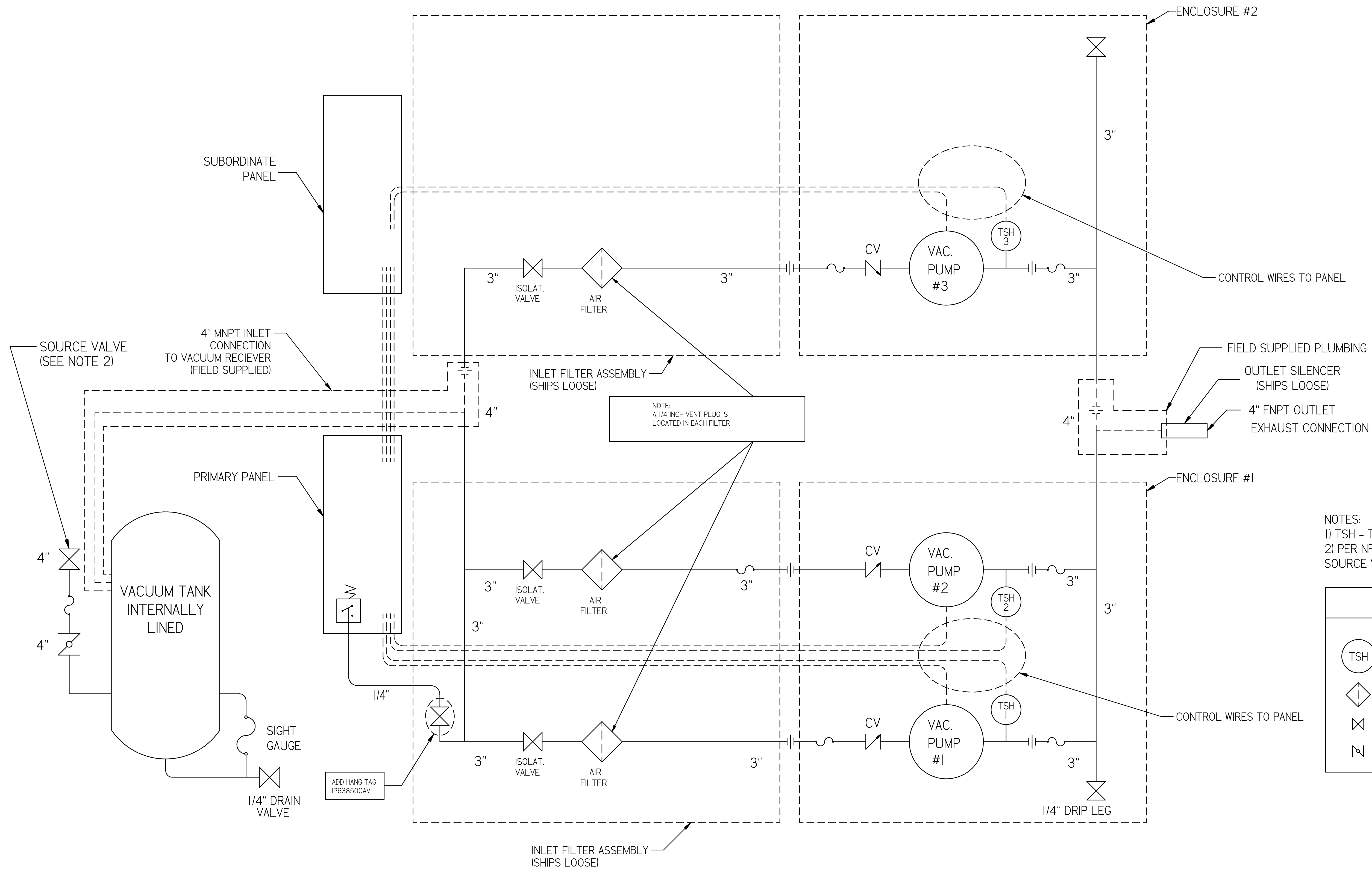
- NOTES:
- 1) APPROX SYSTEM WEIGHT: 6770 LB
  - 2) FINAL SYSTEM DIMENSIONS DEPENDENT UPON INSTALLATION CONFIGURATION. MAINTENANCE CLEARANCE MUST BE MAINTAINED IN INSTALLATION CONFIGURATION.
  - 3) SHEET 1: UNIT BUILD
  - 4) SHEET 2: FLOW SCHEMATIC

SYMBOL LEGEND		DRAWINGS TO CONFORM TO CURRENT REVISION OF THE FOLLOWING ANSI STANDARDS:		
		Y14.3 MULTI AND SECTIONAL VIEW DIMS		
		Y14.5 DIMENSIONING AND TOLERANCING		
TOLERANCES NOT SPECIFIED:	SOLID EDGE DRAWING	DO NOT SCALE DRAWING FOR DIMENSIONS		
0.XXX ± .010		SHEET 1 OF 2	SCALE 1:20	
0.XXX ± 0.050				
± .05	INCH			
CONFIDENTIAL DISCLOSURE This drawing is the property of POWEREX of the SCOTT FETTER COMPANY and is subject to return on demand. Its contents are confidential and must not be copied or submitted to outside parties for use or examination.		AUTHOR	ORIGINATION DATE	APPROVALS ON FILE IN PLM
DRAWER: 718822		gseaver	1/18/19	
MATERIAL: N/A				
DESCRIPTION: LAB CLAW ENCLOSED TRIPLEX 15 HP 200 GAL		DRAWING NUMBER: LCET1505	REVISION: B	SIZE: D

# LCET1505

LAB CLAW ENCLOSED  
TRIPLEX 15 HP 200 GAL

REVISION NOTES		
DESCRIPTION	ECN	PR/NOR
PRODUCTION RELEASE	PXEC0099	N/A



- NOTES:
- 1) TSH - TEMPERATURE SWITCH HIGH
  - 2) PER NFPA THE SYSTEM WILL REQUIRE A SOURCE VALVE (SUPPLIED BY OTHERS).

LEGEND	
TSH	TEMP. SWITCH
	AIR FILTER
	BALL VALVE
	BUTTERFLY BALL VALVE
	VACUUM TRANSDUCER
	CHECK VALVE
	FLEX LINE
	UNION

SYMBOL LEGEND		DRAWINGS TO CONFORM TO CURRENT REVISION OF THE FOLLOWING ANSI STANDARDS:	
TOLERANCES NOT SPECIFIED:		1/16" MULTI AND SECTIONAL VIEW DIMS	
0.001 ± 0.010	DRAWING	1/16" DIMENSIONING AND TOLERANCING	
0.0005 ± 0.0050			
± 0.005	INCH	SHEET 2 OF 2	SCALE 1:1
<small>CONFIDENTIAL DISCLOSURE</small> This drawing is the property of POWEREX of the SCOTT FETTER COMPANY and is subject to return on demand. Its contents are confidential and must not be copied or submitted to outside parties for use or examination.		<small>APPROVALS ON FILE IN PLM</small> AUTHOR: gseaver ORIGINATION DATE: 1/18/19	
ITEM NO: 718822			
MATERIAL: N/A	<small>150 PRODUCTION DRIVE, HARRISON OH 45030</small> <small>888-768-7079</small>		
DESCRIPTION: LAB CLAW ENCLOSED TRIPLEX 15 HP 200 GAL	DRAWING NUMBER: LCET1505	REVISION: B	SIZE: D