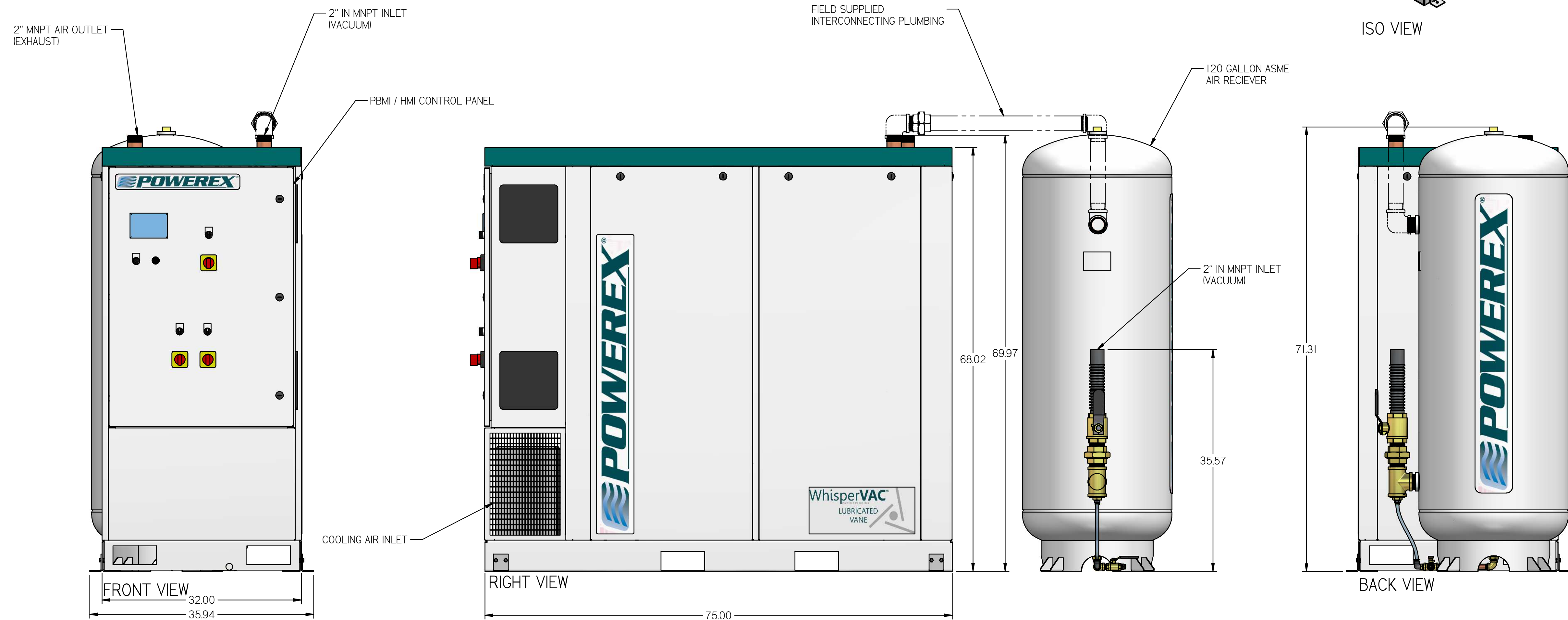
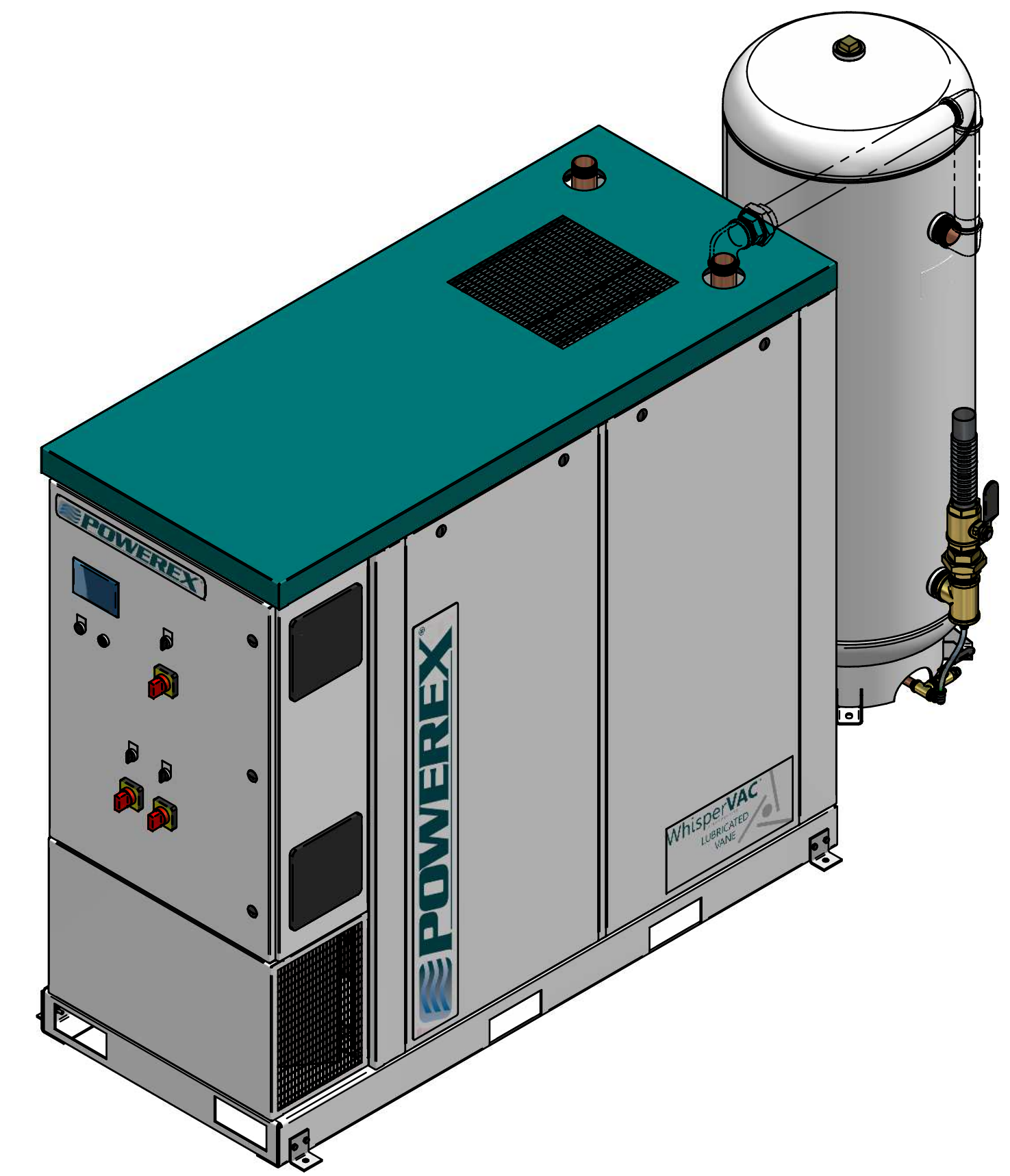
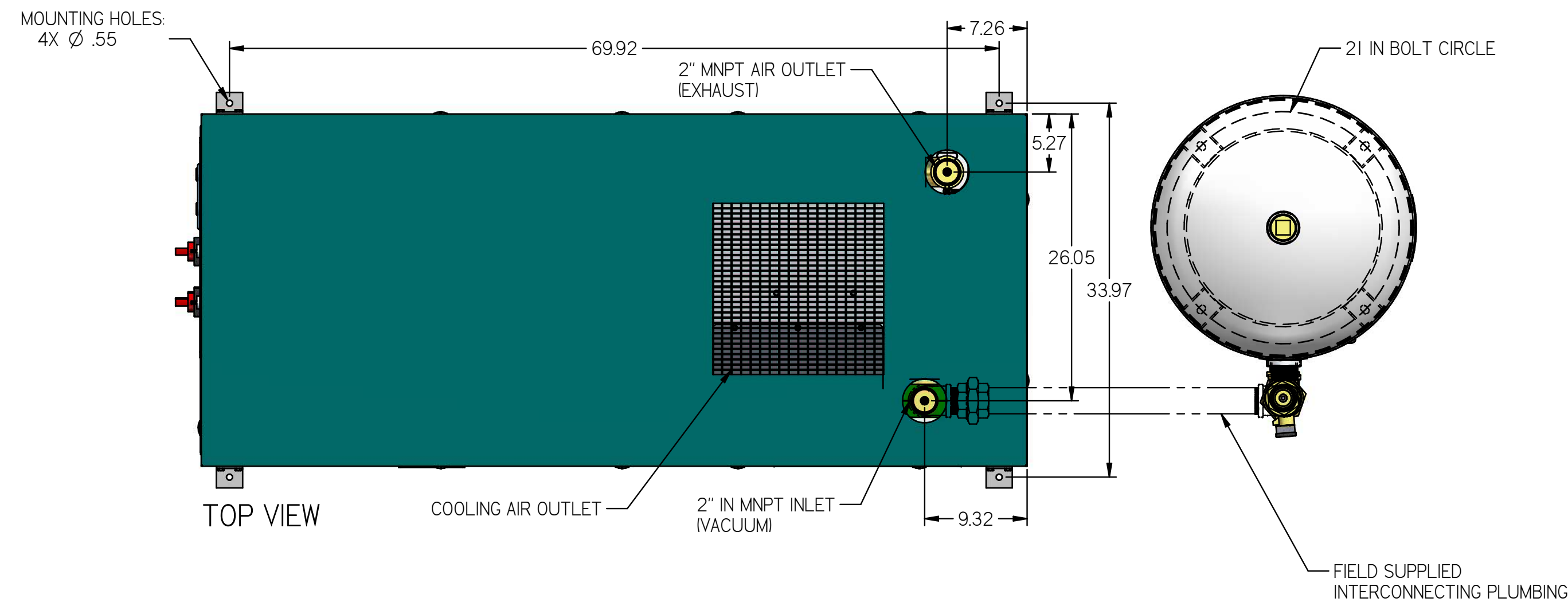


# LVED0504

LAB BIG 5 HP DUPLEX VANE  
VACUUM ENCLOSURE 120G  
TANK

REVISION NOTES		
DESCRIPTION	ECN	PR/NOR
PRODUCTION RELEASE	PXEC0099	N/A



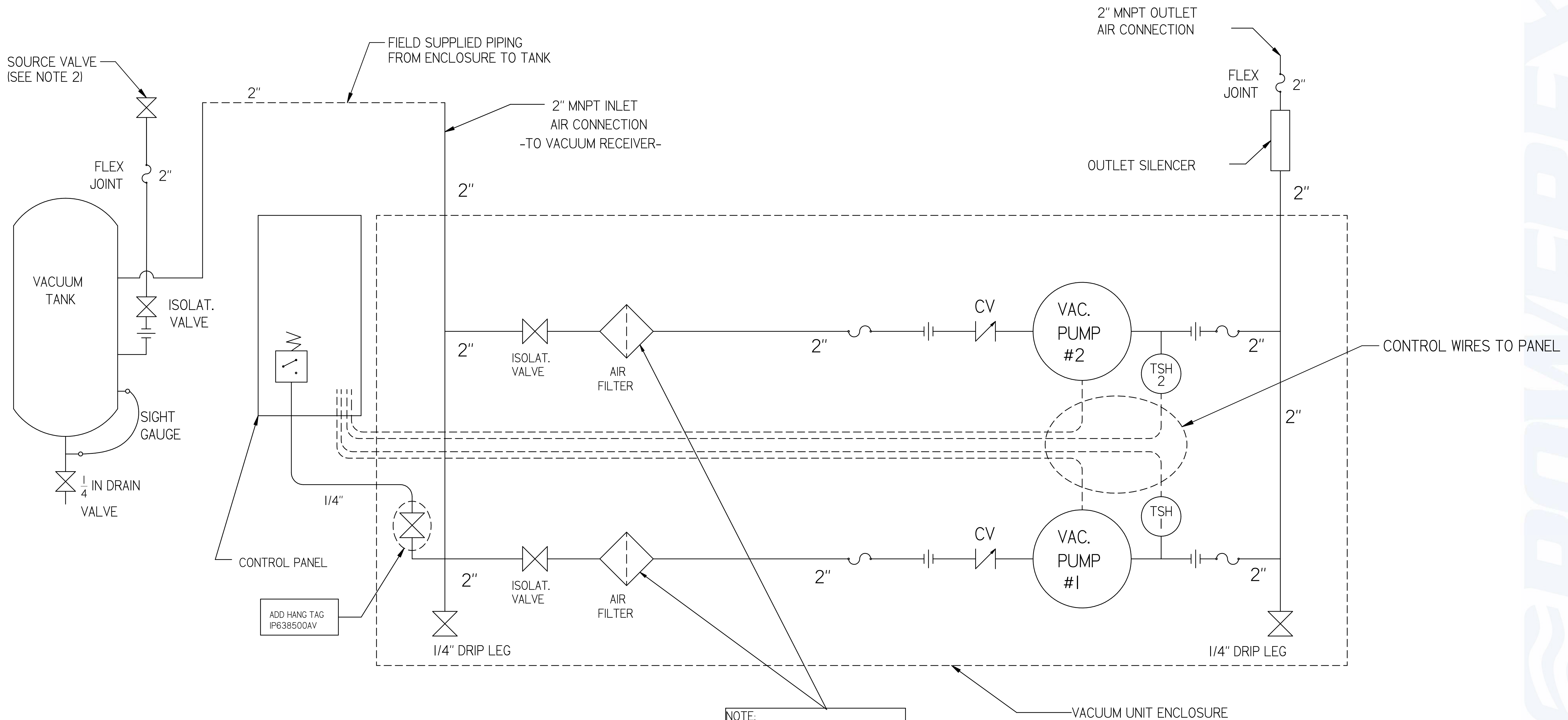
- NOTES:
- APPROX SYSTEM WEIGHT: 1808 LB
  - 24" MINIMUM MAINTENANCE CLEARANCE RECOMMENDED ALL SIDES. CLEARANCE FOR CONTROL PANELS SHALL BE IN ACCORDANCE WITH OSHA/NEC REQUIREMENTS

SYMBOL LEGEND		DRAWINGS TO CONFORM TO CURRENT REVISION OF THE FOLLOWING ANSI STANDARDS:	
		Y14.3 MULTI AND SECTIONAL VIEW DIMS	Y14.5 DIMENSIONING AND TOLERANCING
TOLERANCES NOT SPECIFIED:	SOLID EDGE DRAWING	DO NOT SCALE DRAWING FOR DIMENSIONS	
0.XXX ± .05	INCH	SHEET 1 OF 2	SCALE 1:10
0.XXX ± .005			
CONFIDENTIAL DISCLOSURE: This drawing is the property of POWEREX of the SCOTT FETTER COMPANY and is subject to return on demand. Its contents are confidential and must not be copied or submitted to outside parties for use or examination.		AUTHOR	APPROVALS ON FILE IN PLM
POWEREX		ASoulek	2/9/2019
TITLE: 717777		POWEREX	
MATERIAL: SEE COMPONENT DRAWINGS		150 PRODUCTION DRIVE, HARRISON OH 45030 888-768-7079	
DESCRIPTION: LAB BIG 5 HP DUPLEX VANE VACUUM ENCLOSURE 120G TANK		DRAWING NUMBER: LVED0504	REVISION: B
		SIZE: B	D

# LVED0504

## LAB BIG 5 HP DUPLEX VANE VACUUM ENCLOSURE 120G TANK

REVISION NOTES		
DESCRIPTION	ECN	PR/NOR
PRODUCTION RELEASE	PXEC0099	N/A



**NOTE:**  
A 1/4 INCH VENT PLUG IS LOCATED  
IN EACH FILTER HOUSING.

LEGEND	
(TSH)	TEMP. SWITCH
(AIR FILTER)	AIR FILTER
(BALL VALVE)	BALL VALVE
(VACUUM TRANSDUCER)	VACUUM TRANSDUCER
(CHECK VALVE)	CHECK VALVE
(FLEX LINE)	FLEX LINE
(UNION)	UNION

- NOTES:**
- 1) TSH - TEMPERATURE SWITCH HIGH
  - 2) PER NFPA THE SYSTEM WILL REQUIRE A SOURCE VALVE (SUPPLIED BY OTHERS).
  - 3) OUTLET SILENCER AND FLEX HOSES SHIP LOOSE FOR FIELD INSTALLATION.

SYMBOL LEGEND		DRAWINGS TO CONFORM TO CURRENT REVISION OF THE FOLLOWING ANSI STANDARDS: Y14.3 MULTI AND SECTIONAL VIEW DWGS Y14.5 DIMENSIONING AND TOLERANCING			
TOLERANCES NOT SPECIFIED	SOLID EDGE DRAWING	DO NOT SCALE DRAWING FOR DIMENSIONS			
0.XXX ± .05			SHEET 2 OF 2	SCALE	1:1
0.XXX ± .005					
<small>CONFIDENTIAL DISCLOSURE</small> This drawing is the property of POWEREX or the SCOTT FETTER COMPANY and is subject to return on demand. Its contents are confidential and must not be copied or submitted to outside parties for use or examination.		<small>AUTHOR</small> ASoulek	<small>ORIGINATION DATE</small> 2/9/2019	<small>APPROVALS ON FILE IN PLM</small>	
<small>ITEM NO.</small> Z17777			<small>150 PRODUCTION DRIVE, HARRISON OH 45030            (888) 768-7079</small>		
<small>DESCRIPTION</small> LAB BIG 5 HP DUPLEX VANE VACUUM ENCLOSURE 120G TANK	<small>DRAWING NUMBER</small> LVED0504	<small>REVISION</small> B	<small>SIZE</small> D		

