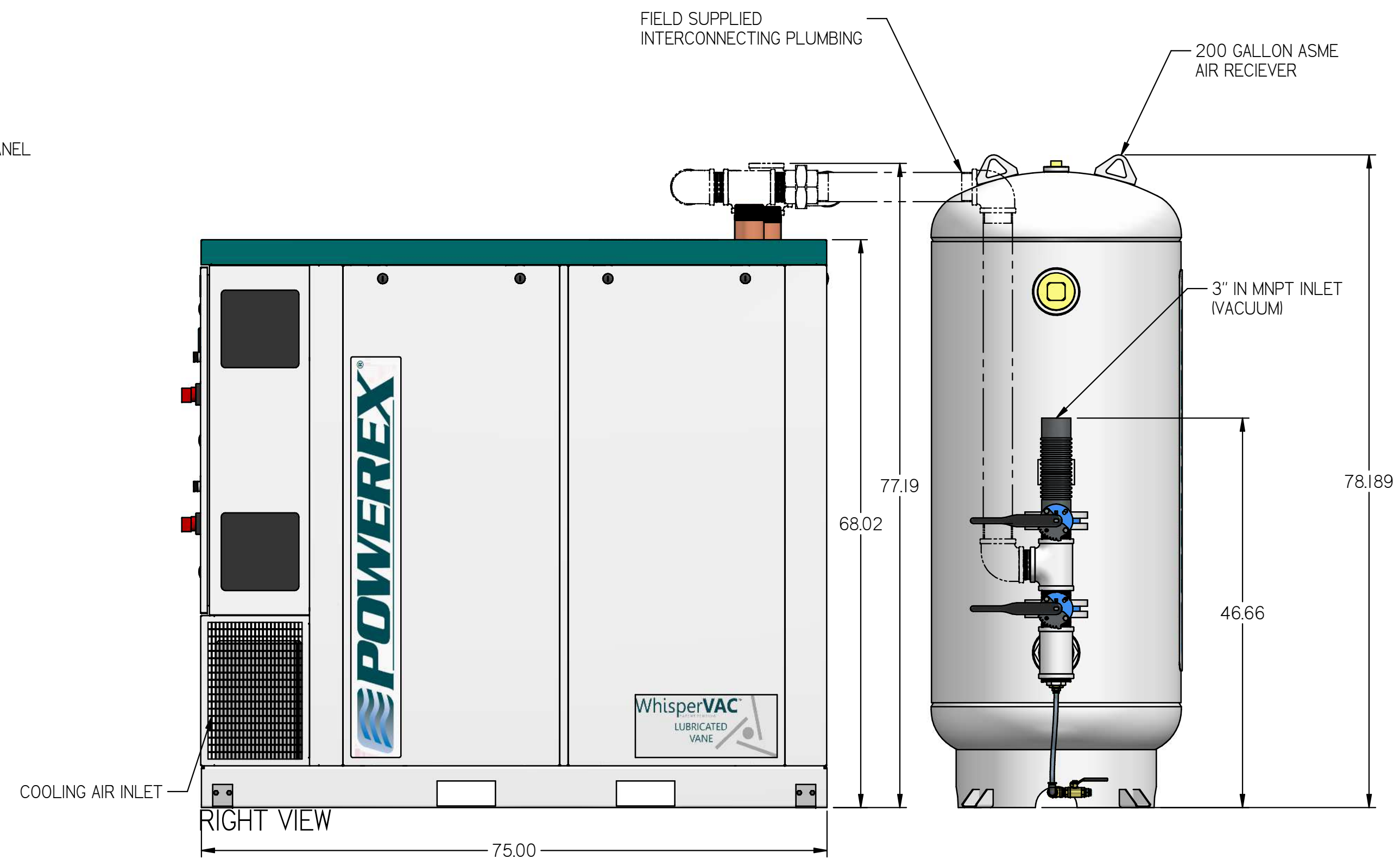
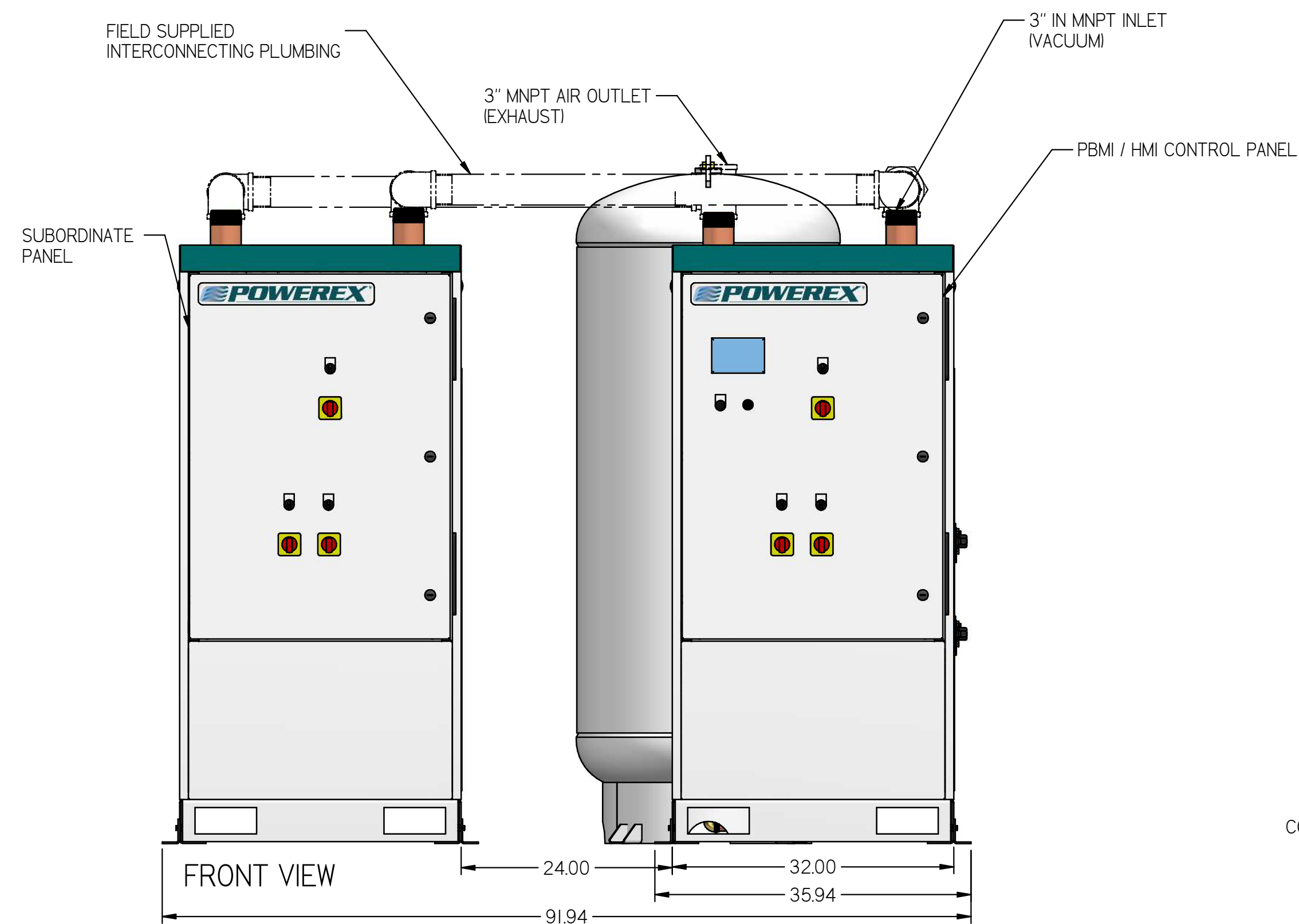
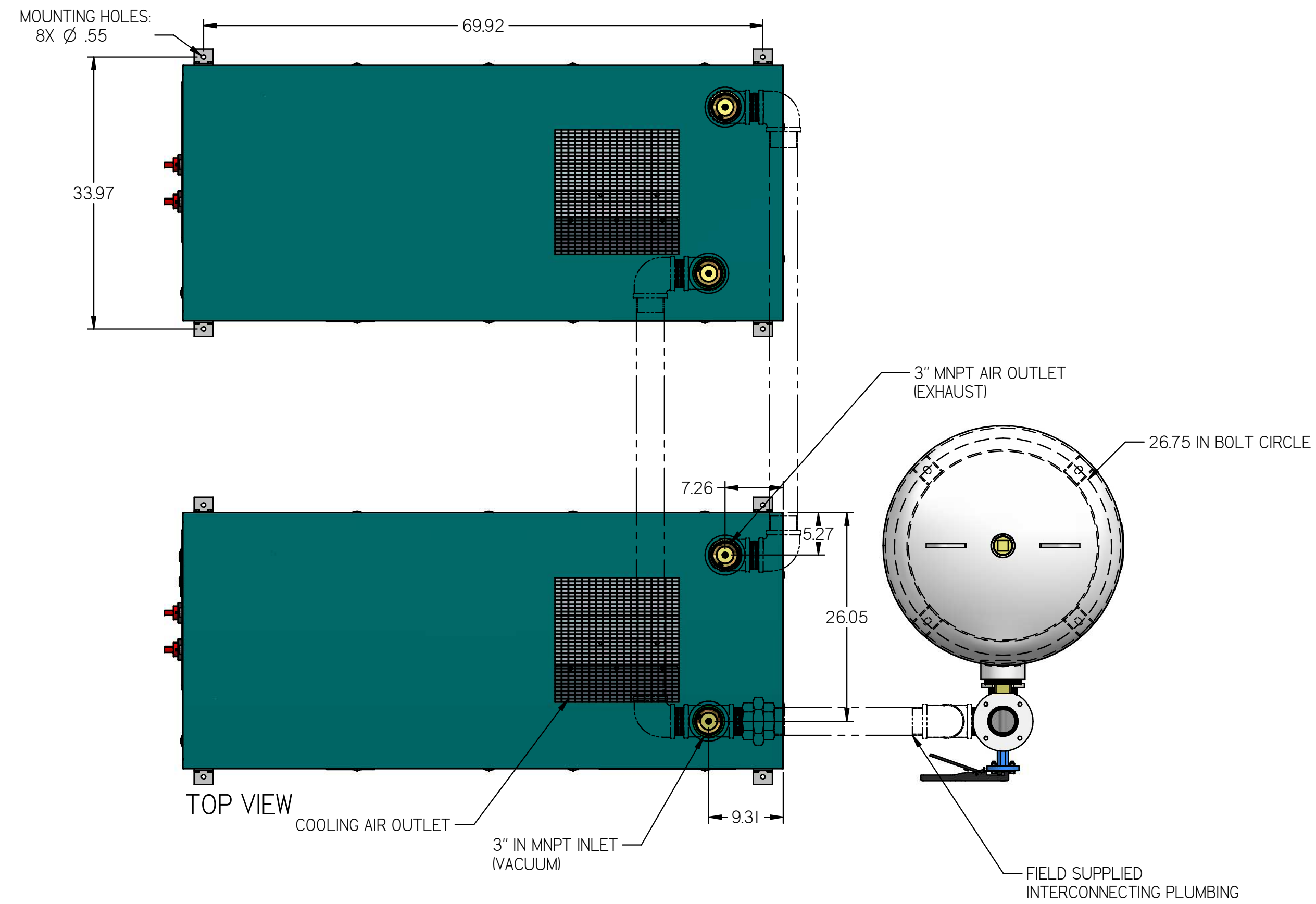
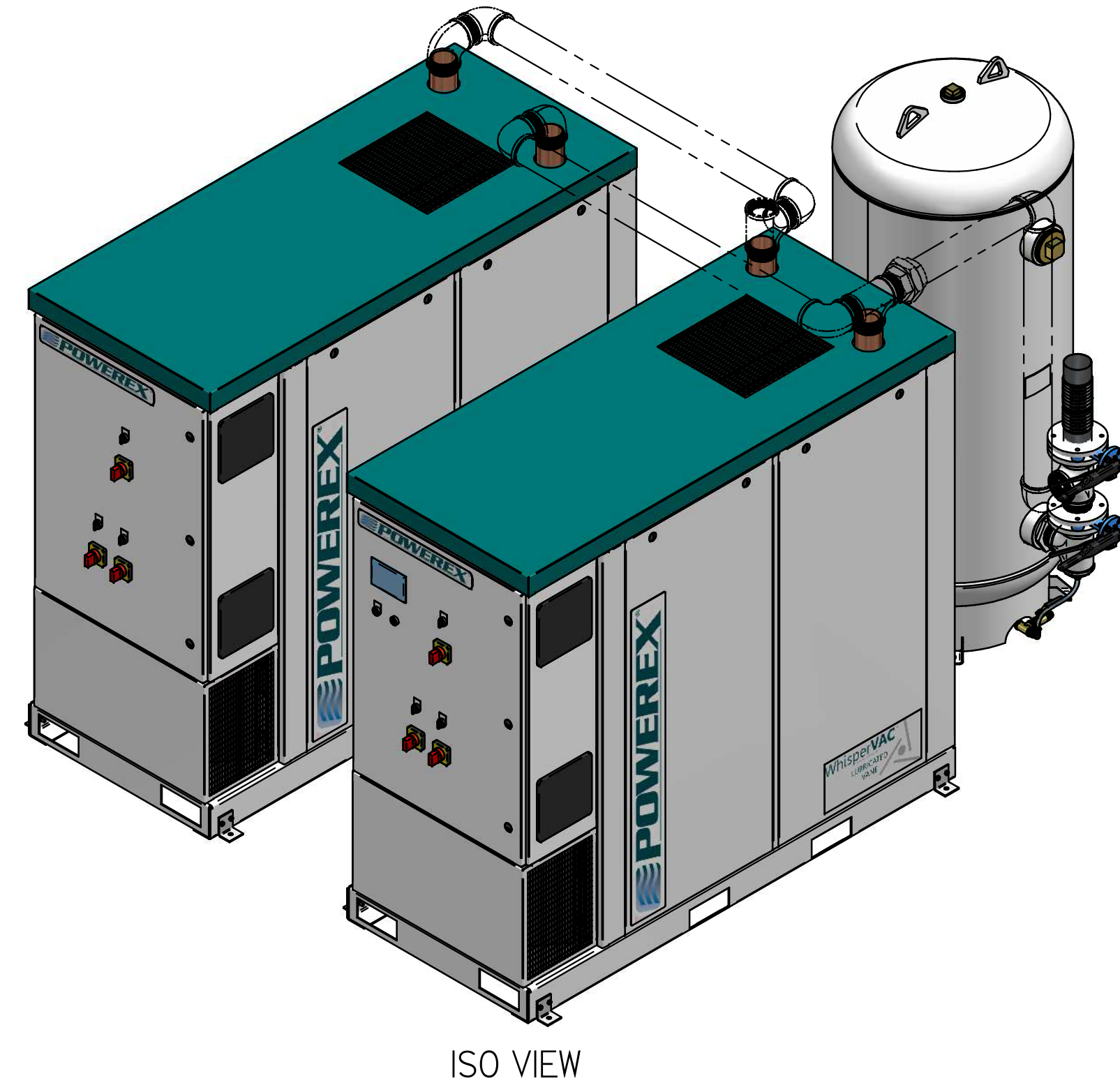


MVET0505-EX4

MEDICAL 5 HP TRIPLEX EXP
TO QUAD VANE VACUUM
ENCLOSURE 200G TANK

REVISION NOTES		
DESCRIPTION	ECN	PR/NOR
PRODUCTION RELEASE	PXEC0099	N/A



- NOTES:
- APPROX SYSTEM WEIGHT: 3407 LB
 - 24" MINIMUM MAINTENANCE CLEARANCE RECOMMENDED ALL SIDES. CLEARANCE FOR CONTROL PANEL SHALL BE IN ACCORDANCE WITH OSHA/NEC REQUIREMENTS

SYMBOL LEGEND		DRAWINGS TO CONFORM TO CURRENT REVISION OF THE FOLLOWING ANSI STANDARDS:	
		Y14.3 MULTI AND SECTIONAL VIEW DIMS	
		Y14.5 DIMENSIONING AND TOLERANCING	
TOLERANCES NOT SPECIFIED:	SOLID EDGE DRAWING	DO NOT SCALE DRAWING FOR DIMENSIONS	
0.XXX ± .05	INCH	SHEET 1 OF 2	SCALE 1:12.5
0.XXX ± .005			
CONFIDENTIAL DISCLOSURE This drawing is the property of POWEREX of the SCOTT FETTER COMPANY and is subject to return on demand. Its contents are confidential and must not be copied or submitted to outside parties for use or examination.		AUTHOR	APPROVALS ON FILE IN PLM
7/17/82		ASoulek	2/5/2019
MATERIAL: SEE COMPONENT DRAWINGS			
DESCRIPTION: MEDICAL 5 HP TRIPLEX EXP TO QUAD VANE VACUUM ENCLOSURE 200G TANK		DRAWING NUMBER: MVET0505-EX4	REVISION: B D

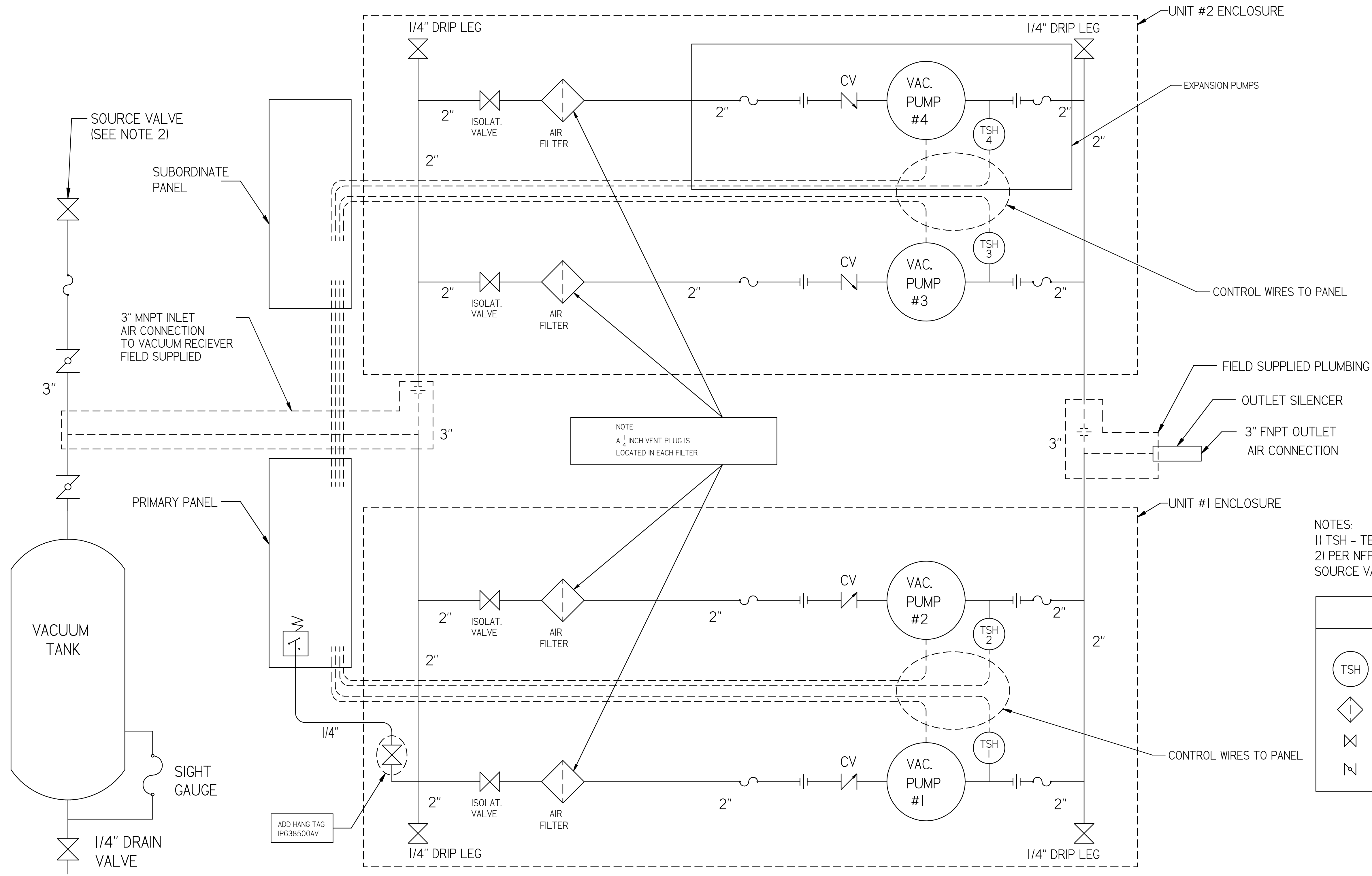
POWEREX

MVET0505-EX4

MEDICAL 5 HP TRIPLEX EXP
TO QUAD VANE VACUUM
ENCLOSURE 200G TANK

REVISION NOTES

DESCRIPTION	ECN	PR/NOR
PRODUCTION RELEASE	PXEC0099	N/A



- NOTES:
1) TSH - TEMPERATURE SWITCH HIGH
2) PER NFPA THE SYSTEM WILL REQUIRE A
SOURCE VALVE (SUPPLIED BY OTHERS).

LEGEND	
TSH	TEMP. SWITCH
	AIR FILTER
	BALL VALVE
	BUTTERFLY BALL VALVE
	VACUUM TRANSDUCER
	CHECK VALVE
	FLEX LINE
	UNION

SYMBOL LEGEND		DRAWINGS TO CONFORM TO CURRENT REVISION OF THE FOLLOWING ANSI STANDARDS:		
TOLERANCES NOT SPECIFIED	SOLID EDGE DRAWING	Y14.3 MULTI AND SECTIONAL VIEW DIMS	Y14.5 DIMENSIONING AND TOLERANCING	
0.001 ± .005	INCH	DO NOT SCALE DRAWING FOR DIMENSIONS		
0.0005 ± .0005		SHEET 2 OF 2	SCALE 1:1	
<small>CONFIDENTIAL DISCLOSURE</small> This drawing is the property of POWEREX or the SCOTT FETTER COMPANY and is subject to return on demand. Its contents are confidential and must not be copied or submitted to outside parties for use or examination.		AUTHOR	ORIGINATION DATE	APPROVALS ON FILE IN PLM
TITLE: 717782 MATERIAL: SEE COMPONENT DRAWINGS		ASoulek	2/5/2019	
DESCRIPTION: MEDICAL 5 HP TRIPLEX EXP TO QUAD VANE VACUUM ENCLOSURE 200G TANK		DRAWING NUMBER: MVET0505-EX4		REVISION: B SIZE: D

