

POWEREX[®]

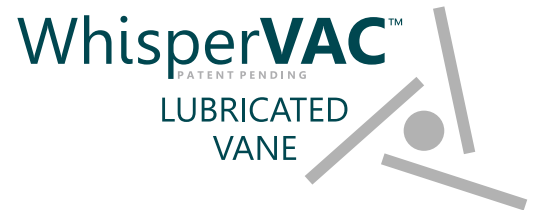


Enclosed Lubricated Vane Vacuum Systems

WhisperVAC™ SOUND ENCLOSURE CABINET

Powerex's trademarked sound enclosure systems offer the lowest noise levels in the industry. Each system is packaged in a rigid steel frame with powder coated panels and lined with sound-deadening insulation.

- Claw vacuum pumps are enclosed within sound-reducing panels – **an industry first!**
- Sound intensity is reduced by an average of 14 dBA over comparable open frame systems – **4x sound reduction**
 - All systems are well within NIOSH limits of 8 hour exposure
 - Helps protect the hearing of healthcare facility employees
 - Improves working environment near the medical vacuum system
 - Helps avoid disturbing patients and/or hospital employees
- Ultimate sound reduction achieved when packaged with Powerex WhisperAir™ enclosed scroll medical air systems – *the quietest source equipment in the industry!*



HEARING LOSS PREVENTION

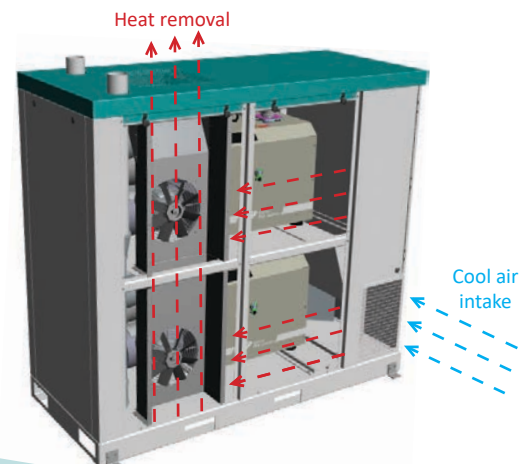


Occupational hearing loss is the most commonly recorded occupational illness in manufacturing, accounting for **1 in 9 recordable illnesses**. Powerex WhisperVac™ technology provides a real solution for workers operating in loud mechanical rooms, as well as any facility employees who are ever in close proximity to the vacuum system.

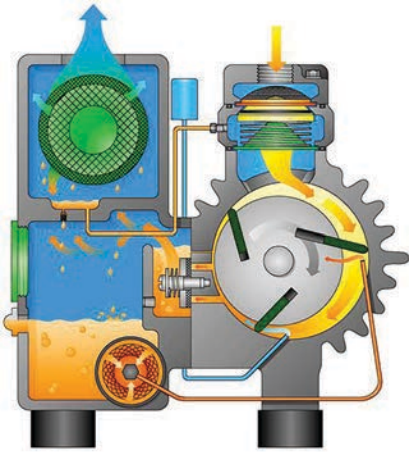
Hearing loss is a significant cost that is preventable!

PATENT-PENDING COOLING SYSTEM

Patent-pending internal pump cooling system ensures vacuum pumps operate well within acceptable temperature ranges.



LUBRICATED ROTARY VANE PUMP



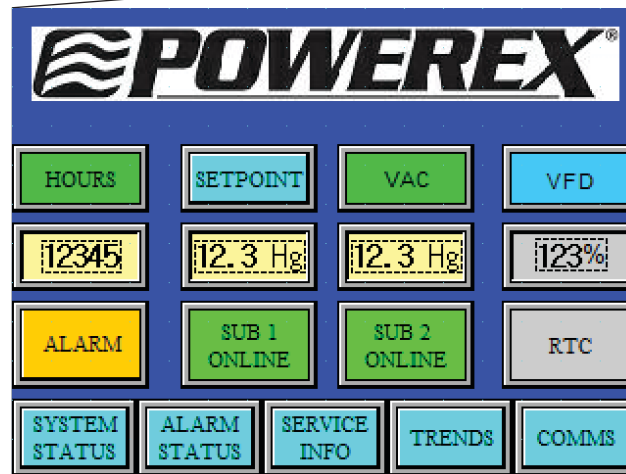
A rotor is mounted eccentrically in the pump cylinder and contains several sliding vanes. As the rotor turns, centrifugal force causes the vanes to slide outward against the cylinder wall. Oil is injected into the pumping chamber to create a seal between the vanes and the cylinder wall and to lubricate the vanes for reduced wear. As a result of the offset rotor, a succession of variable volumes is formed in the cylinder housing creating the flow of air through the pump. Air is pulled into the pump inlet which is then compressed and discharged into the exhaust box. At this point oil is mixed with the air and is passed through several stages of internal oil and mist eliminators to remove 99.9% of the lubricating oil before the exhaust is released to atmosphere. The separated oil is then returned to the oil reservoir.

SYSTEM CONFIGURATION



SYSTEM CONTROLS

- Robust Primary-Subordinate controls logic
- Auto fail-safe & auto reconnect
- UL508A listed and labeled, NEMA 4/12 enclosure
- PLC Controller and 6" color HMI touchscreen displays the operating status of the system
- Easily expandable
- Building automation gateway with BacNet® protocol
 - Email notifications for alarms and service alerts
- Visual and audible alarms for:
 - System overload trip
 - High temperature conditions
 - Service intervals
- Panel door includes:
 - Audible and visual alarms
 - HOA switch for each pump



BENEFITS

- Low noise level
- No need for a separate room for vacuum system due to noise
- Lowest initial cost
- Oil-flooded for lubrication and heat dissipation
- Air cooled
- Maintenance friendly
 - Easy to remove latched panels
 - Isolator bolt elevator rail for lower pump removal

OPTIONS & ACCESSORIES

- Premium Warranty
- Variable Frequency Drive (VFD) Controls
 - Saves up to 40% in energy costs vs. standard Load/Unload
- Internal Tank Lining

ENCLOSED LUBRICATED VANE VACUUM SYSTEMS SPECIFICATIONS

NFPA 99 MEDICAL SYSTEMS					
Model	System HP	Pump HP	SCFM @ 19" Hg*	Tank (gal)	dB(A) Level*
Duplex					
MVED0407	10	5 (2)	27.5	N/A	58
MVED0403	10	5 (2)	27.5	80	58
MVED0404	10	5 (2)	27.5	120	58
MVED0507	10	5 (2)	37.3	N/A	64
MVED0503	10	5 (2)	37.3	80	64
MVED0504	10	5 (2)	37.3	120	64
MVED0757	15	7.5 (2)	49.0	N/A	70
MVED0754	15	7.5 (2)	49.0	120	70
MVED0755	15	7.5 (2)	49.0	200	70
Duplex Expandable to Triplex					
MVED0504-EX3	10	5 (2)	37.3	120	64
MVED0754-EX3	15	7.5 (2)	49.0	120	70
Triplex					
MVET0504	15	5 (3)	74.6	120	65
MVET0754	22.5	7.5 (3)	98.0	120	73
Triplex Expandable to Quadplex					
MVET0505-EX4	15	5 (3)	74.6	200	65
MVET0755-EX4	22.5	7.5 (3)	98.0	200	73
Quadplex					
MVEQ0505	20	5 (4)	112.0	200	67
MVEQ0755	30	7.5 (4)	147.0	200	75

*Shown with one pump in reserve per NFPA 99

LABORATORY SYSTEMS					
Model	System HP	Pump HP	SCFM @ 19" Hg	Tank (gal)	dB(A) Level
Duplex					
LVED0407	10	5 (2)	55.0	N/A	61
LVED0404	10	5 (2)	55.0	120	61
LVED0507	10	5 (2)	74.6	N/A	67
LVED0504	10	5 (2)	74.6	120	67
LVED0757	15	7.5 (2)	98.0	N/A	73
LVED0754	15	7.5 (2)	98.0	120	73
Triplex					
LVET0504	15	5 (3)	112.0	120	67
LVET0754	22.5	7.5 (3)	147.0	120	75
Quadplex					
LVEQ0505	20	5 (4)	149.2	200	68
LVEQ0755	30	7.5 (4)	196.0	200	76

For more information contact your local Powerex distributor or Powerex sales representative today



**The leader in
Medical Gas
Solutions**



 **POWEREX**[®]

150 Production Drive • Harrison, OH 45030 • USA
T 1.888.769.7979 • F 513.367.3125 • www.powerexinc.com