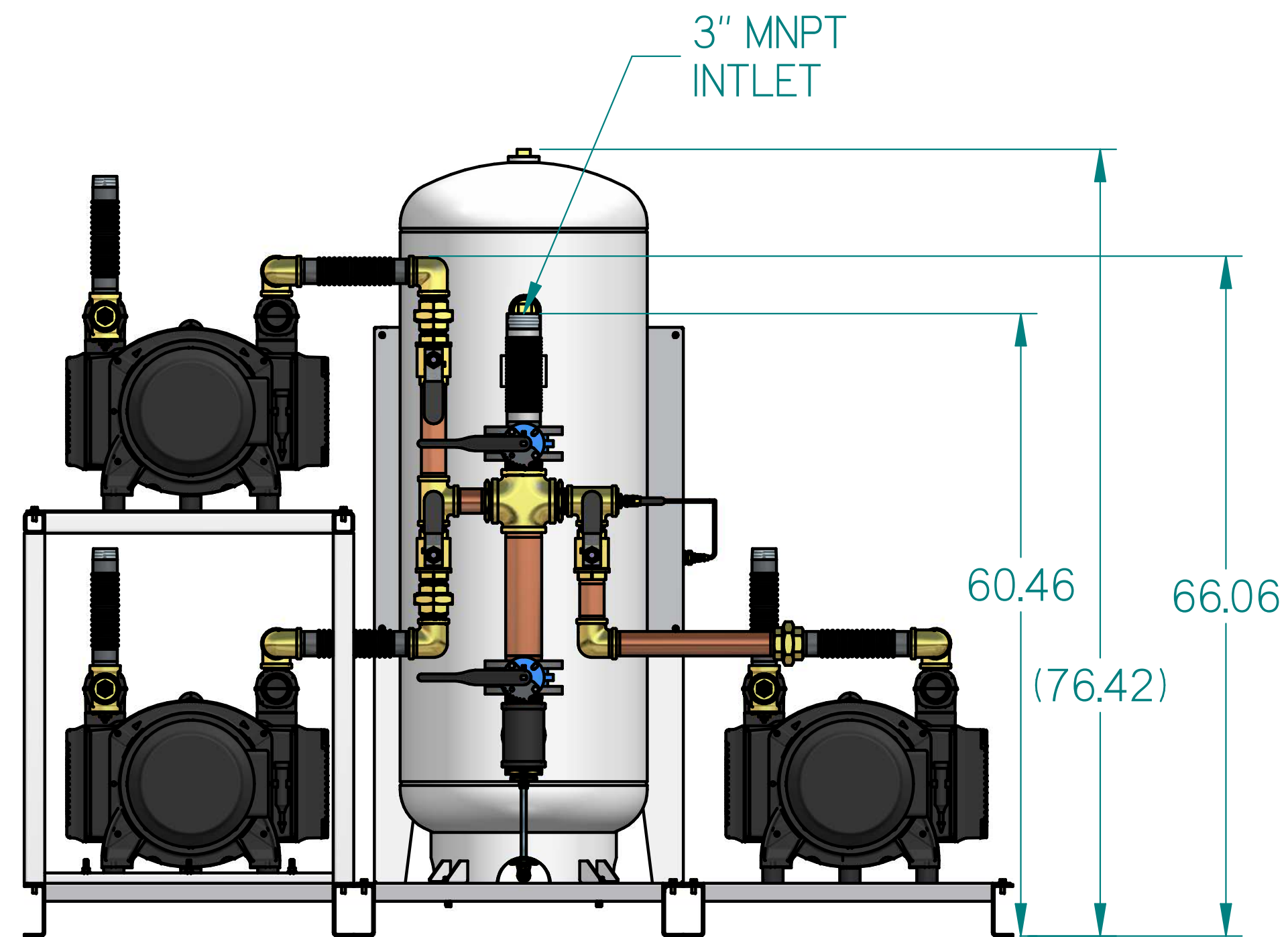
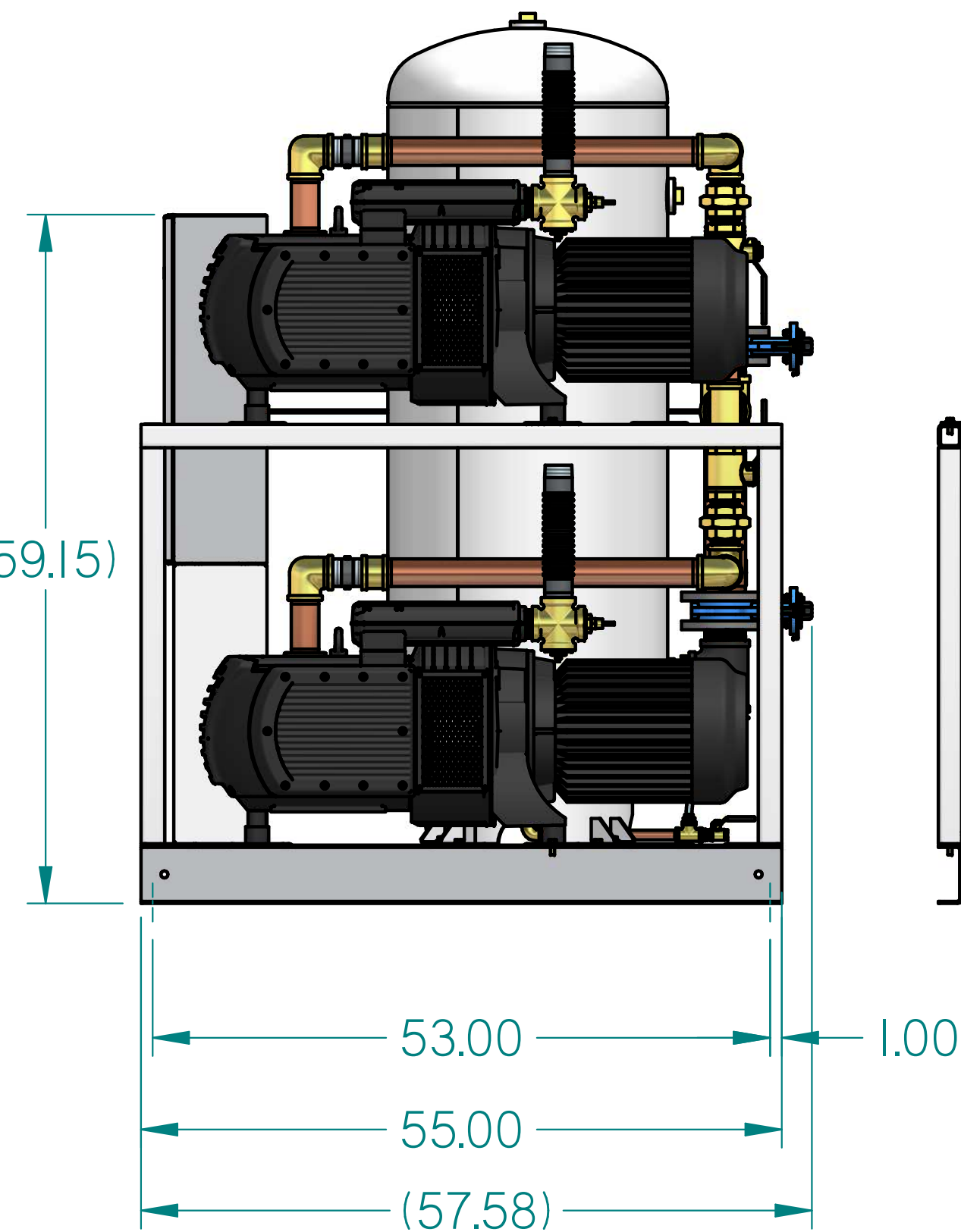
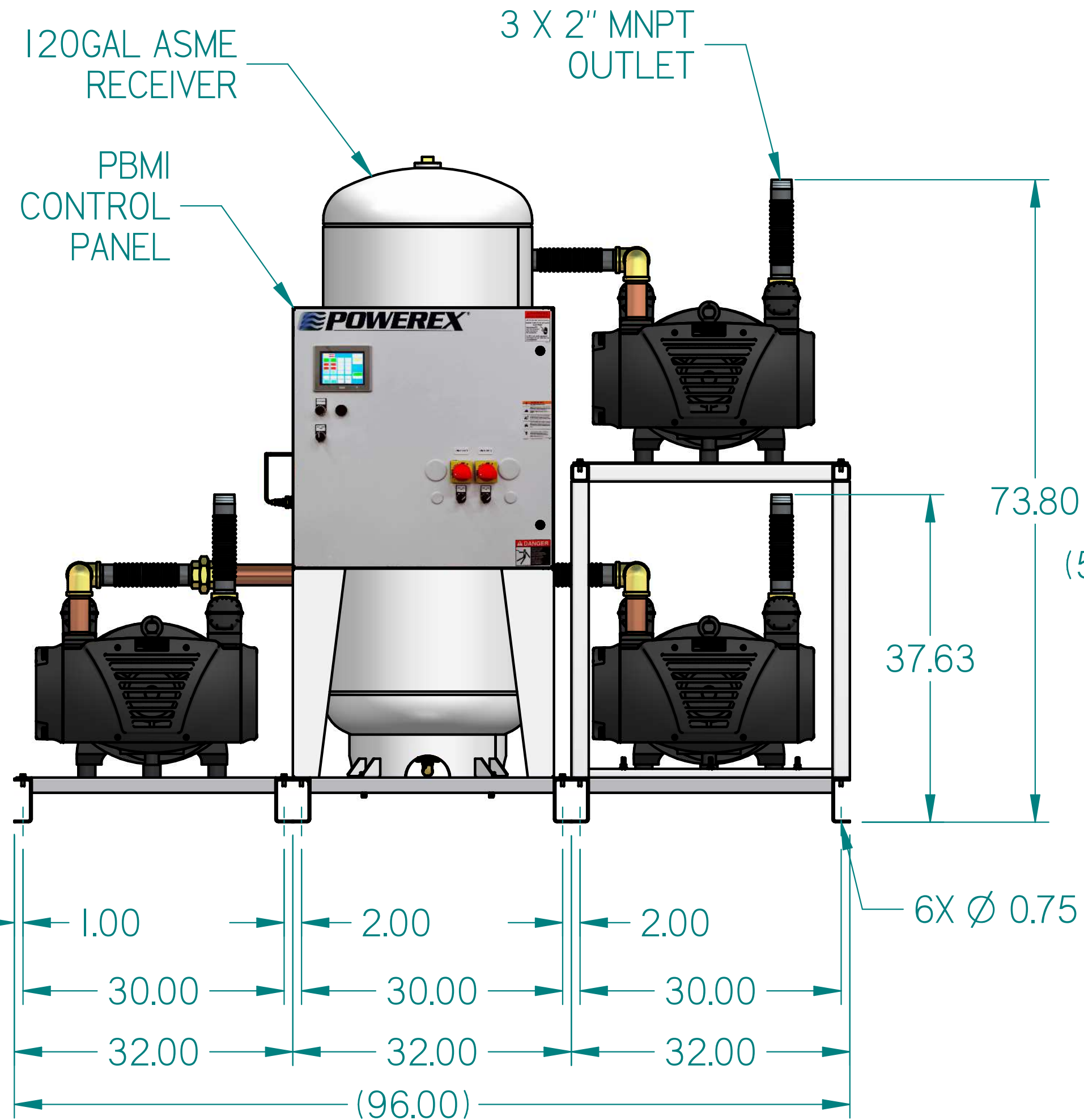
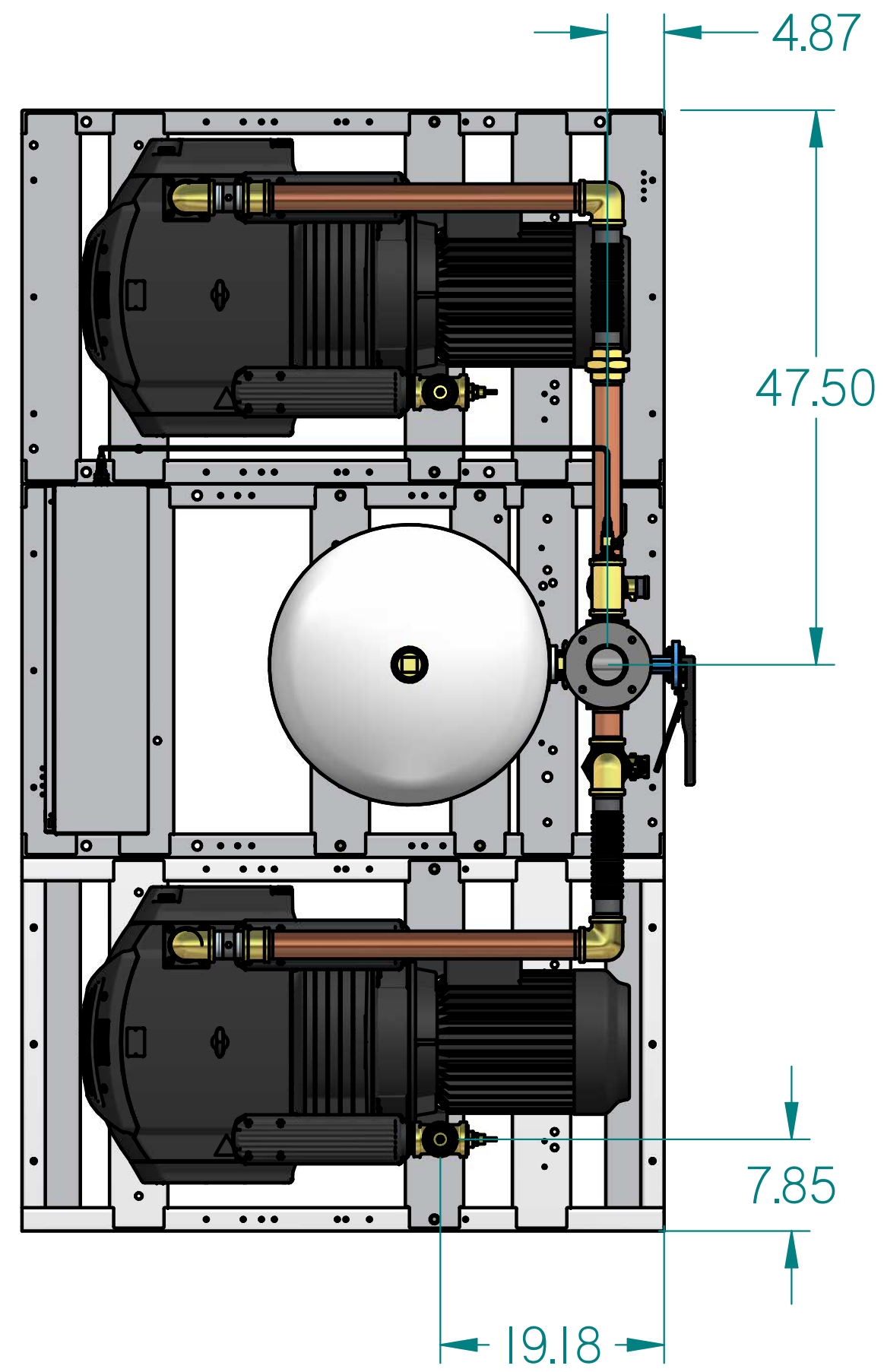


VOPT1004PI

10HP VACUUM 120GAL
TRIPLEX

REVISION NOTES		
DESCRIPTION	ECN	PR/NOR
3D RELEASE	PXEC0293	N/A



- NOTES:
- APPROXIMATE WEIGHT: 2718 lbrm
 - A MINIMUM OF 24" CLEARANCE IS RECOMMENDED AROUND THE ENTIRE UNIT. CLEARANCE FOR CONTROL PANEL SHALL BE IN ACCORDANCE WITH OSHA/NEC REQUIREMENTS.
 - SYSTEM DESIGNED IN COMPLIANCE WITH U.S. NFPA '99, LATEST EDITION.

SYMBOL LEGEND		DRAWINGS TO CONFORM TO CURRENT REVISION OF THE FOLLOWING ANSI STANDARDS:	
TOLERANCES NOT SPECIFIED:		F14.3 MULTI AND SECTIONAL VIEW DWGS	
0.00X ± .005	INCH	F14.5 DIMENSIONING AND TOLERANCING	
0.00X ± .005	INCH	DO NOT SCALE DRAWING FOR DIMENSIONS	
CONFIDENTIAL DISCLOSURE: This drawing is the property of POWEREX of the SCOTT FETTER COMPANY and is subject to return on demand. Its contents are confidential and must not be copied or submitted to outside parties for use or examination.		AUTHOR	APPROVALS ON FILE IN PLM
MATERIAL		TATA	06-03-2019
DESCRIPTION: 10HP VACUUM 120GAL TRIPLEX		DRAWING NUMBER: VOPT1004PI	REVISION: D

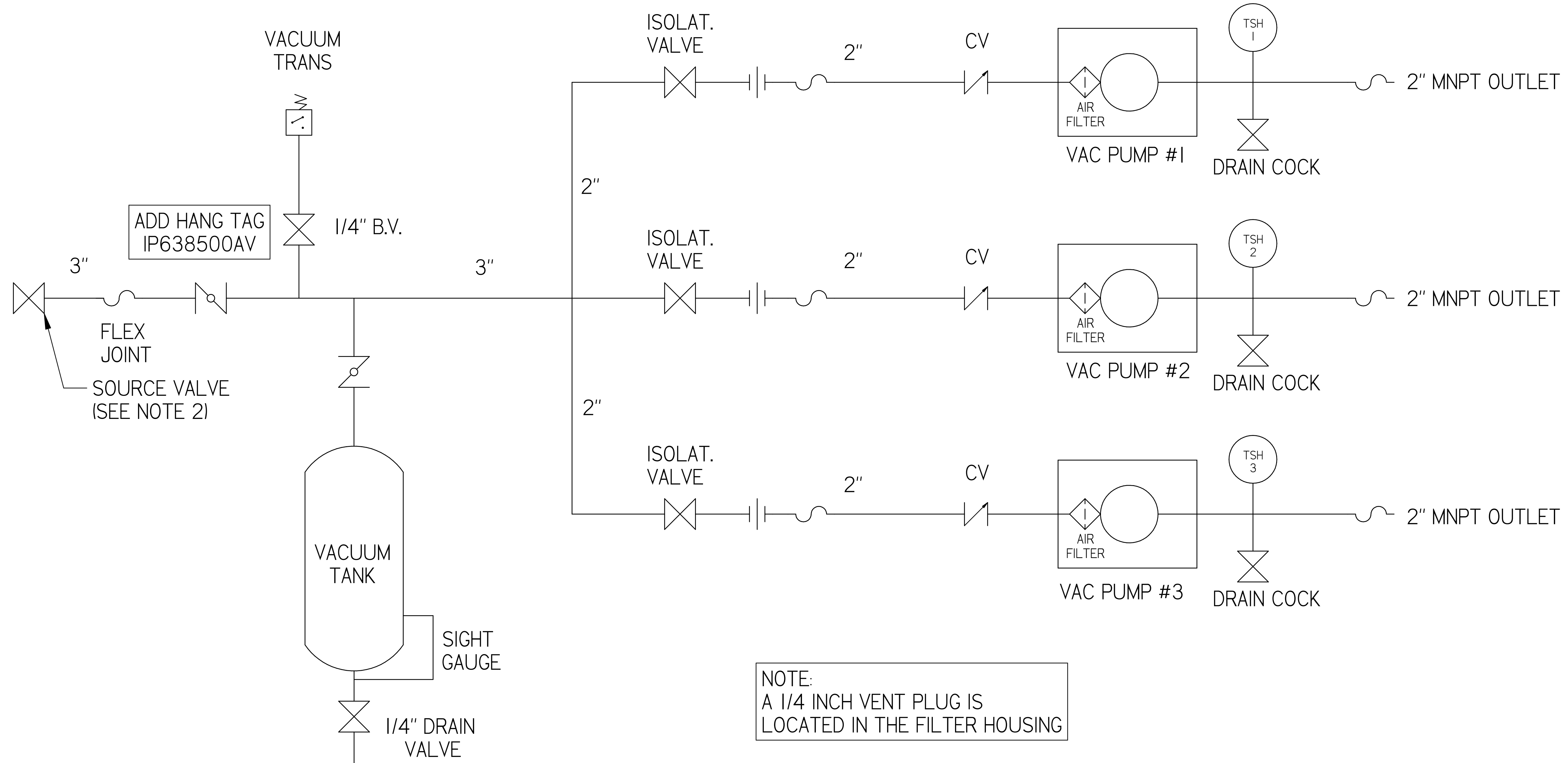


VOPT1004PI

10HP VACUUM 120GAL
TRIPLEX

REVISION NOTES

DESCRIPTION	ECN	PR/NOR
3D RELEASE	PXEC0293	N/A



NOTE:
A 1/4 INCH VENT PLUG IS
LOCATED IN THE FILTER HOUSING

LEGEND

	TEMP. SWITCH		VACUUM SWITCH
	AIR FILTER		CHECK VALVE
	BALL VALVE		FLEX LINE
	BUTTERFLY VALVE		UNION

- NOTES:
1) TSH - TEMPERATURE SWITCH HIGH
2) PER NFPA THE SYSTEM WILL REQUIRE A SOURCE VALVE (SUPPLIED BY OTHERS)

SYMBOL LEGEND		DRAWINGS TO CONFORM TO CURRENT REVISION OF THE FOLLOWING ANSI STANDARDS:	
TOLERANCES NOT SPECIFIED:		1/16" MULTI AND SECTIONAL VIEW DWGS 1/16" DIMENSIONING AND TOLERANCING	
0.001 ± .001	INCH	DO NOT SCALE DRAWING FOR DIMENSIONS	
0.005 ± .005	INCH	SHEET 2 OF 2	SCALE 1:1
CONFIDENTIAL DISCLOSURE This drawing is the property of POWEREX of the SCOTT FETTER COMPANY and is subject to return on demand. Its contents are confidential and must not be copied or submitted to outside parties for use or examination.		APPROVALS ON FILE IN PLM	
ITEM ID	TATA	ORIGINATION DATE	06-03-2019
		150 PRODUCTION DRIVE, HARRISON OH 45030 (938) 768-7079	
DESCRIPTION	10HP VACUUM 120GAL TRIPLEX	DRAWING NUMBER	VOPT1004PI
REVISION		SIZE	D