

8

7

6

5

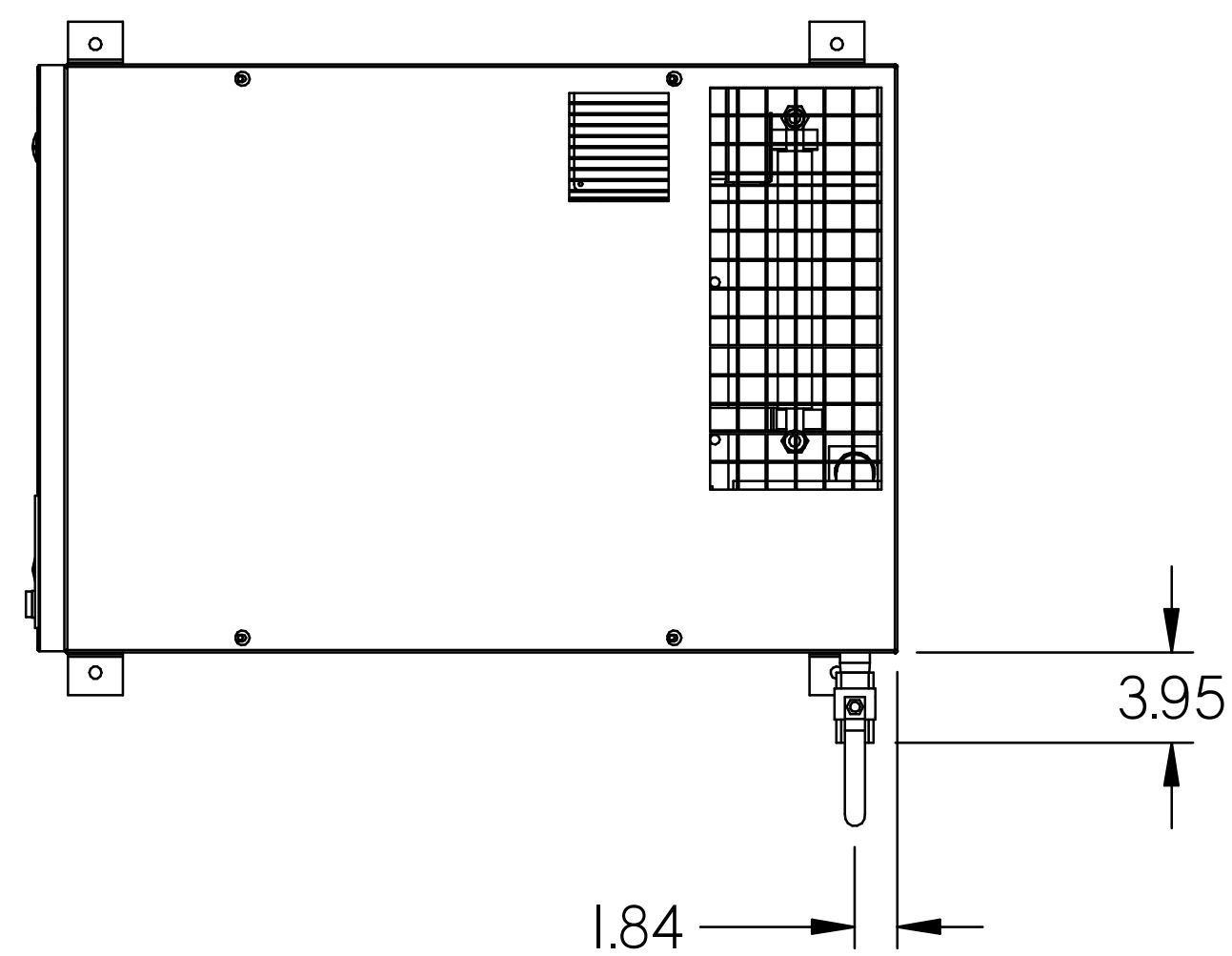
4

3

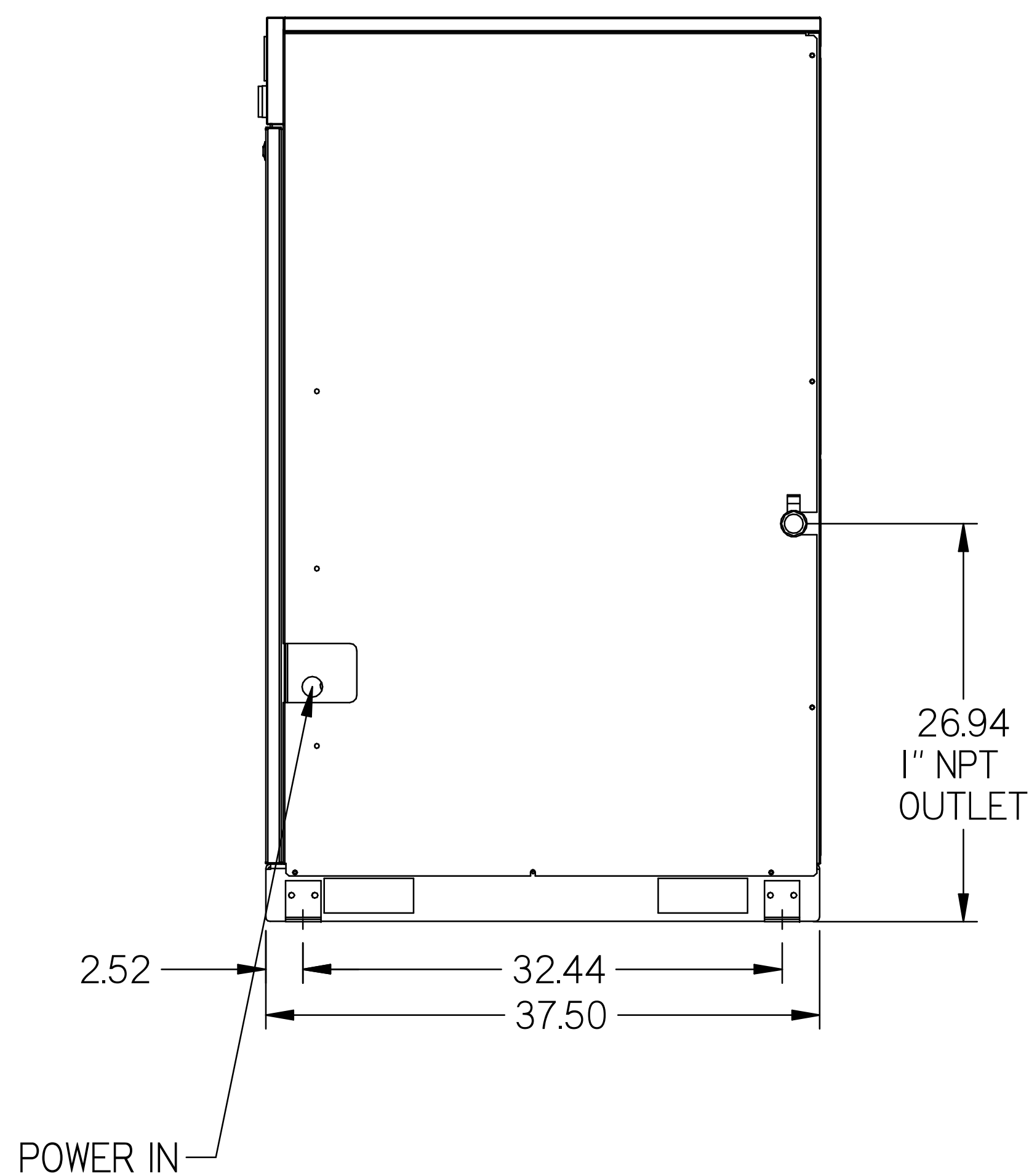
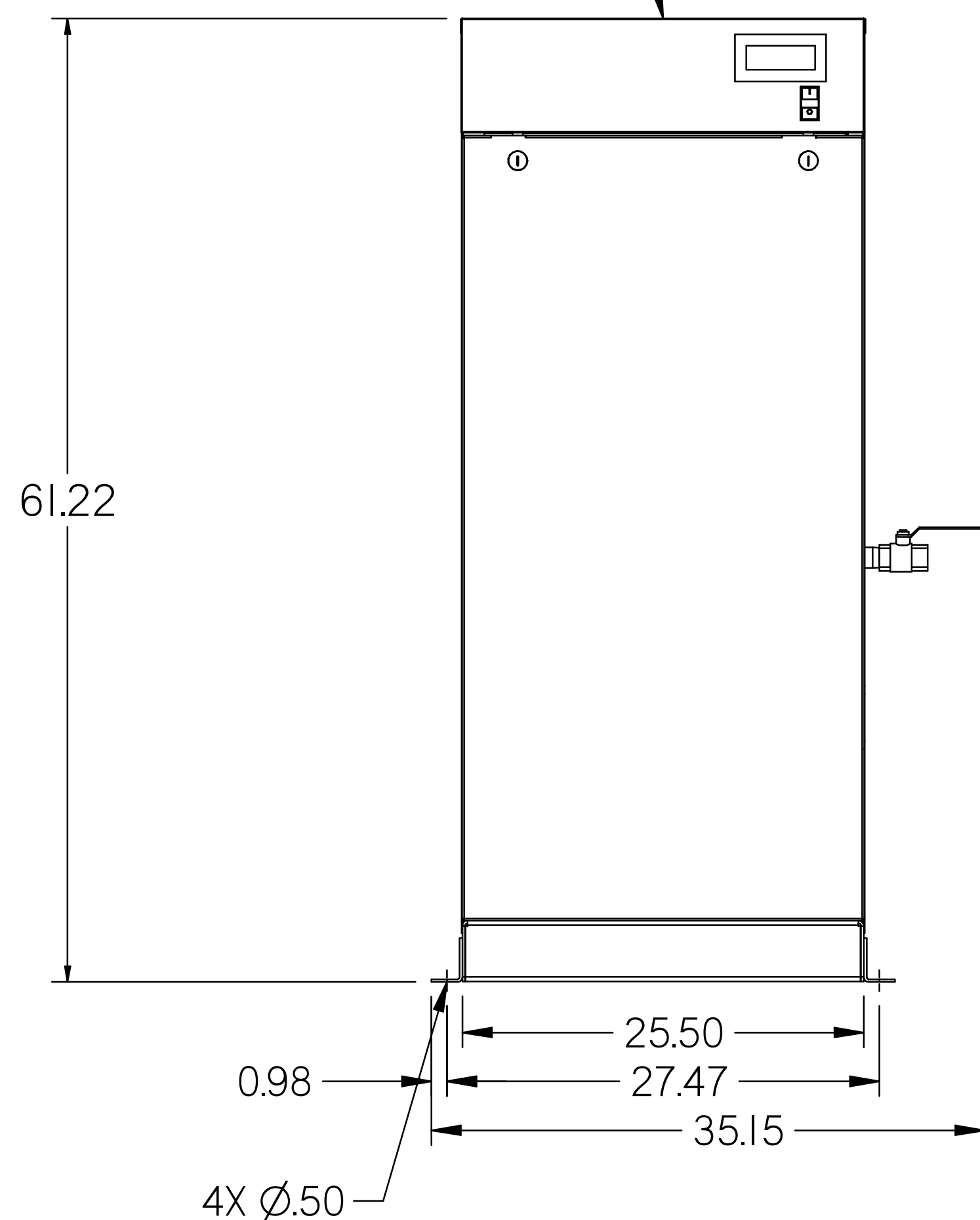
2

1

REV	ZONE	REVISION	DATE	ECN	NAME	CHKD
A-1	ALL	SUBMITTAL DRAWINGS	04/23/13	PREC0032	RK	AEK
B-1	ALL	RELEASE FOR PRODUCTION	04/23/13	PREC0032	RK	AEK
C-1	2,3 ALL	CONVERT TO POWEREX DRIVER	2/20/14	PREC0074	RK	AEK
D-1	4 CS	ADDED OUTLET BALL VALVE TO ENCLOSURE	6/10/15	PREC0093	GES	AEK
E	ALL	CHANGED TO TRIDENT DRIVERS, MORGANTON TANK, UPDATED TO TC	9/26/19	PREC0201	RJH	GES



SED1007 SCROLL
ENCLOSURE



- NOTE:
 1) SHEET 1 - SED1007 LAYOUT
 SHEET 2 - AIR TREATMENT LAYOUT
 SHEET 3 - PLAN VIEW
 SHEET 4 - FLOW SCHEMATIC

SYMBOL LEGEND ⊖ = MINUS DRAFT ⊕ = PLUS DRAFT ⊕ = ADDITIONAL CONTROL REQ'D HB = BRINELL HARDNESS		Drawings to conform to the current revision of the following ANSI standards: Y14.3 Multi and section view dgs Y14.9M Dimensioning and tolerancing	
TOLERANCES NOT SPECIFIED .XX # .XXX # < DEG. > #		AUTOCAD REL2009 LT INCH	
DO NOT SCALE DRAWING FOR DIMENSIONS Sheet 1 of 4 SCALE 1:8		DRAWN BY: RK CHECKED BY: AEK APPROVED BY: JA, CT 4/23/13, 4/23/13, 4/23/13, 4/23/13	
MATERIAL: N/A			
PART NAME: ENCLOSED SCROLL 90GAL DUAL DESICCANT LAB PACKAGE		DWG NO: LSE1003 SIZE: D	

8

7

6

5

4

3

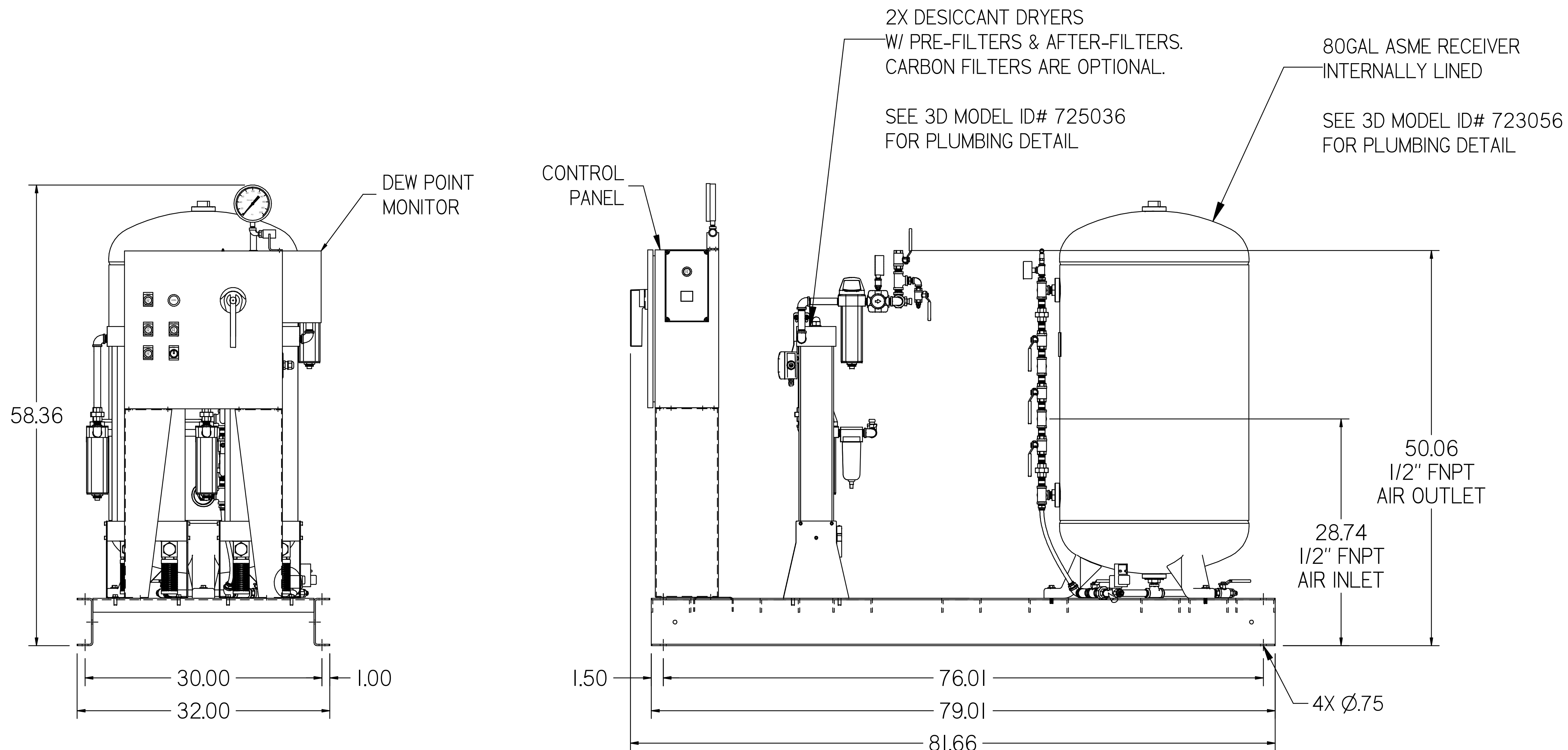
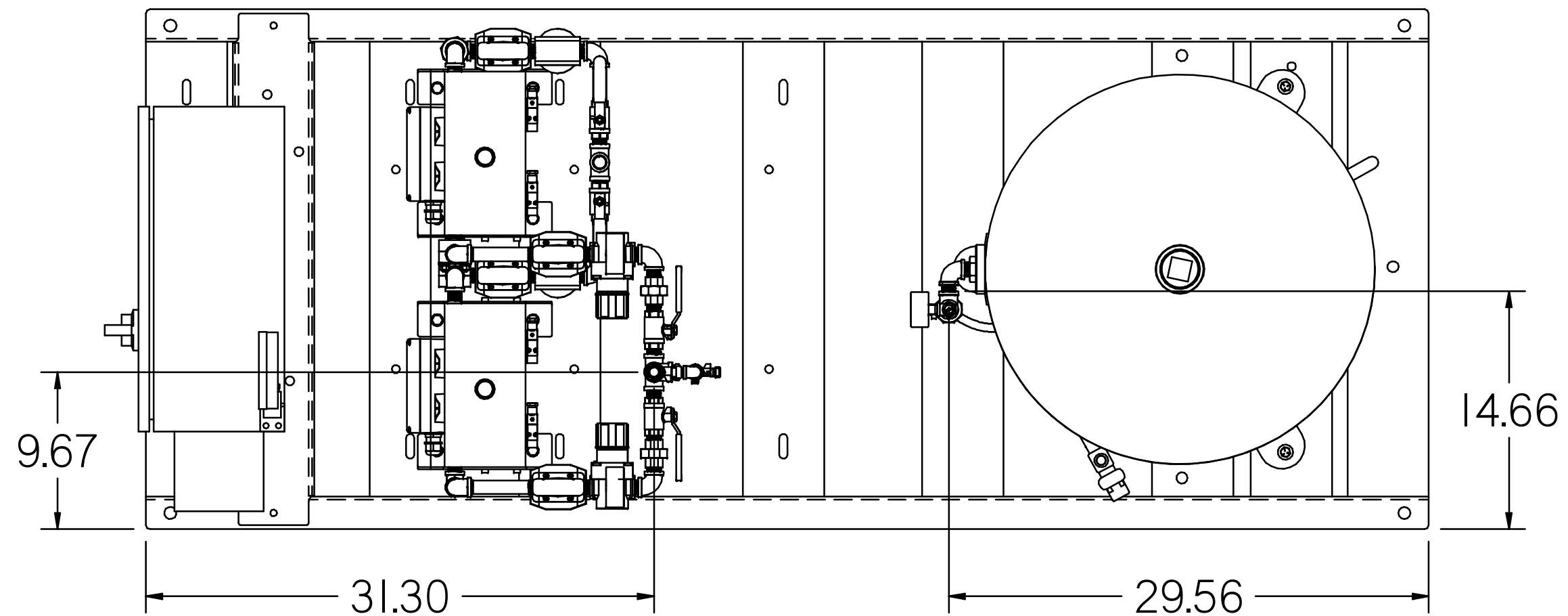
2

1

LSE1003.dwg

8 7 6 5 4 3 2 1

REV	ZONE	REVISION	DATE	ECN	NAME	CHKD
A-	ALL	SUBMITTAL DRAWINGS	11/22/13	PXEC0030	RK	AEK
B-1	ALL	RELEASE FOR PRODUCTION	04/23/13	PXEC0032	RK	AEK
C-1	2,3,ALL	CONVERT TO POWEREX DRYER	2/20/14	PXEC0074	RK	AEK
D-1	4,5	ADDED OUTLET BALL VALVE TO ENCLOSURE	6/10/15	PXEC0093	GES	AEK
E	ALL	CHANGED TO TRENT DRYERS, MORGANTON TANK, UPDATED TO TC	9/26/19	PXEC0260_0261	RLH	GES



NOTE:
 1) SHEET 1 - SEDI007 LAYOUT
 SHEET 2 - AIR TREATMENT LAYOUT
 SHEET 3 - PLAN VIEW
 SHEET 4 - FLOW SCHEMATIC

<small>SYMBOL LEGEND</small> ⊖ = MINUS DRAFT ⊕ = PLUS DRAFT HRC = BRINELL HARDNESS	<small>ADDITIONAL CONTROL REQ'D</small> <small>REL. 2008.1 LT</small> INCH	<small>Drawings to conform to the current revision of the following ANSI standards:</small> <small>Y14.3 Multi and sectional view drgs</small> <small>Y14.3M Dimensioning and tolerancing</small> DO NOT SCALE DRAWING FOR DIMENSIONS Sheet 2 of 4 SCALE 1:8
<small>TOLERANCES NOT SPECIFIED</small> .XX ± .XXX ± \angle (DEG) ±	<small>CONFIDENTIAL PROPRIETARY</small> <small>This drawing is the property of POWEREX, INC. of the SODIT FETZER COMPANY and subject to return on demand. Its contents are confidential and must not be copied or submitted to outside parties for use or examination.</small>	<small>DRWN BY</small> RK <small>CHEKED BY</small> AEK <small>APPROVED BY</small> JA CT 4/23/13 4/23/13 4/23/13 4/23/13
<small>MATERIAL</small> N/A	POWEREX <small>150 PRODUCTION DRIVE, HARRISON, OHIO 45030</small> <small>PH: 989-763-7979 FAX: 1-513-362-9125</small>	<small>DWG NO</small> LSE1003 <small>SIZE</small> D
<small>PART NAME</small> ENCLOSED SCROLL	<small>80GAL DUAL DESICCANT LAB PACKAGE</small>	

8 7 6 5 4 3 2 1

8

7

6

5

4

3

2

1

D

C

B

A

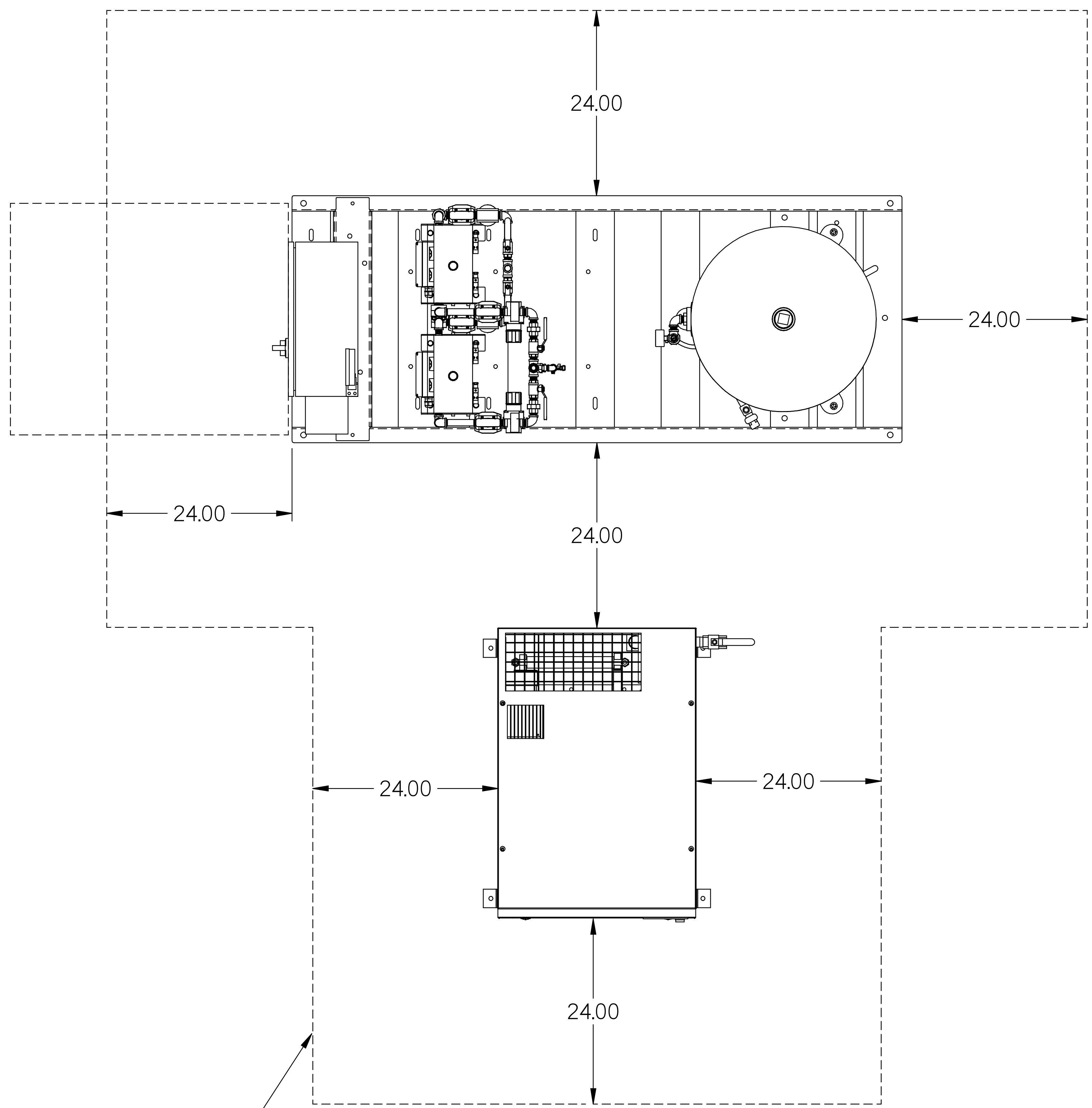
D

C

B

A

REV	ZONE	REVISION	DATE	ECN	NAME	CHKD
B-1	ALL	SUBMITTAL DRAWINGS	10/23/13	PXC0032	RK	AEK
B-1	ALL	RELEASE FOR PRODUCTION	04/23/13	PXC0032	RK	AEK
C-1	2,3,ALL	CONVERT TO POWEREX DRYER	2/20/14	PXC0074	RK	AEK
D-1	4,CS	ADDED OUTLET BALL VALVE TO ENCLOSURE	6/10/15	PXC0093	GES	AEK
E	ALL	CHANGED TO TRENT DRYERS, MORGANTON TANK, UPDATED TO TC	9/29/19	PXC0093.004	RSJ	GES



MINIMUM RECOMMENDED
MAINTENANCE CLEARANCE

- NOTE:
 1) SHEET 1 - SEDI007 LAYOUT
 SHEET 2 - AIR TREATMENT LAYOUT
 SHEET 3 - PLAN VIEW
 SHEET 4 - FLOW SCHEMATIC

SYMBOL LEGEND		= ADDITIONAL CONTROL REQ'D		Drawings to conform to the current revision of the following ANSI standards:	
⊖	= MINUS DRAFT	⊕	= PLUS DRAFT	⊖	= BRINELL HARDNESS
TOLERANCES NOT SPECIFIED		AUTOCAD REL2000.LT		DO NOT SCALE DRAWING FOR DIMENSIONS	
.XX	±	INCH		Sheet 3 of 4	
.XXX	±			SCALE 1: 8	
∠ DEG.	±				
CONFIDENTIAL DISCLOSURE This drawing is the property of POWEREX, INC. of the SCOTT FEITZER COMPANY and subject to return on demand. Its contents are confidential and must not be copied or submitted to outside parties for use or dissemination.		DRAWN BY	CHECKED BY	APPROVED BY	DATE
		RK	AEK	JA	CT
		4/23/13	4/23/13	4/23/13	4/23/13
MATERIAL		N/A		POWEREX	
PART NAME		ENCLOSED SCROLL		150 PRODUCTION DRIVE, HARRISON, OHIO 45030 PH: 800-704-7975 FAX: 419-337-3120	
DWG NO		LSE1003		SIZE	
				D	
				80GAL DUAL DESICCANT LAB PACKAGE	

8

7

6

5

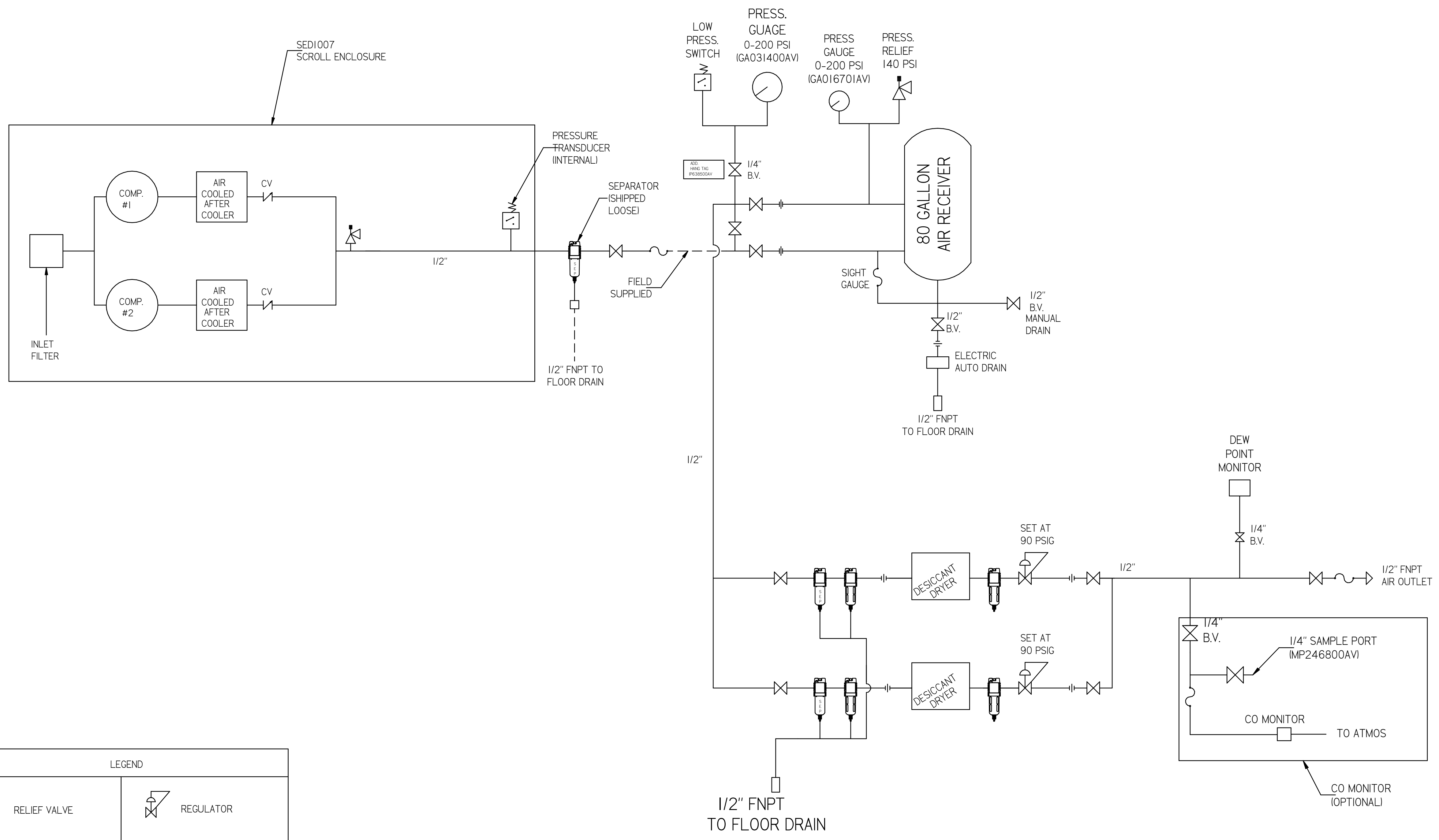
4

3

2

1

REV	ZONE	REVISION	DATE	ECN	NAME	CHKD
B-1	ALL	SUBMITTAL DRAWINGS	06/25/13		RK	AEK
B-4	ALL	RELEASE FOR PRODUCTION	04/23/13		RK	AEK
C-4	2,3 ALL	CONVERT TO POWEREX DRYER	2/20/14		RK	AEK
D-4	4 CS	ADDED OUTLET BALL VALVE TO ENCLOSURE	6/10/15		GES	AEK
E	ALL	CHANGED TO TRIDENT DRYERS, MORGANTON TANK, UPDATED TO TC	9/28/19		RLH	GES



LEGEND	
	RELIEF VALVE
	INTAKE FILTER
	AIR FILTER
	CARBON FILTER
	BALL VALVE
	3 WAY VALVE
	REGULATOR
	SEPARATOR
	FLEX LINE
	HIGH TEMP SWITCH
	UNION
	CHECK VALVE

NOTE:
 1) SHEET 1 - SEDI007 LAYOUT
 SHEET 2 - AIR TREATMENT LAYOUT
 SHEET 3 - PLAN VIEW
 SHEET 4 - FLOW SCHEMATIC

TOLERANCES NOT SPECIFIED .XX = .XXX = < DEG > =	AUTOCAD REL2008 LT INCH	DO NOT SCALE DRAWING FOR DIMENSIONS Sheet 4 of 4 SCALE 1:8
CONFIDENTIAL DISCLOSURE This drawing is the property of POWEREX, INC. of THE SCOTT FETZER COMPANY and subject to return on demand. Its contents are confidential and must not be copied or submitted to outside parties for use or examination.		DRWN BY: RK CHECKED BY: AEK 4/23/13
MATERIAL: N/A PART NAME: ENCLOSED SCROLL FLOW SCHEMATIC		APPROVED BY: JA CT 4/23/13 4/23/13 4/23/13 4/23/13 POWEREX 150 PRODUCTION DRIVE, HARRISON, OHIO 45030 Ph: 888-763-7979, FAX: (513) 367-3165
DWG NO: LSE1003		SIZE: D