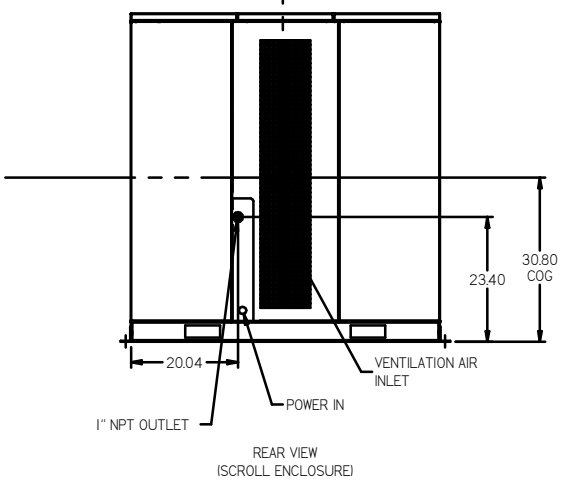
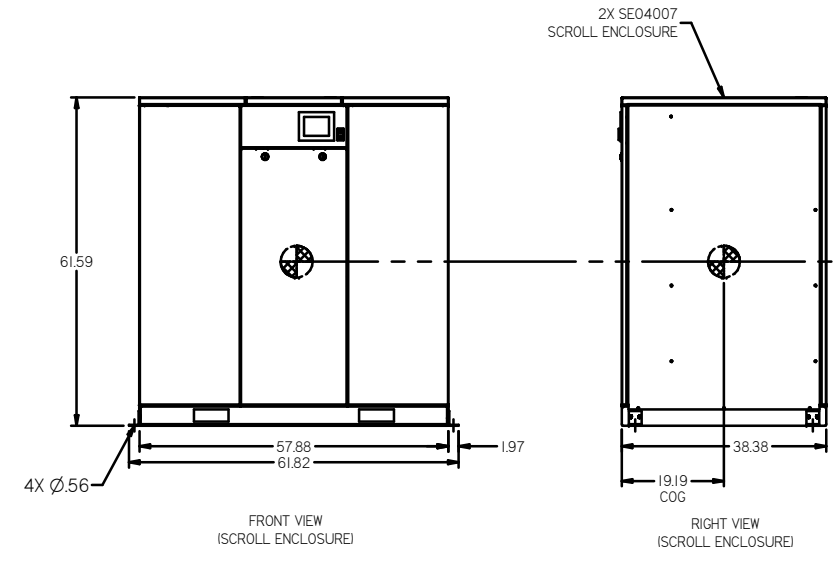
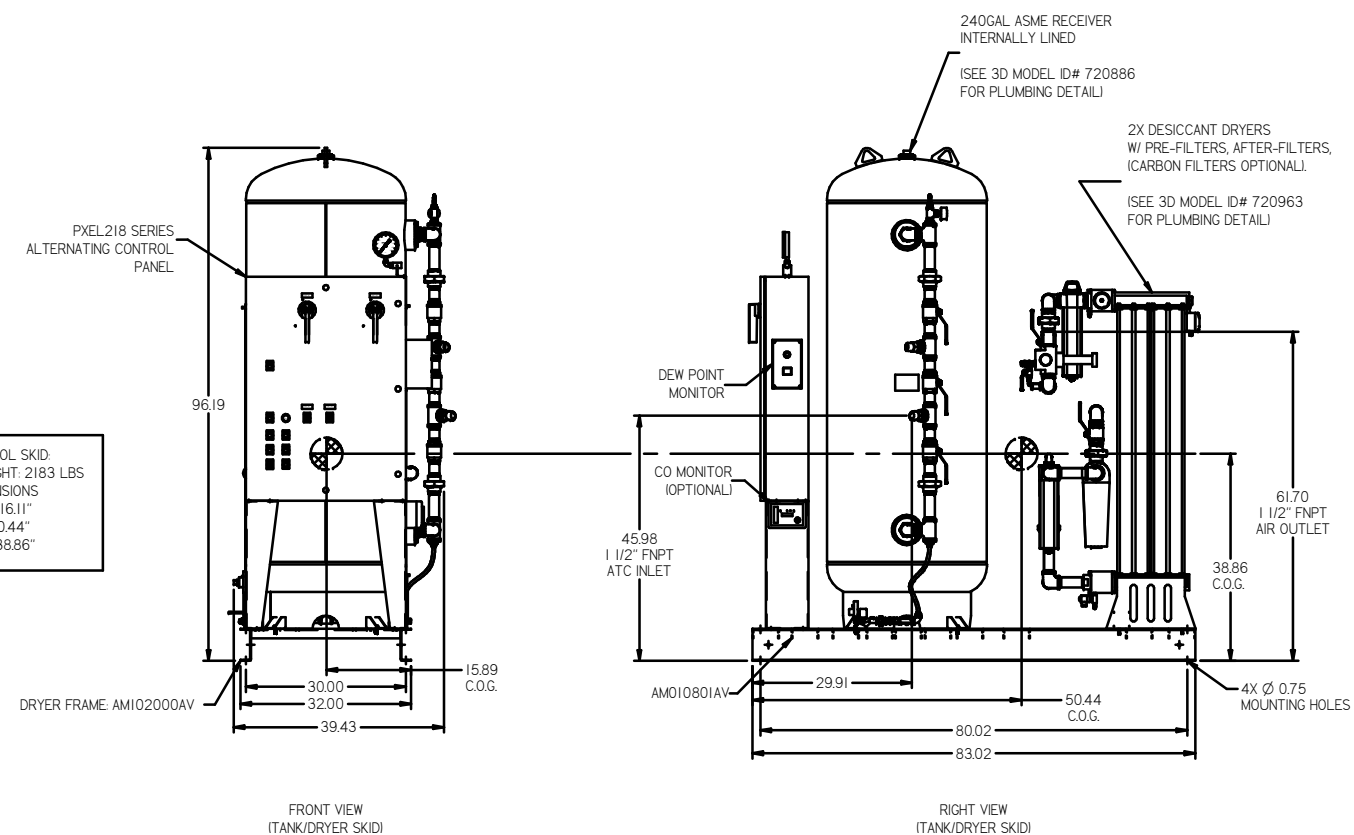
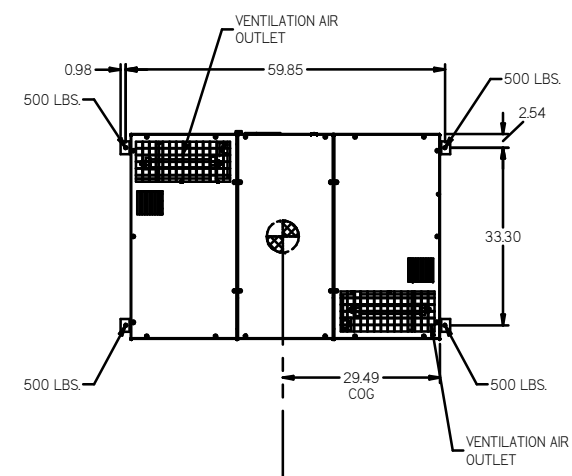
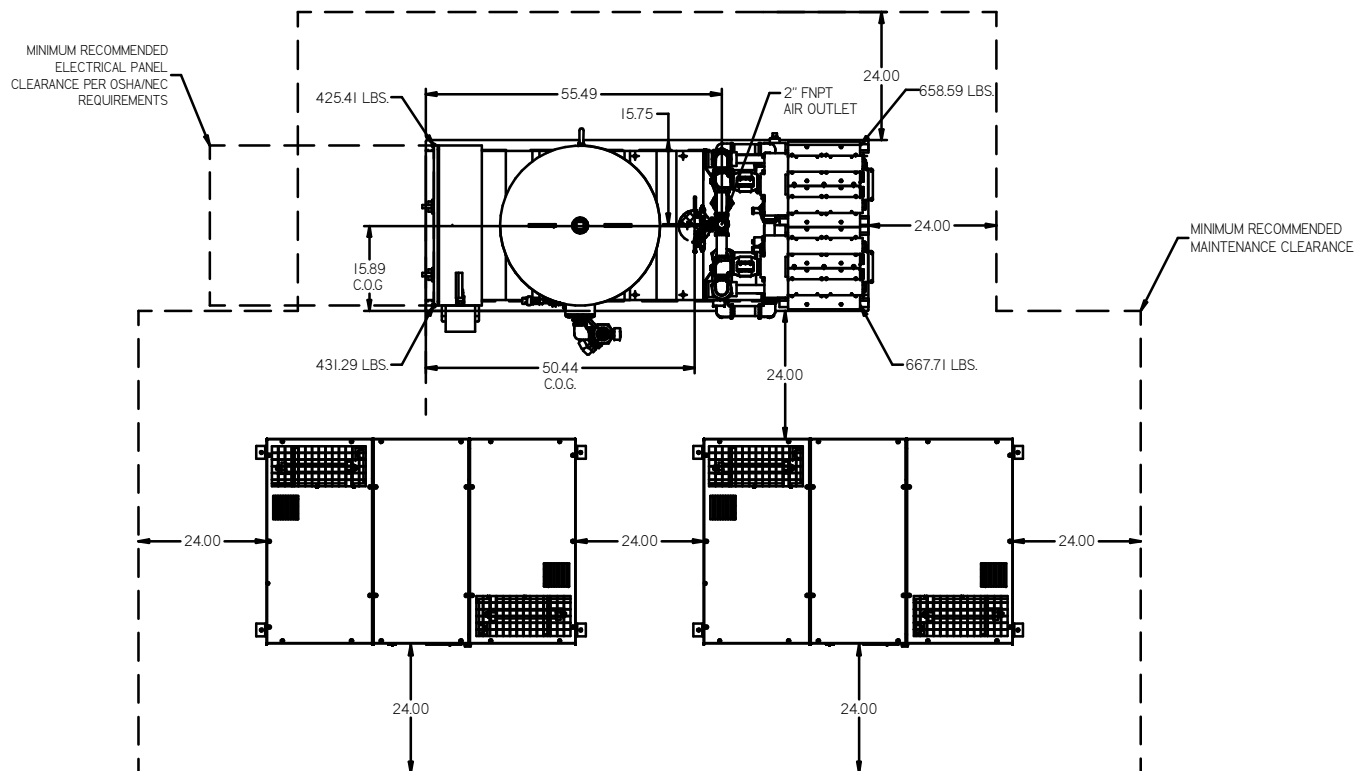


REV	ZONE	REVISION	DATE	ECN	NAME	CHD
0-1	ALL	RELEASE TO PRODUCT (0)	05/01/13		AEK	AEK
1-1	ALL	ADDED/UPDATED FLEX LINES ON FLOW				
2-1	2-D-5	ADDED MAIN PANEL PRESSURE SWITCHES	1/2/15		PREC0093	AEK
3-1	ALL	CORRECTED DIMENSIONS AND MAINTENANCE CLEARANCE				
4-1	ALL	ADDED CENTER OF GRAVITY INFORMATION	1/20/16		PREC0137	AEK
5-1	ALL	UPDATED TO NING DRIVERS	9/8/17		PREC0174	AEK
6-1	ALL	UPDATED SNAKE FILTER, ADDED BRACKETS	2/8/18		PREC0229	MH
7-1	4B	UPDATED FLOW FROM 3/4" TO 1/2"	4/10/18		PREC0229	MH
8	ALL	CHANGED TO TRENT DRIVERS, MORGANTON TANK	5/6/19		PREC0291	GES



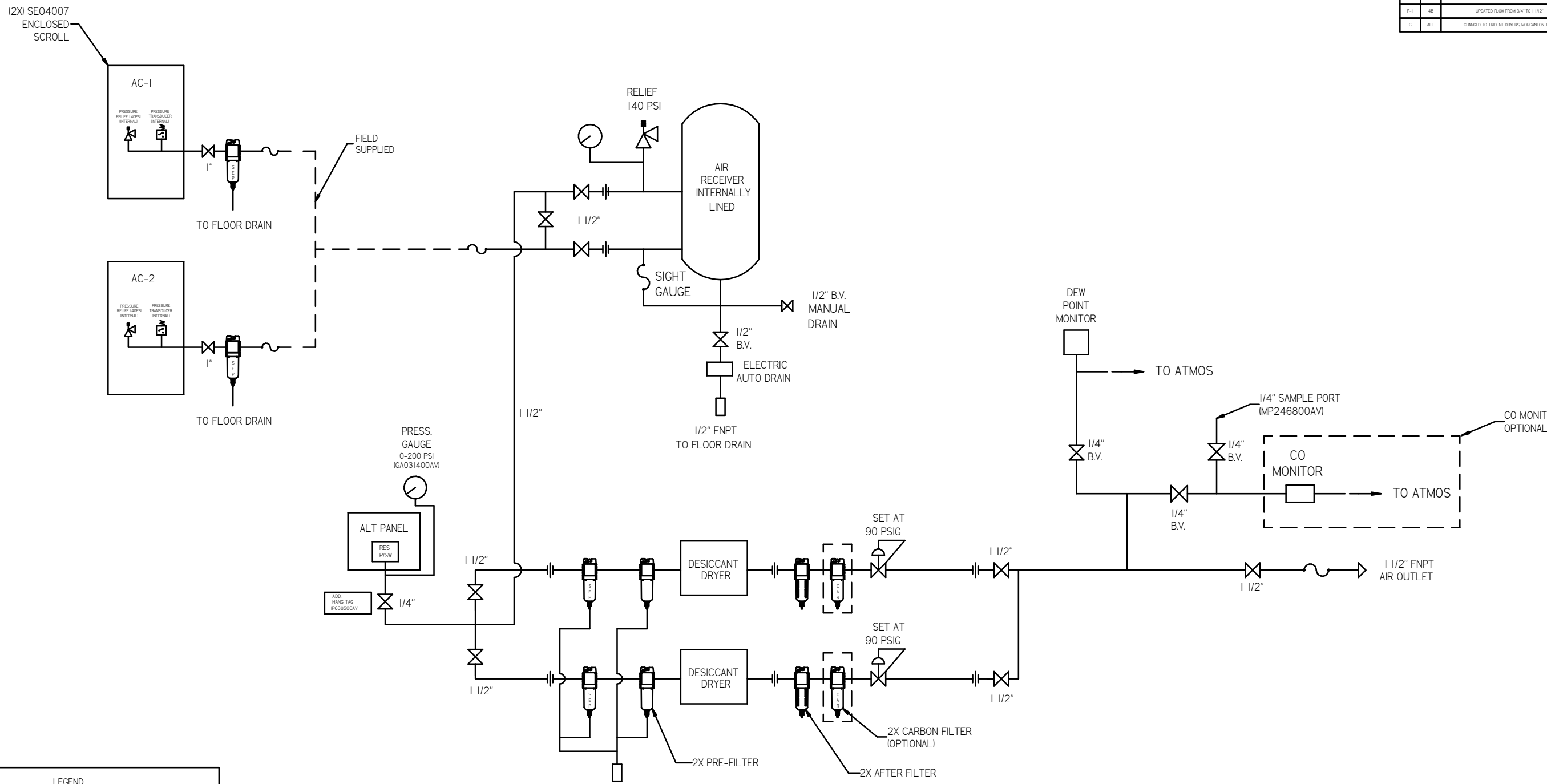
ATC/CONTROL SKID:
TOTAL WEIGHT: 2183 LBS
C.O.G. DIMENSIONS
X (FRONT): -16.11"
Y (RIGHT): 50.44"
Z (HEIGHT): 38.86"

SE04007 SCROLL ENCLOSURE:
TOTAL WEIGHT: 2000 LBS
C.O.G. DIMENSIONS
X (FRONT): -29.49"
Y (RIGHT): 19.19"
Z (HEIGHT): 30.81"

- NOTES
- 1) SHEET 1, UNIT LAYOUT.
 - 2) SHEET 2, UNIT FLOW SCHEMATIC.
 - 3) OUTLET CONNECTION 1-1/2" FNPT.
 - 4) POWER CONNECTION: 1-208, 230, OR 460 VOLT.
 - 5) WHEN PACKAGE IS INSTALLED INTO THE FACILITY, VERIFY THE INSTALLER REFERENCES TABLE 110.26 (A) (I) FOR MINIMUM WORKING AREA.

PROJ. LEGEND ⊖ = MINUS DRAFT ⊕ = PLUS DRAFT Ⓢ = ADDITIONAL CONTROL REQ'D Ⓜ = BRINELL HARDNESS		Drawings to conform to the current revision of the following ASME standards: Y14.3 Multi and sectional view legs Y14.5 Dimensioning and tolerancing	
TOLERANCES NOT SPECIFIED XX ± .005 XXX ± .010 4 DEC ± .015		AUTOCAD RELEASED LT INCH DO NOT SCALE DRAWING FOR DIMENSIONS Sheet 1 of 2 SCALE 1:18	
CONFIDENTIAL DISCLOSURE This drawing is the property of the POWEREX, INC. or the SCOTT FELTZER COMPANY and subject to return on demand. Its contents are confidential and must not be copied or submitted to outside parties for use or reproduction.		DRAWN BY: RK CHECKED BY: AEK APPROVED BY: JA, CT 4/23/13 4/23/13 4/23/13 4/23/13	
MATERIAL: N/A			
PART NAME: 60HP ENCLOSE SCROLL		DWG NO: LSED4006 SIZE: D	

REV	ZONE	REVISION	DATE	EON	NAME	CHKD
0-1	ALL	RELEASE TO PRODUCTION	4/23/13	PREC0093	AEK	KMD
B-1	2 ALL 2 D-5 1 ALL	ADDED APPLICATED FLEX LINES ON FLOW ADDED MAIN PANEL PRESSURE SWITCHES CORRECTED DIMENSIONS AND MOUNTING CLEARANCE	1/2/15	PREC0093	AEK	KMD
C-1	1 ALL	ADDED CENTER OF GRAVITY INFORMATION	1/20/16	PREC0137	AEK	GES
D-1	1 ALL	UPDATED TO MAKE DRYERS	9/8/17	PREC0174	AEK	GES
E-1	1 ALL	UPDATED SHAFER FILTER ADDED BRACKETS	3/8/18	PREC0229	MWH	GES
F-1	4B	UPDATED FLOW FROM 3/4" TO 1 1/2"	4/12/18	PREC0229	MWH	GES
G	ALL	CHANGED TO TRENK DRYERS, MOUNTAIN TANK	5/6/19	PREC0291	GES	MWH



LEGEND	
	RELIEF VALVE
	INTAKE FILTER
	AIR FILTER
	BALL VALVE
	CHECK VALVE
	REGULATOR
	SEPARATOR
	FLEX LINE
	HIGH TEMP SWITCH
	UNION

NOTES:
 1.) SHEET 1, UNIT LAYOUT.
 2.) SHEET 2, UNIT FLOW SCHEMATIC.
 3.) OUTLET CONNECTION: 1-1/2" FNPT.
 4.) POWER CONNECTION: 1- 208, 230, OR 460 VOLT.

<small>PHIL LEGEND</small> = MINUS DRAFT = PLUS DRAFT = ADDITIONAL CONTROL REQ'D = BRINELL HARDNESS		<small>Drawings to conform to the current revision of the following ANSI standards:</small> <small>Y14.3 Multi and sectional view dsgs.</small> <small>Y14.98 Dimensioning and tolerancing</small>												
<small>TOLERANCES NOT SPECIFIED</small> XX ± YYY ± Z (DEC) ±	AUTOCAD REL2008 LT INCH	DO NOT SCALE DRAWING FOR DIMENSIONS Sheet 2 of 2 SCALE 1:18												
<small>CONFIDENTIAL DISCLOSURE</small> <small>This drawing is the property of the POWEREX, INC. or the SCOTT FITZGER COMPANY and subject to return on demand. Its contents are confidential and must not be copied or submitted to outside parties for use or examination.</small>		<table border="1"> <tr> <th>DRAWN BY</th> <th>CHECKED BY</th> <th>APPROVED BY</th> <th>DATE</th> </tr> <tr> <td>RK</td> <td>AEK</td> <td>JA</td> <td>ET</td> </tr> <tr> <td>4/23/13</td> <td>4/23/13</td> <td>4/23/13</td> <td>4/23/13</td> </tr> </table>	DRAWN BY	CHECKED BY	APPROVED BY	DATE	RK	AEK	JA	ET	4/23/13	4/23/13	4/23/13	4/23/13
DRAWN BY	CHECKED BY	APPROVED BY	DATE											
RK	AEK	JA	ET											
4/23/13	4/23/13	4/23/13	4/23/13											
MATERIAL N/A PART NAME 60HP ENCLOSE SCROLL FLOW SCHEMATIC		 <small>155 PRODUCTION DRIVE, HARRISBURG, OHIO 45030</small> <small>PH: 800-769-7979 FAX: (614) 247-3100</small> Dwg No LSED4006 SIZE D												