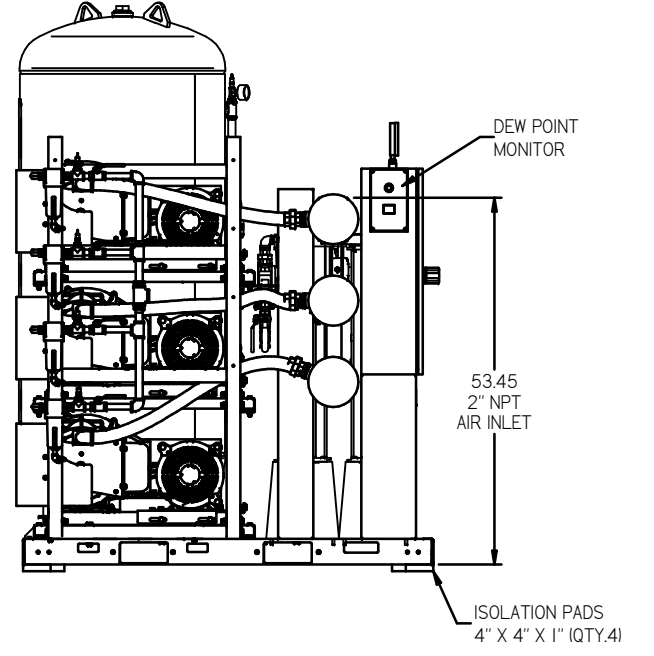
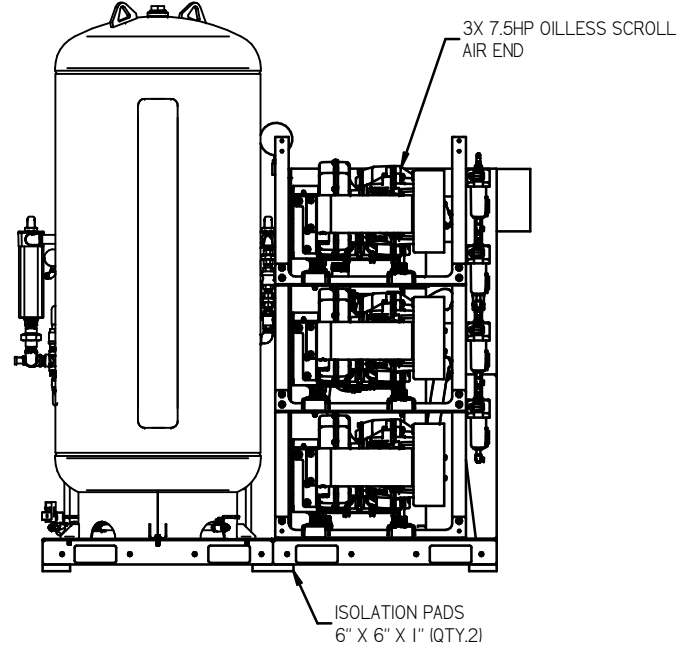
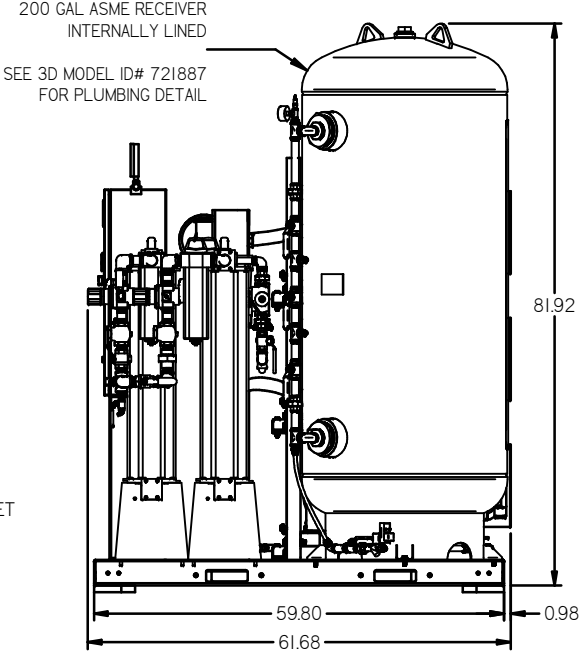
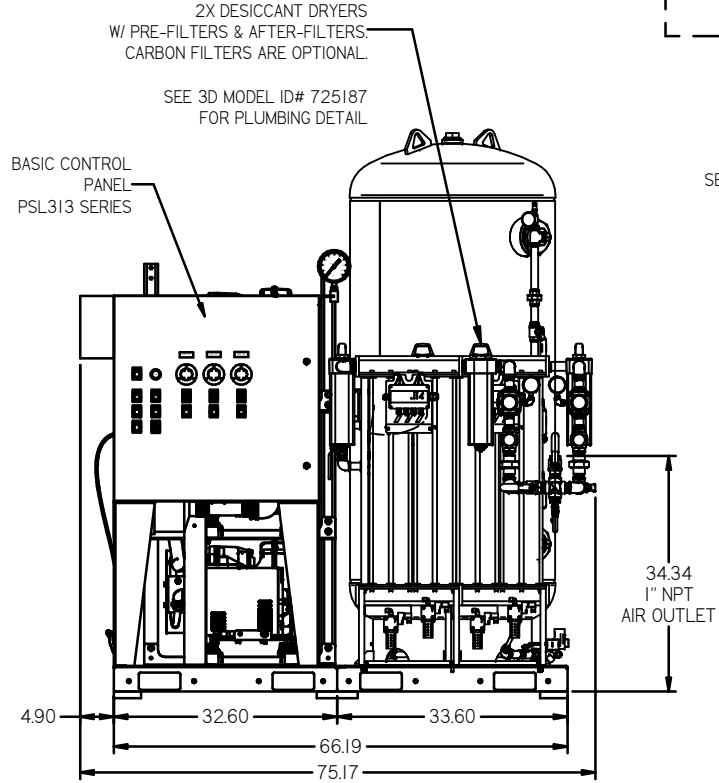
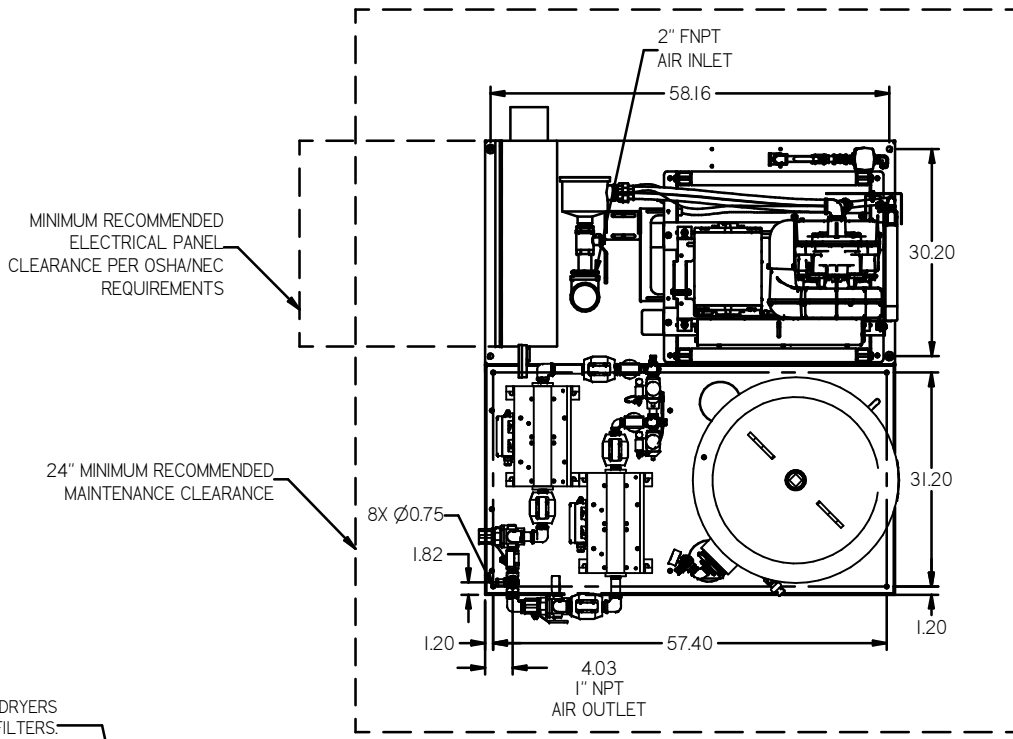


8 7 6 5 4 3 2 1

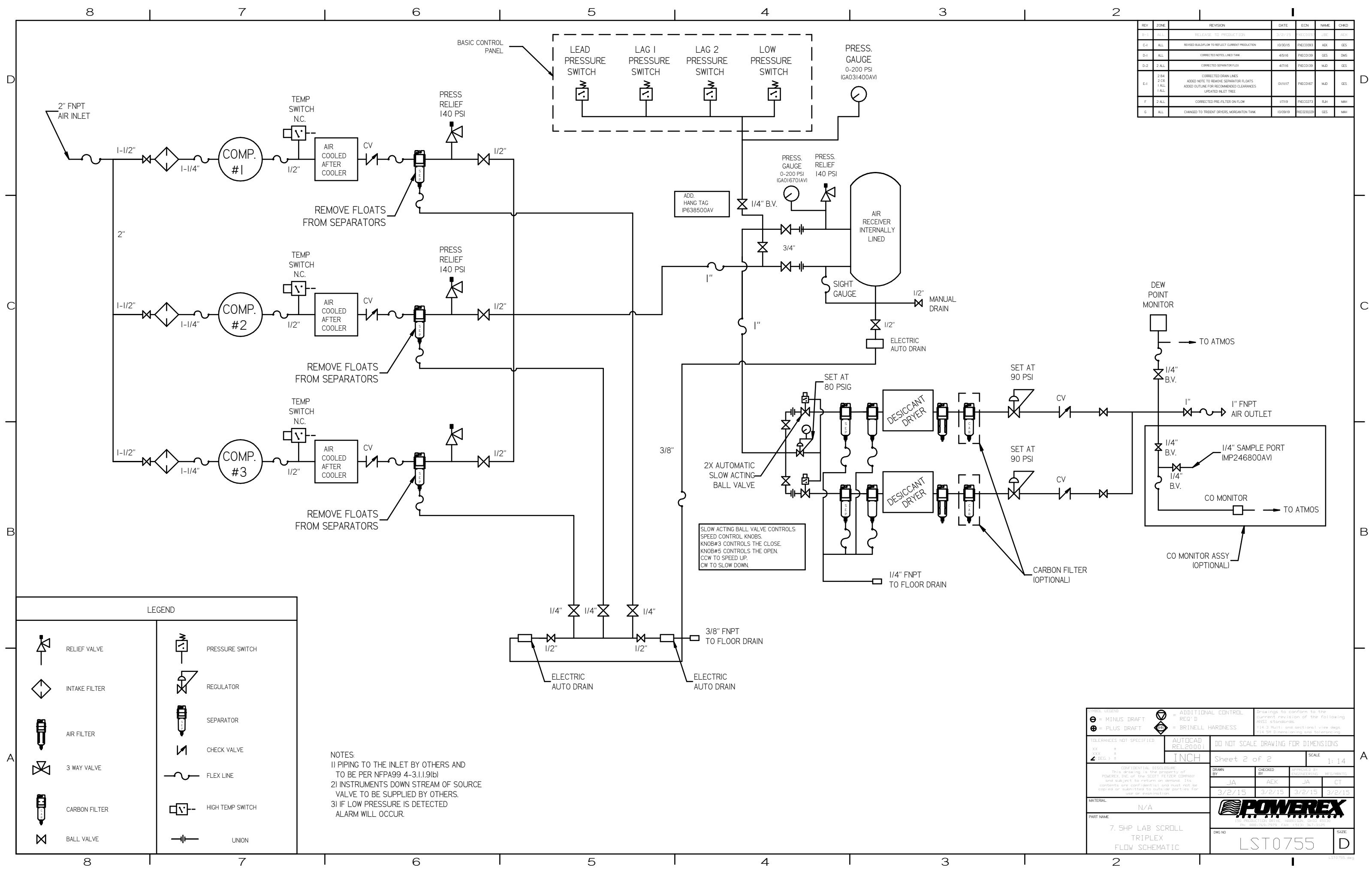
REV	ZONE	REVISION	DATE	ECN	NAME	CHKD
D-1	ALL	RELEASE TO PRODUCTION	10/2/15	100000	JBE	JBE
C-1	ALL	REVISED BUILD/FLW TO REFLECT CURRENT PRODUCTION	10/30/15	PHEC0093	AEK	GES
D-1	ALL	CORRECTED MODEL LINE ITEM	4/8/16	PHEC0139	GES	DM5
D-2	2 ALL	CORRECTED SEPARATOR FLEX	4/7/16	PHEC0139	MJD	GES
E-1	2 BA 2 CB 1 AL 1 ALL	CORRECTED DRAIN LINES ADDED NOTE TO REMOVE SEPARATOR FLOATS ADDED OUTLINE FOR RECOMMENDED CLEARANCES UPDATED INLET TREE	01/11/17	PHEC0167	MJD	GES
F	2 ALL	CORRECTED PRE-FILTER ON FLOW	1/7/19	PHEC0273	RJH	MH
G	ALL	CHANGED TO TRENT DRIVERS MORGANTON TANK	10/09/19	PHEC03009	GES	MH



NOTE: SYSTEM DESIGNED IN COMPLIANCE WITH US NFPA'99, LATEST EDITION.

<p>TOLERANCES NOT SPECIFIED</p> <p>XX ±</p> <p>XXX ±</p> <p>2 (DEC.) ±</p>	<p>AUTOCAD REL2000</p> <p>INCH</p>	<p>DO NOT SCALE DRAWING FOR DIMENSIONS</p> <p>Sheet 1 of 2</p> <p>SCALE 1:14</p>
<p>CONFIDENTIAL DISCLOSURE</p> <p>This drawing is the property of POWEREX, INC. or the SCOTT FETZER COMPANY and subject to return on demand. The contents are confidential and must not be copied or submitted to outside parties for use or reproduction.</p>	<p>DRWN BY: JBE</p> <p>CHECKED BY: AEK</p> <p>APPROVED BY: JA CT</p> <p>3/2/15 3/2/15 3/2/15 3/2/15</p>	<p>Drawings to conform to the current revision of the following ANSI standards:</p> <p>Y14.3 Multi and sectional view dgs.</p> <p>Y14.98 Dimensioning and tolerancing.</p>
<p>MATERIAL: N/A</p> <p>PART NAME: TRIPLEX LAB SCROLL 7.5HP, 200GAL BASEMOUNT DUPLEX DESICCANT</p>	<p>POWEREX</p> <p>150 PRODUCTION DRIVE, HARRISBURG, PA 17110</p> <p>TEL: 717-652-7070 FAX: 717-652-7425</p>	<p>DWG NO: LST0755</p> <p>SIZE: D</p>

8 7 6 5 4 3 2 1



REV	ZONE	REVISION	DATE	ECN	NAME	CHWD
B-1	ALL	RELEASED TO PRODUCT DEV	8/10/15		AEK	GES
C-1	ALL	REVISED BALFLOW TO REFLECT CURRENT PRODUCTION	10/30/15		AEK	GES
D-1	ALL	CORRECTED NOTES, LAG 2 TANK	4/5/16		AEK	GES
D-2	2, ALL	CORRECTED SEPARATOR FLEX	4/7/16		AEK	GES
E-1	2, 3, 4, 5, 6, 7, 8, ALL	CORRECTED DRAW LINES ADDED NOTE TO REMOVE SEPARATOR FLOATS ADDED OUTLINE FOR RECOMMENDED CLEARANCES UPDATED INLET TREE	10/11/17		AEK	GES
F	2, ALL	CORRECTED PRE-FILTER ON FLOW	1/7/19		AEK	GES
G	ALL	CHANGED TO TRENIT DRYERS, MORGANTON TANK	10/28/19		AEK	GES

LEGEND

	RELIEF VALVE		PRESSURE SWITCH
	INTAKE FILTER		REGULATOR
	AIR FILTER		SEPARATOR
	3 WAY VALVE		CHECK VALVE
	CARBON FILTER		FLEX LINE
	BALL VALVE		HIGH TEMP SWITCH
			UNION

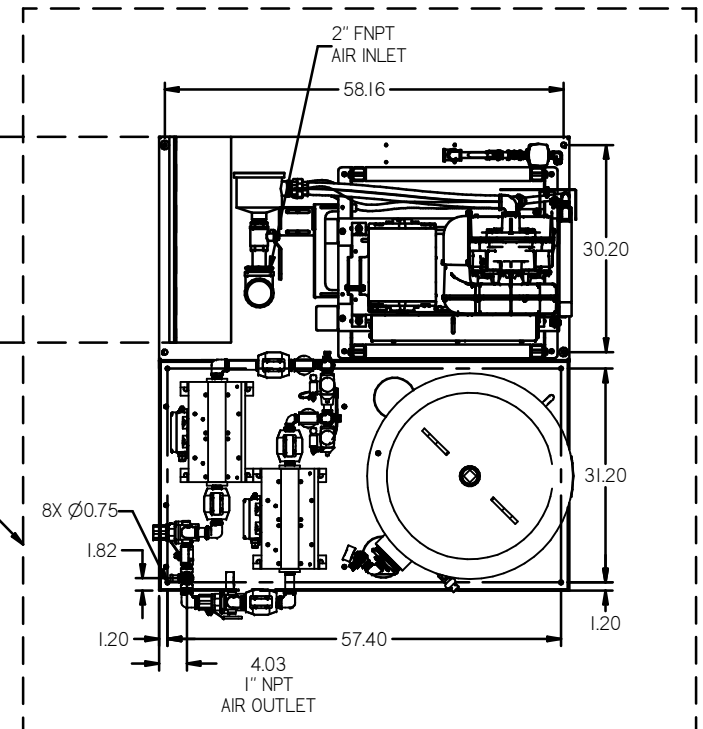
NOTES
 1) PIPING TO THE INLET BY OTHERS AND TO BE PER NFPA99 4-3.1.1.9(b)
 2) INSTRUMENTS DOWN STREAM OF SOURCE VALVE TO BE SUPPLIED BY OTHERS.
 3) IF LOW PRESSURE IS DETECTED ALARM WILL OCCUR.

<p>TOLERANCES NOT SPECIFIED</p> <p>XX ± .005 .XX ± .001 .0XX ± .0005</p>	<p>AUTOCAD REL2000</p>	<p>DO NOT SCALE DRAWING FOR DIMENSIONS</p> <p>Sheet 2 of 2</p> <p>SCALE 1:14</p>
<p>CONFIDENTIAL DISCLOSURE</p> <p>This drawing is the property of POWEREX, INC. of the SCOTT FELTZER COMPANY and subject to return or demand. Its contents are confidential and must not be copied or submitted to outside parties for use or examination.</p>	<p>DRWN BY JA</p> <p>CHECKED BY AEK</p> <p>APPROVED BY JA CT</p> <p>3/2/15 3/2/15 3/2/15 3/2/15</p>	<p>POWEREX</p> <p>7.5HP LAB SCROLL TRIPLEX FLOW SCHEMATIC</p> <p>DWG NO LST0755</p> <p>SIZE D</p>

REV	ZONE	REVISION	DATE	ECN	NAME	CHKD
B-1	ALL	RELEASE TO PRODUCTION	3/2/15		JBE	AEK
C-1	ALL	REVISED BALANCE TO REFLECT CURRENT PRODUCTION	10/30/15		AEK	GES
D-1	ALL	CORRECTED NOTES LINED TANK	4/5/16		AEK	DMS
D-2	2 ALL	CORRECTED SEPARATOR FLASK	4/7/16		AEK	GES
E-1	2 BA 2 CB 1 ALL 1 ALL	CORRECTED DRAIN LINES ADDED NOTE TO REMAIN SEPARATOR FLASKS ADDED OUTLINE FOR RECOMMENDED CLEARANCES UPDATED INLET TREE	01/11/17		AEK	GES
F	2 ALL	CORRECTED PRE-FILTER ON FLOW	1/7/19		AEK	MH
G	ALL	CHANGED TO TROCENT DRYERS MORGANTON TANK	10/09/19		AEK	MH

MINIMUM RECOMMENDED ELECTRICAL PANEL CLEARANCE PER OSHA/NEC REQUIREMENTS

24" MINIMUM RECOMMENDED MAINTENANCE CLEARANCE



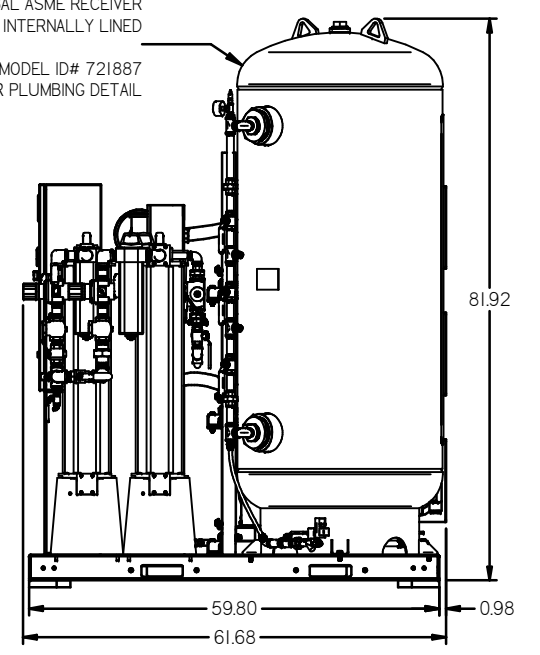
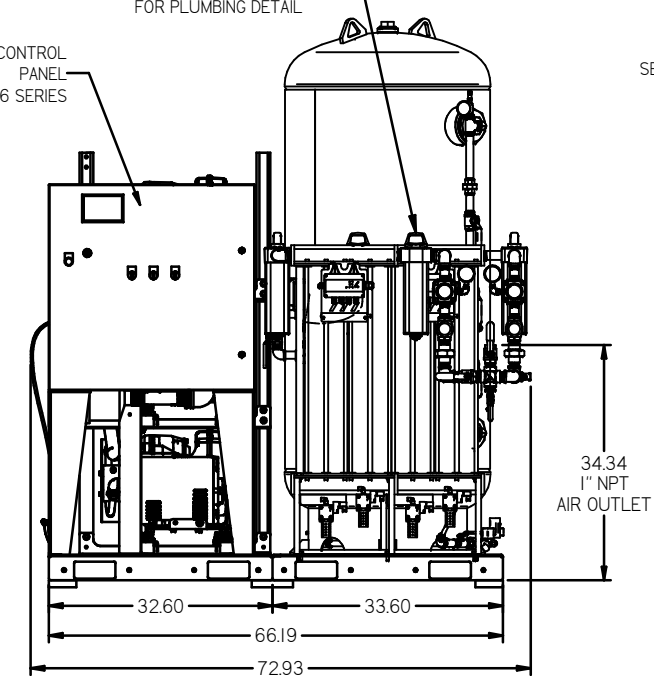
2X DESICCANT DRYERS W/ PRE-FILTERS & AFTER-FILTERS. CARBON FILTERS ARE OPTIONAL.

SEE 3D MODEL ID# 725187 FOR PLUMBING DETAIL

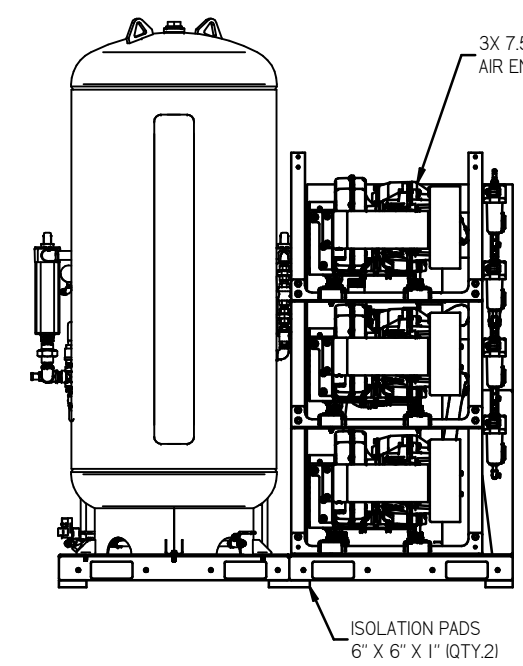
PREMIUM CONTROL PANEL PBMLA3S16 SERIES

200 GAL ASME RECEIVER INTERNALLY LINED

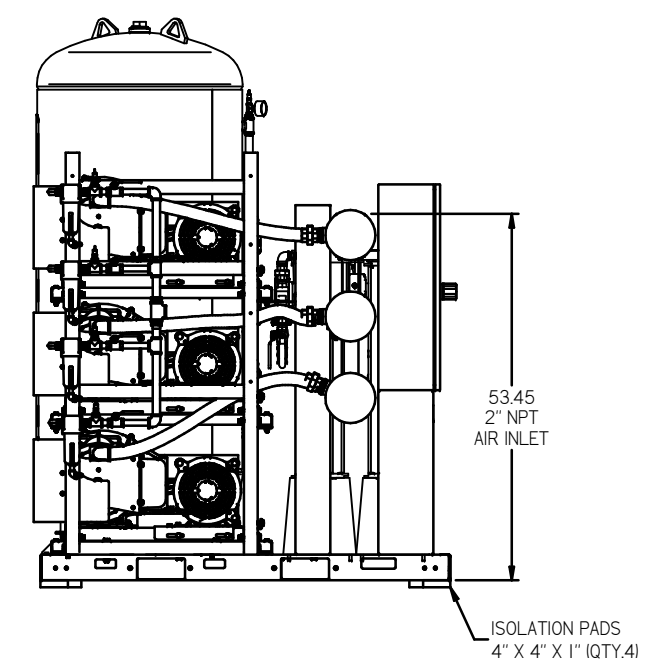
SEE 3D MODEL ID# 721887 FOR PLUMBING DETAIL



3X 7.5HP OILLESS SCROLL AIR END



53.45 2" NPT AIR INLET

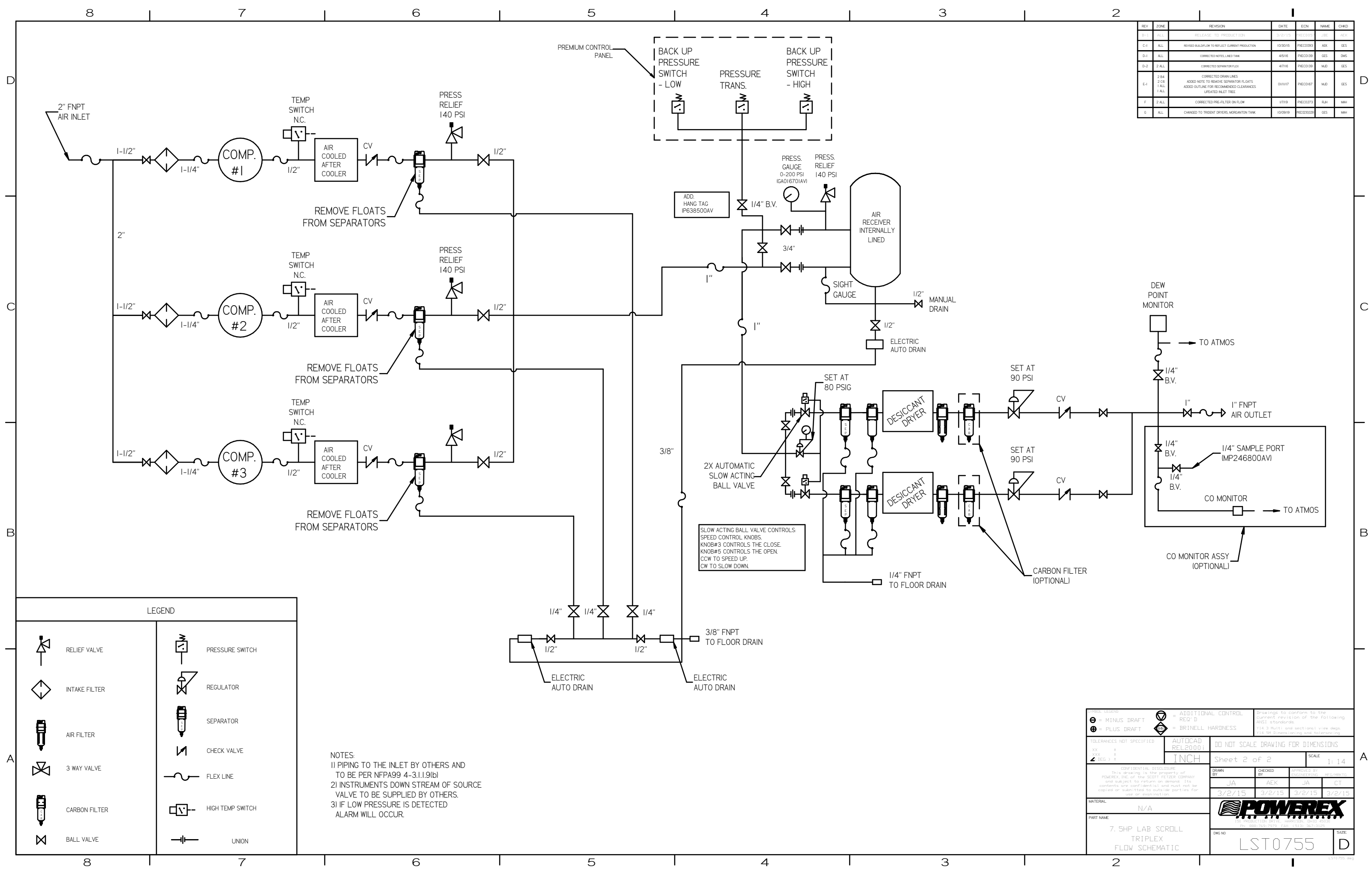


NOTE: SYSTEM DESIGNED IN COMPLIANCE WITH US NFPA'99, LATEST EDITION.

MINUS DRAFT PLUS DRAFT ADDITIONAL CONTROL REQ'D BRINELL HARDNESS	TOLERANCES NOT SPECIFIED XX ± XXX ± 4 DEC 1/3	AUTOCAD REL2000 INCH DO NOT SCALE DRAWING FOR DIMENSIONS Sheet 1 of 2 SCALE 1:14	Drawings to conform to the current revision of the following standards: ASME Y14.3 Multi and sectional view dra. ASME Y14.9 Dimensioning and tolerancing
CONFIDENTIAL DISCLOSURE This drawing is the property of POWEREX, Inc. or THE SCOTT FELZER COMPANY and subject to return on demand. Its contents are confidential and must not be copied or submitted to outside parties for use or reproduction.		DRAWN BY: JBE CHECKED BY: AEK APPROVED BY: JA, CT 3/2/15 3/2/15 3/2/15 3/2/15	MATERIAL: N/A PART NAME: TRIPLEX LAB SCROLL 7.5HP, 200GAL. BASEMOUNT DUPLEX DESICCANT DWG NO: LST0755 SIZE: D



REV	ZONE	REVISION	DATE	ECN	NAME	CHD
B-1	ALL	RELEASE TO PRODUCT DEV	3/2/15	PREC0035	JEK	AEK
C-1	ALL	REVISED BALLOON TO REFLECT CURRENT PRODUCTION	10/30/15	PREC0093	AEK	GES
D-1	ALL	CORRECTED NOTES LINED TANK	4/5/16	PREC0139	GES	BMS
D-2	ALL	CORRECTED SEPARATOR FLEX	4/7/16	PREC0139	MLD	GES
E-1	2 BR 2 CB 1 ALL	CORRECTED DOWN LINES ADDED NOTE TO REMOVE SEPARATOR FLOATS ADDED OUTLINE FOR RECOMMENDED CLEARANCES UPDATED INLET TREE	01/11/17	PREC0167	MLD	GES
F	2 ALL	CORRECTED PRE-FILTER ON FLOW	1/7/19	PREC0273	RLH	MHH
G	ALL	CHANGED TO TREAT DRYERS MORGANTON TANK	10/08/19	PREC03029	GES	MHH



LEGEND

	RELIEF VALVE		PRESSURE SWITCH
	INTAKE FILTER		REGULATOR
	AIR FILTER		SEPARATOR
	3 WAY VALVE		CHECK VALVE
	CARBON FILTER		FLEX LINE
	BALL VALVE		HIGH TEMP SWITCH
			UNION

NOTES:
 1) PIPING TO THE INLET BY OTHERS AND TO BE PER NFPA99 4-3.1.1.9(b)
 2) INSTRUMENTS DOWN STREAM OF SOURCE VALVE TO BE SUPPLIED BY OTHERS.
 3) IF LOW PRESSURE IS DETECTED ALARM WILL OCCUR.

TOLERANCES NOT SPECIFIED XX ± .005 XXX ± .010 XXX ± .015 XXX ± .020	AUTOCAD REL2000	DO NOT SCALE DRAWING FOR DIMENSIONS Sheet 2 of 2 SCALE 1:14
CONFIDENTIAL DISCLOSURE This drawing is the property of POWEREX, INC. of the SCOTT FETZER COMPANY and subject to return on demand. Its contents are confidential and must not be copied or submitted to outside parties for use or reproduction.		DRAWN BY: JA CHECKED BY: AEK APPROVED BY: JA DATE: 3/2/15
MATERIAL: N/A PART NAME: 7.5HP LAB SCROLL TRIPLEX FLOW SCHEMATIC		 Dwg No: LST0755 SIZE: D