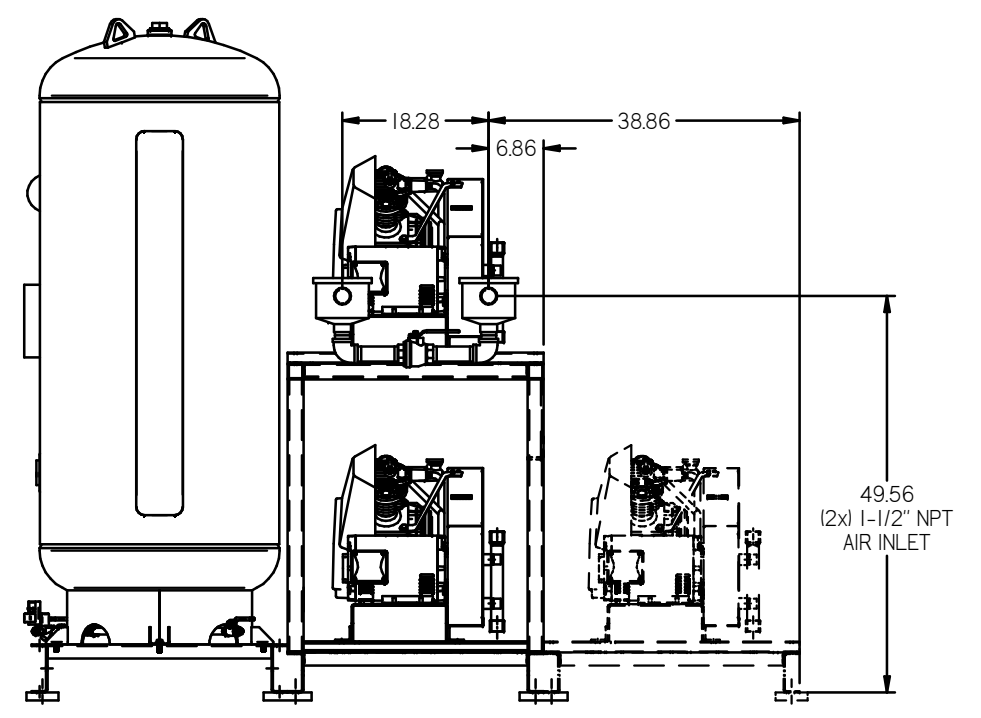
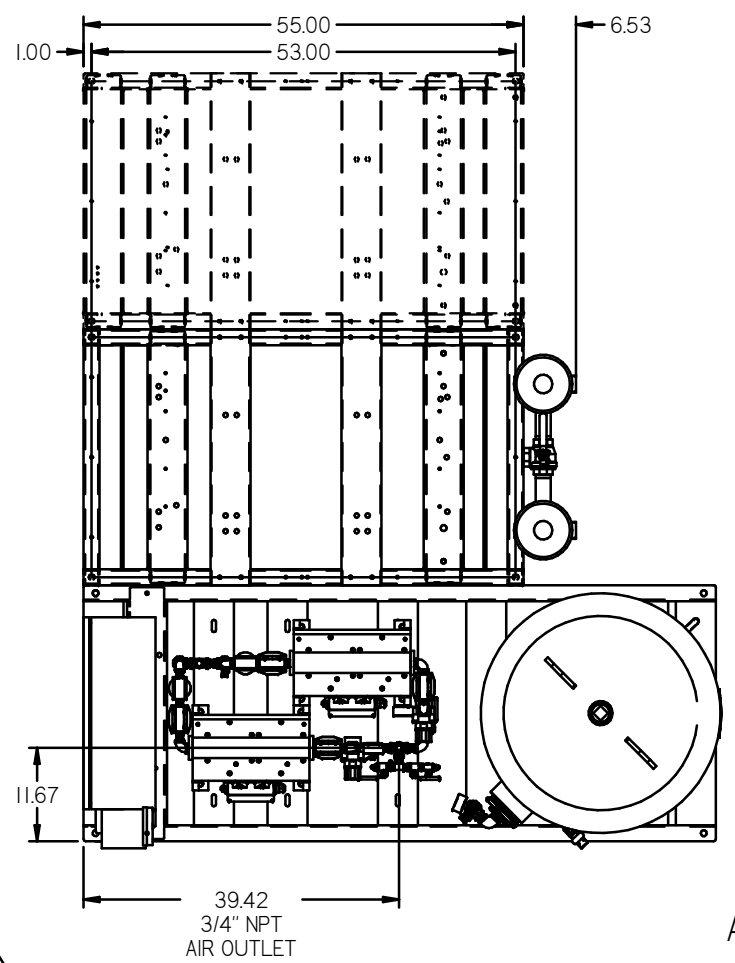


8 7 6 5 4 3 2 1

REV	ZONE	REVISION	DATE	ENR	NAME	CHKD
1	FULL	RELEASE TO PRODUCTION	8/19/19	GES	CT	MAH

NOTE: A MINIMUM OF 24" CLEARANCE IS RECOMMENDED AROUND THE ENTIRE UNIT.

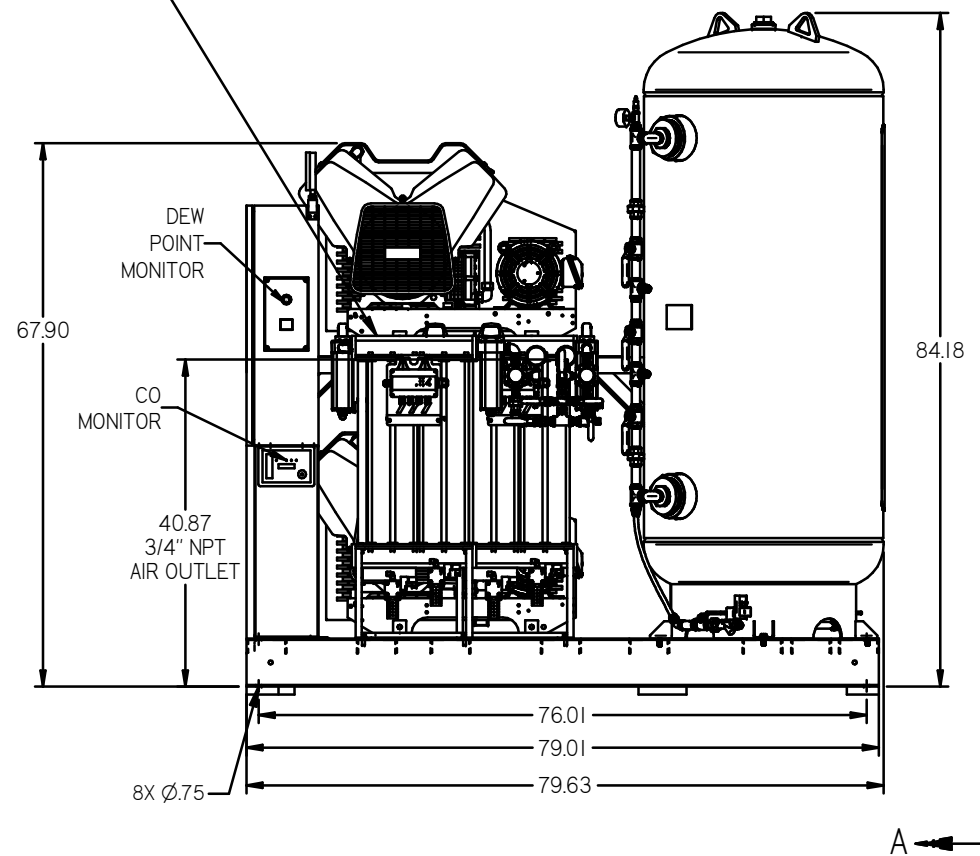
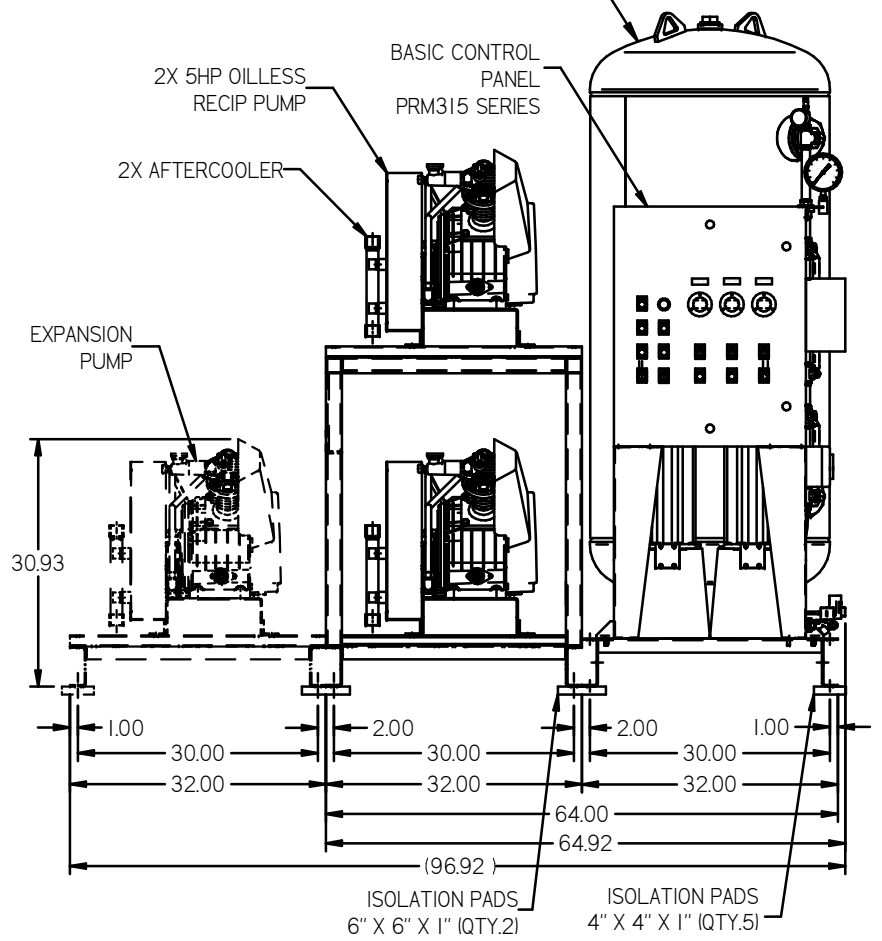


VIEW A-A

NOTE: SYSTEM DESIGNED IN COMPLIANCE WITH U.S. NFPA '99, LATEST EDITION.

200GAL ASME RECEIVER INTERNALLY LINED
SEE 3D MODEL ID# 721887 FOR PLUMBING DETAIL

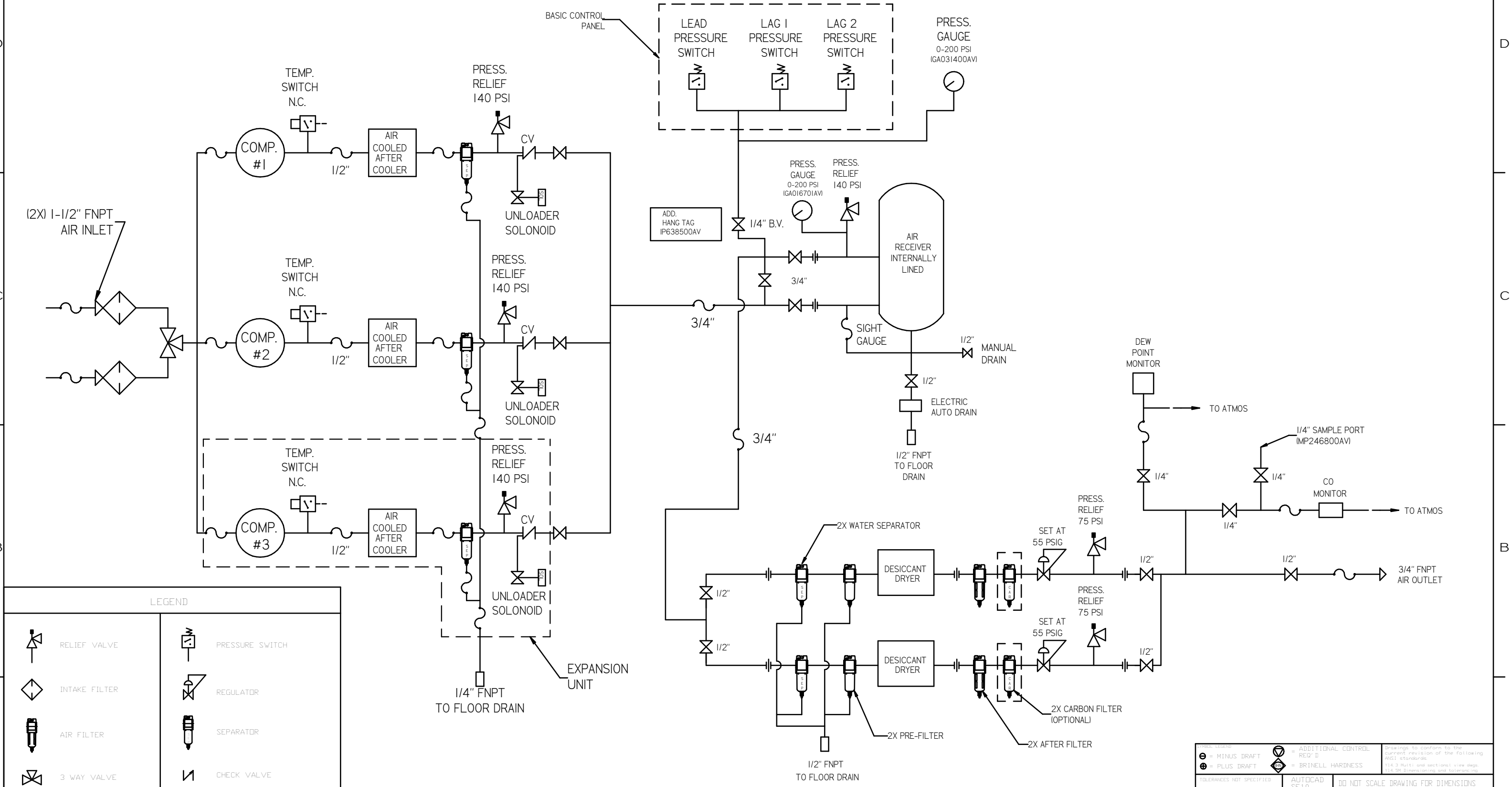
2X DESICCANT DRYERS W/ PRE-FILTERS & AFTER-FILTERS. CARBON FILTERS ARE OPTIONAL
SEE 3D MODEL ID# 722271 FOR PLUMBING DETAIL



<p>TOLERANCES NOT SPECIFIED</p> <p>XX ±</p> <p>XXX ±</p> <p>2 DEC ±</p>		<p>AUTOCAD SE 10</p> <p>INCH</p>	<p>DO NOT SCALE DRAWING FOR DIMENSIONS</p> <p>Sheet 1 of 2</p> <p>SCALE 1:12</p>
<p><small>CONFIDENTIAL DISCLOSURE: This drawing is the property of POWEREX INC. or the SCOTT FITZER COMPANY and subject to return on demand. Its contents are confidential and must not be copied or submitted to outside parties for use or examination.</small></p>		<p>DRWN BY: GES</p> <p>CHEK BY: MAH</p> <p>APPROVED BY: GES</p> <p>DATE: 8/19/19</p>	<p>DATE: 8/19/19</p>
<p>MATERIAL</p> <p>PART NAME: DUPLEX-EX3 DILLESS RECIP. 5HP. 200GAL. BASEMOUNT DUPLEX DESICCANT</p>		<p>POWEREX</p> <p>135 PRODUCTION DRIVE, HARRISON, OHIO 45030</p> <p>TEL: 502-762-7070 FAX: 513-341-3125</p>	
<p>DRGNO: MPD0508-EX3</p>		<p>SIZE: D</p>	

8 7 6 5 4 3 2 1

REV	ZONE	REVISION	DATE	ECN	NAME	CHKD
A	ALL	RELEASE TO PRODUCTION	8/19/19		GES	MAH



LEGEND	
	RELIEF VALVE
	INTAKE FILTER
	AIR FILTER
	3 WAY VALVE
	CARBON FILTER
	BALL VALVE
	SOLENOID VALVE
	PRESSURE SWITCH
	REGULATOR
	SEPARATOR
	CHECK VALVE
	FLEX LINE
	HIGH TEMP SWITCH
	UNION

NOTES:
 1) IF RESERVE COMPRESSOR IS ENERGIZED ALARM WILL OCCUR.
 2) PIPING TO THE INLET BY OTHERS AND TO BE PER NFPA99
 3) INSTRUMENTS DOWN STREAM OF SOURCE VALVE TO BE SUPPLIED BY OTHERS.

MINUS DRAFT PLUS DRAFT TOLERANCES NOT SPECIFIED XX ± XXX ± .25X ±	ADDITIONAL CONTROL REQ'D BRINELL HARDNESS AUTOCAD SE10 INCH CONFIDENTIAL DISCLOSURE This drawing is the property of POWEREX INC. of the SCOTT FETZER COMPANY and subject to return on demand. Its contents are confidential and must not be copied or submitted to outside parties for use on any project.	Drawings to conform to the current revision of the following ANSI standards: Y14.3 Multi and sectional view dsgs Y14.9 Dimensioning and tolerancing
DO NOT SCALE DRAWING FOR DIMENSIONS Sheet 2 of 2 SCALE 1:12	DRAWN BY: GES CHECKED BY: MAH APPROVED BY: GES, CT 8/19/19, 8/19/19, 8/19/19, 8/19/19	MATERIAL: N/A PART NAME: SHP. MED. PACKAGE FLOW SCHEMATIC DWG NO: MPD0508-EX3 SIZE: D

