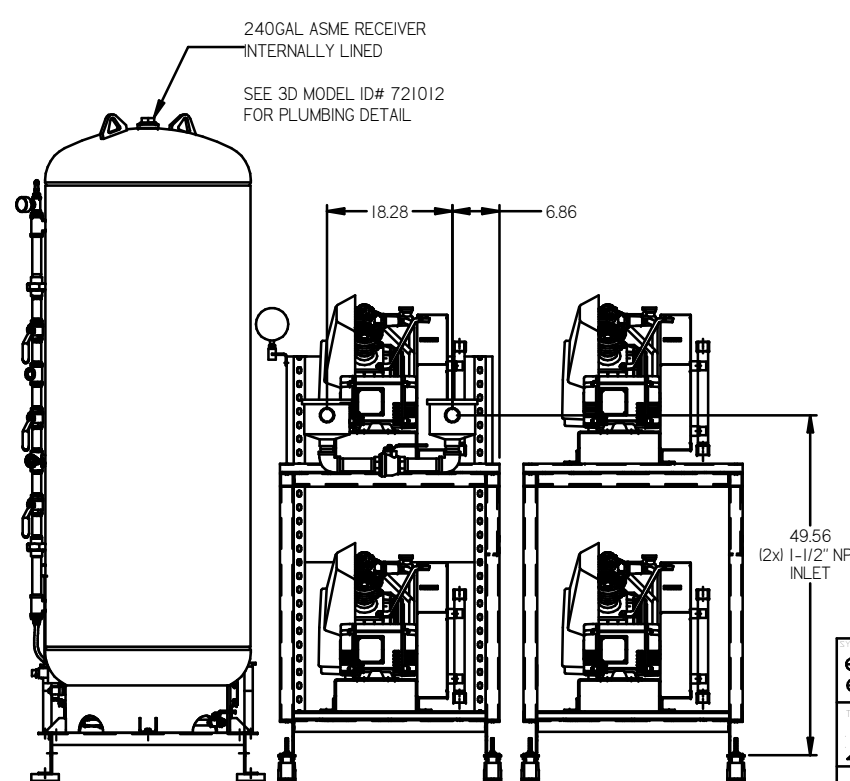
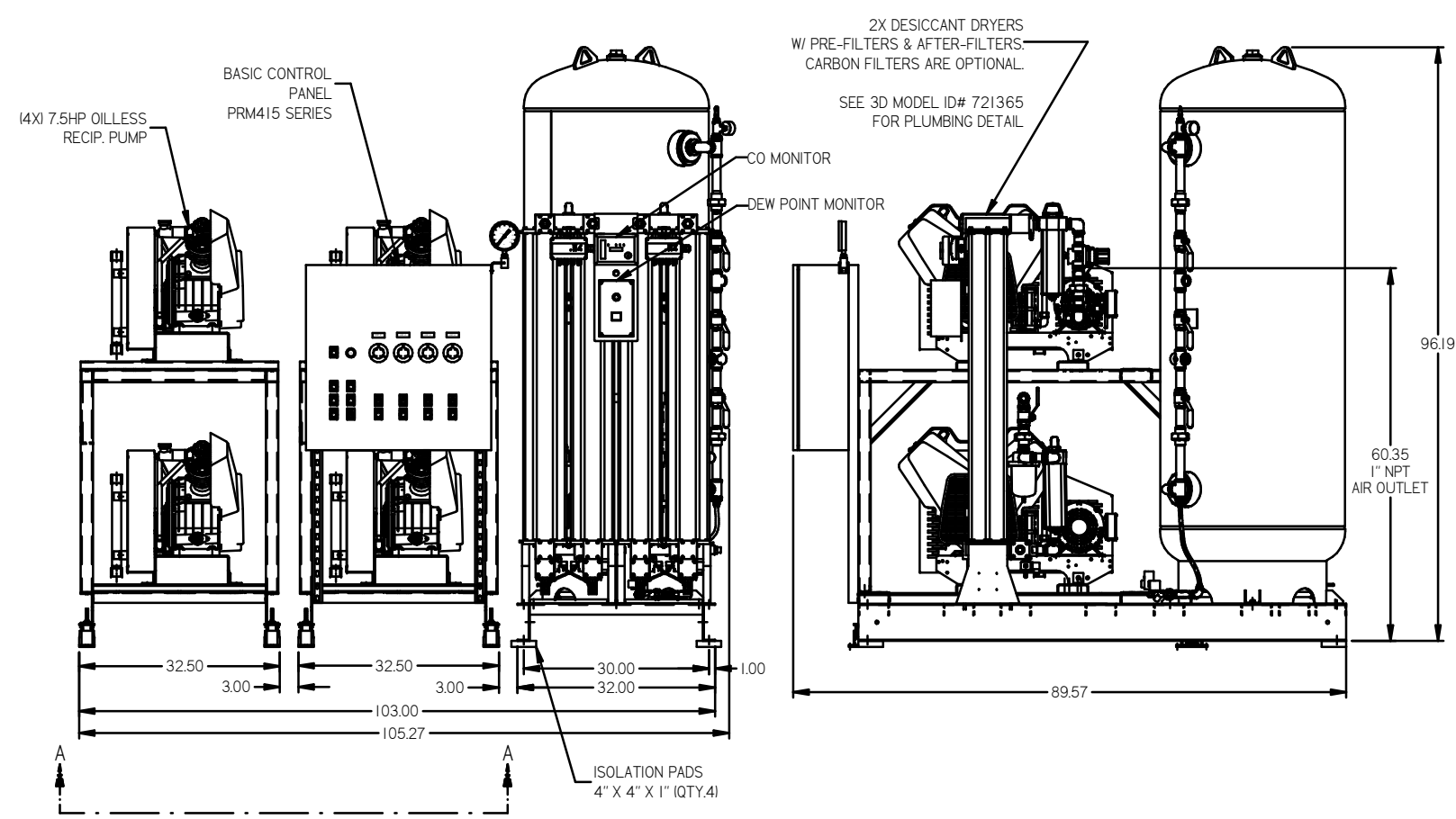
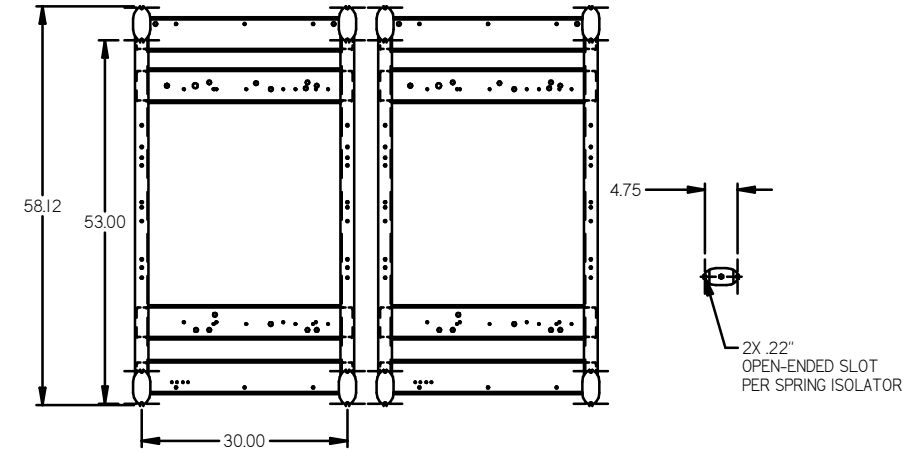
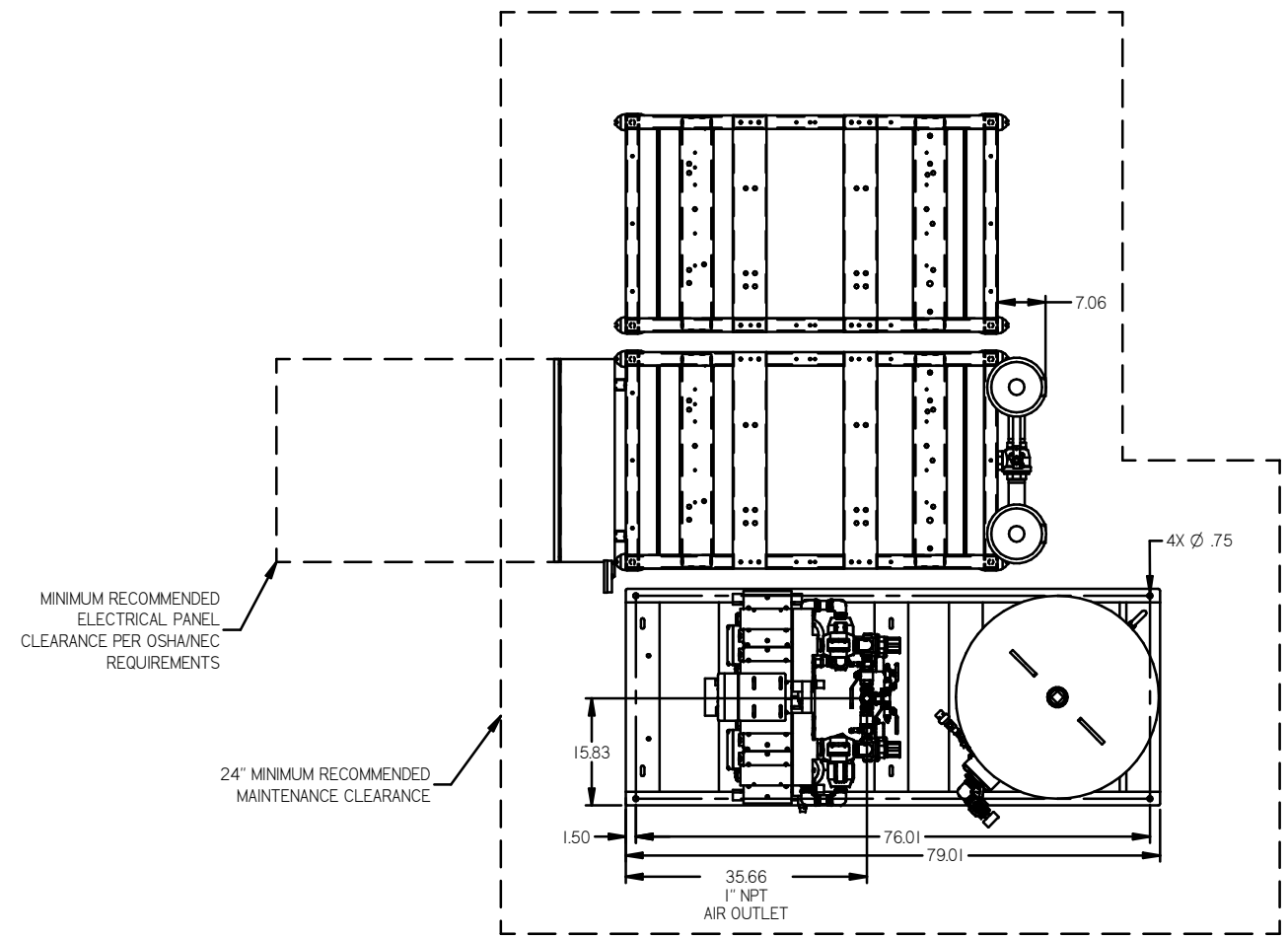


REV	ZONE	REVISION	DATE	ECN	RW	CHKD
B-1	ALL	RELEASE TO PRODUCT EDN	11/30/10	20407	AEK	GES
C-4	ALL	ADDED PRM 94575	9/18/11	22609	AEK	GES
D-4	2 ALL	ADDED/SUPPORTED FLEX LINES	12/12/13	PRE00030	AEK	GES
E-4	1 ALL	UPDATED DRYER OUTLET ORIENTATION AND REMOVED AFTER COOLER BRACKETS	04/01/15	PRE00100	MJD	GES
F-4	1 ALL	CHANGED TO NEW BS DESIGN	7/14/16	PRE00132	AEK	GES
G	ALL	CHANGED TO TREAT DRYER/MOTOR/TANK, UPDATED TO TEAM CENTER	6/26/19	PRE00328	GES	MW

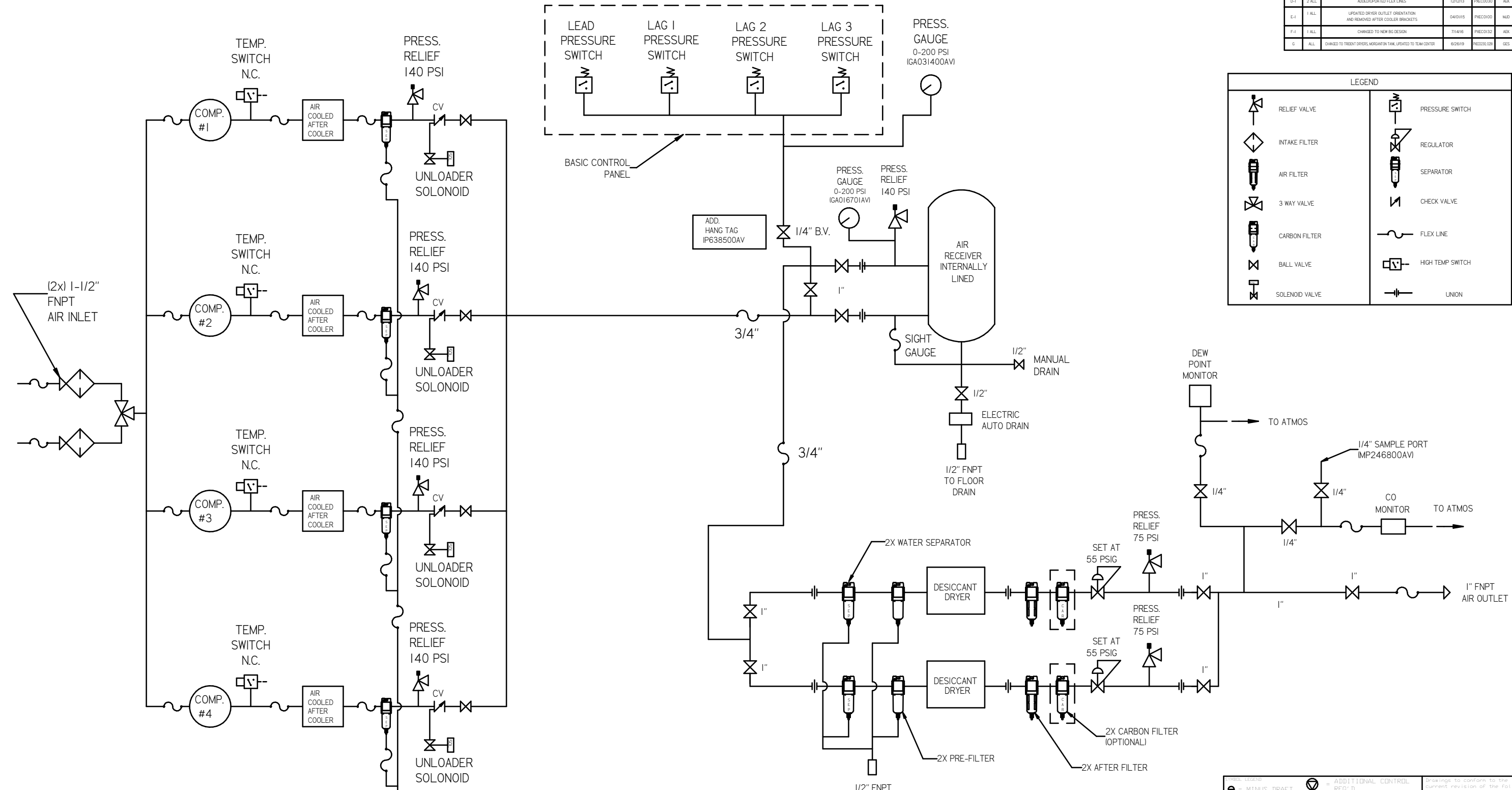


NOTE: SYSTEM DESIGNED IN COMPLIANCE WITH U.S. NFPA '99, LATEST EDITION.

TOLERANCES NOT SPECIFIED XX ± XXX ± 2 DEC ±	AUTOCAD REL2008 LT INCH Sheet 1 of 2 SCALE 1:12	DO NOT SCALE DRAWING FOR DIMENSIONS Drawings to conform to the current revision of the following ANSI standards: V14.3 Multi and sectional view V14.9 Dimensioning and tolerancing
CONFIDENTIAL DISCLOSURE This drawing is the property of POWEREX, INC. of the SCOTT FETZER COMPANY and subject to return on demand. Its contents are confidential and must not be copied or submitted to outside parties for use or examination.	DRAWN BY: AEK CHECKED BY: GES APPROVED BY: DMS DATE: 11/30/10 11/30/10 11/30/10 11/30/10	MATERIAL: N/A PART NAME: QUADPLEX OILLESS RECIP 7.5HP 240GAL BASEMOUNT DUPLEX DESICCANT DWG NO: MPQ0608X5 SIZE: D

REV	ZONE	REVISION	DATE	ECN	NAME	CHKD
B-1	ALL	RELEASE TO PRODUCTION	11/28/10	22497	AEK	GES
C-1	ALL	ADDED P&ID SHEETS	9/8/10	22609	AEK	GES
D-1	2 ALL	ADDED/UPDATED FLEX LINES	12/21/13	P&ID0030	AEK	GES
E-1	1 ALL	UPDATED DRYER OUTLET ORIENTATION AND REMOVED AFTER COOLER BRACKETS	04/01/15	P&ID0100	MJD	GES
F-1	1 ALL	CHANGED TO NEW 90 DESIGN	7/14/16	P&ID0132	AEK	GES
G	ALL	CHANGED TO TREAT DRYERS MORGAN TANK, UPDATED TO TEAM CENTER	6/26/19	P&ID0202	GES	MJH

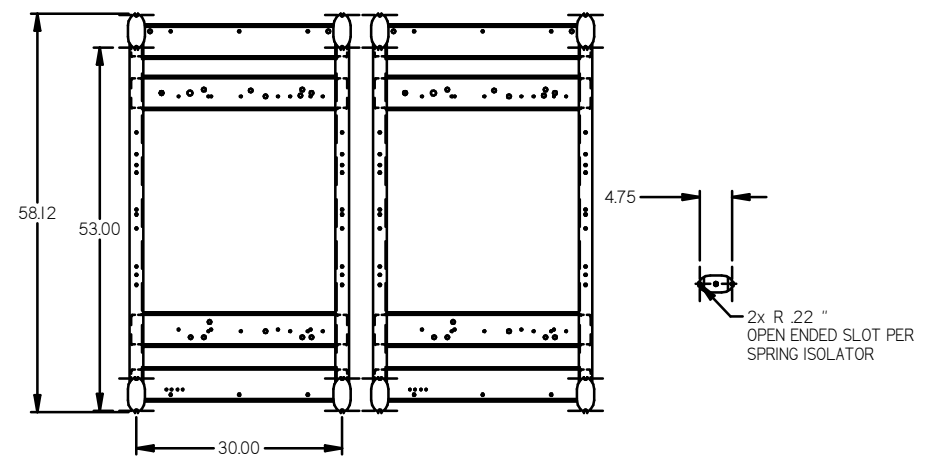
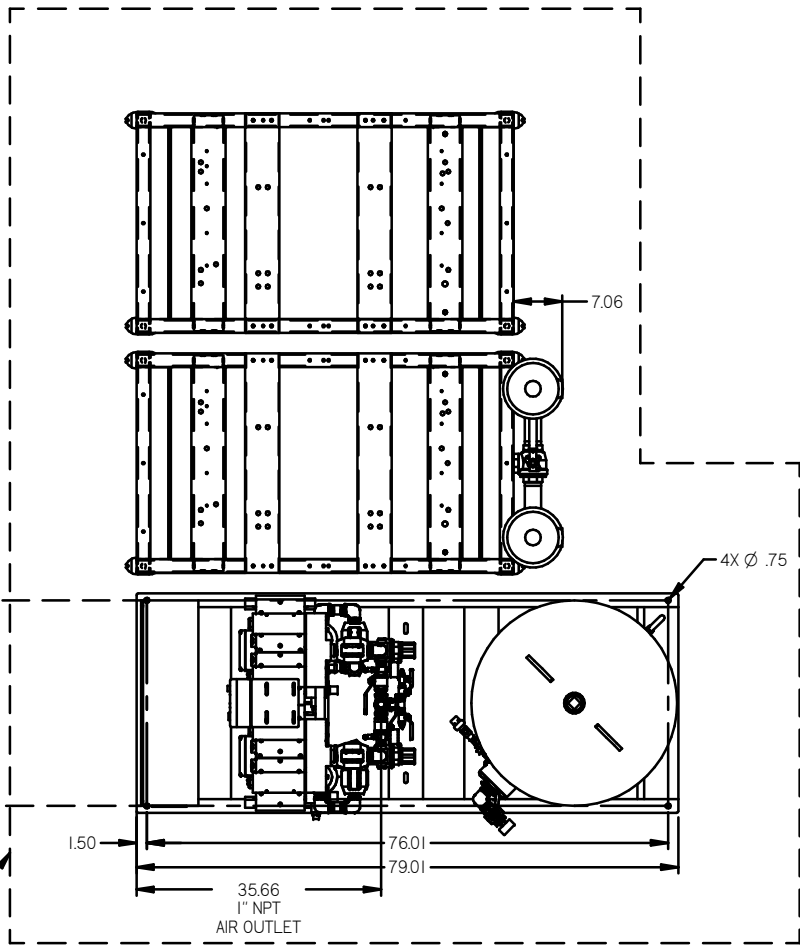
LEGEND	
	RELIEF VALVE
	INTAKE FILTER
	AIR FILTER
	3 WAY VALVE
	CARBON FILTER
	BALL VALVE
	SOLENOID VALVE
	PRESSURE SWITCH
	REGULATOR
	SEPARATOR
	CHECK VALVE
	FLEX LINE
	HIGH TEMP SWITCH
	UNION



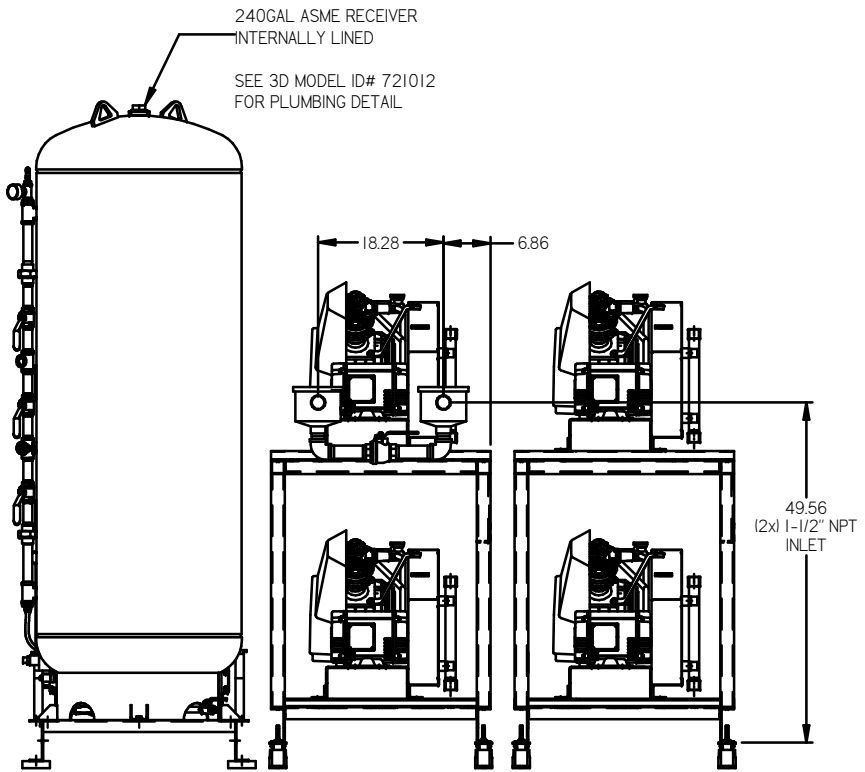
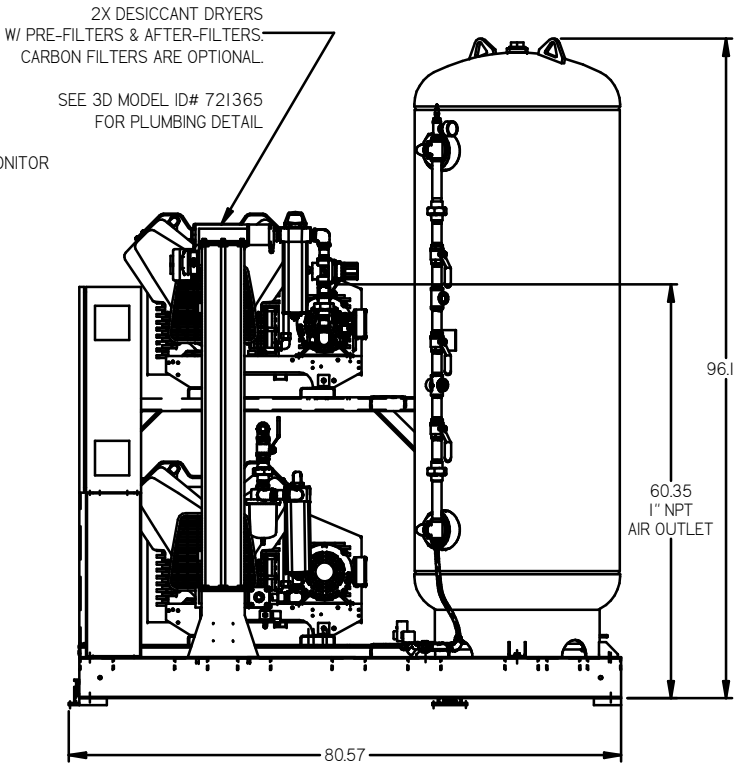
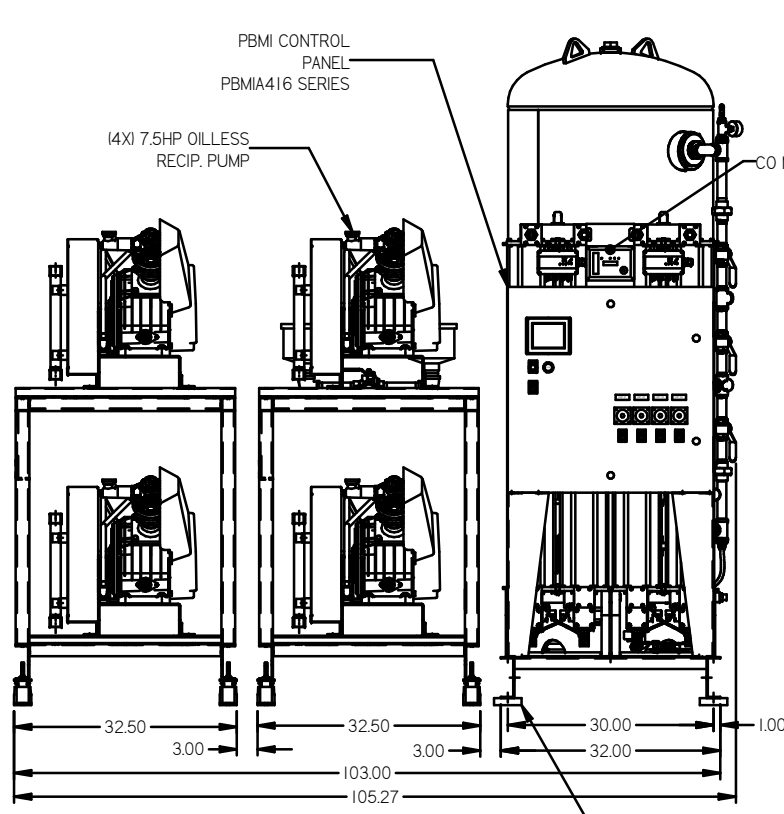
NOTES:
 1) IF LAG 3 COMPRESSOR IS ENERGIZED ALARM WILL OCCUR.
 2) PIPING TO THE INLET BY OTHERS AND TO BE PER NFPA99
 3) INSTRUMENTS DOWN STREAM OF SOURCE VALVE TO BE SUPPLIED BY OTHERS.

DIMS: LEGEND ⊖ = MINUS DRAFT ⊕ = PLUS DRAFT ○ = ADDITIONAL CONTROL ⊗ = BRINELL HARDNESS	Drawings to conform to the current revision of the following ANSI standards: 174.3 Multi and optional view dgs. 174.2 Dimensioning and tolerancing
TOLERANCES NOT SPECIFIED XX # XXX # .X DEG #	AUTOCAD REL2008 LT INCH DO NOT SCALE DRAWING FOR DIMENSIONS Sheet 2 of 2 SCALE 1:12
CONFIDENTIAL DISCLOSURE This drawing is the property of POWERREX, INC. of the SCOTT FETZER COMPANY and subject to return on demand. Its contents are confidential and must not be copied or submitted to outside parties for use or reproduction.	DRAWN BY: AEK CHECKED BY: GES APPROVED BY: DMS, RJR 11/30/10 11/30/10 11/30/10 11/30/10
MATERIAL: N/A PART NAME: QUAD RECIP MED PACKAGE FLOW SCHEMATIC	 100 HERRICK ROAD, SCOTT FETZER COMPANY P.O. BOX 759, SCOTT FETZER COMPANY P.O. 889-759-7979 FAX: (513) 367-3125 DWG NO: MPQ0608X5 SIZE: D

REV	ZONE	REVISION	DATE	ECN	NAME	CHKD
E-1	ALL	ADDED PUMP SHEETS	10/19/11	25001	AEK	GES
D-1	2 ALL	ADDED/UPDATED FLEX LINES	12/02/13	PREC0030	AEK	GES
E-1	1 ALL	UPDATED DRYER OUTLET ORIENTATION AND REMOVED AFTER COOLER BRACKETS	04/01/15	PREC0100	MD	GES
F-1	1 ALL	CHANGED TO NEW BG DESIGN	7/14/16	PREC0132	AEK	GES
G	ALL	CHANGED TO TRENCH DRYERS, W/ADDITIONAL TANK, UPDATED TO TEAM CENTER	02/26/19	PREC02019	GES	MMH



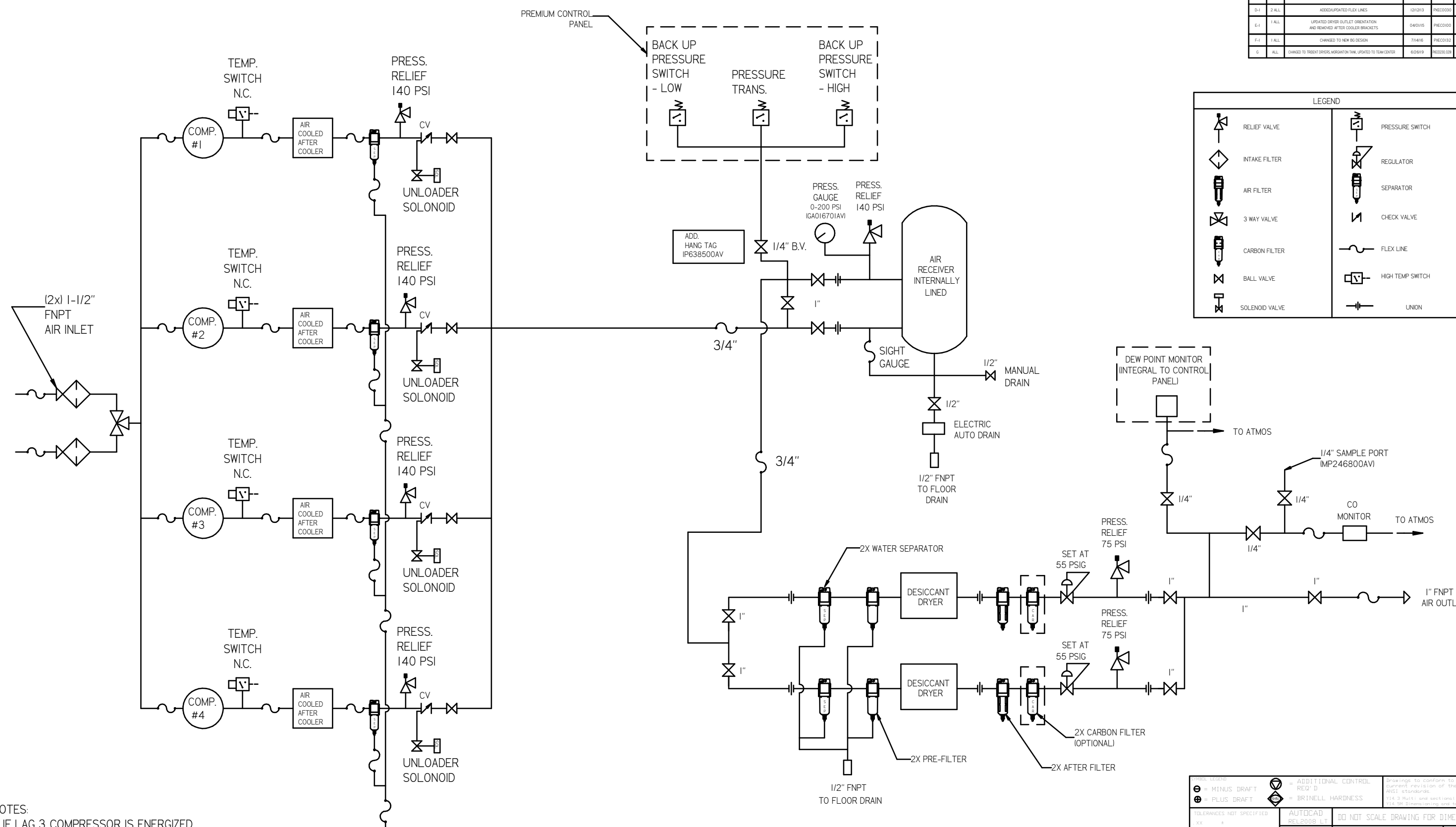
VIEW A-A



NOTE: SYSTEM DESIGNED IN COMPLIANCE WITH U.S. NFPA '99, LATEST EDITION.

<p>UNPLIFIED</p> <p>MINUS DRAFT</p> <p>PLUS DRAFT</p>	<p>ADDITIONAL CONTROL REQ'D</p> <p>BRINELL HARDNESS</p>	<p>Drawings to conform to the current revision of the following ANSI standards:</p> <p>114.3 Multi and sectional view dgs.</p> <p>114.3B Dimensioning and tolerancing</p>
<p>TOLERANCES NOT SPECIFIED</p> <p>XXX ±</p> <p>Z (NEG.) ±</p>	<p>AUTOCAD RELEASED LT</p> <p>INCH</p>	<p>DO NOT SCALE DRAWING FOR DIMENSIONS</p> <p>Sheet 1 of 2</p> <p>SCALE 1:12</p>
<p>CONFIDENTIAL DISCLOSURE</p> <p>This drawing is the property of POWEREX, INC. of the SCOTT FETZER COMPANY and subject to return on demand. Its contents are confidential and must not be copied or used in any way for outside parties for use or reproduction.</p>	<p>DESIGNED BY: AEK</p> <p>CHECKED BY: GES</p> <p>DATE: 9/19/11</p>	<p>APPROVED BY: ENGINEERING</p> <p>DATE: 9/19/11</p>
<p>MATERIAL: N/A</p> <p>PART NAME: QUADPLEX DILLESS RECIP 7.5HP 240GAL BASEMOUNT DUPLEX DESICCANT</p>	<p>POWEREX</p> <p>150 PRODUCTION DRIVE, WARRICK, INDIAN 46390</p> <p>PH: 888-769-7779 FAX: 413-321-3425</p>	<p>SIZE: D</p> <p>MPQ0608X5</p>

REV	ZONE	REVISION	DATE	ECN	NAME	CHKD
C-1	ALL	PRECISION SHEETS	01/20/11	00005	AEK	GES
D-1	2 ALL	ADDED/UPDATED FLEX LINES	12/21/13	PREC0030	AEK	GES
E-1	1 ALL	UPDATED DRYER OUTLET ORIENTATION AND REMOVED AFTER COOLER BRACKETS	04/01/15	PREC0100	MD	GES
F-1	1 ALL	CHANGED TO NEW BG DESIGN	7/14/16	PREC0132	AEK	GES
G	ALL	CHANGED TO TRENK DRYER, MORGANTON TANK, UPDATED TO TEAM CENTER	02/09/19	PREC0209	GES	MMH



LEGEND	
	RELIEF VALVE
	INTAKE FILTER
	AIR FILTER
	3 WAY VALVE
	CARBON FILTER
	BALL VALVE
	SOLENOID VALVE
	PRESSURE SWITCH
	REGULATOR
	SEPARATOR
	CHECK VALVE
	FLEX LINE
	HIGH TEMP SWITCH
	UNION

- NOTES:
- 1) IF LAG 3 COMPRESSOR IS ENERGIZED ALARM WILL OCCUR.
 - 2) PIPING TO THE INLET BY OTHERS AND TO BE PER NFPA99
 - 3) INSTRUMENTS DOWN STREAM OF SOURCE VALVE TO BE SUPPLIED BY OTHERS.

TOLERANCES NOT SPECIFIED XX ± XXX ± .4 DEC. ±	AUTOCAD REL2008 LT INCH	DO NOT SCALE DRAWING FOR DIMENSIONS Sheet 2 of 2 SCALE 1:12
CONFIDENTIAL DISCLOSURE This drawing is the property of POWEREX, INC. or the SCOTT FELTZER COMPANY and subject to return on demand. Its contents are confidential and must not be copied or submitted to outside parties for use or reproduction.		DRAWN BY: AEK CHECKED BY: GES APPROVED BY: DMS, RJR 9/19/11 9/19/11 9/19/11 9/19/11
MATERIAL: N/A		
PART NAME: QUAD RECIP MED PACKAGE FLOW SCHEMATIC		DWG NO: MPQ0608X5 SIZE: D