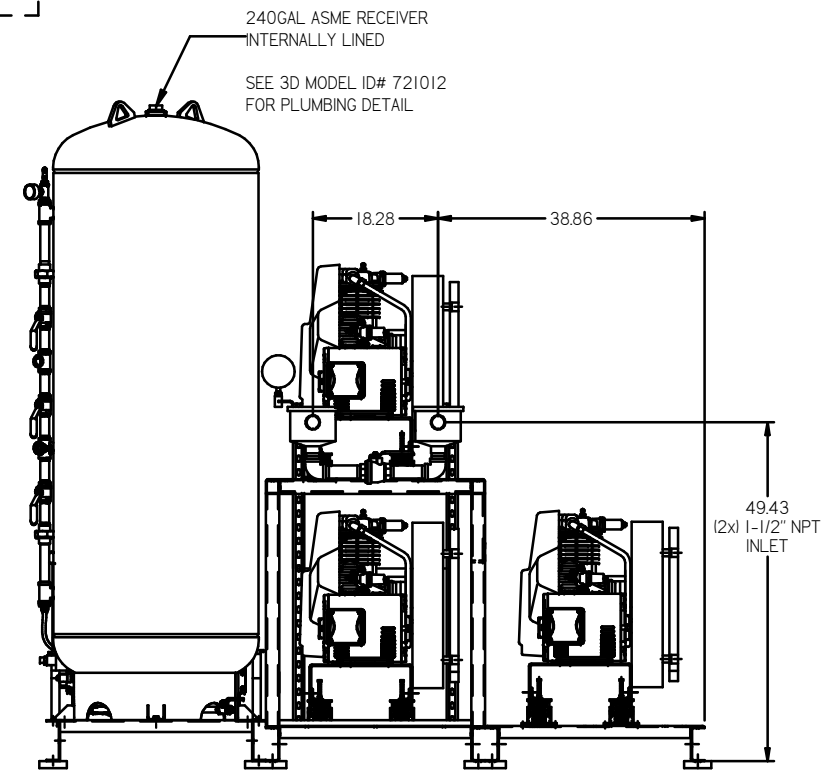
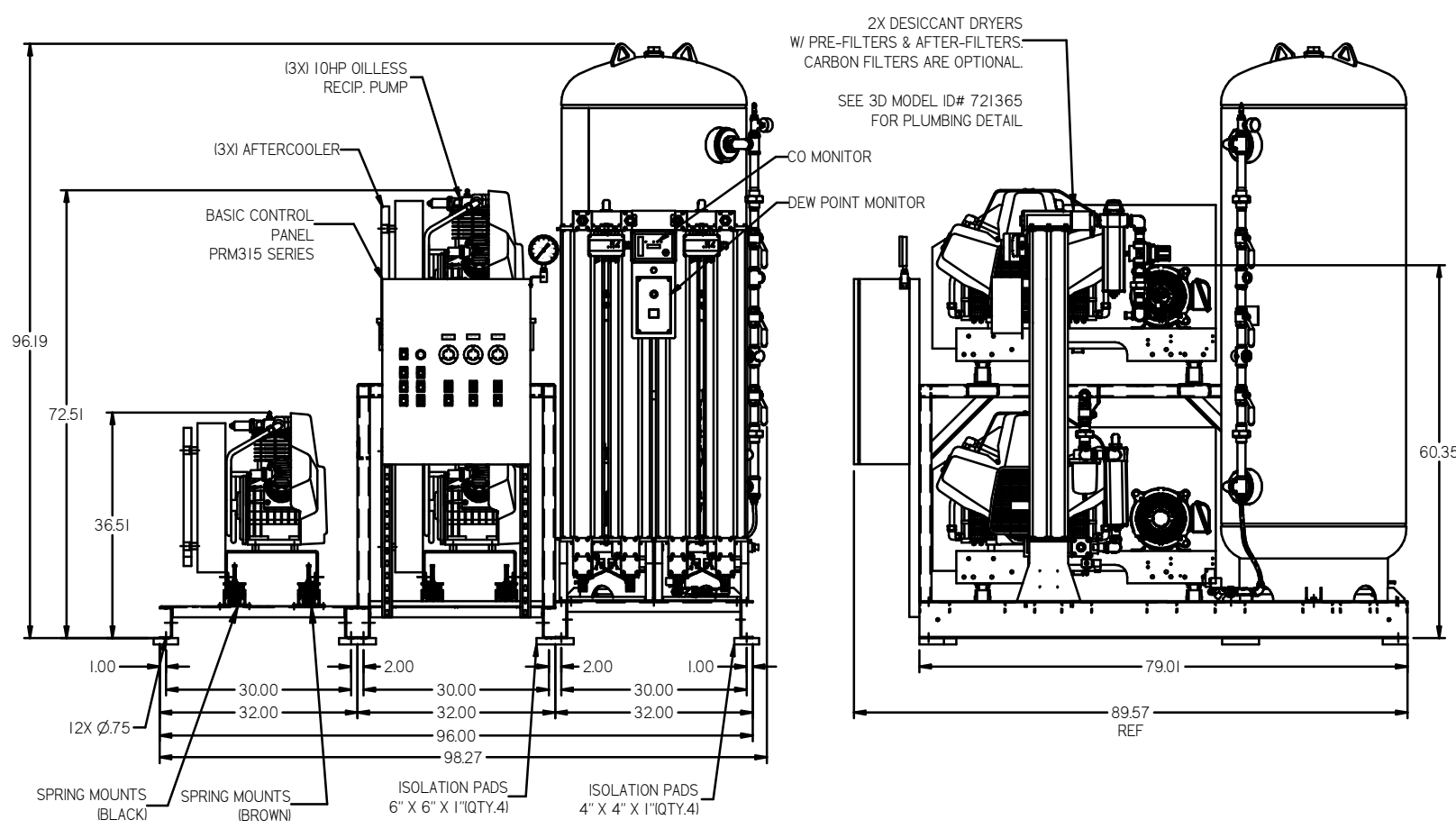
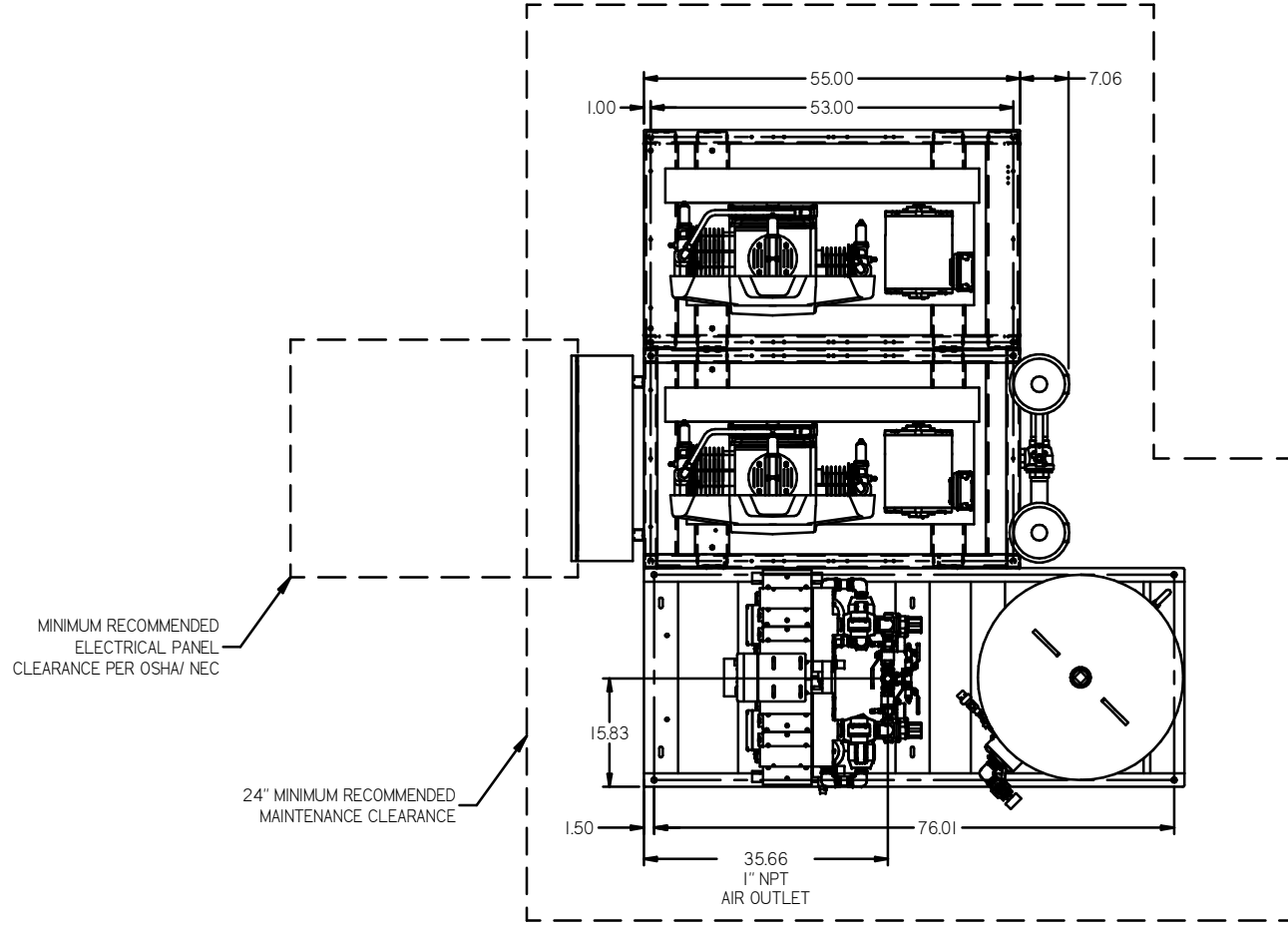


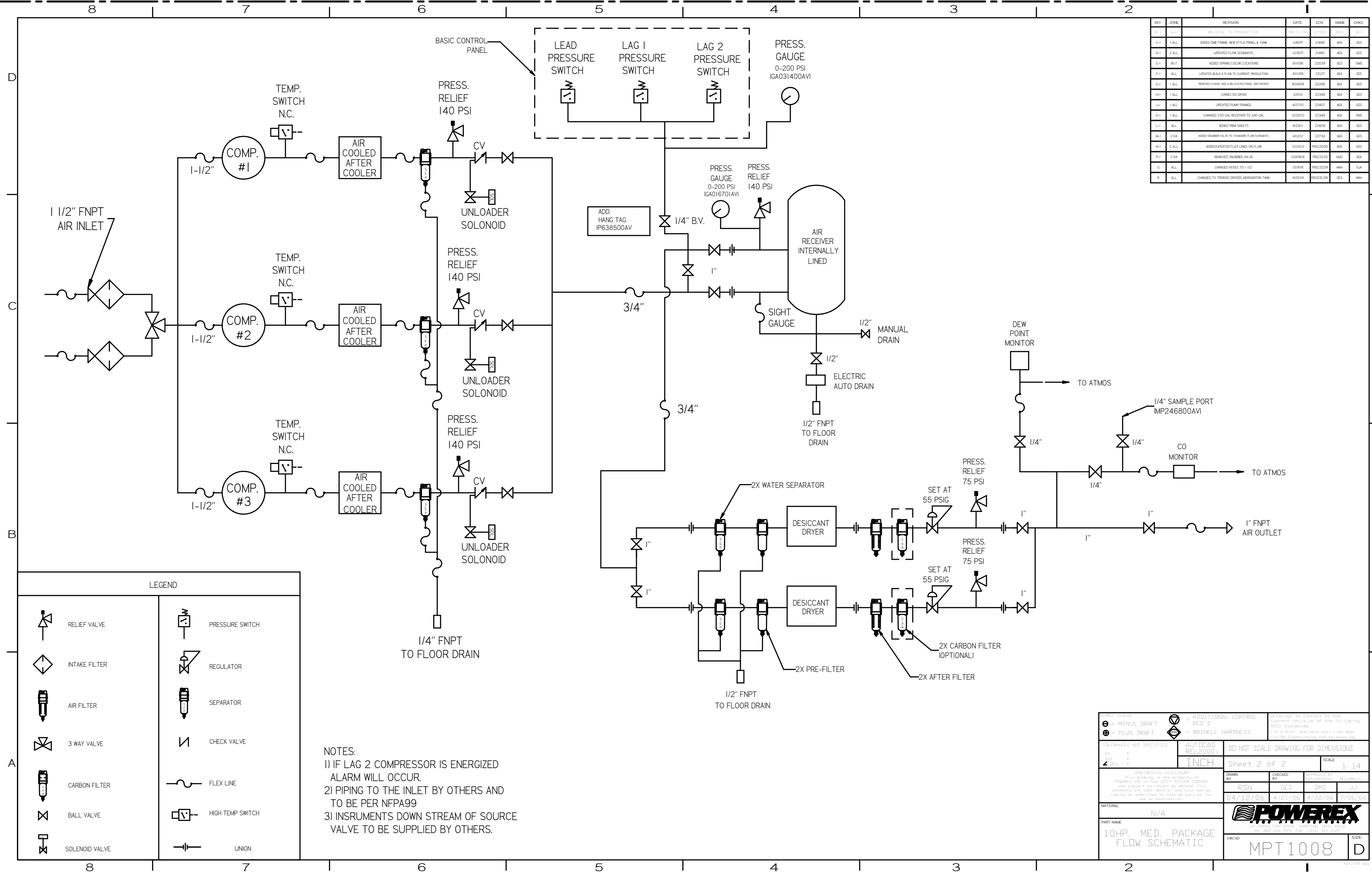
REV	ZONE	REVISION	DATE	ECN	NAME	CHKD
B-1	ALL	RELEASE TO PRODUCTION	08/11/04	21555	RSN	GES
C-1	ALL	ADDED ONE FRAME NEW STYLE PANEL & TANK	11/07	21699	AKX	GES
D-1	2 ALL	UPDATED FLOW SCHEMATIC	12/3/07	21890	AKX	GES
E-1	1B-7	ADDED SPRING COLOR LOCATIONS	8/16/08	22039	GES	DMS
F-1	ALL	UPDATED BUILD & FLOW TO CURRENT PRODUCTION	6/11/09	22127	AKX	GES
G-1	1 ALL	REMOVED H BASE 900 & RELOCATED PANEL AND DRIVERS	9/24/09	22286	AKX	GES
H-1	1 ALL	CONNECTED DRIVER	2/3/10	22348	AKX	GES
J-1	1 ALL	UPDATED PUMP FRAMES	4/27/10	22407	AKX	GES
K-1	1 ALL	CHANGED 200 GAL RECEIVER TO 240 GAL	12/22/10	22348	AKX	DMS
L-1	ALL	ADDED P&M SHEETS	9/23/11	22609	AKX	GES
M-1	2 D4	ADDED SHLEIBER VALVE TO STANDARD FLOW SCHEMATIC	4/22/12	22734	AKX	GES
N-1	2 ALL	ADDED/UPDATED FLEX LINES ON FLOW	12/12/13	PXC0030	AKX	GES
P-1	2 D4	REMOVED SHLEIBER VALVE	12/29/16	PXC0133	MLO	AKX
Q	ALL	CHANGED HOSES TO 1/2"	10/31/18	PXC0229	MH	SA
R	ALL	CHANGED TO TRIDENT DRIVERS, MORGANTON TANK	6/25/19	PXC0308	GES	MH



NOTE: SYSTEM DESIGNED IN COMPLIANCE WITH U.S. NFPA '99, LATEST EDITION

TOLERANCES NOT SPECIFIED XX ± .01 XXX ± .005 Z (SEE 1)	AUTOCAD REL2000.1 INCH	DO NOT SCALE DRAWING FOR DIMENSIONS Sheet 1 of 2 SCALE 1:14
CONFIDENTIAL DISCLOSURE This drawing is the property of POWEREX, INC. or its SUCCESSOR COMPANY and is subject to return on demand. Its contents are confidential and must not be copied or submitted to outside parties for use or examination.	DRAWN BY: RSN CHECKED BY: GES APPROVED BY: DMS, JJ 04/12/06 4/21/06 4/22/06 7/06/06	MATERIAL: N/A PART NAME: TRIPLEX DILLESS RECIP. 10HP. 240GAL. BASEMOUNT DUPLEX DESICCANT DWG NO: MPT1008 SIZE: D

REV	ZONE	REVISION	DATE	ECN	NAME	CHKD
B	ALL	RELEASE TO PRODUCTION	01/11/06	21555	GES	GES
C-1	1 ALL	ADDED ONE FRAME, NEW STYLE PANEL & TANK	10/07/07	21669	AEK	GES
D-1	2 ALL	UPDATED FLOW SCHEMATIC	12/07/07	21890	AEK	GES
E-1	BB-7	ADDED SPRING COLOR LOCATIONS	01/10/08	22039	GES	DMS
F-1	ALL	UPDATED BLD & FLOW TO CURRENT PRODUCTION	01/10/09	22127	AEK	GES
G-1	1 ALL	REMOVED 0.5" W/2" & RELOCATED PANEL AND DRIVERS	09/24/09	22286	AEK	GES
H-1	1 ALL	CORRECTED DRIVER	2/3/10	22348	AEK	GES
J-1	1 ALL	UPDATED PUMP FRAMES	02/27/10	22407	AEK	GES
K-1	1 ALL	CHANGED 200 GAL. RECEIVER TO 240 GAL.	12/20/10	22348	AEK	DMS
L-1	ALL	ADDED FRM SHEETS	09/23/11	22609	AEK	GES
M-1	2 DA	ADDED SHOWER VALVE TO STANDARD FLOW SCHEMATIC	04/21/12	22734	AEK	GES
N-1	2 ALL	ADDED/UPDATED FLEX LINES ON FLOW	12/12/13	PXC02030	AEK	GES
P-1	2 DA	REMOVED SHOWER VALVE	02/08/16	PXC02133	NLD	AEK
Q	ALL	CHANGED HOSES TO 1 1/2"	10/01/18	PXC02229	MH	SJA
R	ALL	CHANGED TO TRENCH DRIVERS, MORGANTON TANK	05/25/19	RE032129	GES	MH



LEGEND

	RELIEF VALVE		PRESSURE SWITCH
	INTAKE FILTER		REGULATOR
	AIR FILTER		SEPARATOR
	3 WAY VALVE		CHECK VALVE
	CARBON FILTER		FLEX LINE
	BALL VALVE		HIGH TEMP SWITCH
	SOLENOID VALVE		UNION

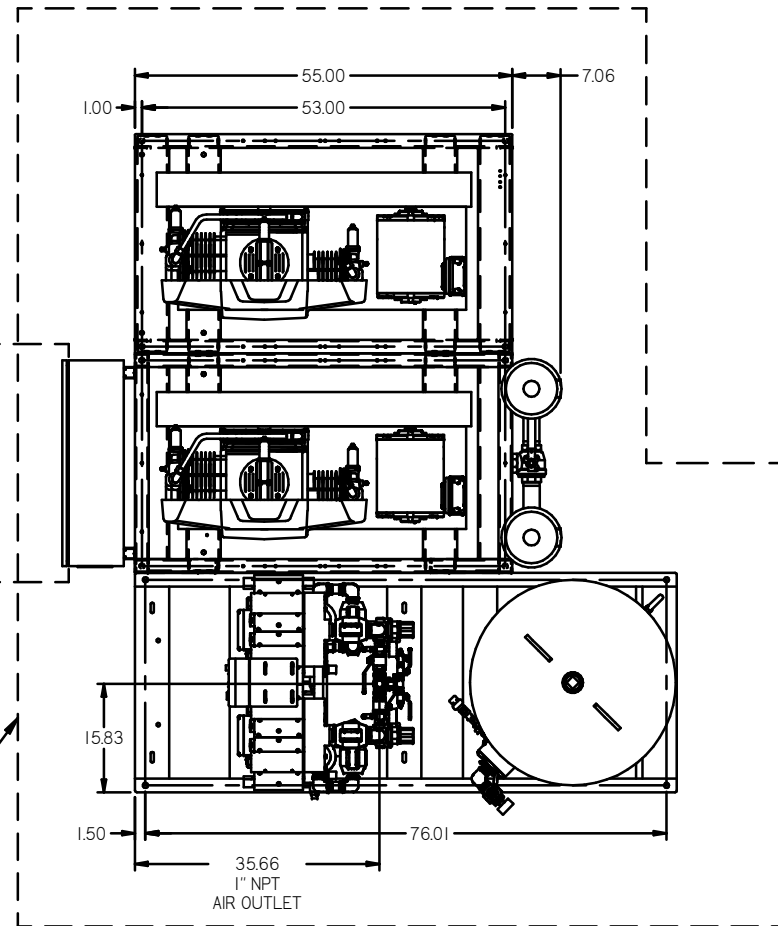
NOTES:
 1) IF LAG 2 COMPRESSOR IS ENERGIZED ALARM WILL OCCUR.
 2) PIPING TO THE INLET BY OTHERS AND TO BE PER NFPA99
 3) INSTRUMENTS DOWN STREAM OF SOURCE VALVE TO BE SUPPLIED BY OTHERS.

MINUS DRAFT PLUS DRAFT ADDITIONAL CONTROL REQ'D BRINELL HARDNESS	AUTOCAD REL2000+ INCH DO NOT SCALE DRAWING FOR DIMENSIONS Sheet 2 of 2 SCALE 1:14 This drawing is the property of POWEREX INC. of the SOUTHERN REGION and is subject to return on demand. Its contents are confidential and must not be copied or submitted to outside parties for use or reproduction.	DRAWN BY: RSN CHECKED BY: GES APPROVED BY: ENGINEERING MFG/RR/TC 04/12/06 4/21/06 4/22/06 7/06/06
MATERIAL: N/A PART NAME: 10HP. MED. PACKAGE FLOW SCHEMATIC DWG NO: MPT1008 SIZE: D		 150 PRODUCTION DRIVE, HARRISBURG, OHIO 45030 PH: 930-760-7979 FAX: 930-363-3105

REV	ZONE	REVISION	DATE	EDN	NAME	CHKD
DL-1	ALL	ADDED PBM1 SHEETS	9/23/11	326019	AEK	GES
M-1	2 DA	ADDED SHOWER VALVE TO STANDARD FLOW SCHEMATIC	4/20/12	22754	AEK	GES
N-1	2 ALL	ADDED/UPDATED FLEX LINES ON FLOW	12/20/13	PHEC0030	AEK	GES
P-1	2 DA	REMOVED SHOWER VALVE	02/05/16	PHEC0033	ALD	AEK
O	ALL	CHANGED HOSES TO 1/2"	10/3/16	PHEC0229	MH	SJA
R	ALL	CHANGED TO TRIDENT DRIVERS, MORGANTON TANK	6/25/19	RES026.09	GES	MH

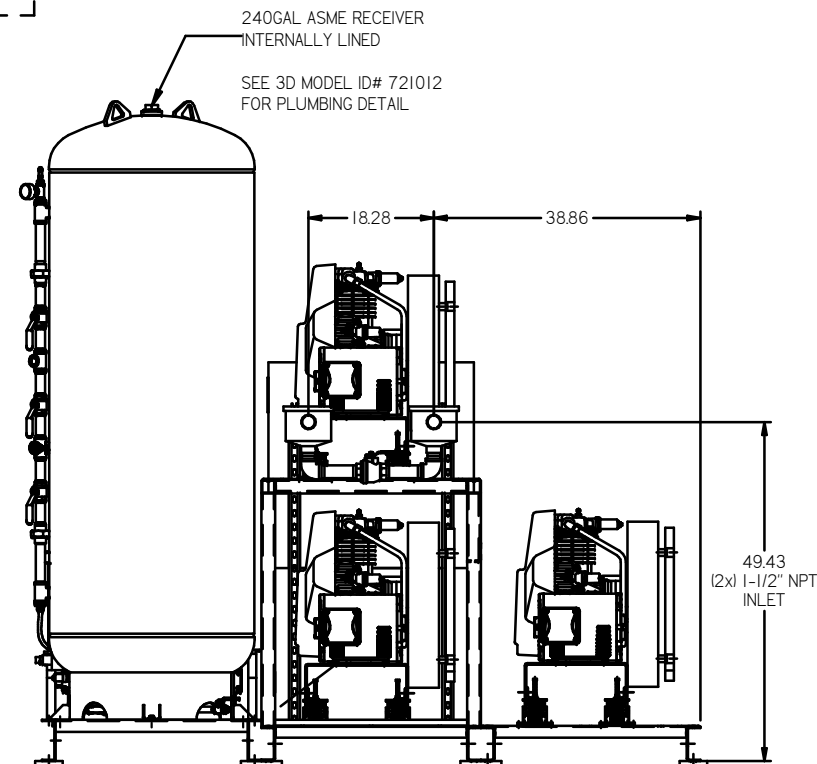
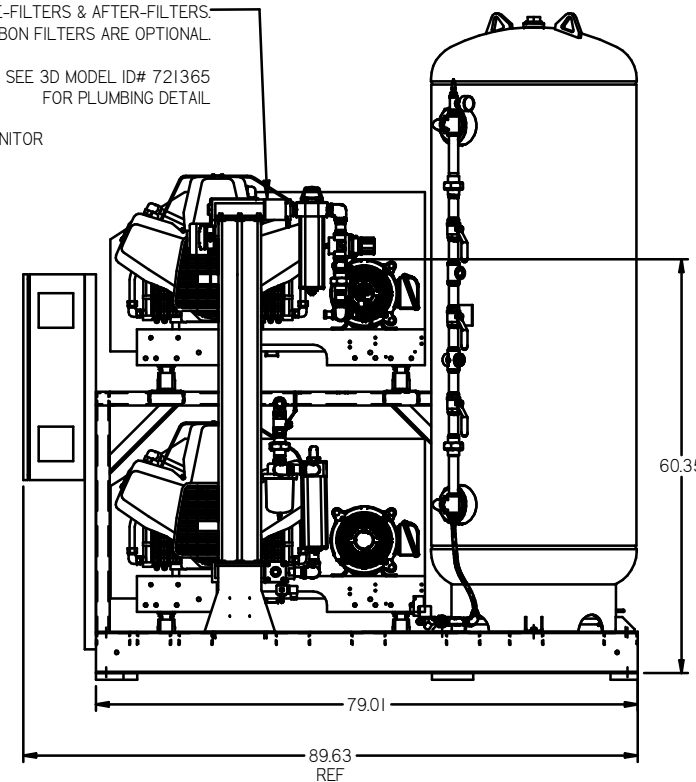
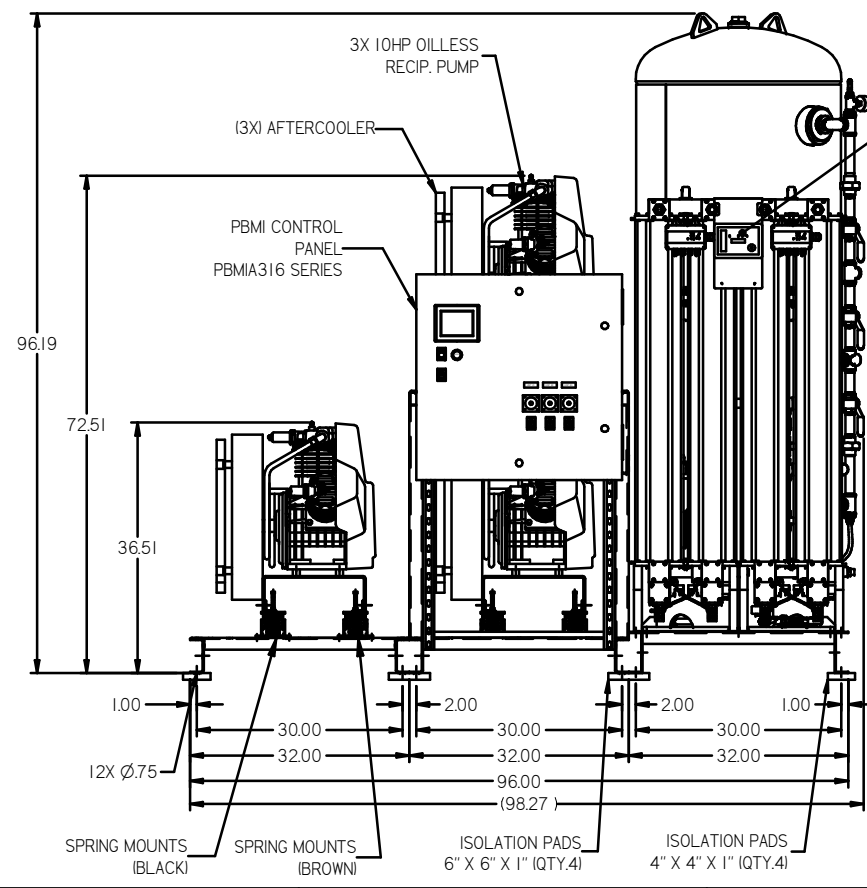
MINIMUM RECOMMENDED ELECTRICAL PANEL CLEARANCE PER OSHA/ NEC

24" MINIMUM RECOMMENDED MAINTENANCE CLEARANCE



2X DESICCANT DRYERS W/ PRE-FILTERS & AFTER-FILTERS. CARBON FILTERS ARE OPTIONAL. SEE 3D MODEL ID# 721365 FOR PLUMBING DETAIL.

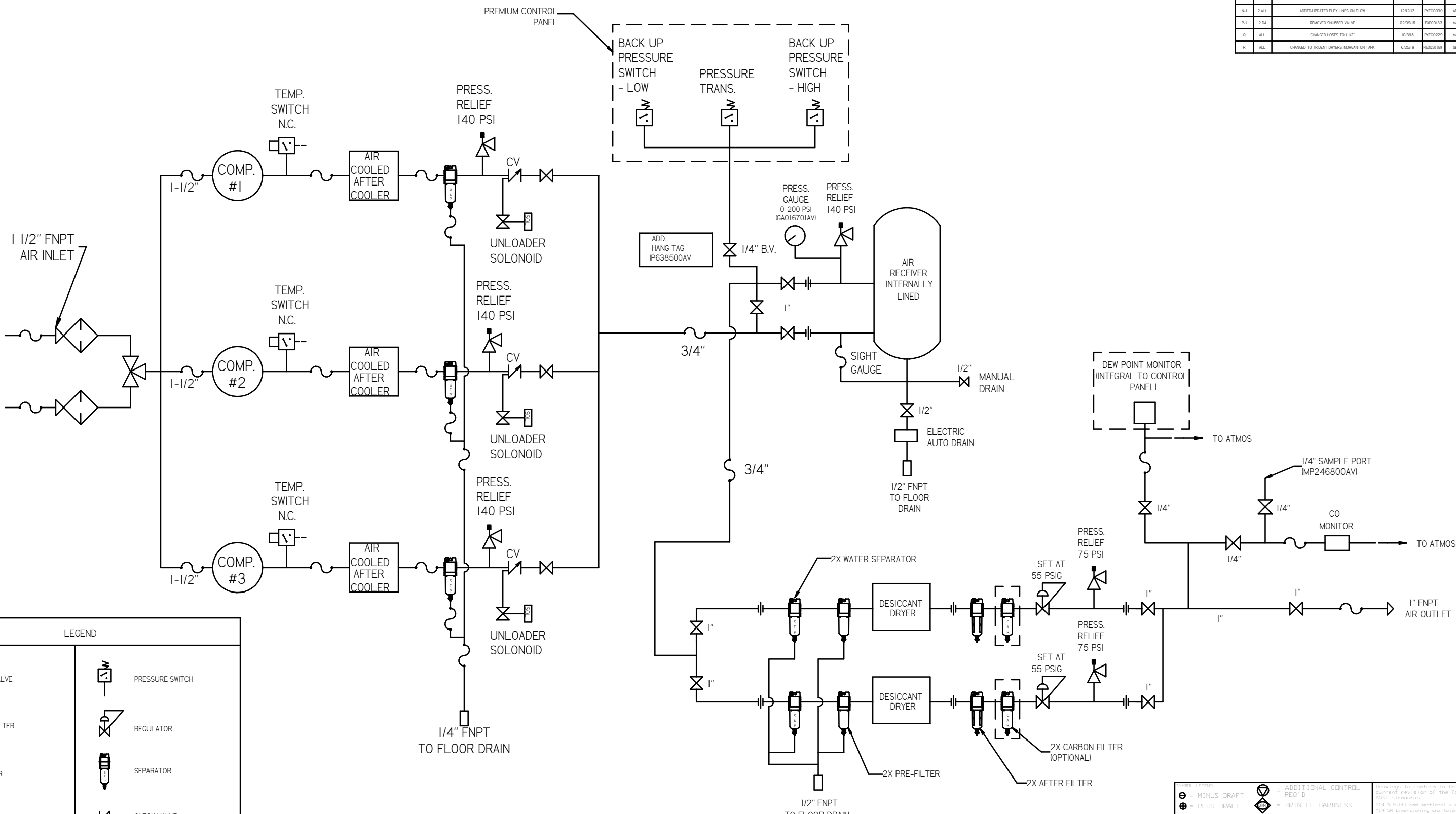
240GAL ASME RECEIVER INTERNALLY LINED. SEE 3D MODEL ID# 721012 FOR PLUMBING DETAIL.



NOTE: SYSTEM DESIGNED IN COMPLIANCE WITH U.S. NFPA '99, LATEST EDITION

MINUS DRAFT PLUS DRAFT ADDITIONAL CONTROL REQ'D BRINELL HARDNESS	AUTOCAD REL2008 LT INCH Sheet 1 of 2 SCALE 1:14	DO NOT SCALE DRAWING FOR DIMENSIONS Drawing to conform to the current revision of the following ANSI standards: 11.4-3 First and section view 11.4-9 Dimensioning and tolerancing
CONFIDENTIAL DISCLOSURE This drawing is the property of POWEREX, Inc. or its Scott Fetzer Company and subject to return on demand. Its contents are confidential and must not be copied or submitted to outside parties for use or reproduction.	DRAWN BY: AEK CHECKED BY: GES APPROVED BY: DMS DATE: 9/23/11	APPROVED BY: RJR DATE: 9/23/11
MATERIAL: N/A PART NAME: TRIPLEX OILLESS RECIP. 10HP, 240GAL. BASEMOUNT DUPLEX DESICCANT	DWG NO: MPT1008	SIZE: D

REV	ZONE	REVISION	DATE	ECN	NAME	CHKD
1	ALL	ISSUED FROM SHEETS	1/23/11		AEK	GES
M-1	2 D4	ADDED SHAMBER VALVE TO STANDARD FLOW SCHEMATIC	4/12/12	22734	AEK	GES
M-1	2 ALL	ADDED/PORTED FLEX LINES ON FLOW	12/12/13		AEK	GES
P-1	2 D4	REMOVED SHAMBER VALVE	02/09/16		MJD	AEK
D	ALL	CHANGED HOSES TO 1/12"	10/3/18		MWH	SA
R	ALL	CHANGED TO TRENCH DRYERS, MORGANTON TANK	8/25/19		REEDER	GES



LEGEND	
	RELIEF VALVE
	INTAKE FILTER
	AIR FILTER
	3 WAY VALVE
	CARBON FILTER
	BALL VALVE
	SOLENOID VALVE
	PRESSURE SWITCH
	REGULATOR
	SEPARATOR
	CHECK VALVE
	FLEX LINE
	HIGH TEMP SWITCH
	UNION

NOTES:
 1) IF LAG 2 COMPRESSOR IS ENERGIZED ALARM WILL OCCUR.
 2) PIPING TO THE INLET BY OTHERS AND TO BE PER NFPA99
 3) INSTRUMENTS DOWN STREAM OF SOURCE VALVE TO BE SUPPLIED BY OTHERS.

SYMBOL LEGEND ⊖ = MINUS DRAFT ⊕ = PLUS DRAFT 2 (SEG.) 3	= ADDITIONAL CONTROL REQ'D = BRINELL HARDNESS	Drawing to conform to the current revision of the following ANSI standards: (14.3 Multi and sectional view dgs. (14.9 Dimensioning and tolerancing)
TOLERANCES NOT SPECIFIED XX ± (X) ± (X) ±	AUTOCAD RELEASE L1 INCH	DO NOT SCALE DRAWING FOR DIMENSIONS Sheet 2 of 2 SCALE 1:14
CONFIDENTIAL DISCLOSURE This drawing is the property of POWEREX INC. or the SCOTT FETZER COMPANY and subject to return or demand. The contents are confidential and must not be copied or submitted to outside parties for use or reproduction.	DRAWN BY: AEK CHECKED BY: GES 9/23/11	APPROVED BY: DMS, RJR 9/23/11, 9/23/11, 9/23/11
MATERIAL: N/A		
PART NAME: 10HP. MED. PACKAGE FLOW SCHEMATIC	ENG NO: MPT1008	SIZE: D