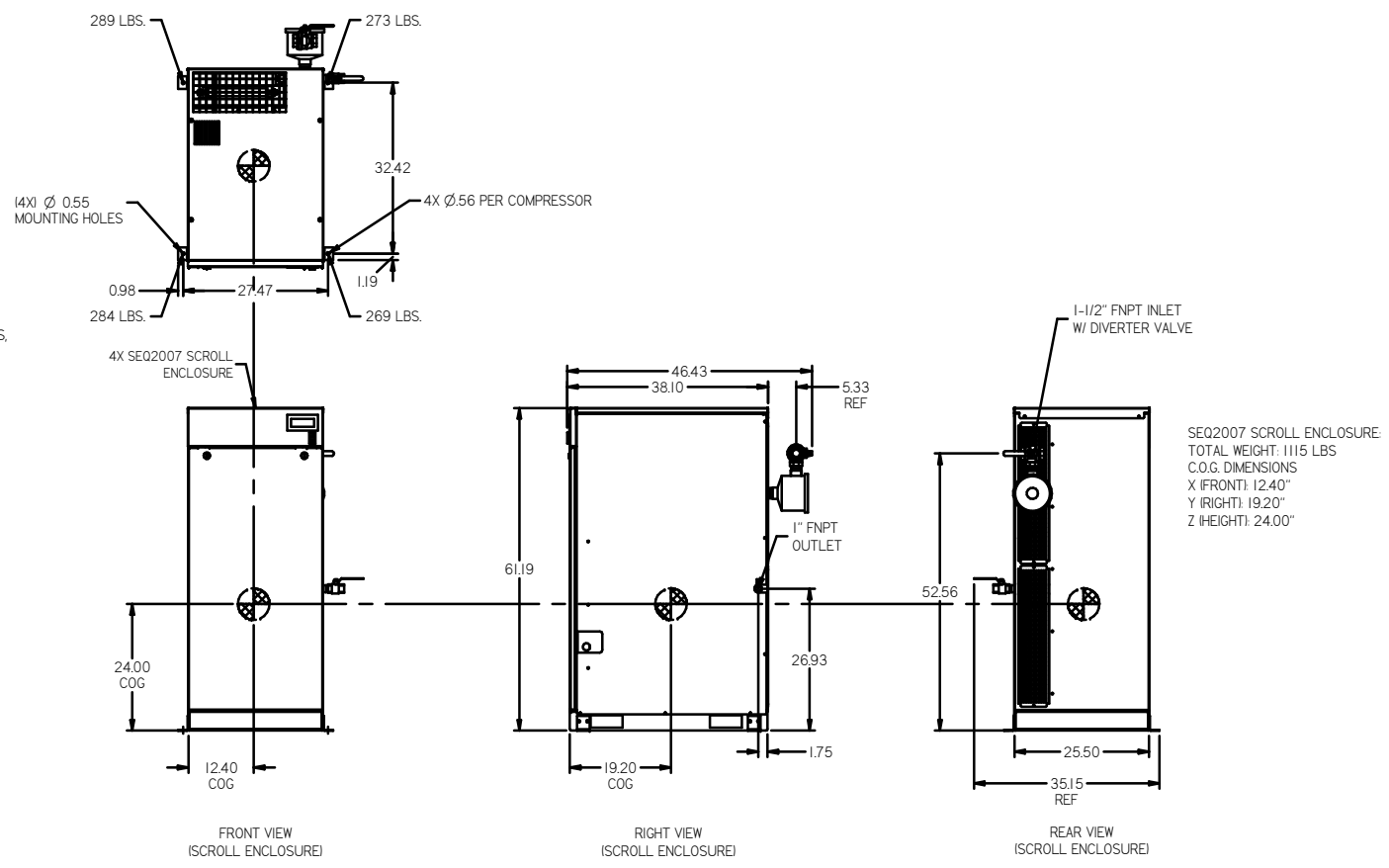
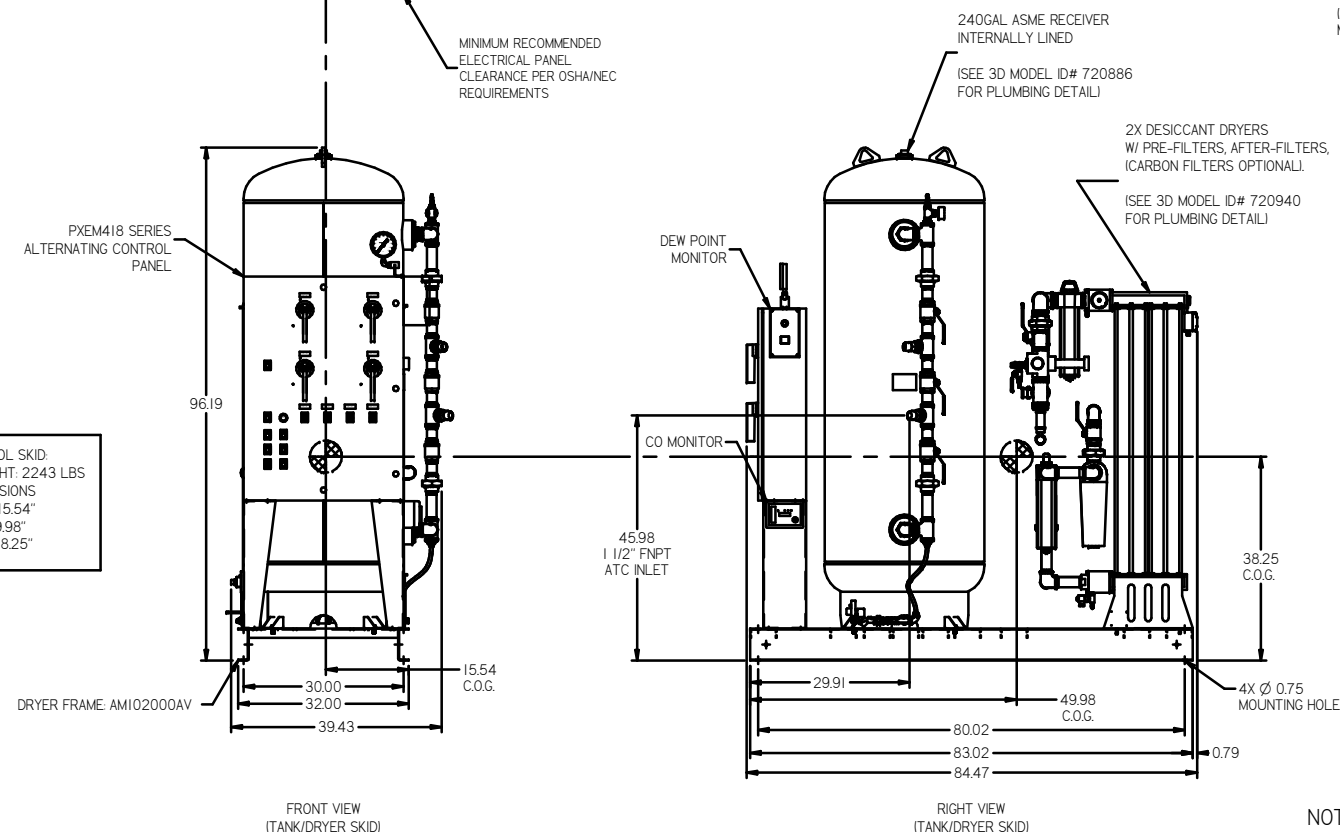
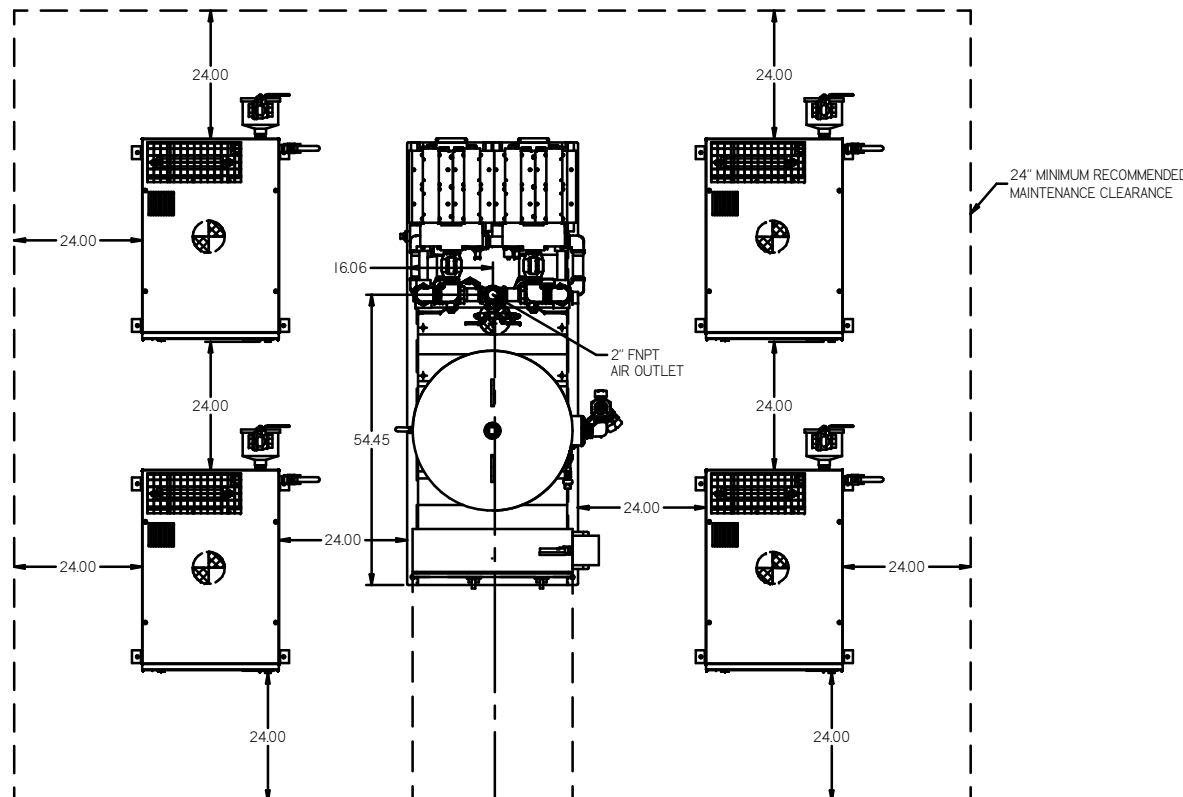


8 7 6 5 4 3 2 1

REV	ZONE	REVISION	DATE	ECN	NAME	CHKD
B-1	ALL	RELEASE TO PRODUCTION	10/11/07	015608	AEK	GES
C-1	ALL	UPDATED BUILD & FLOW TO CURRENT STANDARD	03/08	21906	AEK	GES
D-1	ALL	CORRECTED INLET PLUMBING & ORIENTATION	10/23/08	21907	AEK	GES
E-1	1 ALL	UPDATED TO NEW ENCLOSURE DESIGN	02/20/10	22394	AEK	GES
F-1	1 ALL	CHANGED ATC SKID CONFIG FOR BETTER SERVICEABILITY	02/04/10	22348	AEK	GES
F-2	1 ALL	ADDED COG INFO	12/01/10	22349	AEK	GES
G-1	1 ALL	UPDATED ATC SKID FRAME MOVED MONITORS TO CORRECT LOCATION	7/29/11	22546	AEK	GES
G-2	1 CA	ADDED FILTER CALL-OUTS TO DRYER CALL-OUT	8/19/11	22546	AEK	GES
H-1	2 ALL	UPDATED/ADDED FLEX LINES	11/01/13	PRE02200	AEK	KMD
J-1	1 ALL	UPDATED TO NANO DRYERS	8/10/17	PRE00174	AEK	GES
K	ALL	UPDATED TO PRESENT DRYERS; MORGANTON TANK, TC	5/31/19	PRE02201	GES	MW



ATC/CONTROL SKID  
TOTAL WEIGHT: 2243 LBS  
C.O.G. DIMENSIONS  
X (FRONT): 15.54"  
Y (RIGHT): 49.98"  
Z (HEIGHT): 38.25"

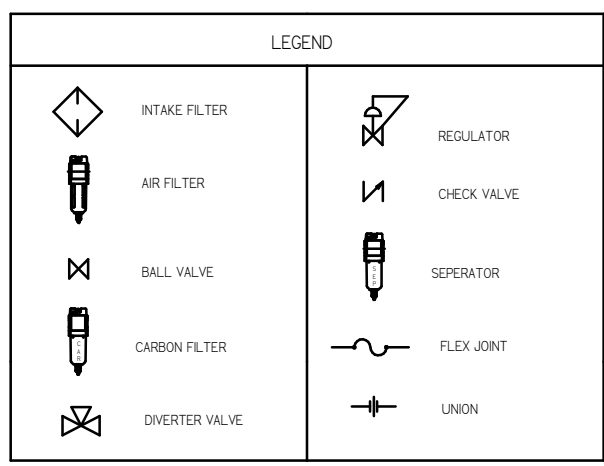
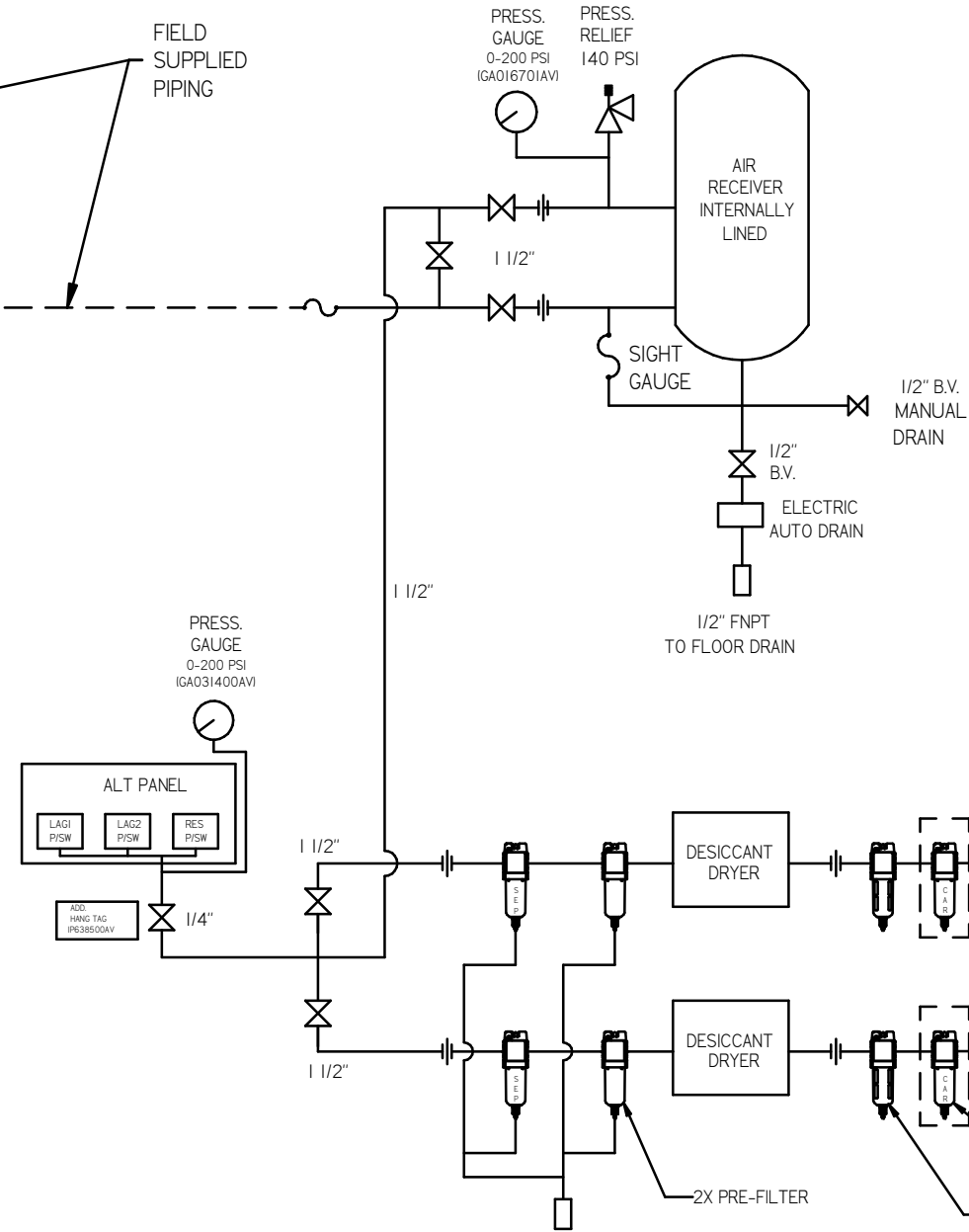
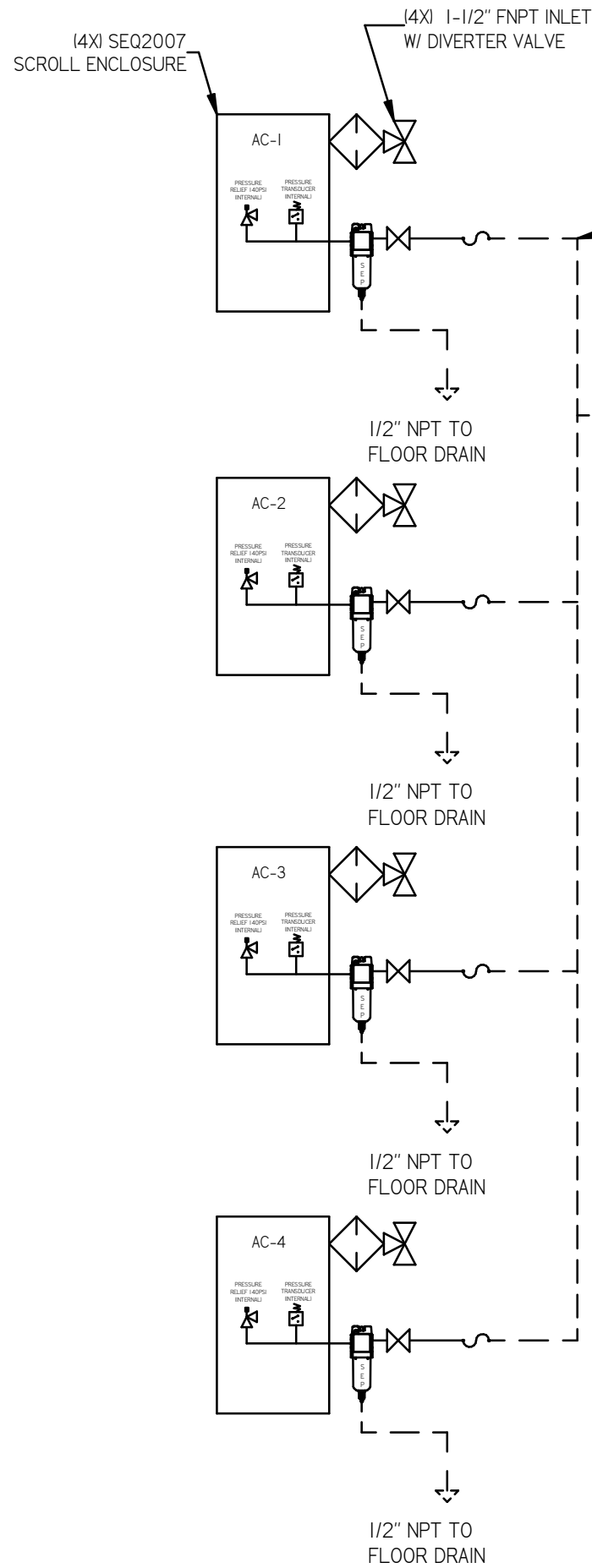
SEQ2007 SCROLL ENCLOSURE  
TOTAL WEIGHT: 1115 LBS  
C.O.G. DIMENSIONS  
X (FRONT): 12.40"  
Y (RIGHT): 19.20"  
Z (HEIGHT): 24.00"

- NOTES:  
 1.) SHEET 1, UNIT LAYOUT.  
 2.) SHEET 2, UNIT FLOW SCHEMATIC.  
 3.) INLET CONNECTIONS: 1-1/2" FNPT X 4.  
 4.) OUTLET CONNECTION: 2" FNPT X 1.  
 5.) POWER CONNECTION: 1- 208, 230, OR 460 VOLT.  
 6.) WHEN PACKAGE IS INSTALLED INTO THE FACILITY, VERIFY THE INSTALLER REFERENCES NEC TABLE 110.26 (A) (I) FOR MINIMUM WORKING AREA.

TOLERANCES NOT SPECIFIED XXX ± Z (DEG.) ±	AUTOCAD RELEASED I.T. INCH	DO NOT SCALE DRAWING FOR DIMENSIONS Sheet 1 of 2 SCALE 1:18
COMPENSATIONAL ENCLOSURE This drawing is the property of the CAMPBELL GROUP of the SCOTT FETZER COMPANY and subject to return on demand. Its contents are confidential and must not be copied or submitted to outside parties for use or reproduction.	DRAWN BY: AEK CHECKED BY: GES 10/1/07	APPROVED BY: DMS, DB 10/1/07, 10/1/07, 10/1/07
MATERIAL: N/A PART NAME: MEDICAL SCROLL 20HP QUADPLEX	DWN: N/A CHG: N/A	POWEREX THE PRODUCTIVITY EXPERTS Ph: 888-762-7979 Fax: 415-191-3673-1155 MSEQ200

DENOTES CENTER OF GRAVITY

8 7 6 5 4 3 2 1



REV	ZONE	REVISION	DATE	ECN	NAME	CHKD
B-1	ALL	RELEASE TO PRODUCTION	10/1/07	21665	AEK	GES
C-1	ALL	UPDATED BUILD & FLOW TO CURRENT STANDARD	6/3/08	21906	AEK	GES
D-1	ALL	CORRECTED INLET PLUMBING & ORIENTATION	10/23/08	21907	AEK	GES
E-1	ALL	UPDATED TO NEW ENCLOSURE DESIGN	6/22/10	22394	AEK	GES
F-1	1 ALL	CHANGED ATC SKID CONFIG FOR BETTER SERVICEABILITY	6/24/10	22348	AEK	GES
F-2	1 ALL	ADDED COG INFO	12/7/10	22348	AEK	GES
G-1	1 ALL	UPDATED ATC SKID FRAME	7/29/11	22546	AEK	GES
G-2	1 04	MOVED MONITORS TO CORRECT LOCATION	8/19/11	22546	AEK	GES
H-1	2 ALL	UPDATES/ADDED FLEX LINES	11/9/13	PXC0030	AEK	KMD
J-1	1 ALL	UPDATED TO NANO DRYERS	8/10/17	PXC0074	AEK	GES
K	ALL	UPDATED TO TRENT DRYERS, MORGANTAN TANK, TC	5/31/19	PXC0291	GES	MHH

- NOTES:  
 1.) SHEET 1, UNIT LAYOUT.  
 2.) SHEET 2, UNIT FLOW SCHEMATIC.  
 3.) INLET CONNECTIONS: 1-1/2" FNPT X 4.  
 4.) OUTLET CONNECTION: 2" FNPT X 1.  
 5.) POWER CONNECTION: 1- 208, 230, OR 460 VOLT.

MINUS DRAFT PLUS DRAFT TOLERANCES NOT SPECIFIED XX XXX Z DEG 1/4	AUTOCAD REL2008 LT INCH DO NOT SCALE DRAWING FOR DIMENSIONS Sheet 2 of 2 SCALE 1:18 CONFIDENTIAL DISCLOSURE This drawing is the property of the COMPANY GROUP of the SCOTT FETZER COMPANY and subject to return on demand. Its contents are confidential and must not be copied or submitted to outside parties for use or reproduction.	ADDITIONAL CONTROL REG'D = BRINELL HARDNESS DRAWN BY: AEK CHECKED BY: GES APPROVED BY: DMS DATE: 10/1/07, 10/1/07, 10/1/07, 10/1/07
MATERIAL: N/A PART NAME: ENCLOSED SCROLL FLOW SCHEMATIC DWG NO: MSEQ200 SIZE: D	 888-765-7375 Fax: (513) 367-3125	