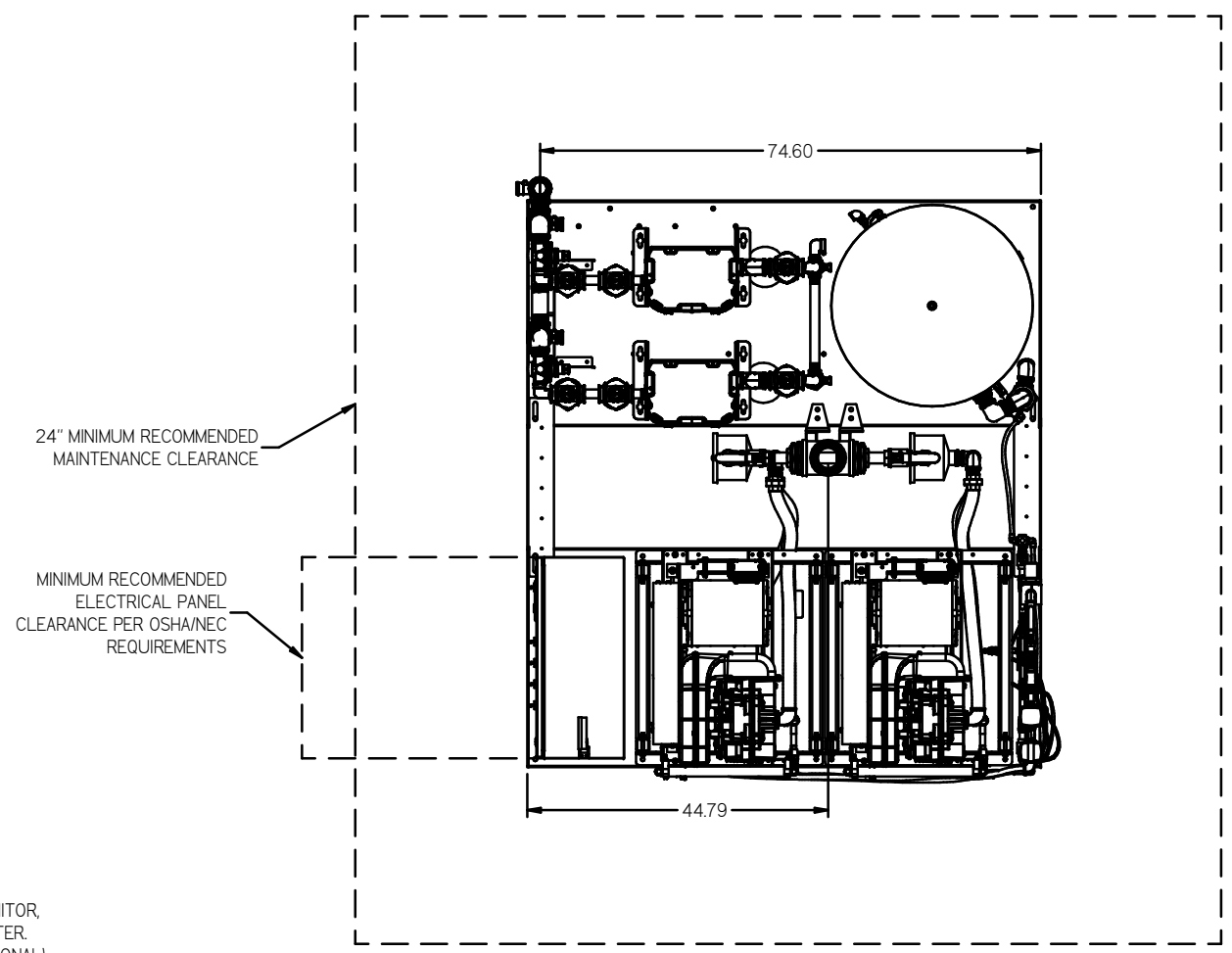
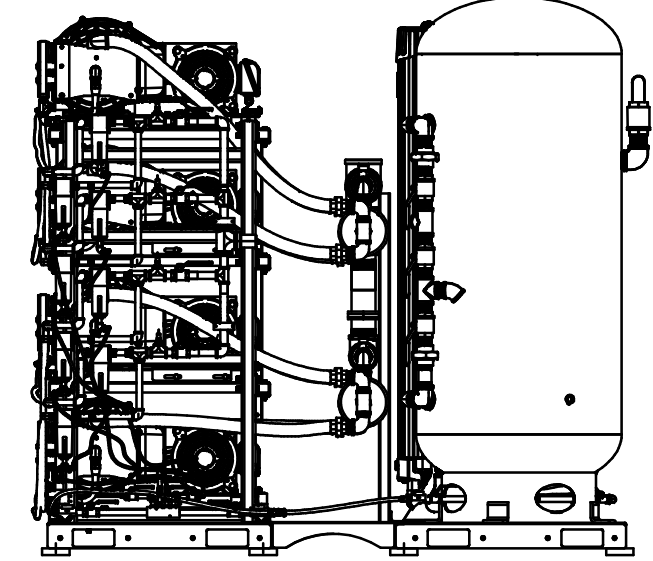
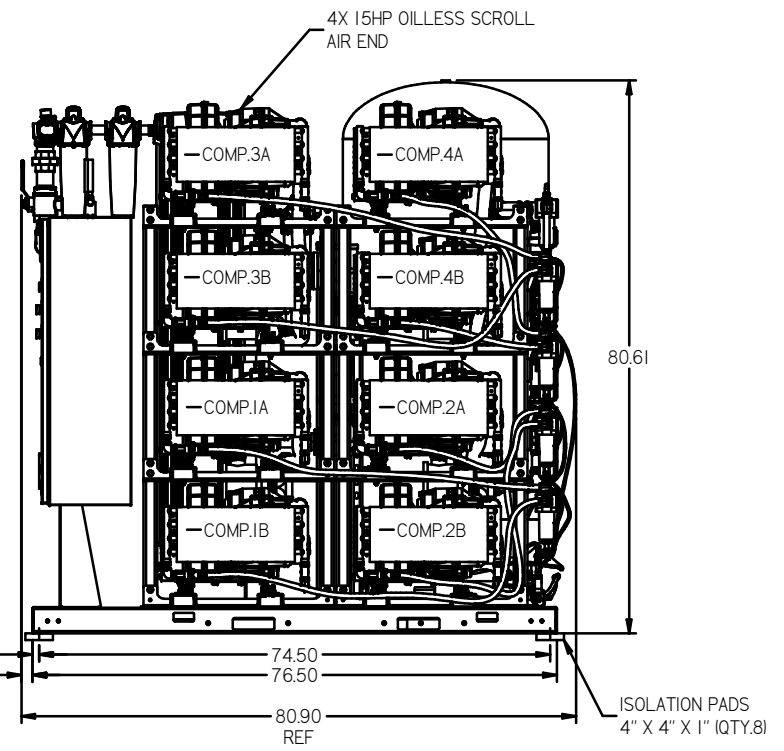
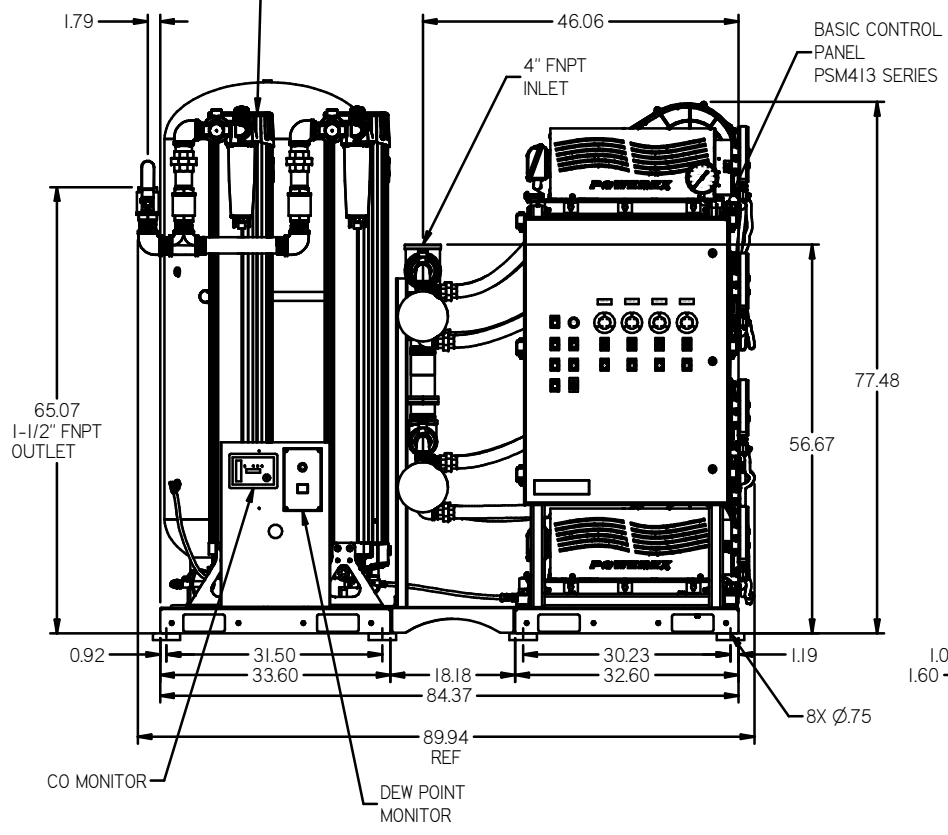


REV	ZONE	REVISION	DATE	EDN	NAME	CHKD
B-1	ALL	RELEASE TO PRODUCTION	8/23/15	PREC015	JBE	AEK
C-1	ALL	UPDATED TO CURRENT PRODUCTION STANDARDS	2/18/8	PREC037	AKA	GES
D-1	2 ALL 2 ALL 1 ALL	CORRECTED SEPARATOR DRAIN LINES TO 1/4" ADDED NOTE TO REMOVE SEPARATOR FLOAT CORRECTED VIEW POSITIONING ADDED OUTLINE FOR RECOMMENDED CLEARANCES	1/18/17	PREC017	MJD	GES
E	ALL	UPDATED TO TEAM CENTER	9/29/9	PREC073	GES	MW



2X DESICCANT DRYER
W/ DEW POINT MONITOR,
CARBON MONOXIDE MONITOR,
PRE-FILTER, AFTER-FILTER
(CARBON FILTER IS OPTIONAL)

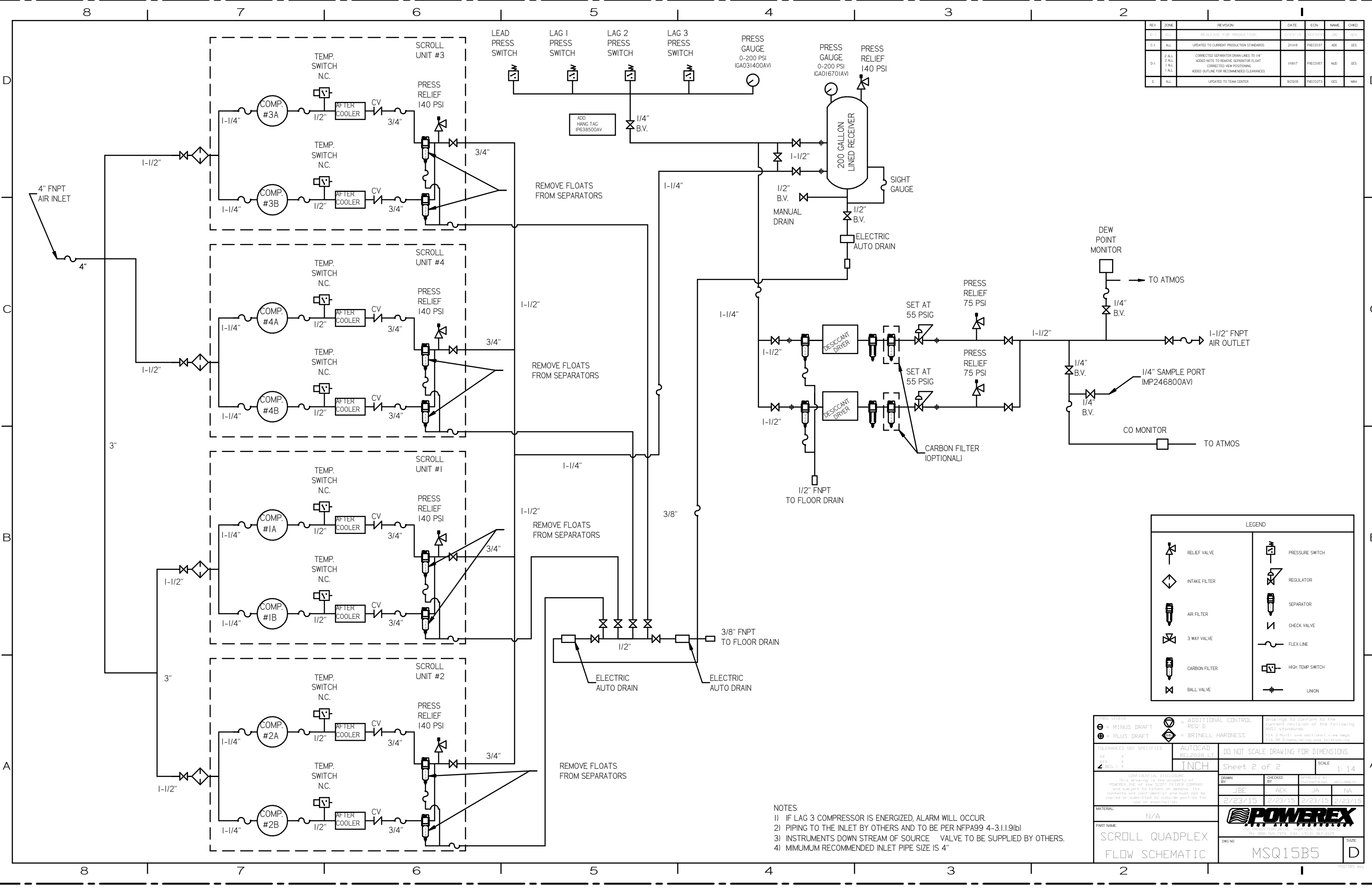
200 GALLON ASME
AIR RECEIVER
INTERNALLY LINED



NOTE: SYSTEM DESIGNED IN
COMPLIANCE WITH US NFPA99,
LATEST EDITION.

PREL. DESIGN ⊖ = MINUS DRAFT ⊕ = PLUS DRAFT	⊕ = ADDITIONAL CONTROL REQ'D ⊖ = BRINELL HARDNESS	Drawings to conform to the current revision of the following ANSI standards: Y14.3 Multi and sectional view drawg. Y14.98 Dimensioning and tolerancing
TOLERANCES NOT SPECIFIED XX ± XXX ± Z DEC. 3	AUTOCAD REL2008 LT INCH	DO NOT SCALE DRAWING FOR DIMENSIONS Sheet 1 of 2 SCALE 1:14
CONFIDENTIAL DISCLOSURE This drawing is the property of POWEREX, Inc. or THE SCOTT FELZER COMPANY and subject to return on demand. Its contents are confidential and must not be copied or submitted to outside parties for use or application.		DRAWN BY: JBE CHECKED BY: AEK APPROVED BY: JA DATE: 2/23/15 DATE: 2/23/15 DATE: 2/23/15
MATERIAL: N/A PART NAME: 15HP 200 GAL MED BASIC QUAD SCROLL		MSQ15B5 SIZE: D

REV	ZONE	REVISION	DATE	ECN	NAME	CHKD
B-1	ALL	RELEASE FOR PRODUCTION	2/23/15	PREC037	JBE	AEK
C-1	ALL	UPDATED TO CURRENT PRODUCTION STANDARDS	2/18/16	PREC037	AEK	GES
D-1	2 ALL	CORRECTED SEPARATOR DRAIN LINES TO 1/4"	1/8/17	PREC067	MJD	GES
D-1	1 ALL	CORRECTED VIEW POSITIONING				
D-1	1 ALL	ADDED OUTLINE FOR RECOMMENDED CLEARANCES				
E	ALL	UPDATED TO TEAM CENTER	9/29/19	PREC0279	GES	MH

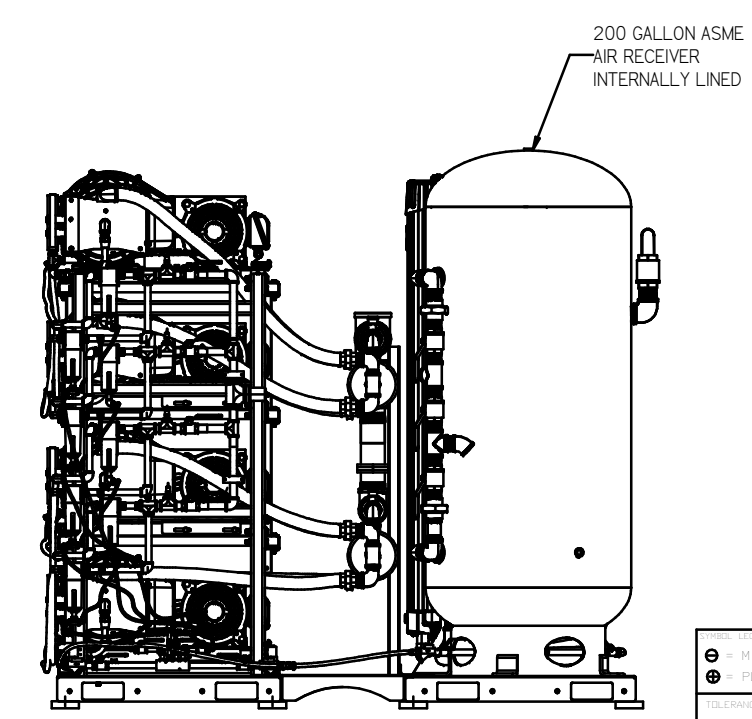
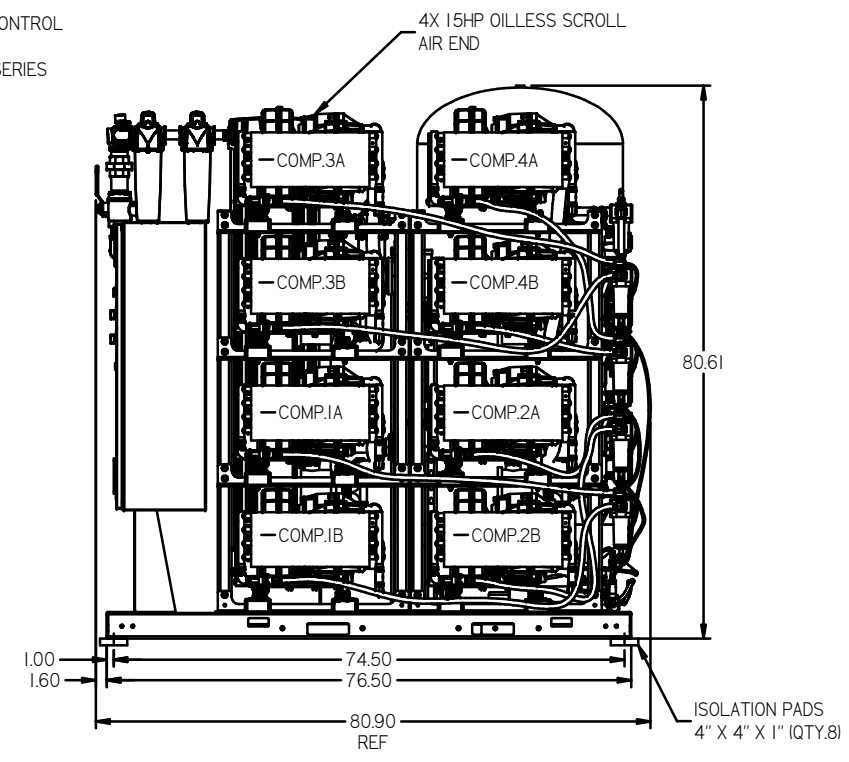
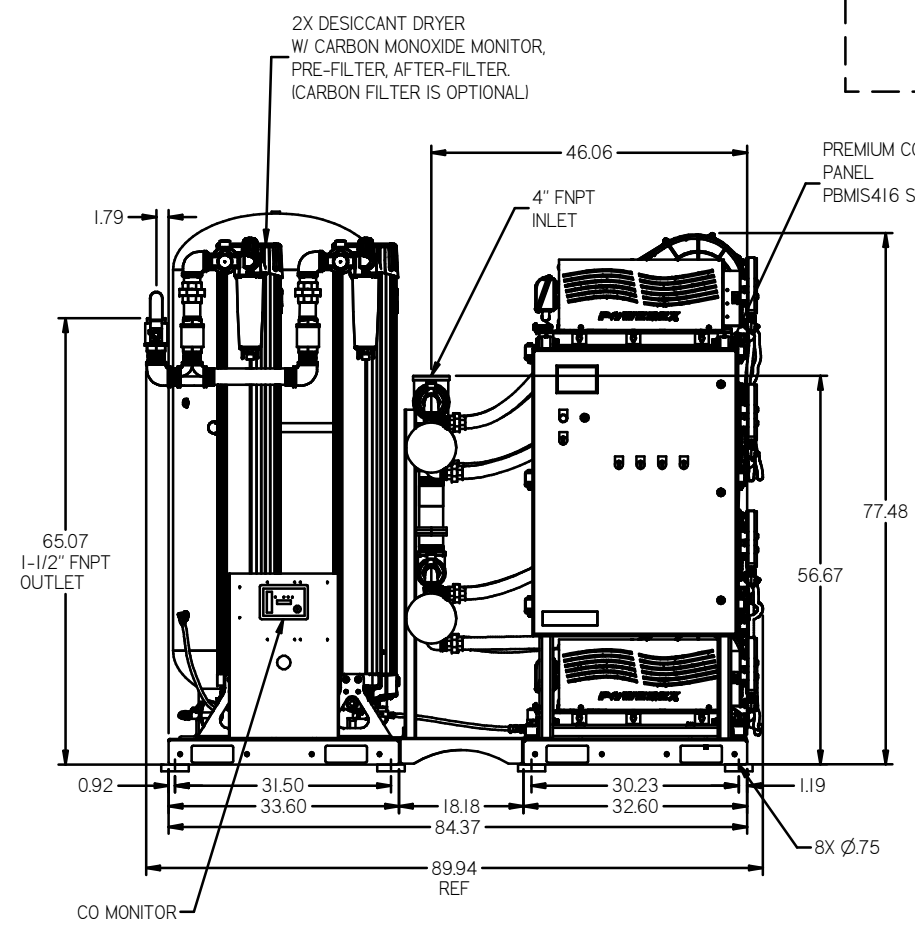
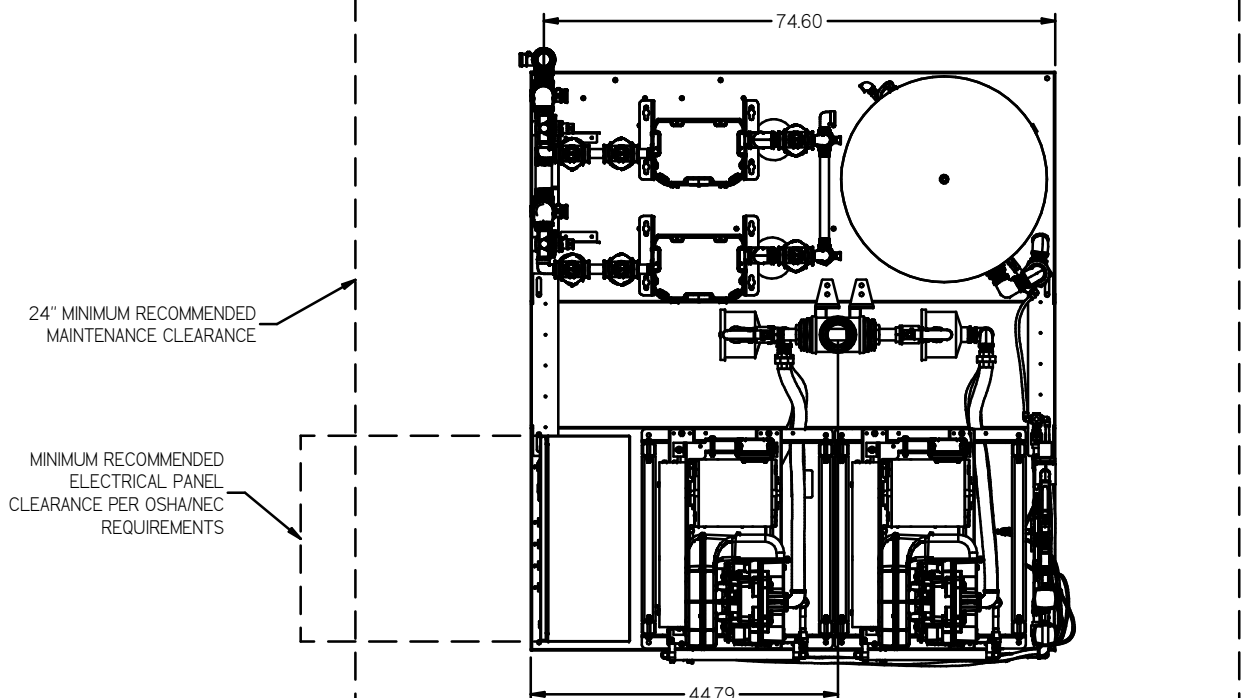


	RELIEF VALVE		PRESSURE SWITCH
	INTAKE FILTER		REGULATOR
	AIR FILTER		SEPARATOR
	3 WAY VALVE		CHECK VALVE
	CARBON FILTER		FLEX LINE
	BALL VALVE		HIGH TEMP SWITCH
			UNION

MINUS DRAFT PLUS DRAFT TOLERANCES NOT SPECIFIED AUTOCAD INCH DO NOT SCALE DRAWING FOR DIMENSIONS Sheet 2 of 2 SCALE 1:14 CONFIDENTIAL DISCLOSURE This drawing is the property of POWEREX, INC. of the SCOTT FELTZER COMPANY and subject to return on demand. Its contents are confidential and must not be copied or submitted to outside parties for use in manufacturing.	ADDITIONAL CONTROL BRINELL HARDNESS DATE: 2/23/15 DRAWN BY: JBE CHECKED BY: AEK APPROVED BY: JA DATE: 2/23/15 DATE: 2/23/15 DATE: 2/23/15 DATE: 2/23/15	POWEREX 880-769-7979 FAX: (513) 367-3125 MSQ15B5
---	--	--

- NOTES:
- 1) IF LAG 3 COMPRESSOR IS ENERGIZED, ALARM WILL OCCUR.
 - 2) PIPING TO THE INLET BY OTHERS AND TO BE PER NFPA99 4-3.1.1.9(b)
 - 3) INSTRUMENTS DOWN STREAM OF SOURCE VALVE TO BE SUPPLIED BY OTHERS.
 - 4) MINIMUM RECOMMENDED INLET PIPE SIZE IS 4"

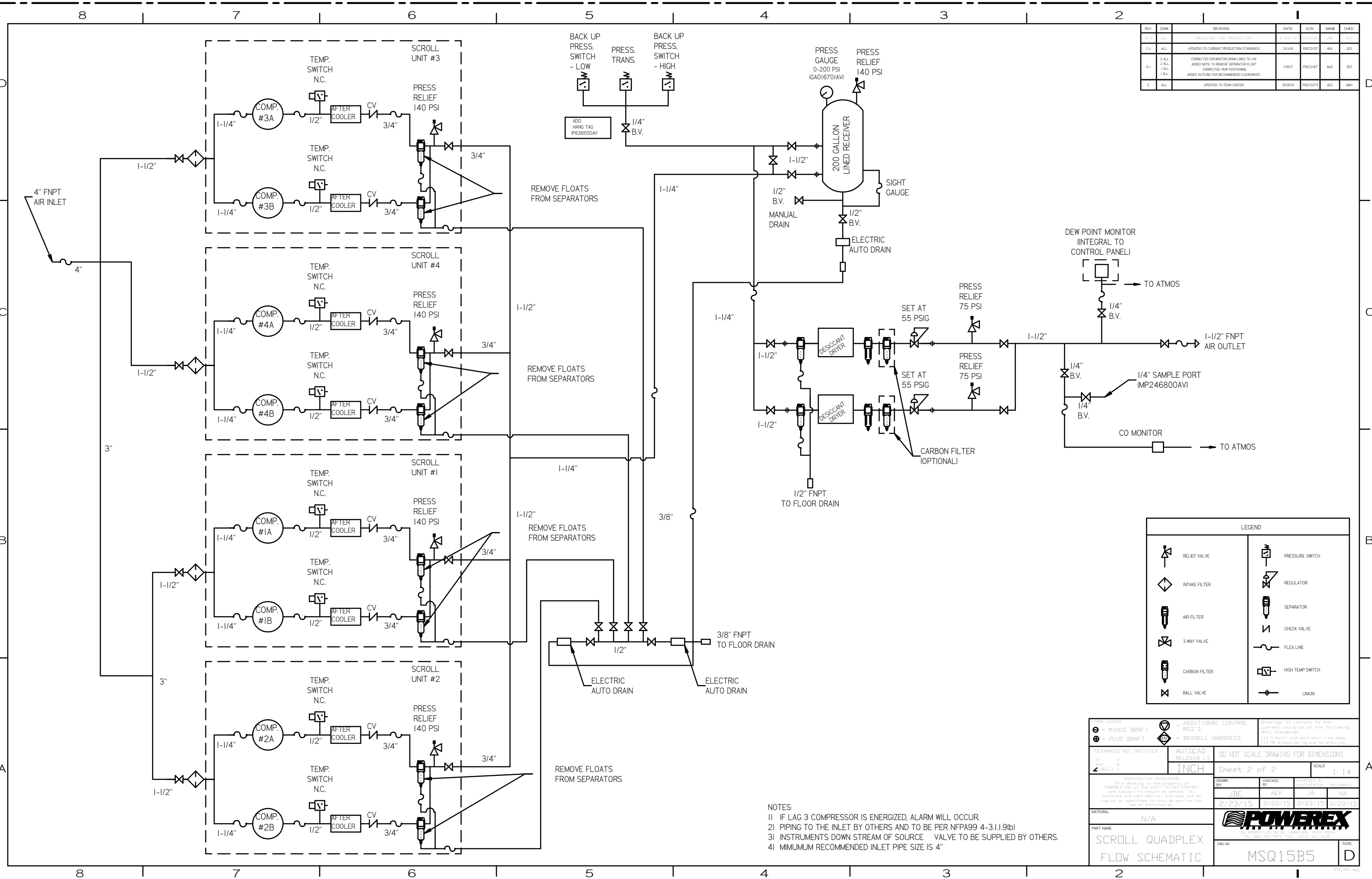
REV	ZONE	REVISION	DATE	ECN	NAME	CHKD
B-1	ALL	RELEASED TO PRODUCTION	2/23/15	PIEC0037	JBE	RES
C-1	ALL	UPDATED TO CURRENT PRODUCTION STANDARDS	2/11/16	PIEC0037	AEK	GES
D-1	3 ALL 2 ALL 1 ALL	CORRECTED SEPARATOR DRAIN LINES TO USE ADDED NOTE TO REMOVE SEPARATOR FLOAT CORRECTED VIEW POSITIONING ADDED OUTLINE FOR RECOMMENDED CLEARANCES	1/18/17	PIEC0167	MJD	GES
E	ALL	UPDATED TO TEAM CENTER	9/25/19	PIEC0273	GES	MHJ



NOTE: SYSTEM DESIGNED IN COMPLIANCE WITH US NFPA'99, LATEST EDITION.

SYMBOL LEGEND ⊖ = MINUS DRAFT ⊕ = PLUS DRAFT ⊕ = ADDITIONAL CONTROL REQ'D ⊕ = BRINELL HARDNESS		Drawings to conform to the current revision of the following ANSI standards: 1:4 2 Multi and sectional view degs 1:4-20 Dimensions and tolerances	
TOLERANCES NOT SPECIFIED .XX ± .XX .X ± .X .X ± .X		AUTOCAD RELEASED LT INCH DO NOT SCALE DRAWING FOR DIMENSIONS Sheet 1 of 2 SCALE 1:14	
CONFIDENTIAL DISCLOSURE This drawing is the property of POWEREX, INC. of the SCOTT FETZER COMPANY and subject to return on demand. Its contents are confidential and must not be copied or submitted to outside parties for use or examination.		DRAWN BY: JBE CHECKED BY: AEK APPROVED BY: JA DATE: 2/23/15 DATE: 2/23/15 DATE: 2/23/15 DATE: 2/23/15	
MATERIAL: N/A			
PART NAME: 15HP 200 GAL MED PXMI QUAD SCROLL		DRGNO: MSQ15B5 SIZE: D	

REV	ZONE	REVISION	DATE	ECN	NAME	CHKD
B-1	ALL	RELEASE FOR PRODUCTION	2/23/15	PREC075	JE	AEK
C-1	ALL	UPDATED TO CURRENT PRODUCTION STANDARDS	2/18/16	PREC057	AEK	GES
D-1	2 ALL 1 ALL	CORRECTED SEPARATOR DRAIN LINES TO 1/4" ADDED NOTE TO REMOVE SEPARATOR FLOAT CORRECTED VIEW POSITIONING ADDED OUTLINE FOR RECOMMENDED CLEARANCES	1/18/17	PREC067	MJD	GES
E	ALL	UPDATED TO TEAM CENTER	9/29/19	PREC073	GES	MW



	RELIEF VALVE		PRESSURE SWITCH
	INTAKE FILTER		REGULATOR
	AIR FILTER		SEPARATOR
	3 WAY VALVE		CHECK VALVE
	CARBON FILTER		FLEX LINE
	BALL VALVE		HIGH TEMP SWITCH
			UNION

- NOTES:
- IF LAG 3 COMPRESSOR IS ENERGIZED, ALARM WILL OCCUR.
 - PIPING TO THE INLET BY OTHERS AND TO BE PER NFPA99 4-3.1.1.9(b)
 - INSTRUMENTS DOWN STREAM OF SOURCE VALVE TO BE SUPPLIED BY OTHERS.
 - MINIMUM RECOMMENDED INLET PIPE SIZE IS 4"

PREL. ISSUE - MINUS DRAFT + PLUS DRAFT	ADDITIONAL CONTROL REQ'D AUTOCAD REL 2008 LT INCH	DO NOT SCALE DRAWING FOR DIMENSIONS Sheet 2 of 2 SCALE 1:14
RELEASED: NOT SPECIFIED XXX (REV.)	CONFIDENTIAL DISCLOSURE This drawing is the property of POWEREX, Inc. of the SCOTT PEXCO COMPANY and subject to return on demand. Its contents are confidential and must not be copied or submitted to outside parties for sale or examination.	DRAWN BY: JRF CHECKED BY: AEK, JA, NA 2/23/15 2/23/15 2/23/15 2/23/15
MATERIAL: N/A PART NAME: SCROLL QUADPLEX FLOW SCHEMATIC DWG NO: MSQ15B5	 15000 Highway 101, Suite 1000, San Diego, CA 92128 Ph: 858-769-7979 Fax: 619-513-3673	SIZE: D