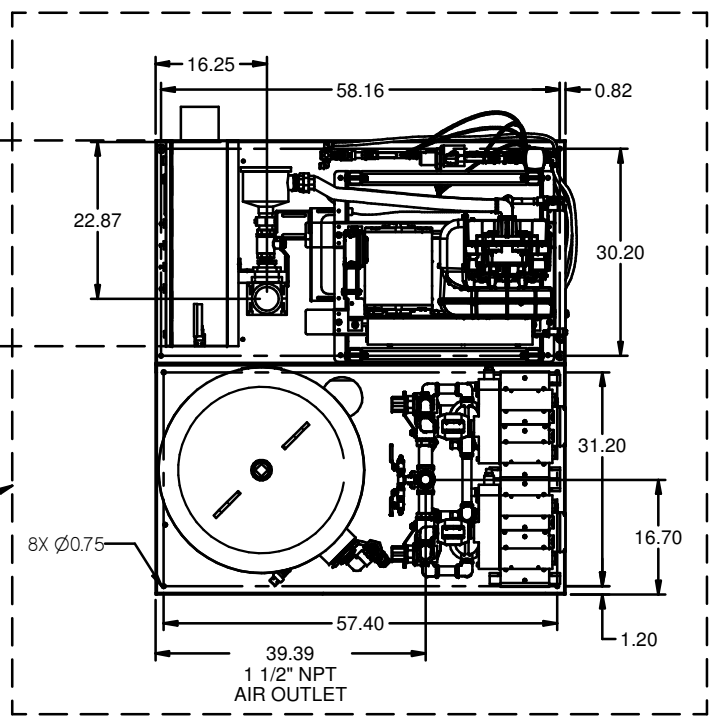


REV	ZONE	REVISION	DATE	ECN	NAME	CHKD
A	ALL	RELEASE TO PRODUCTION	2/23/18	1001	MAH	GES
C	ALL	CHANGED TO TRENT DRIVERS, MORGANTON TANK	6/17/19	1002	GES	MAH

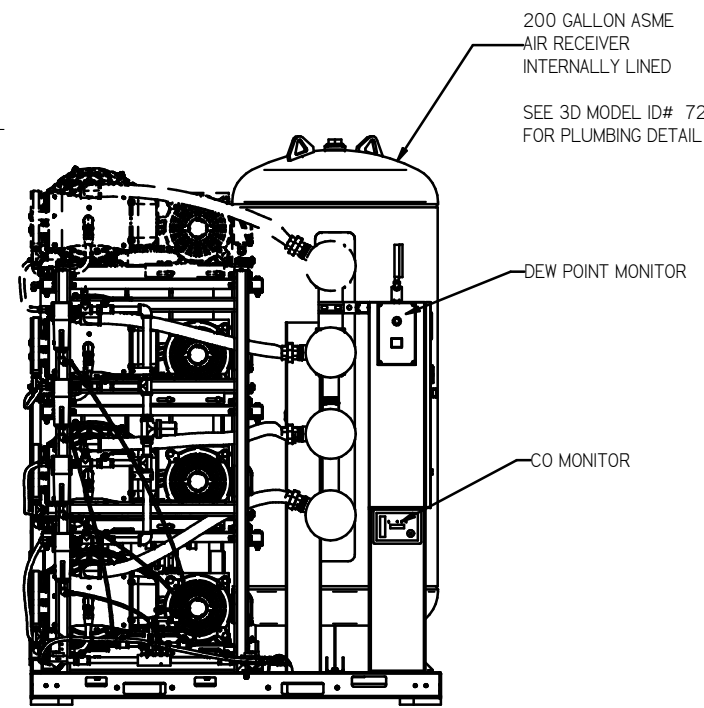
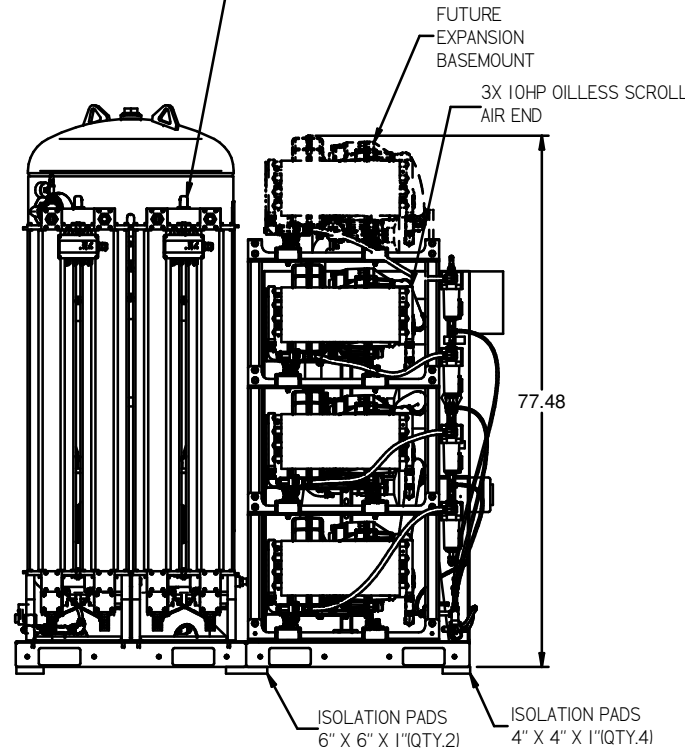
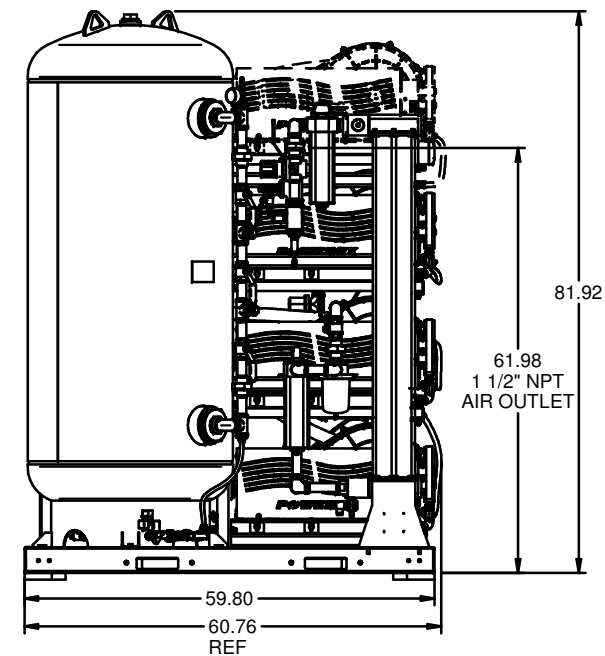
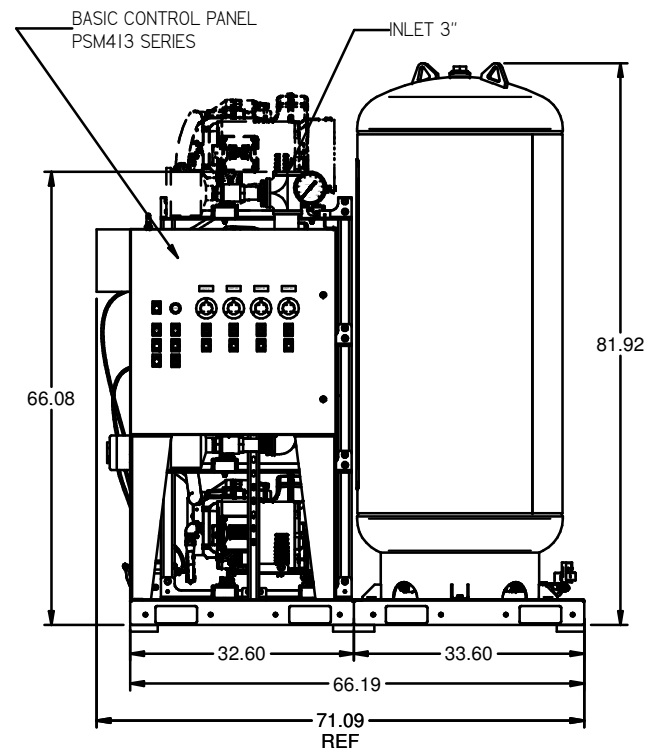
MINIMUM RECOMMENDED ELECTRICAL PANEL CLEARANCE PER OSHA/NEC REQUIREMENTS

24" MINIMUM RECOMMENDED MAINTENANCE CLEARANCE



2X DESICCANT DRYERS W/ PRE FILTERS & AFTER FILTERS. CARBON FILTERS ARE OPTIONAL. SEE 3D MODEL ID# 721048 FOR PLUMBING DETAIL

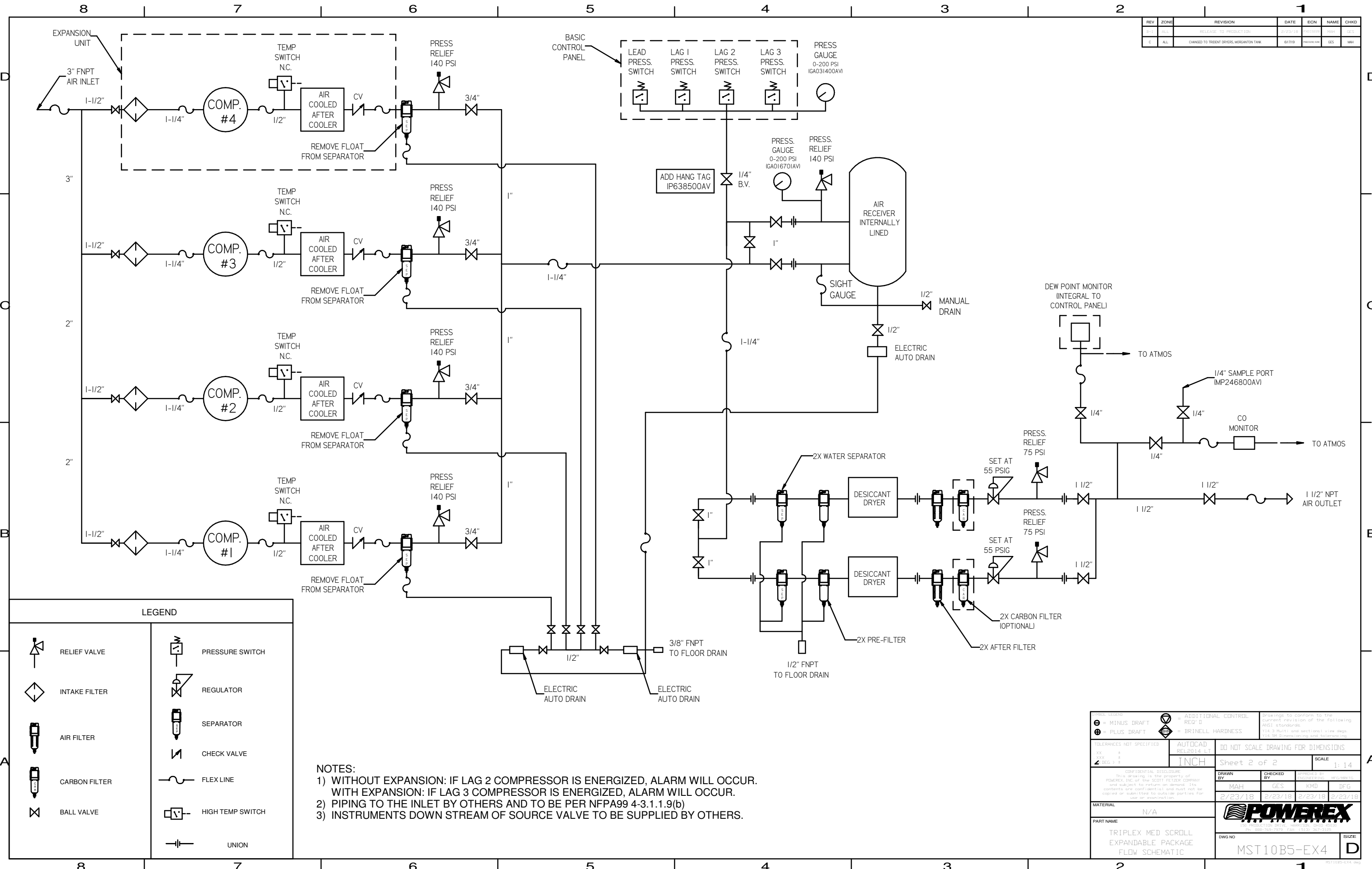
200 GALLON ASME AIR RECEIVER INTERNALLY LINED. SEE 3D MODEL ID# 721057 FOR PLUMBING DETAIL



NOTE: SYSTEM DESIGNED IN COMPLIANCE WITH US NFPA'99, LATEST EDITION.

SYMBOL LEGEND		TOLERANCES NOT SPECIFIED		DO NOT SCALE DRAWING FOR DIMENSIONS	
⊖	MINUS DRAFT	AUTOCAD	REL2014 LT	Sheet 1 of 2	
⊕	PLUS DRAFT	INCH	SCALE	1:14	
⊖	ADDITIONAL CONTROL REQ'D	DRAWN BY: MAH			
⊕	BRINELL HARDNESS	CHECKED BY: GES			
DRAWINGS TO CONFORM TO THE FOLLOWING ANSI STANDARDS: 114.3 Multi and sectional view dsgs. 14.9 Dimensioning and tolerancing		APPROVED BY: KMD, DFG			
DATE: 2/23/18		DATE: 2/23/18		DATE: 2/23/18	
MATERIAL: N/A					
PART NAME: TRIPLEX MED SCROLL EXPANDABLE 10HP 200GAL BASEMOUNT DUPLEX DESICCANT		DWG NO: MST10B5-EX4		SIZE: D	

REV	ZONE	REVISION	DATE	ECN	NAME	CHKD
B-1	ALL	RELEASE TO PRODUCT ID#1	2/23/18		MAH	GES
C	ALL	CHANGED TO TREAT DRYER, MORGANTON TANK	6/7/19		MAH	MW



**LEGEND**

	RELIEF VALVE		PRESSURE SWITCH
	INTAKE FILTER		REGULATOR
	AIR FILTER		SEPARATOR
	CARBON FILTER		CHECK VALVE
	BALL VALVE		FLEX LINE
			HIGH TEMP SWITCH
			UNION

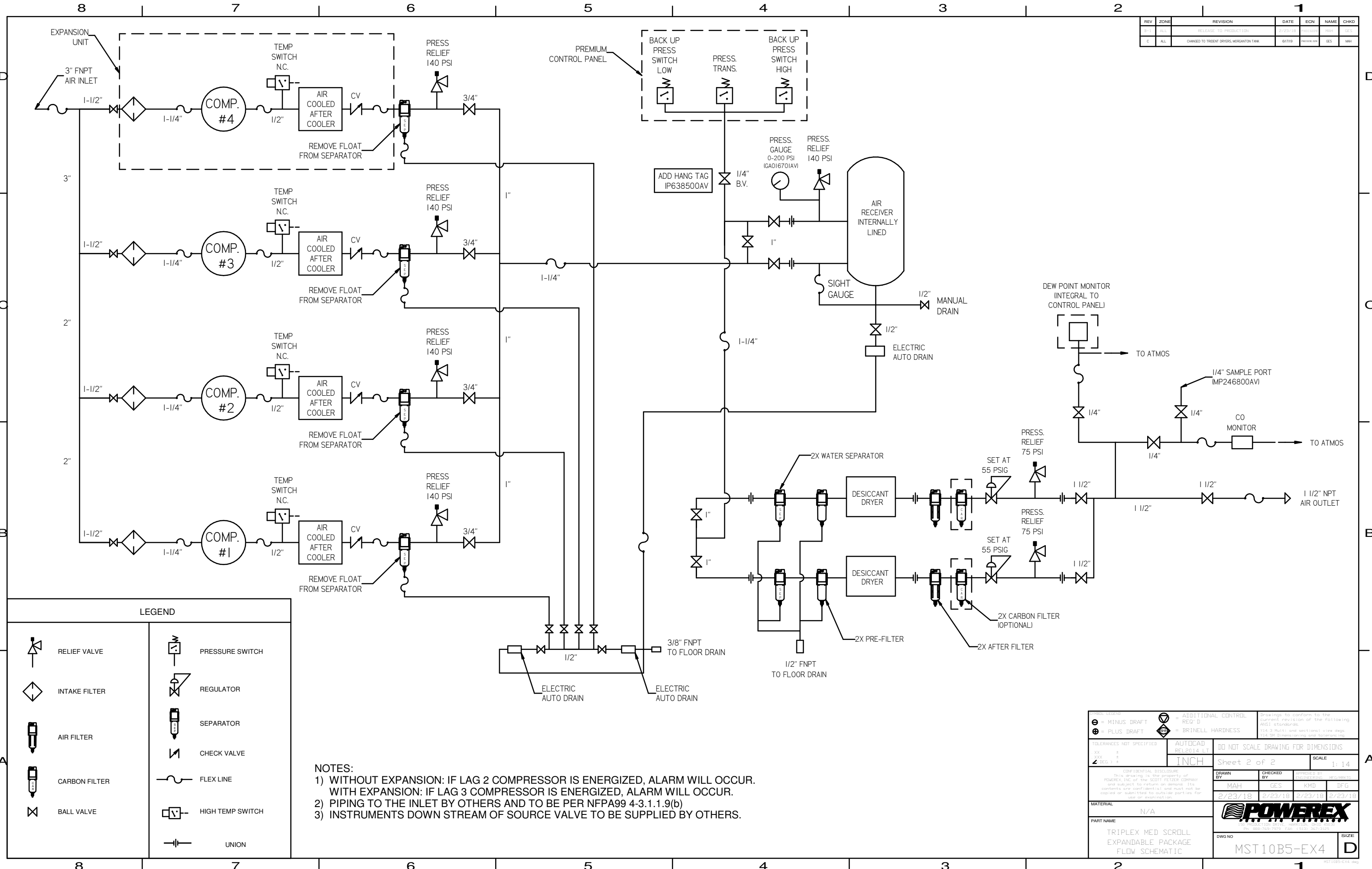
**NOTES:**

- 1) WITHOUT EXPANSION: IF LAG 2 COMPRESSOR IS ENERGIZED, ALARM WILL OCCUR. WITH EXPANSION: IF LAG 3 COMPRESSOR IS ENERGIZED, ALARM WILL OCCUR.
- 2) PIPING TO THE INLET BY OTHERS AND TO BE PER NFPA99 4-3.1.1.9(b)
- 3) INSTRUMENTS DOWN STREAM OF SOURCE VALVE TO BE SUPPLIED BY OTHERS.

TOLERANCES NOT SPECIFIED XX ± XXX ± XXX ±	AUTOCAD REL2014 LT INCH	DO NOT SCALE DRAWING FOR DIMENSIONS Sheet 2 of 2 SCALE 1:14
CONFIDENTIAL DISCLOSURE This drawing is the property of POWEREX, INC. of the SCOTT FETZER COMPANY and subject to return on demand. Its contents are confidential and must not be copied or submitted to outside parties for use or reproduction.		DRAWN BY MAH CHECKED BY GES APPROVED BY KMD DATE 2/23/18
MATERIAL N/A PART NAME TRIPLEX MED SCROLL EXPANDABLE PACKAGE FLOW SCHEMATIC		 DWG NO MST10B5-EX4 SIZE D



REV	ZONE	REVISION	DATE	ECN	NAME	CHKD
0-1	ALL	RELEASE TO PRODUCTION	2/23/18	100000	MAH	GES
C	ALL	CHANGED TO TRENT OTHERS MORGANTON TANK	6/7/18	100000	GES	MAH



LEGEND	
	RELIEF VALVE
	INTAKE FILTER
	AIR FILTER
	CARBON FILTER
	BALL VALVE
	PRESSURE SWITCH
	REGULATOR
	SEPARATOR
	CHECK VALVE
	FLEX LINE
	HIGH TEMP SWITCH
	UNION

- NOTES:
- 1) WITHOUT EXPANSION: IF LAG 2 COMPRESSOR IS ENERGIZED, ALARM WILL OCCUR. WITH EXPANSION: IF LAG 3 COMPRESSOR IS ENERGIZED, ALARM WILL OCCUR.
  - 2) PIPING TO THE INLET BY OTHERS AND TO BE PER NFPA99 4-3.1.1.9(b)
  - 3) INSTRUMENTS DOWN STREAM OF SOURCE VALVE TO BE SUPPLIED BY OTHERS.

TOLERANCES NOT SPECIFIED XX ± .005 YY ± .010 ZZ ± .015		AUTOCAD REL2014.LT	DO NOT SCALE DRAWING FOR DIMENSIONS Sheet 2 of 2 SCALE 1:14
CONFIDENTIAL DISCLOSURE This drawing is the property of POWEREX, INC. of the SCOTT FITZGER COMPANY and subject to return on demand. Its contents are confidential and must not be copied or submitted to outside parties for use or reproduction.		DRAWN BY MAH	CHECKED BY GES
MATERIAL N/A			
PART NAME TRIPLEX MED SCROLL EXPANDABLE PACKAGE FLOW SCHEMATIC		DWG NO MST10B5-EX4	SIZE D